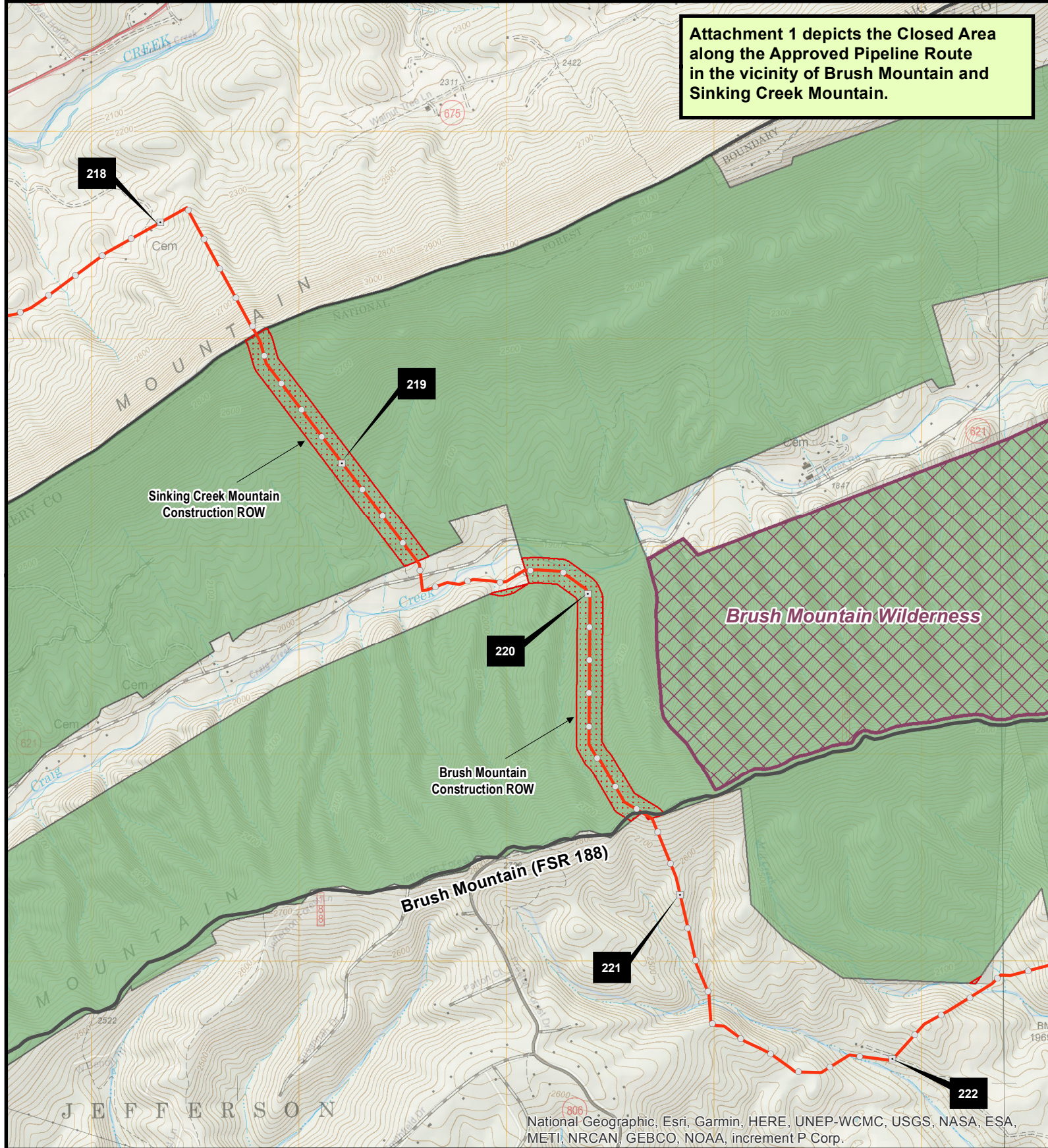


Attachment 1 depicts the Closed Area along the Approved Pipeline Route in the vicinity of Brush Mountain and Sinking Creek Mountain.



National Geographic, Esri, Garmin, HERE, UNEP-WCMC, USGS, NASA, ESA, METI, NRCAN, GEBCO, NOAA, increment P Corp.

Vicinity Map



Sources: Esri, HERE, Garmin, USGS, Intermap.

References

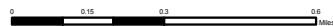
Background data is ESRI NatGeo_World_Map data, supplemented with Mountain Valley Pipeline project data and Forest Service Lands Status Records System ownership and boundary data.

Disclaimer

The USDA Forest Service makes no warranty, expressed or implied regarding the data displayed on this map, and reserves the right to correct, update, modify, or replace this information without notification. The USDA Forest Service makes no warranty to the accuracy of the approved pipeline route on non National Forest System lands. Any buffers shown on this map are for the purpose of depicting the area subject to the closure order and do not reflect the approved area of disturbance for the project.

Legend

- Pipeline Milepost
- Pipeline Tenth-mile
- Approved Pipeline Route
- Closed Area
- Administrative Forest Boundary
- National Wilderness Area
- National Forest System Lands



Map Created: September 19, 2023

**Attachment 1:
Mountain Valley Pipeline
Closure Order
08-08-11-18-165**



U.S. Forest Service
Southern Region
George Washington & Jefferson
National Forest



Copies of this map are available for public inspection in the Office of the Regional Forester, Southern Region, Atlanta, GA.