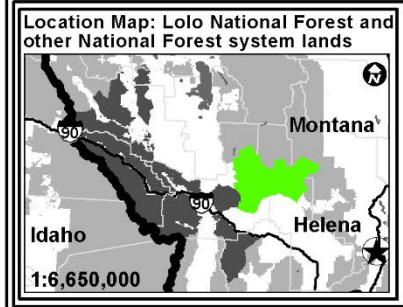
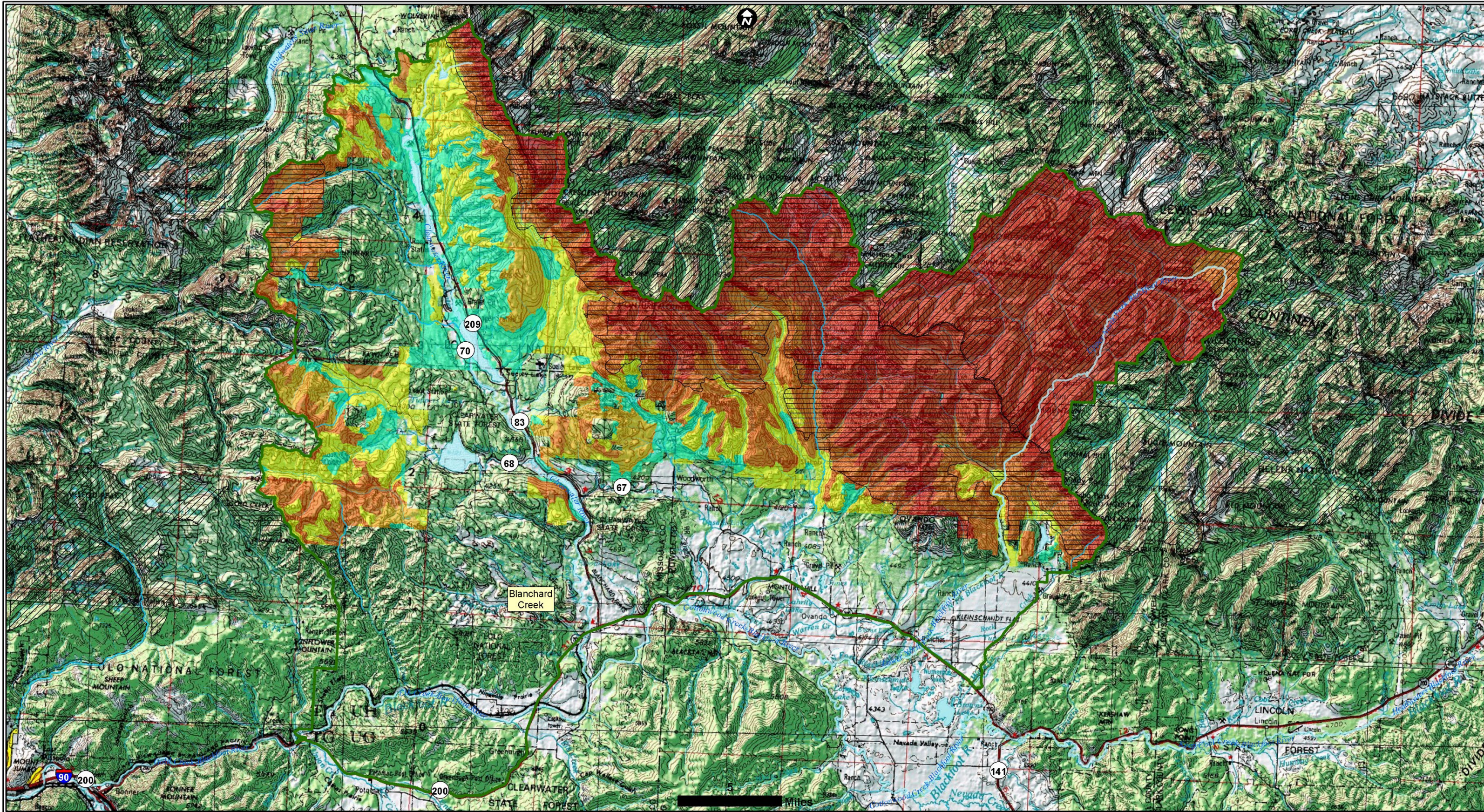


**Lolo National Forest Land Management Plan Revision-September Workshop (2023)
Upper Blackfoot Clearwater Geographic Area**

- Geographic Area Boundary**
- Geographic Area Boundary
- May be Suitable for Timber Production**
- Unsuitable
 - Suitable

- Base map features**
- Inventoried Roadless Area
 - Wilderness Area
 - 1986 Proposed Wilderness

- Wildland Urban Interface
- Major River
- Pond/Lake

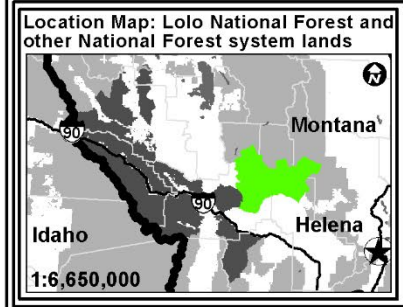
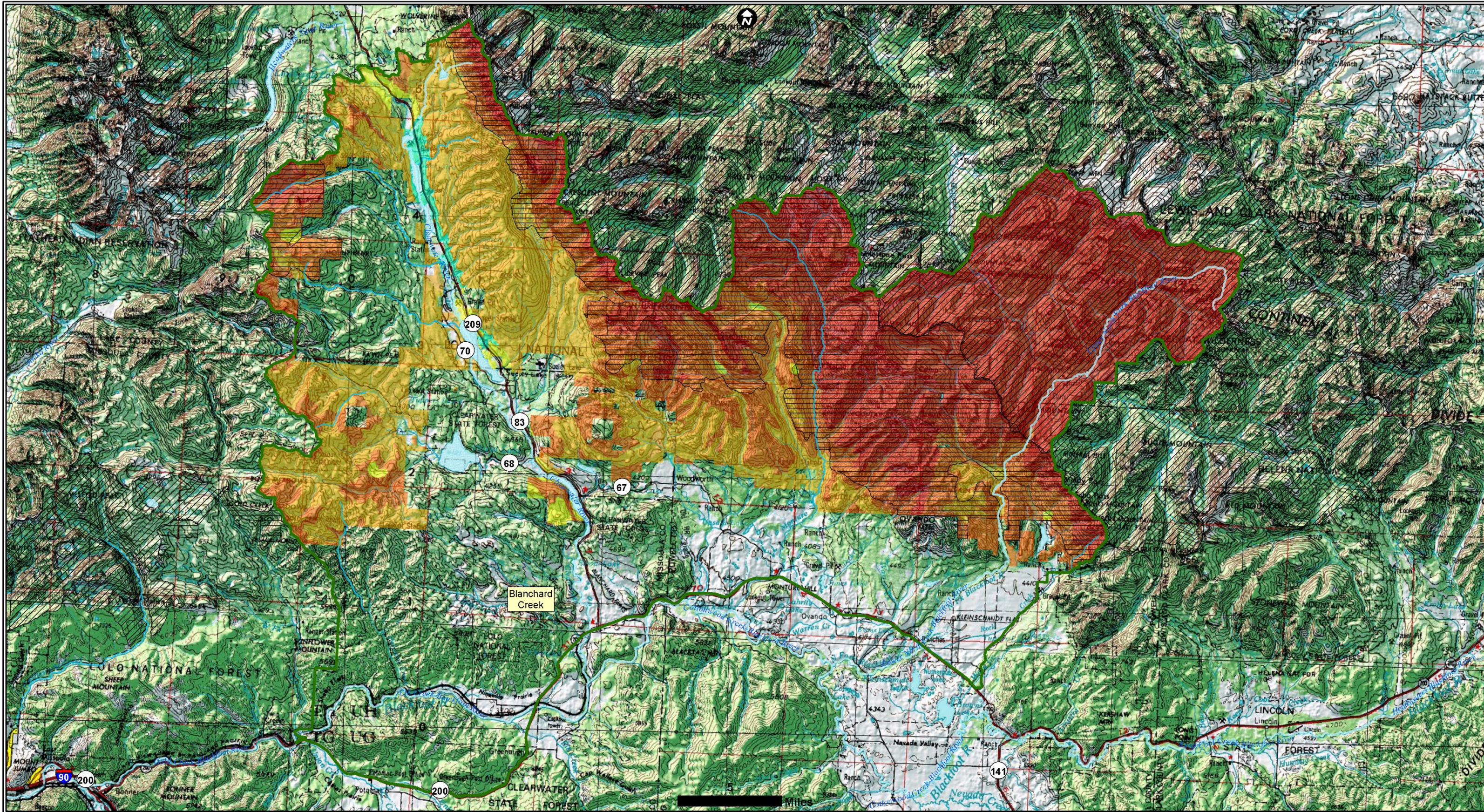


Lolo National Forest Land Management Plan Revision-September Workshop (2023)
Upper Blackfoot Clearwater Geographic Area

Geographic Area Boundary	Semi-Primitive Non-Motorized	Rural
Existing Recreational Opportunity Spectrum	Semi-Primitive Motorized	Urban
Primitive	Roded Natural	

Base map features

Inventoried Roadless Area	Major River
Wilderness Area	Pond/Lake
1986 Proposed Wilderness	



Lolo National Forest Land Management Plan Revision-September Workshop (2023)

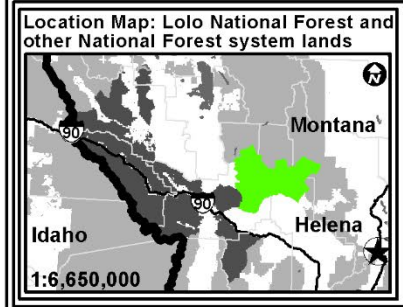
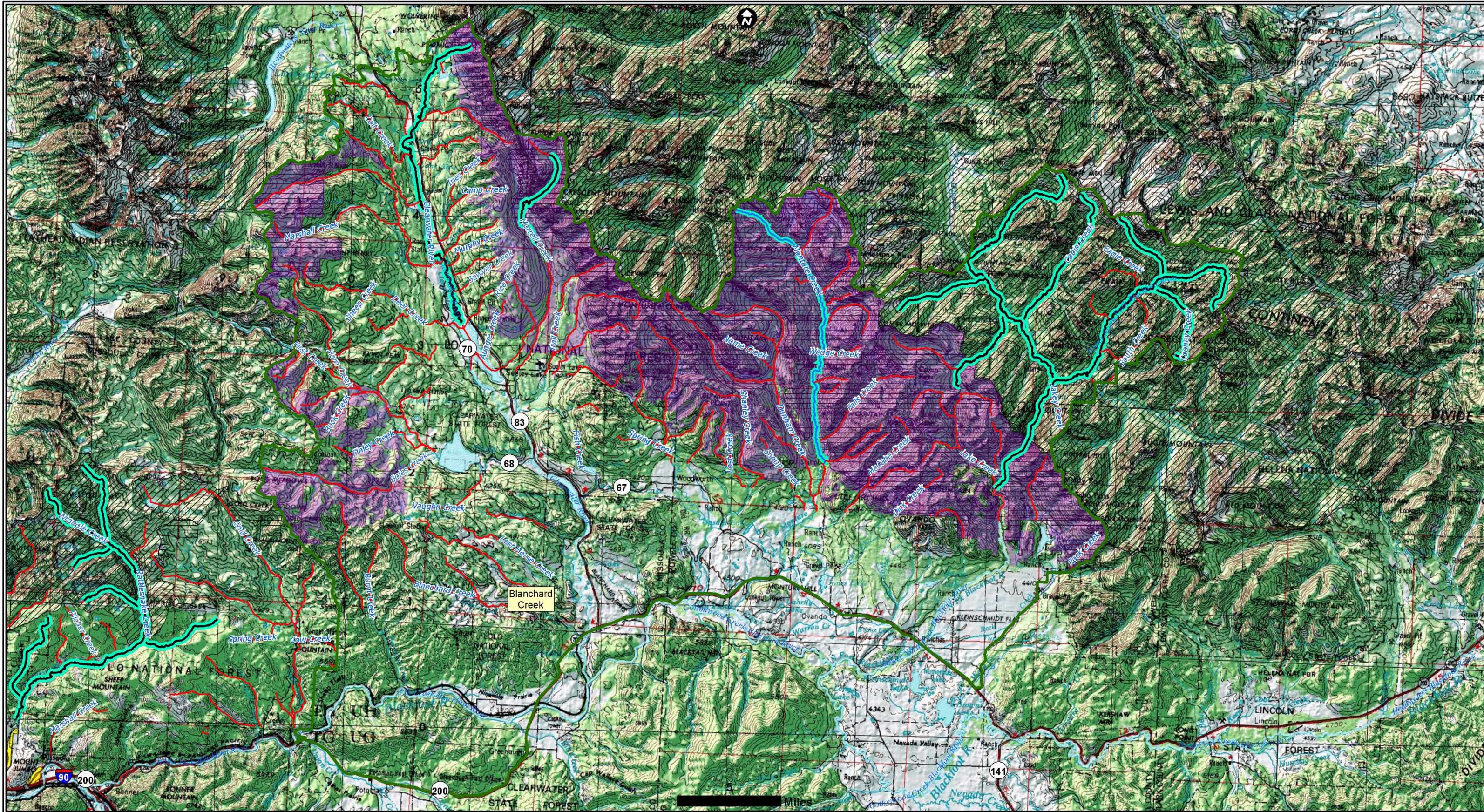
Upper Blackfoot Clearwater Geographic Area

- Geographic Area Boundary
- Existing Winter Recreational Opportunity Spectrum**
- Primitive

- Semi-Primitive Non-Motorized
- Routed Natural
- Semi-Primitive Motorized
- Rural

Base map features

- Inventoried Roadless Area
- Wilderness Area
- 1986 Proposed Wilderness
- Major River
- Pond/Lake



Lolo National Forest Land Management Plan Revision-September Workshop (2023)
Upper Blackfoot Clearwater Geographic Area

Wild/Scenic/Rec River Eligibility Inventory

Previously Studied

Geographic Area Boundary

Ineligible

Eligible or Suitable

No

Draft Wilderness Inventory

Included in Inventory

Include

Base map features

Inventoried Roadless Area

Wilderness Area

1986 Proposed Wilderness

Major River

Pond/Lake