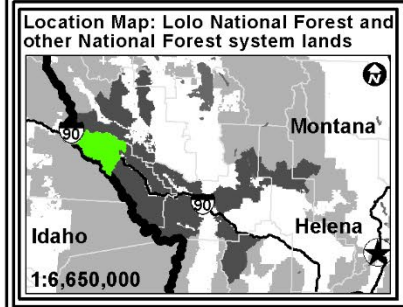
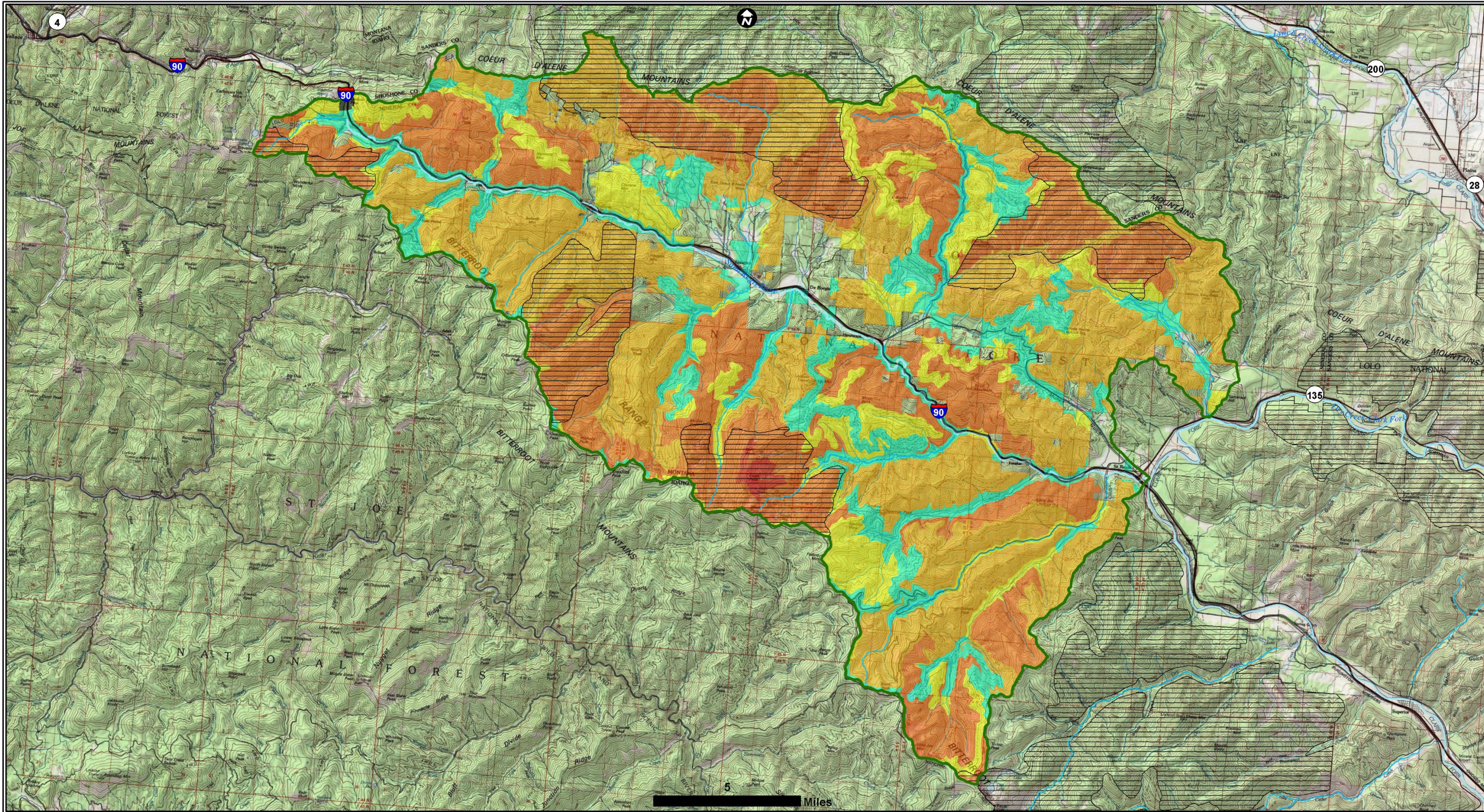


**Lolo National Forest Land Management Plan Revision-September Workshop (2023)  
Saint Regis River Geographic Area**

- Base map features**
- Geographic Area Boundary
  - May be Suitable for Timber Production**
  - Unsuitable
  - Suitable

- Inventoried Roadless Area
- 1986 Proposed Wilderness

- Wildland Urban Interface
- Major River
- Pond/Lake



**Lolo National Forest Land Management Plan Revision-September Workshop (2023)**  
**Saint Regis River Geographic Area**

Geographic Area Boundary

**Existing Recreational Opportunity Spectrum**

Primitive

Semi-Primitive Non-Motorized

Semi-Primitive Motorized

Routed Natural

Rural

Urban

**Base map features**

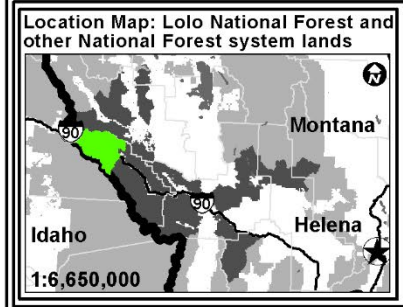
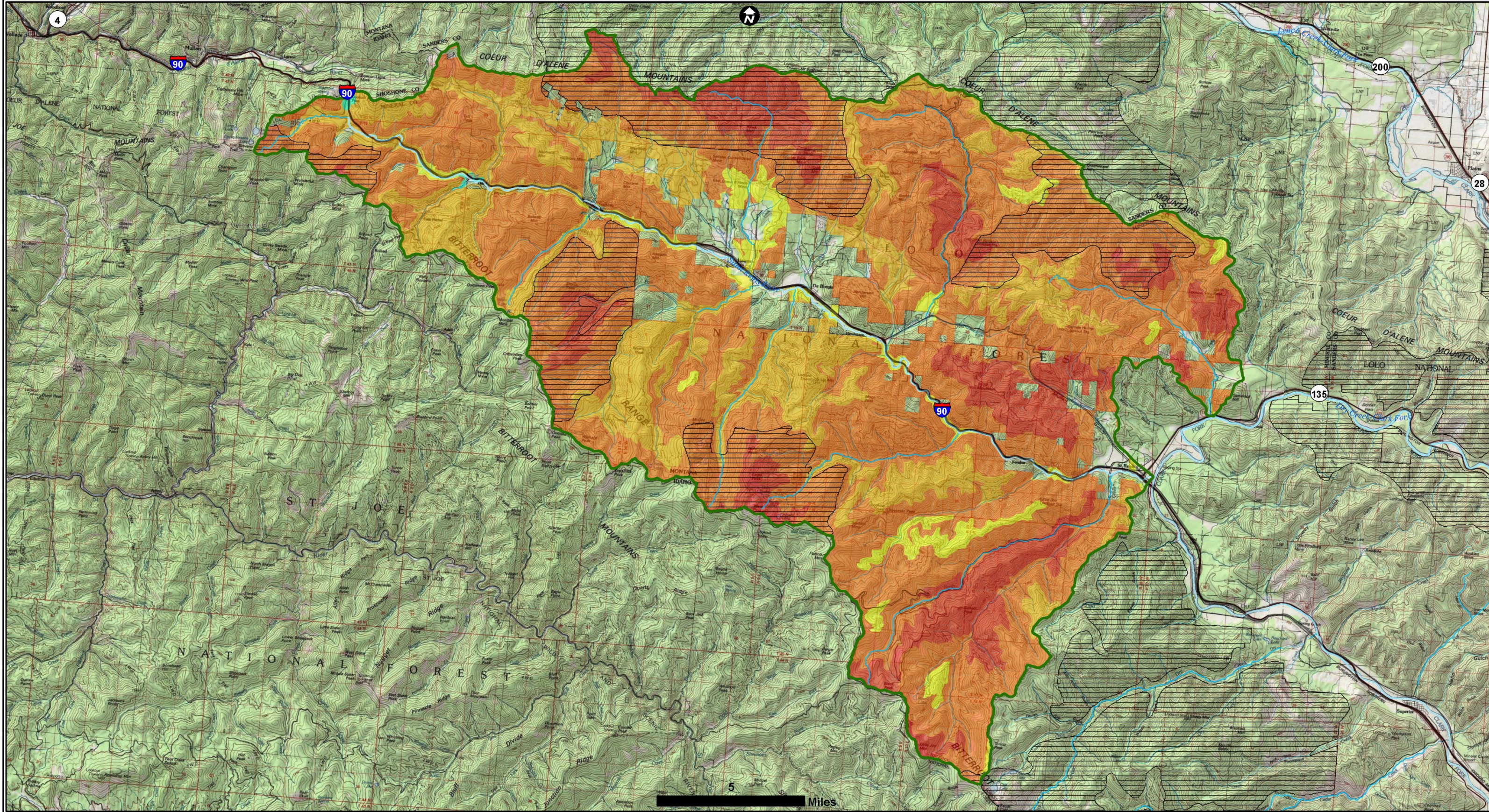
Inventoried Roadless Area

Wilderness Area

1986 Proposed Wilderness

Major River

Pond/Lake



**Lolo National Forest Land Management Plan Revision-September Workshop (2023)**

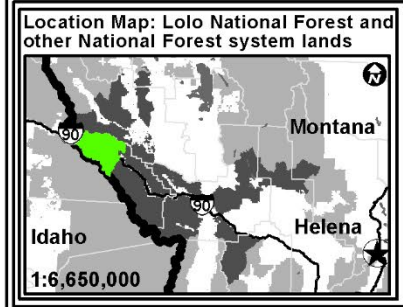
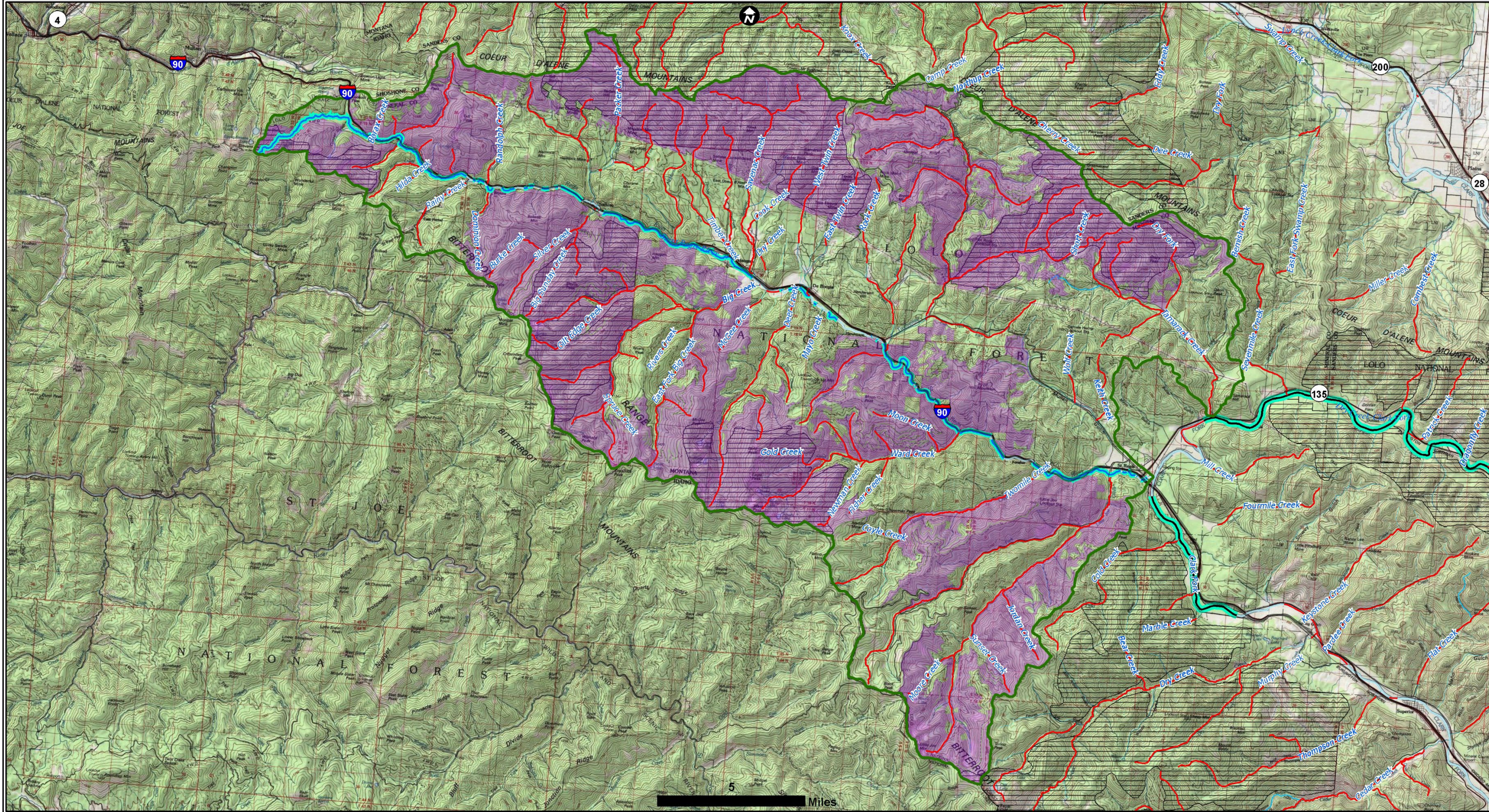
**Saint Regis River Geographic Area**

- Geographic Area Boundary
- Existing Winter Recreational Opportunity Spectrum**
- Primitive

- Semi-Primitive Non-Motorized
- Semi-Primitive Motorized
- Routed Natural
- Rural

**Base map features**

- Inventoried Roadless Area
- Wilderness Area
- 1986 Proposed Wilderness
- Major River
- Pond/Lake



**Lolo National Forest Land Management Plan Revision-September Workshop (2023)**

**Saint Regis River Geographic Area**

Geographic Area Boundary

**Wild/Scenic/Rec River Eligibility Inventory**

**Previously Studied**

No

Ineligible

Eligible or Suitable

**Draft Wilderness Inventory**

**Included in Inventory**

Include

**Base map features**

Inventoried Roadless Area

Wilderness Area

1986 Proposed Wilderness

Major River

Pond/Lake