

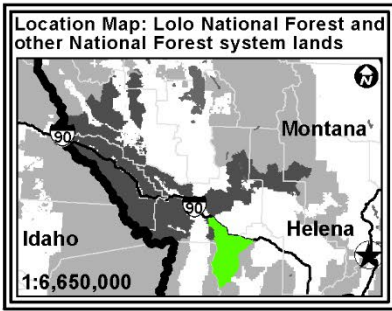
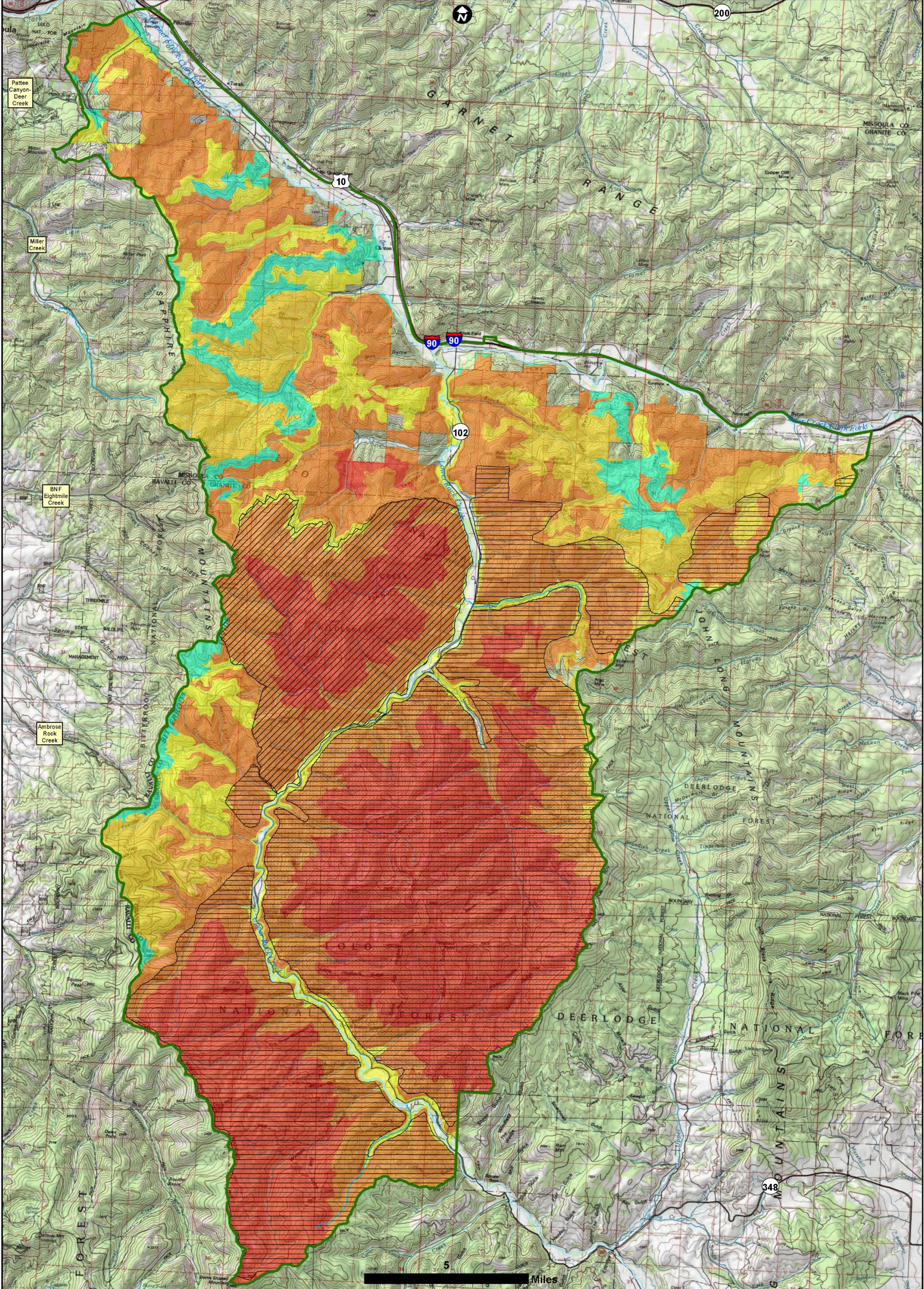
Lolo National Forest Land Management Plan Revision-September Workshop (2023)

Rock Creek Geographic Area

- Geographic Area Boundary
- Maybe Suitable for Timber Production**
- Unsuitable
- Suitable

Base map features

- Lolo Inventoried Roadless Area
- Wilderness Area
- 1986 Proposed Wilderness
- Wildland Urban Interface
- Pond/Lake
- Major River



Lolo National Forest Land Management Plan Revision-September Workshop (2023)

Rock Creek Geographic Area

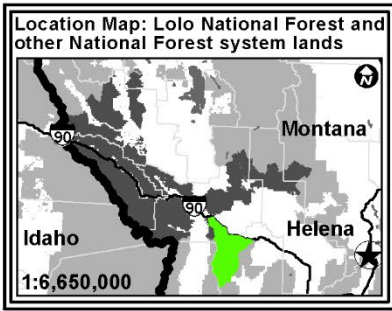
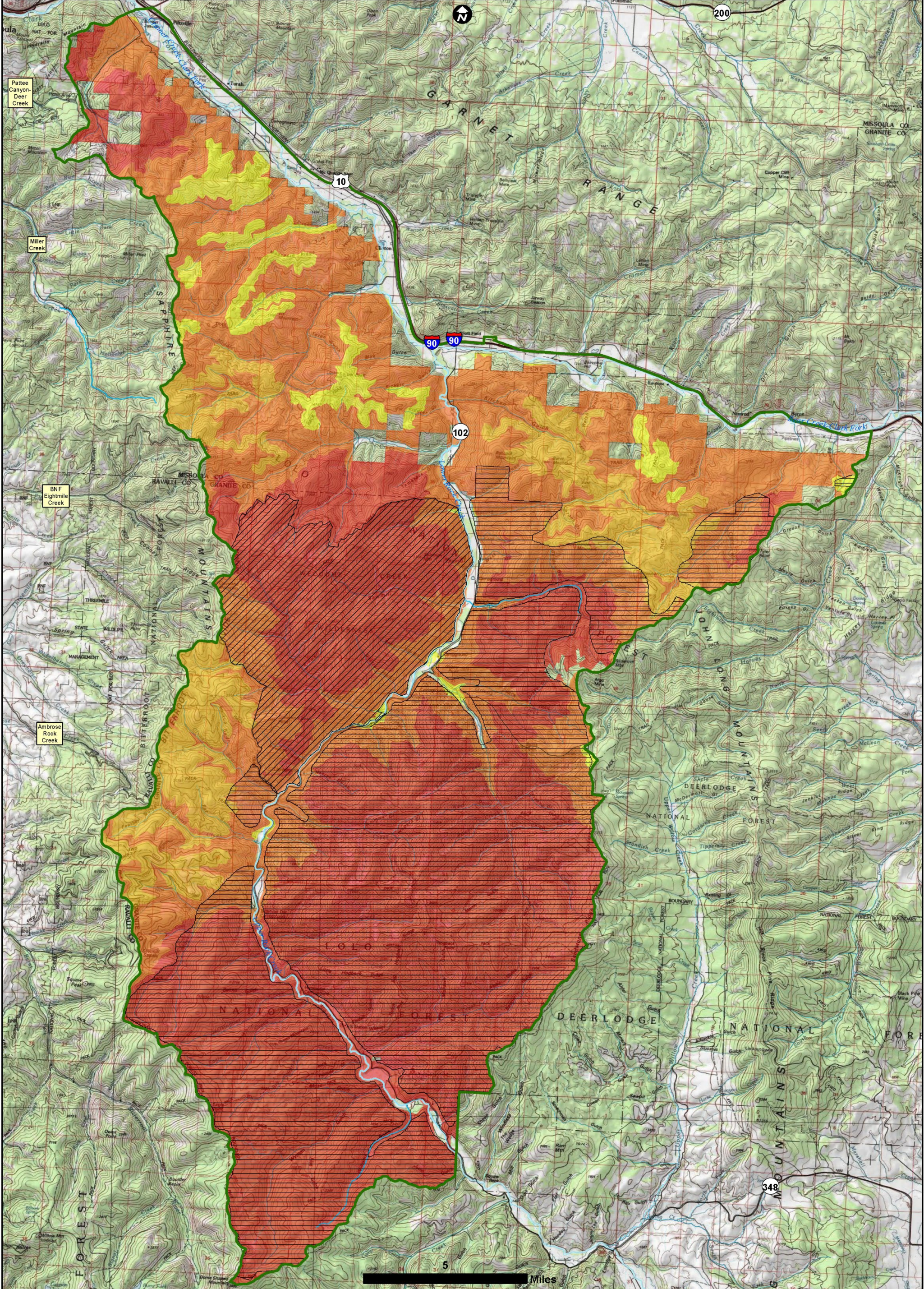
- Geographic Area Boundary

Existing Recreational Opportunity Spectrum

- Primitive
- Semi-Primitive Non-Motorized
- Semi-Primitive Motorized
- Roaded Natural
- Rural
- Urban

Base map features

- Lolo Inventoried Roadless Area
- Wilderness Area
- 1986 Proposed Wilderness
- Major River
- Pond/Lake



Lolo National Forest Land Management Plan Revision-September Workshop (2023)

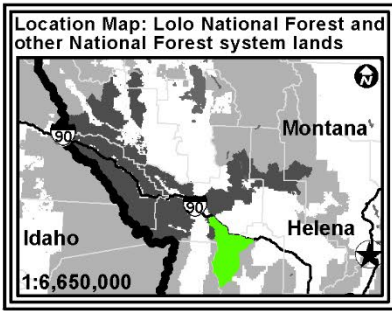
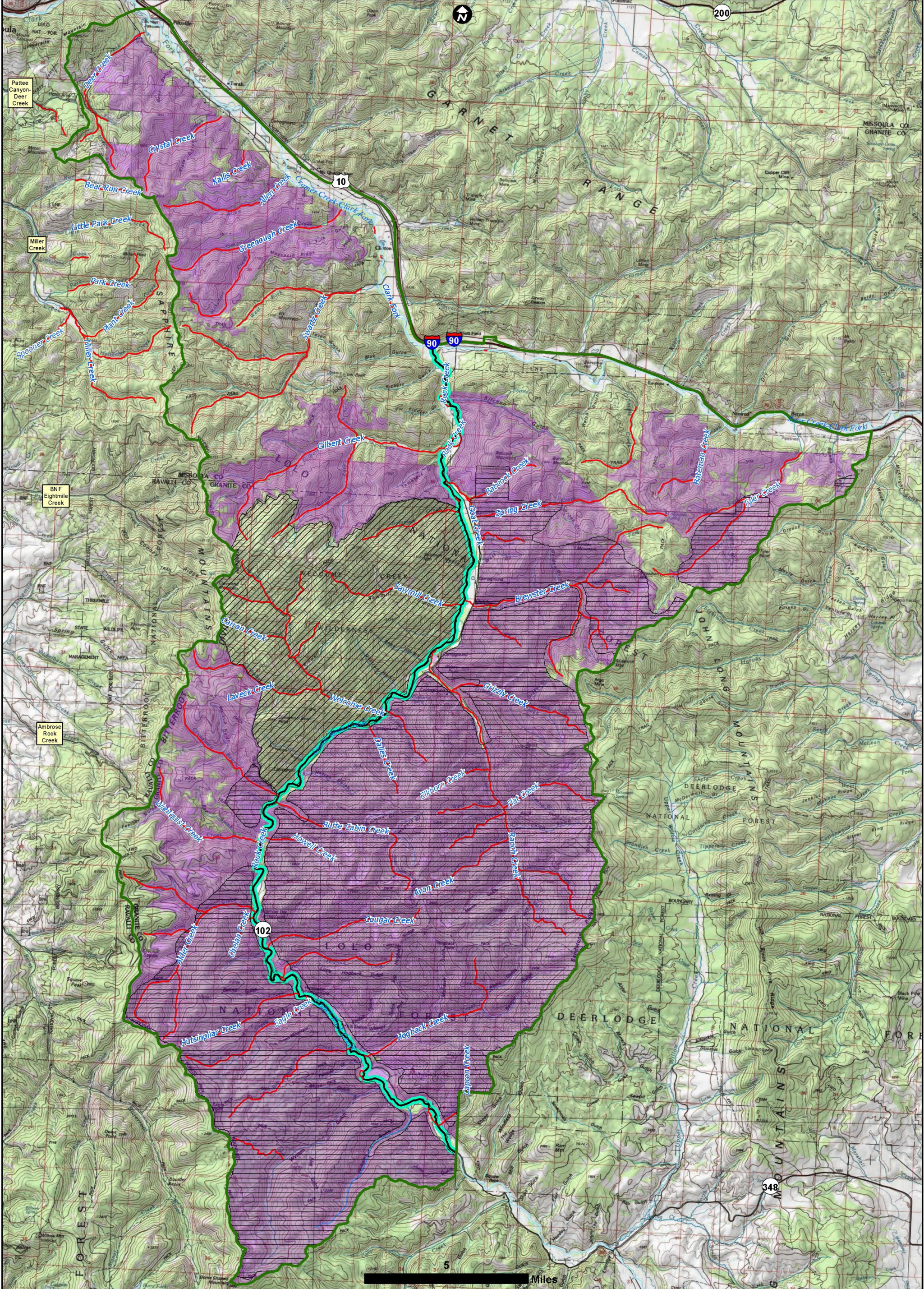
Rock Creek Geographic Area

- Geographic Area Boundary
- Existing Winter Recreational Opportunity Spectrum**
- Primitive
- Semi-Primitive Non-Motorized
- Roaded Natural
- Rural

Base map features

- Lolo Inventoried Roadless Area
- Wilderness Area
- 1986 Proposed Wilderness
- Major River
- Pond/Lake

5 Miles



Lolo National Forest Land Management Plan Revision-September Workshop (2023)

Rock Creek Geographic Area

- Geographic Area Boundary
- Wild/Scenic/Rec River Eligibility Inventory**
- Previously Studied
- No
- Ineligible

WSR cont.

- Eligible or Suitable
- Draft Wilderness Inventory**
- Included in Inventory**
- Included

Base map features

- Lolo Inventoried Roadless Area
- Wilderness Area
- 1986 Proposed Wilderness
- Major River
- Pond/Lake