

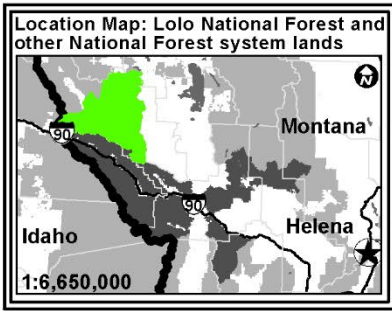
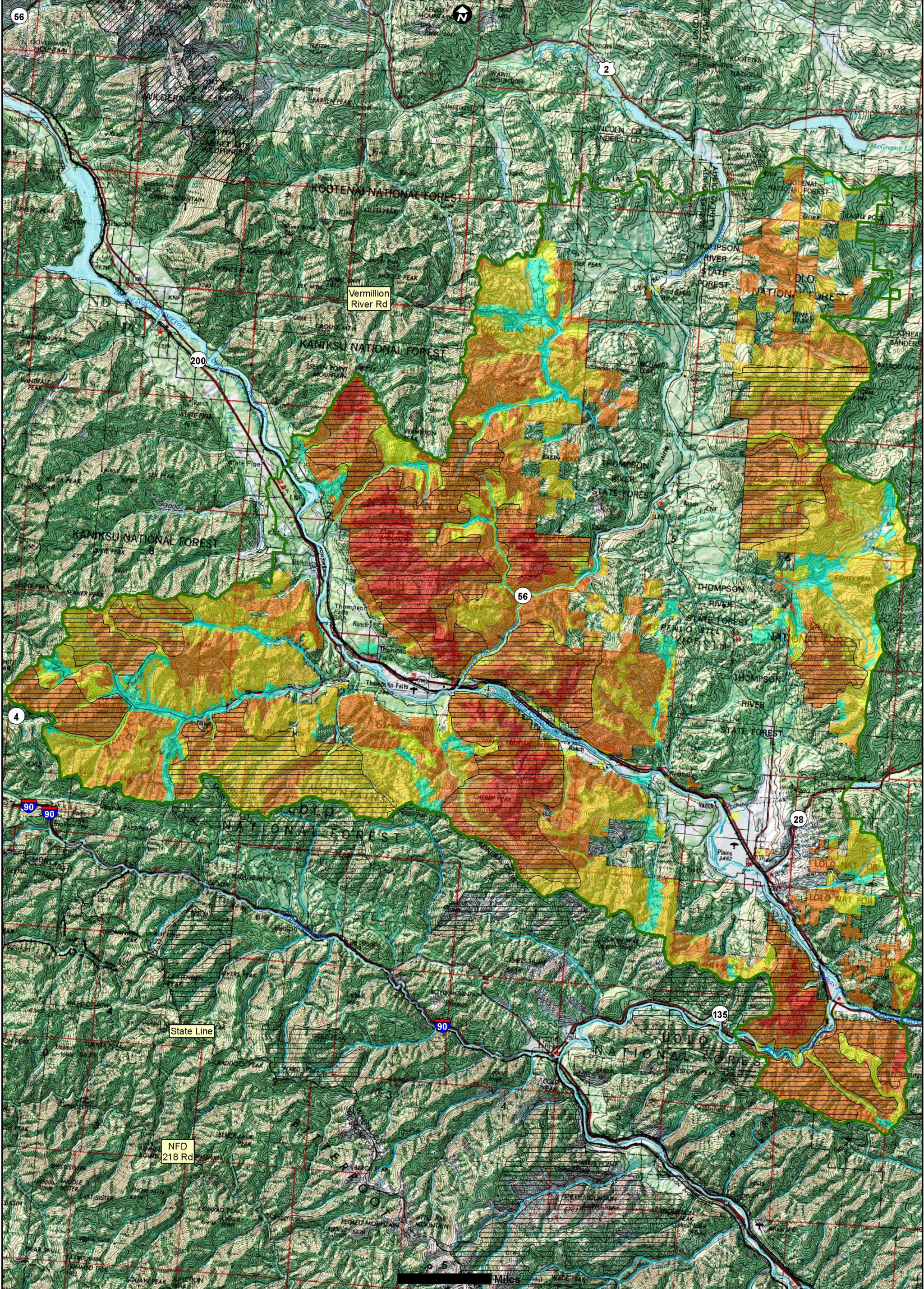
Lolo National Forest Land Management Plan Revision-September Workshop (2023)

Lower Clark Fork Geographic Area

- Geographic Area Boundary
- Maybe Suitable for Timber Production**
- Unsuitable
- Suitable

Base map features

- Lolo Inventoried Roadless Area
- Wilderness Area
- Wildland Urban Interface
- Pond/Lake
- Major River



Lolo National Forest Land Management Plan Revision-September Workshop (2023)

Lower Clark Fork Geographic Area

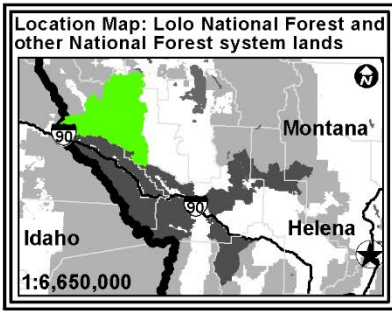
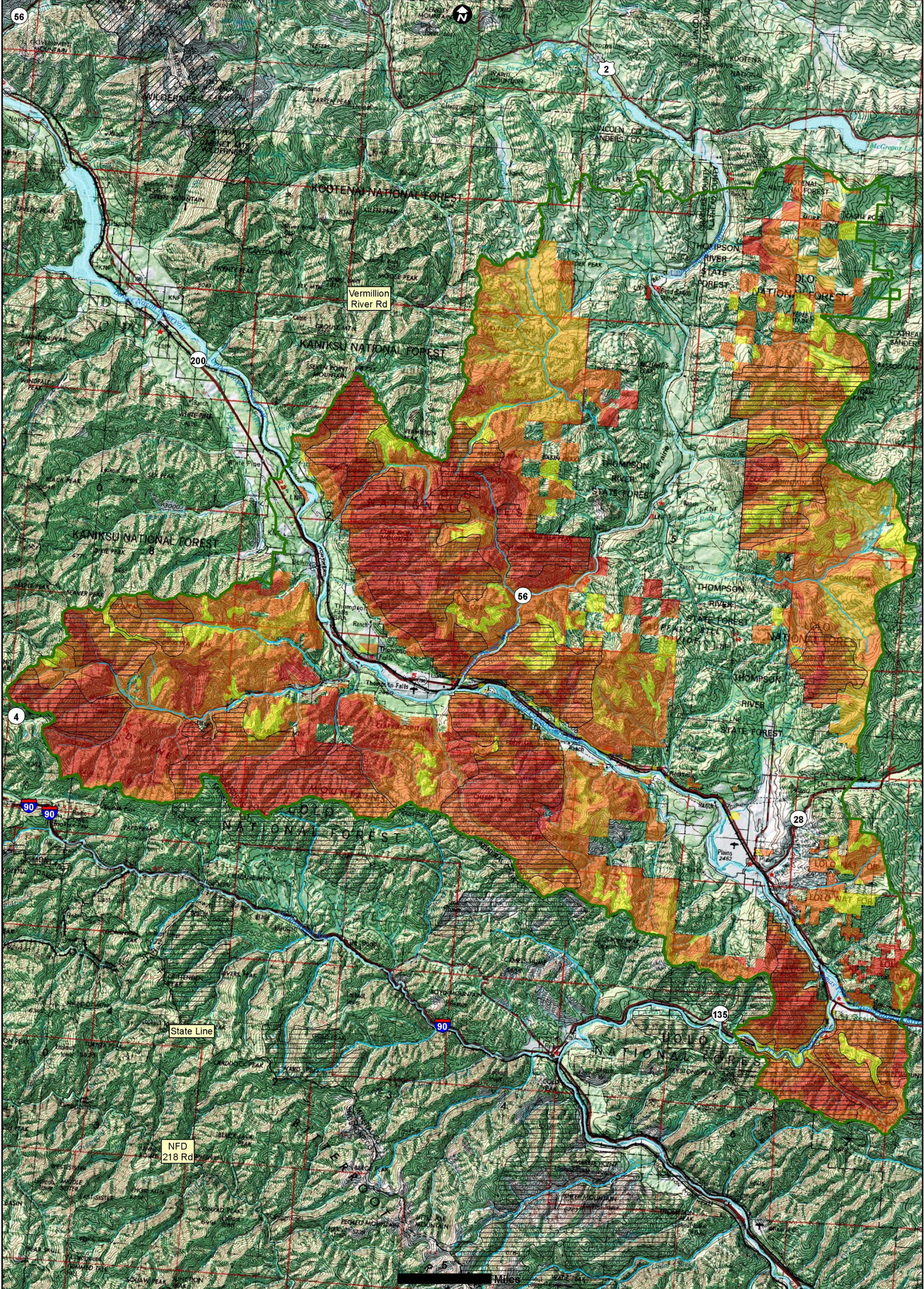
- Geographic Area Boundary

Existing Recreational Opportunity Spectrum

- Primitive
- Semi-Primitive Non-Motorized
- Semi-Primitive Motorized
- Roaded Natural
- Rural
- Urban

Base map features

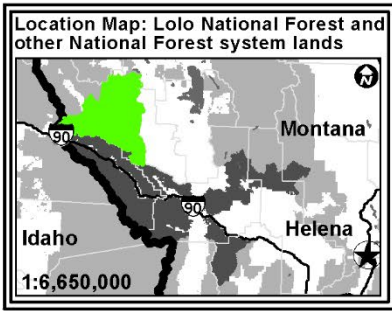
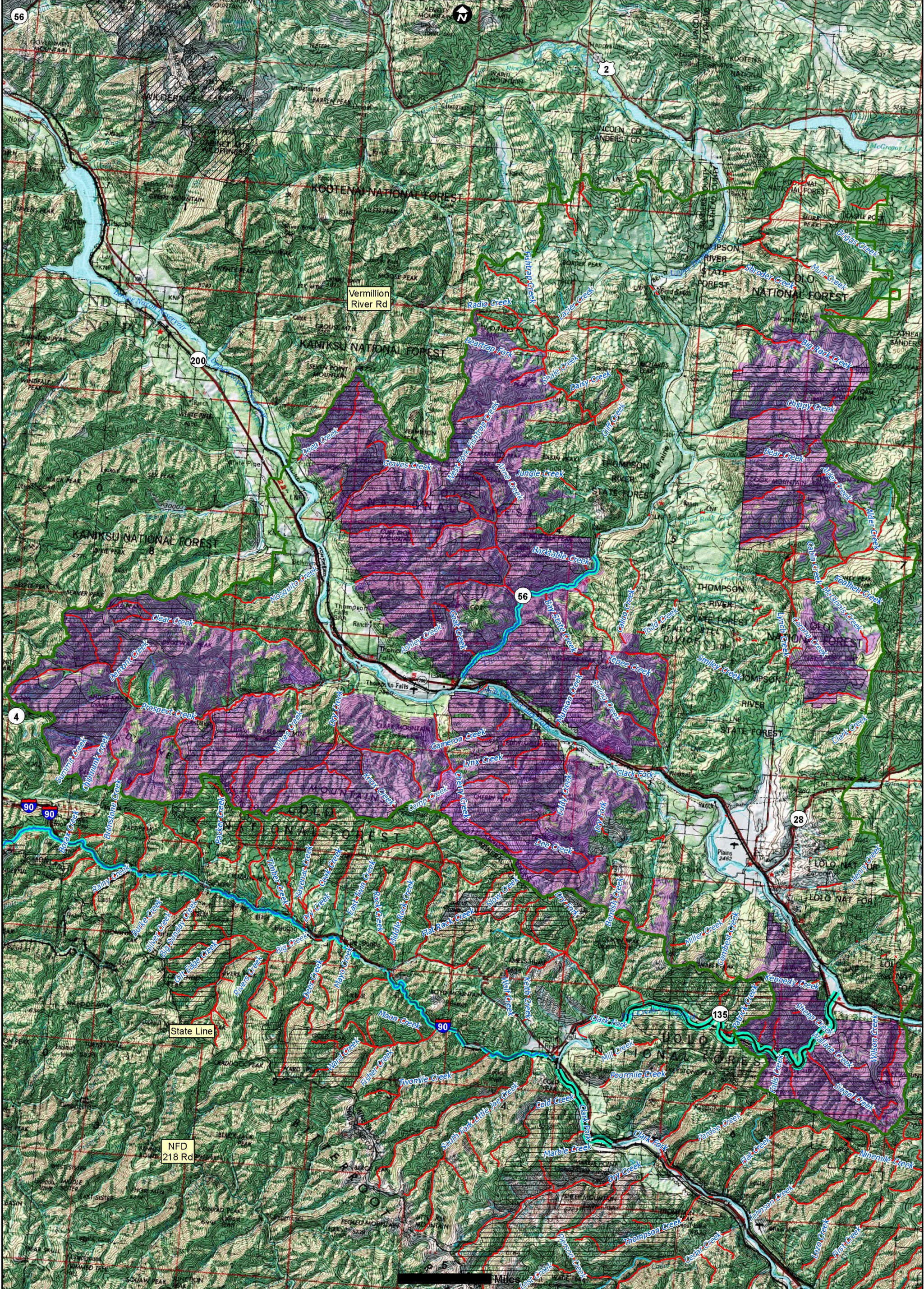
- Lolo Inventoried Roadless Area
- Wilderness Area
- 1986 Proposed Wilderness
- Major River
- Pond/Lake



Lolo National Forest Land Management Plan Revision-September Workshop (2023)
Lower Clark Fork Geographic Area

- Existing Winter Recreational Opportunity Spectrum**
- Primitive
 - Semi-Primitive Non-Motorized
 - Routed Natural
 - Rural
 - Semi-Primitive Motorized

- Base map features**
- Geographic Area Boundary
 - Lolo Inventoried Roadless Area
 - Wilderness Area
 - 1986 Proposed Wilderness
 - Major River
 - Pond/Lake



Lolo National Forest Land Management Plan Revision-September Workshop (2023)

Lower Clark Fork Geographic Area

- Wild/Scenic/Rec River Eligibility Inventory**
- Geographic Area Boundary
 - No
 - Ineligible
 - Previously Studied
 - Included

WSR cont.

- Eligible or Suitable
- Draft Wilderness Inventory
- Included in Inventory

Base map features

- Lolo Inventoried Roadless Area
- Wilderness Area
- 1986 Proposed Wilderness
- Major River
- Pond/Lake