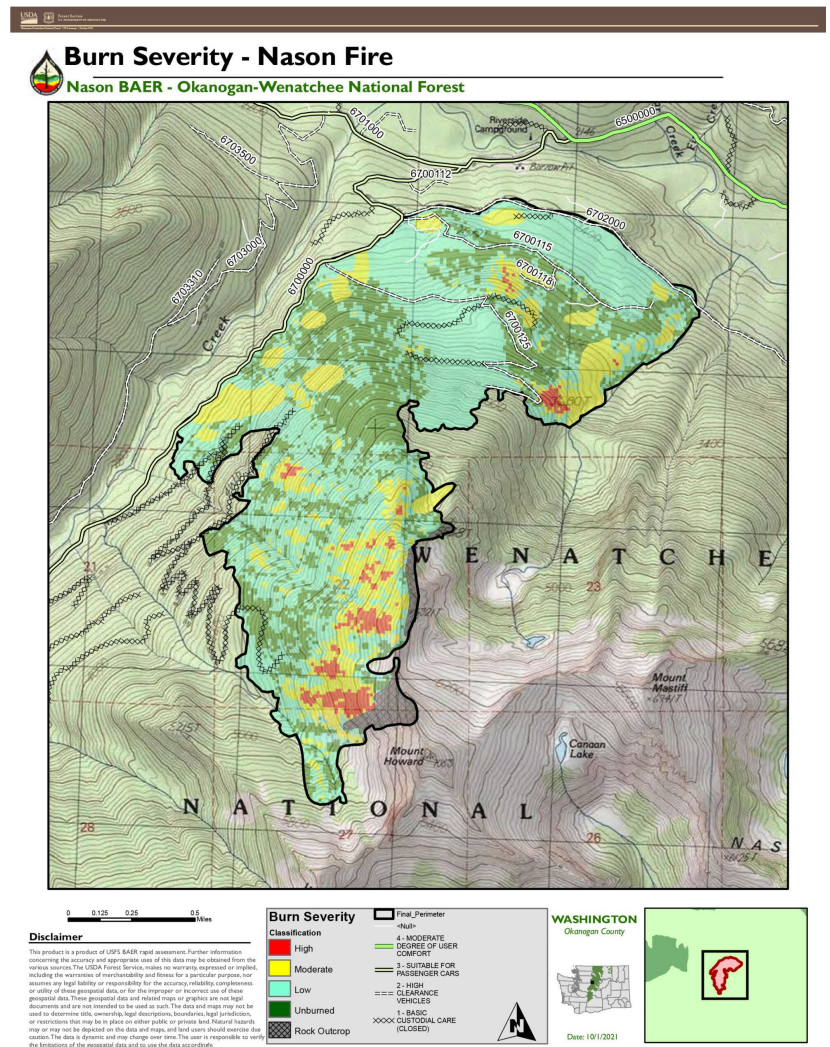




NASON FIRE

Maps

Soil Burn Severity Map



- **JPG** and **PDF** format
- **KMZ** files are also available to view maps in greater detail in

Google Earth (and many other mapping programs). Download the **KMZ zip file**, then double-click it to extract the KMZ files and save to your computer. Open the Google Earth program. [If you don't already have Google Earth, you can download and install it for free **HERE**.] Drag the KMZ file onto the Google Earth program icon or main screen (or in Google Earth, click File, Import and select the KMZ file). After the KMZ file loads, you can zoom way in for more detail, change the angle of view, show or hide layers, and adjust transparency of layers.

ABOUT THIS SITE

The Okanogan-Wenatchee National Forest assembled a Burned Area Emergency Response (BAER) assessment team to analyze post-fire condition of burned watersheds and to plan emergency stabilization treatments for Central Washington wildfires.

PHOTO

Home page and banner photo: Cedar Creek Fire

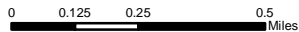
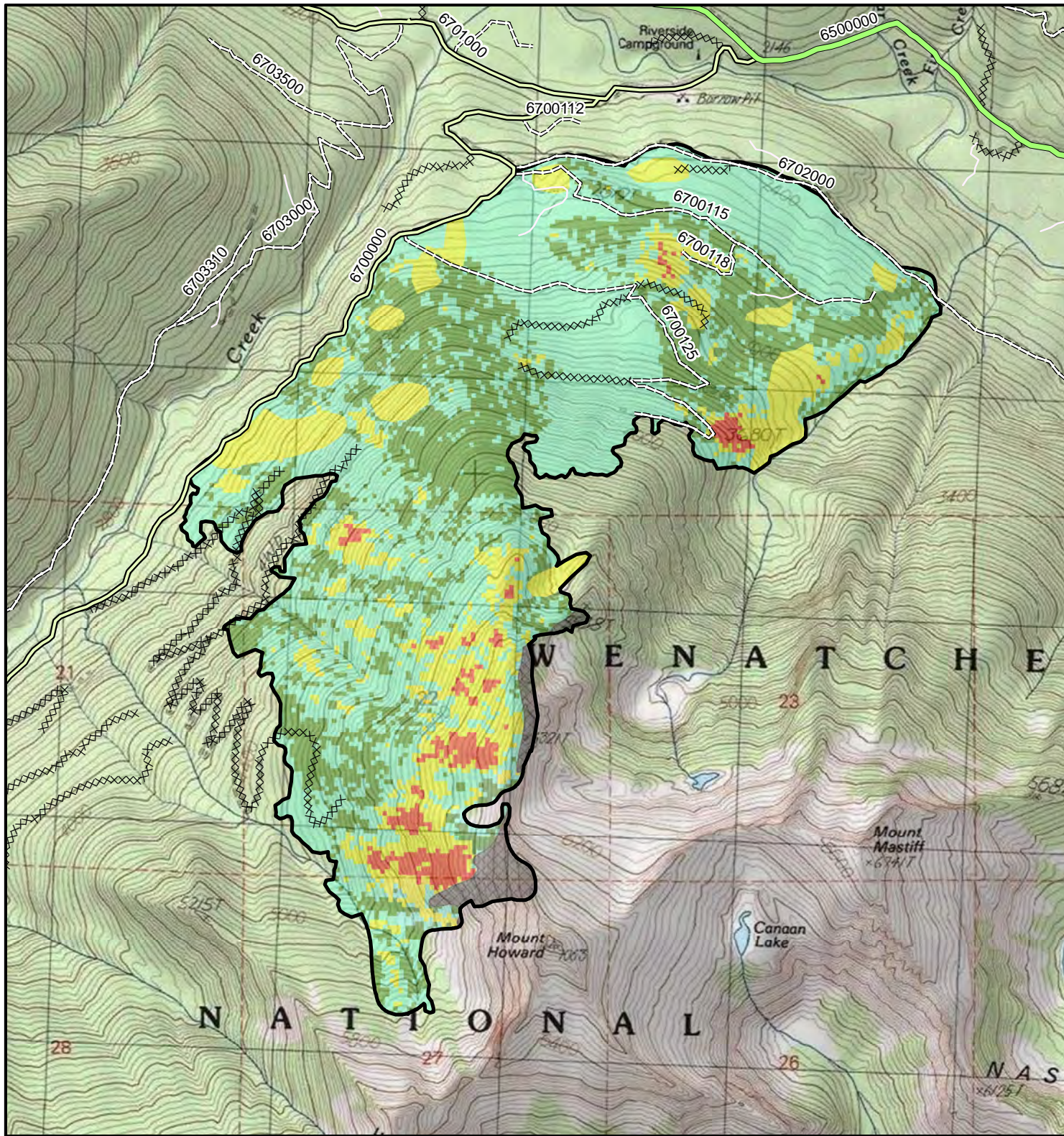
SEARCH

Proudly powered by WordPress



Burn Severity - Nason Fire

Nason BAER - Okanogan-Wenatchee National Forest



Disclaimer

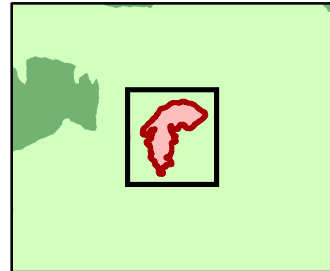
This product is a product of USFS BAER rapid assessment. Further information concerning the accuracy and appropriate uses of this data may be obtained from the various sources. The USDA Forest Service, makes no warranty, expressed or implied, including the warranties of merchantability and fitness for a particular purpose, nor assumes any legal liability or responsibility for the accuracy, reliability, completeness or utility of these geospatial data, or for the improper or incorrect use of these geospatial data. These geospatial data and related maps or graphics are not legal documents and are not intended to be used as such. The data and maps may not be used to determine title, ownership, legal descriptions, boundaries, legal jurisdiction, or restrictions that may be in place on either public or private land. Natural hazards may or may not be depicted on the data and maps, and land users should exercise due caution. The data is dynamic and may change over time. The user is responsible to verify the limitations of the geospatial data and to use the data accordingly.

Burn Severity	
Classification	Final_Perimeter
High	<Null>
Moderate	4 - MODERATE DEGREE OF USER COMFORT
Low	3 - SUITABLE FOR PASSENGER CARS
Unburned	2 - HIGH CLEARANCE VEHICLES
Rock Outcrop	1 - BASIC CUSTODIAL CARE (CLOSED)

WASHINGTON
Okanogan County



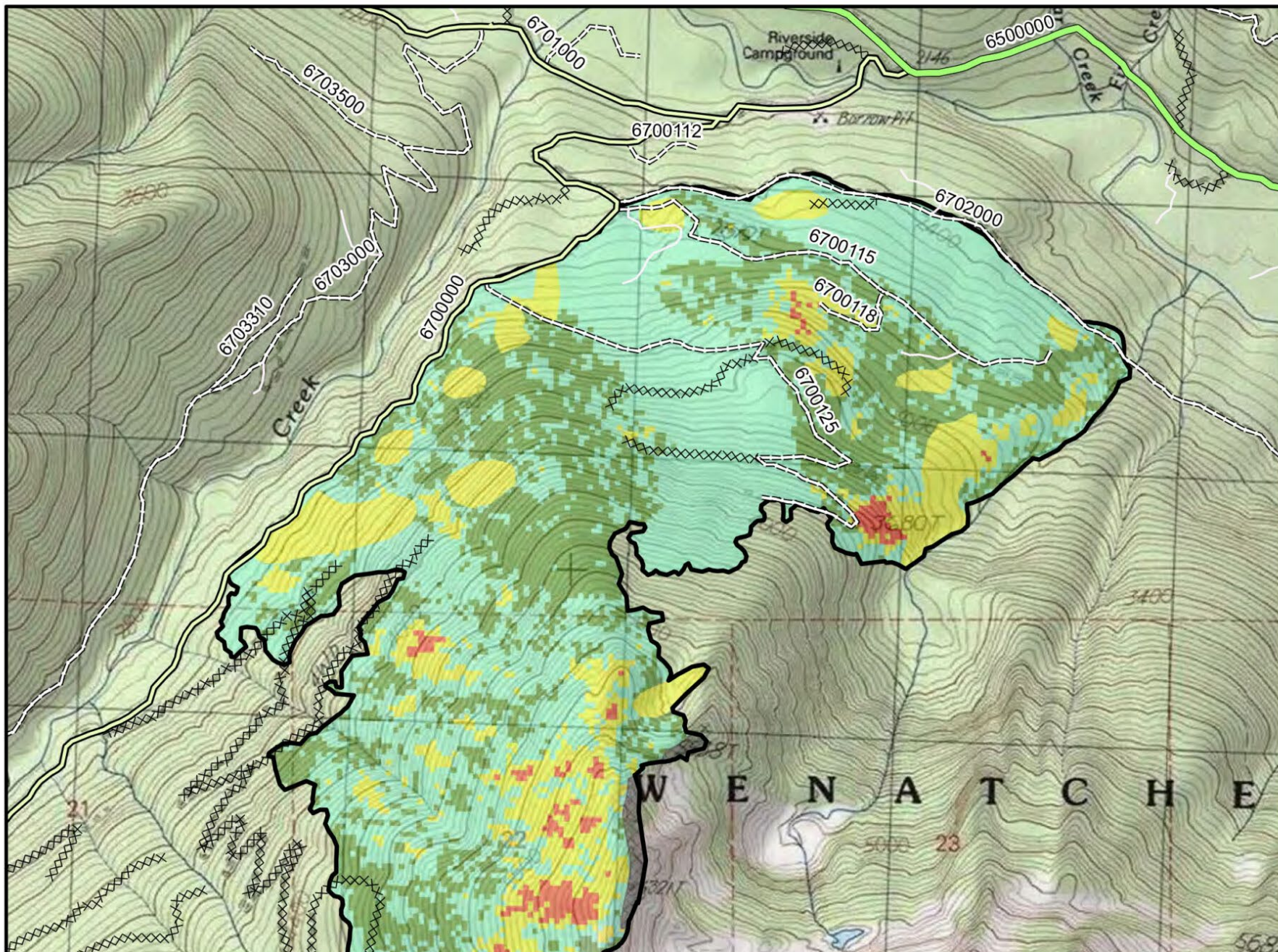
Date: 10/1/2021

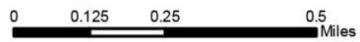
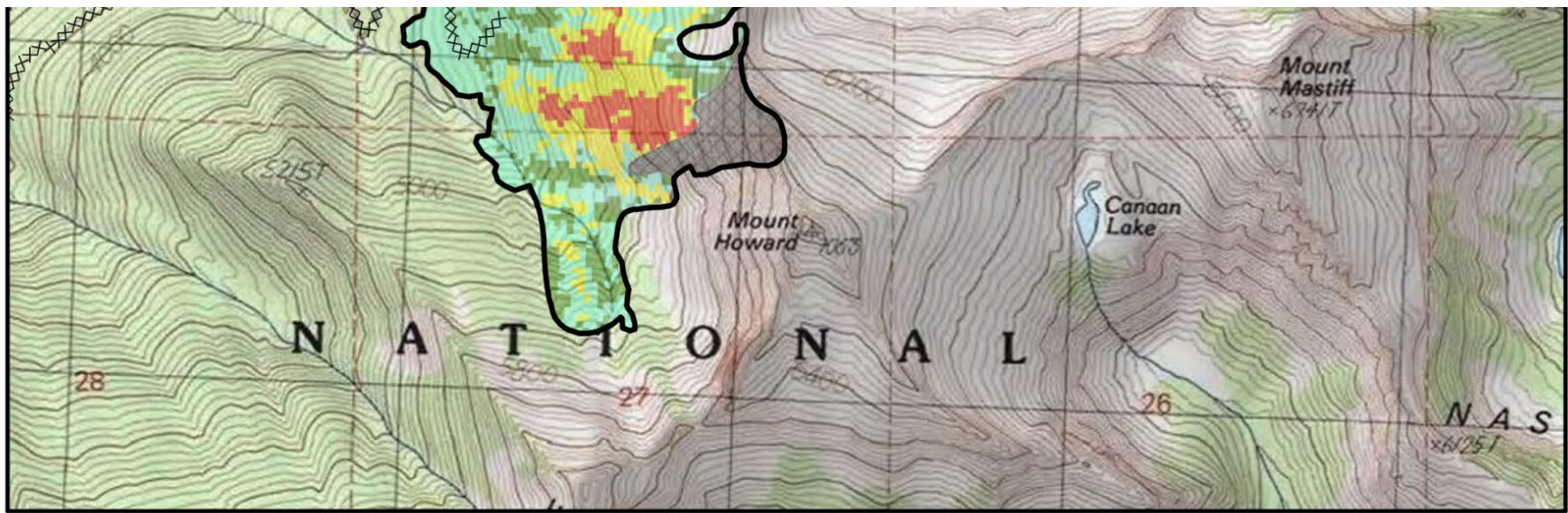




Burn Severity - Nason Fire

Nason BAER - Okanogan-Wenatchee National Forest






Disclaimer

This product is a product of USFS BAER rapid assessment. Further information concerning the accuracy and appropriate uses of this data may be obtained from the various sources. The USDA Forest Service, makes no warranty, expressed or implied, including the warranties of merchantability and fitness for a particular purpose, nor assumes any legal liability or responsibility for the accuracy, reliability, completeness or utility of these geospatial data, or for the improper or incorrect use of these geospatial data. These geospatial data and related maps or graphics are not legal documents and are not intended to be used as such. The data and maps may not be used to determine title, ownership, legal descriptions, boundaries, legal jurisdiction, or restrictions that may be in place on either public or private land. Natural hazards may or may not be depicted on the data and maps, and land users should exercise due caution. The data is dynamic and may change over time. The user is responsible to verify the limitations of the geospatial data and to use the data accordingly.

Burn Severity	
Classification	Final_Perimeter
High	<Null>
Moderate	4 - MODERATE DEGREE OF USER COMFORT
Low	3 - SUITABLE FOR PASSENGER CARS
Unburned	2 - HIGH CLEARANCE VEHICLES
Rock Outcrop	1 - BASIC CUSTODIAL CARE (CLOSED)



WASHINGTON
Okanagan County



Date: 10/1/2021

