



**U.S. Department of Agriculture, U.S. Forest Service
Arapaho and Roosevelt National Forests
and Pawnee National Grassland
Sulphur Ranger District**

Road Closure

PROHIBITIONS

Pursuant to 16 U.S.C. § 551 and 36 C.F.R. § 261.50(b), the following is prohibited on the National Forest System (NFS) road in the Sulphur Ranger District, Arapaho and Roosevelt National Forests and Pawnee National Grassland, described below and shown on the attached map incorporated into this Order as Exhibit A (the "Described Road"):

1. Being on the Described Road. 36 C.F.R. § 261.54(e)

EXEMPTIONS

Pursuant to 36 C.F.R. § 261.50(e), the following persons are exempt from this Order:

1. Persons with Forest Service Permit No. FS-7700-48 (Permit for Use of Roads, Trails, or Areas Restricted by Regulation or Order), specifically exempting them from this Order or a written determination by a Forest Service authorized officer that a permit is not required under 36 C.F.R. § 251.50(e)(1) or (2).
2. Any Federal, State, or Local Officer, or member of an organized rescue or firefighting force in the performance of an official duty.
3. Authorized Federal and State personnel conducting the bridge maintenance operations work in the course of their official duties.

DESCRIBED ROAD

The Described Road is in Grand County, Colorado and includes only the Little Muddy Creek Bridge on NFSR 134.1, where Forest Service trail N135 intersects with NFSR 134.1, and is located 3.7 miles from the intersection of County Road 340 and 7.2 miles from the intersection of NFSR 139.

PURPOSE

The purpose of this Order is to protect public safety on the road and bridge.

IMPLEMENTATION

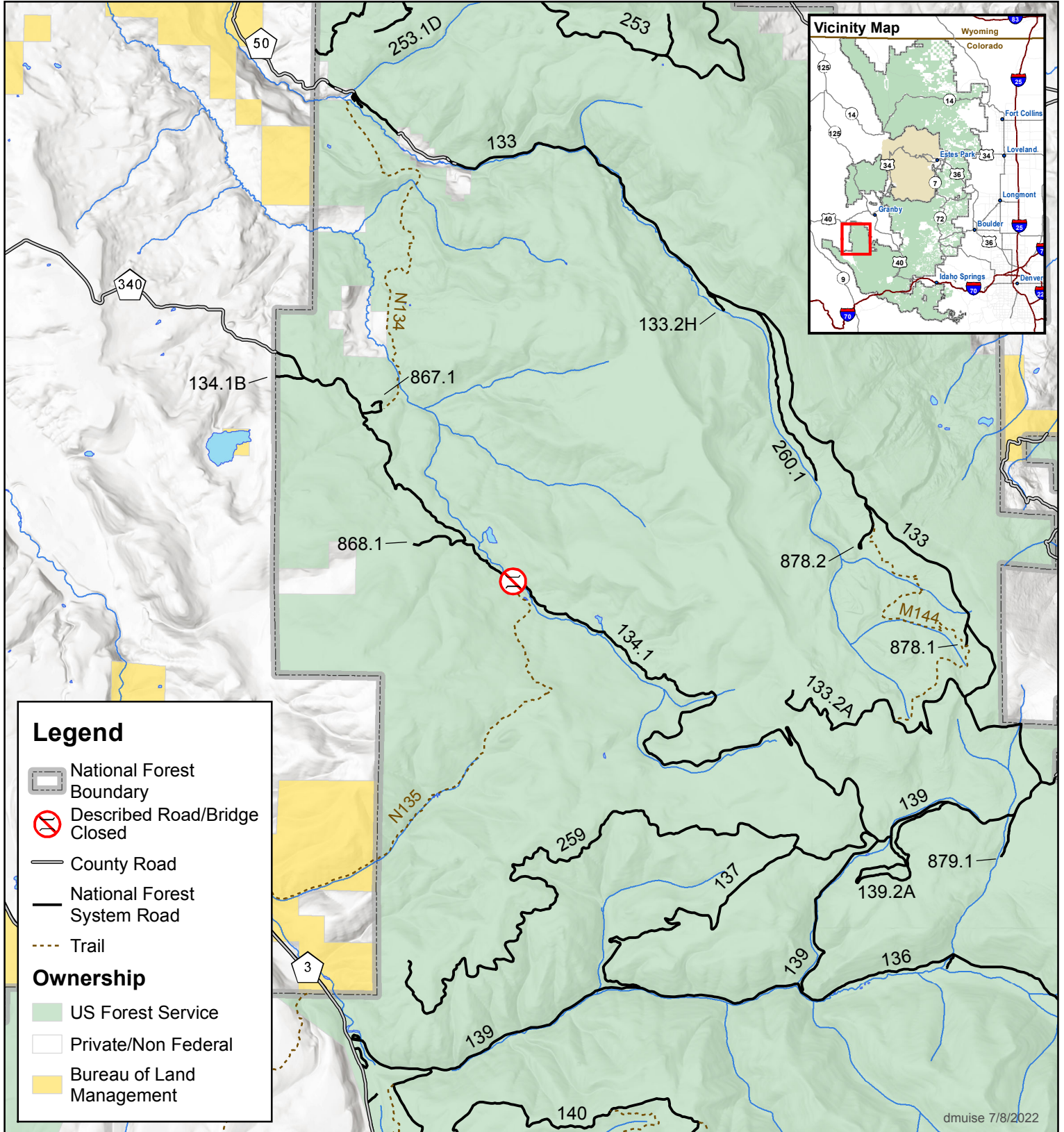
1. This Order shall be in effect from August 6, 2023, at 12:00 AM through August 6, 2028, at 11:59 PM, unless rescinded.
2. A map identifying the Described Road is attached and made part of this Order as Exhibit A. For a digital version of this Order and Exhibit A, go to <https://www.fs.usda.gov/alerts/arp/alerts-notice>.
3. Unless otherwise expressly defined in this Order, the terms used in this Order are defined by the regulations of the Secretary of Agriculture, 36 C.F.R. Chapter II, Parts 200-299. If there are terms in this Order that are not expressly defined in the Order or 36 C.F.R. Chapter II, Parts 200-299, their meaning shall be determined by their plain language definitions.
4. A violation of the above prohibitions is punishable as a Class B misdemeanor by a fine of not more than \$5,000 for individuals and \$10,000 for organizations, or by imprisonment for not more than six months, or both. 16 U.S.C. § 551; 18 U.S.C. §§ 3559, 3571, and 3581.
5. Contact the Sulphur Ranger District or the Arapaho and Roosevelt National Forests and Pawnee National Grassland Supervisor's Office in Fort Collins, (970) 295-6600, for more information about this Order.
6. This Order supersedes Order #ARP-SRD-2022-05 prohibiting the same or similar acts on the same Described Road.

Signed and issued on August 6, 2023

MONTE WILLIAMS
Forest Supervisor
Arapaho and Roosevelt National Forests and Pawnee National Grassland

Exhibit A - Little Muddy Creek Bridge Closure

Order # ARP-SRD-2023-07



Disclaimer: This map is for display purposes only and not for navigation. The Forest Service reserves the right to correct, update, modify or replace GIS products without notification. The Forest Service uses the most current and complete data it has available. GIS data and product accuracy may vary. For more information, contact the Arapaho-Roosevelt National Forests and Pawnee National Grassland Supervisor's Office 2150 Centre Ave Ft Collins, CO 80526 970-295-6600



dmuise 7/8/2022