

ORDER NO. 05-04-50-23-05  
ANSEL ADAMS AND JOHN MUIR WILDERNESSES  
INYO NATIONAL FOREST  
Exhibit A

A. Ansel Adams Wilderness

1. In the Bloody Canyon Drainage, within 3/10 mile of Sardine Creek from 6/10 mile downstream of Lower Sardine Lake, then west along the Creek to 3/10 mile west of Sardine Lake, as shown on Exhibit E.
2. In the Parker Canyon Drainage, within 3/10 mile of Parker Creek from 1/10 mile downstream of the Parker Lake outlet, then west along the Creek to the headwaters of the drainage, as shown on Exhibit E.
3. In the Gem Lake area, within 1/4 mile of the north shore of Gem Lake from the Gem Lake outlet, then northwest along the shore of the lake to the Gem Cabin in the NE 1/4 of Township 2 South, Range 25 East, Section 24, as shown on Exhibit F.
4. In the Rush Creek Drainage, within 1.6 miles of Rush Creek from 1/4 mile west of its intersection with the Rush Creek Trail and the Clark Lake Trail, then west along the Creek to the meadow west of Lower Davis Lake, as shown on Exhibit F.
5. In the Thousand Island Lake area, within 7/10 mile of Thousand Island Lake, as shown on Exhibit F.
6. In the Thousand Island Lake area, within 7/10 mile of Emerald Lake, as shown on Exhibit F.
7. In the Thousand Island Lake area, within 7/10 mile of Ruby Lake, as shown on Exhibit F.
8. In the Thousand Island Lake area, within 7/10 mile of Badger Lakes, as shown on Exhibit F.
9. In the Thousand Island Lake area, within 1 mile of Clark Lakes, as shown on Exhibit F.
10. In the Garnet Lake area, within 1/2 mile of Garnet Lake, as shown on Exhibit F.
11. In the Shadow Creek Drainage, within 1 mile of Shadow Creek from the Shadow Lake outlet, then west along the Creek to 6/10 mile west of Ediza Lake, as shown on Exhibit G.
12. In the Shadow Creek Drainage, within 1/4 mile of the Shadow Lake outlet, as shown on Exhibit G.
13. In the Shadow Creek Drainage, within 1/4 mile of Iceberg Lake, as shown on Exhibit G.
14. In the Minaret Lakes area, within 1/2 mile of Minaret Lakes, as shown on Exhibit G.

ORDER NO. 05-04-50-23-05  
ANSEL ADAMS AND JOHN MUIR WILDERNESSES  
INYO NATIONAL FOREST  
Exhibit A

15. In the Minaret Lakes area, within 1/4 mile of Deadhorse Lake, as shown on Exhibit G.
16. In the Minaret Lakes area, within 1/4 mile of the Deadhorse Lake outlet stream from the outlet, then west along the stream to 1/10 mile before its junction with Minaret Creek, as shown on Exhibit G.
17. In the King Creek Drainage, within 1/10 mile of Beck Lakes, as shown on Exhibit H.
18. In the King Creek Drainage, within 1/4 mile of the eastern Beck Lake outlet stream from the outlet, then east along the stream for a distance of 2/10 mile, as shown on Exhibit H.
19. In the King Creek Drainage, within 1/2 mile of Holcomb Lake, as shown on Exhibit H.
20. In the King Creek Drainage, within 3/10 mile of Ashley Lake, as shown on Exhibit H.
21. In the King Creek Drainage, within 4/10 mile of Anona Lake, as shown on Exhibit H.
22. In the King Creek Drainage, within 2/10 mile of the north, south, west shores of Fern Lake, as shown on Exhibit H.

B. John Muir Wilderness

1. In the Cold Water Drainage, within 2/10 mile of Heart Lake, as shown on Exhibit I.
2. In the Cold Water Drainage, within 2/10 mile of Arrowhead Lake, as shown on Exhibit I.
3. In the Cold Water Drainage, within 2/10 mile of Skelton Lake; as shown on Exhibit I.
4. In the Cold Water Drainage, between Mammoth Creek and Cold Water Creek from the John Muir Wilderness boundary to Golden Meadow, as shown on Exhibit I.
5. In the Duck Creek area, within 6/10 mile of the junction of the Pacific Crest Trail and Duck Creek, as shown on Exhibit J.
6. In the Purple Lake area, within 1/10 mile of Purple Lake, as shown on Exhibit J.
7. In the Purple Lake area, within 1/4 mile of Purple Creek from the Purple Lake outlet, then southwest along the Creek for a distance of 3/10 mile, as shown on Exhibit J.
8. In the Fish Creek area, within 1/4 mile of Fish Creek from 1/4 mile east of the confluence of the north and south branches of Fish Creek, then northeast along the Creek to Horse Heaven, as shown on Exhibit K.

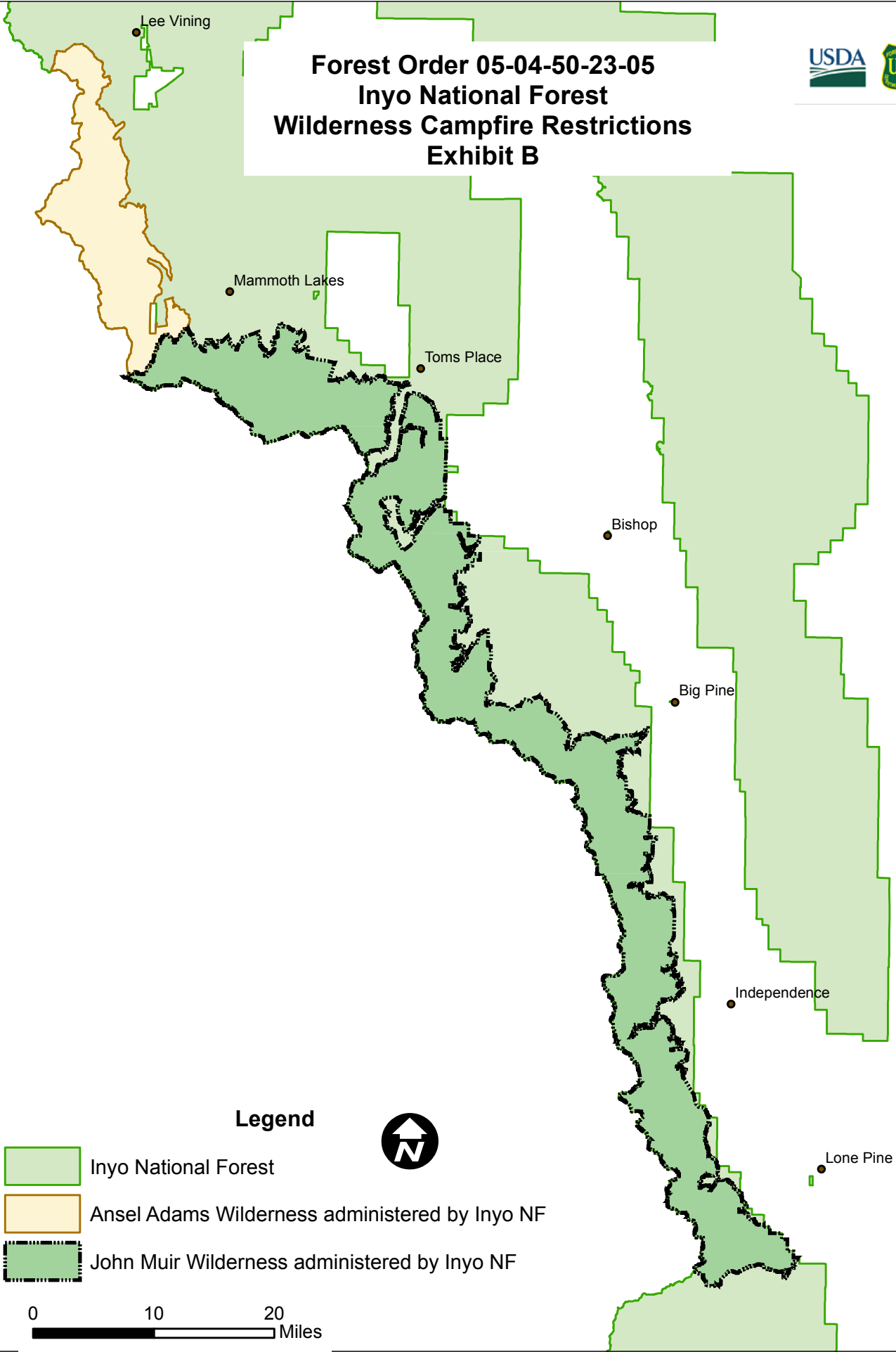
ORDER NO. 05-04-50-23-05  
ANSEL ADAMS AND JOHN MUIR WILDERNESSES  
INYO NATIONAL FOREST  
Exhibit A

9. In the Fish Creek area, within 1/4 mile of the Pacific Crest Trail from its intersection with the Fish Creek Trail, then south along the Pacific Crest Trail for a distance of 1 mile, as shown on Exhibit K.
10. In the Convict Creek Drainage, within 3/10 mile of Convict Creek from 2/10 mile downstream of the Mildred Lake outlet, then south along the Creek to 1 mile upstream of the Mildred Lake inlet, as shown on Exhibit L.
11. In the McGee Creek Drainage, within 7/10 mile of McGee Creek from its intersection with the John Muir Wilderness boundary, then south along the Creek for a distance of 3½ miles, as shown on Exhibit L.
12. In the Hilton Creek Drainage, within 1 mile of Hilton Creek from its intersection with the John Muir Wilderness boundary, then south along the Creek to the inlet of Second Lake, as shown on Exhibit M.
13. In the Hilton Creek Drainage, within 1/2 mile south of the John Muir Wilderness boundary from its intersection with Hilton Creek, then east along the boundary to its end at Rock Creek, as shown on Exhibit M.
14. In the Hilton Creek Drainage, within 1/2 mile west of the John Muir Wilderness boundary from its intersection with the Hilton Lakes Trail, then north for a distance of 3 miles, as shown on Exhibit M.
15. In the Pine Lake area, within 1/10 mile of Pine Lake, as shown on Exhibit N.
16. In the Pine Lake area, within 1/4 mile of Pine Creek from its intersection with the John Muir Wilderness boundary, then west along the Creek to the Pine Lake outlet, as shown on Exhibit N.
17. In the Lower Horton Lake area, within 1/2 mile of Lower Horton Lake, as shown on Exhibit N.
18. In the North Fork Big Pine Creek Drainage, within 4/10 mile of First Lake, as shown on Exhibit O.
19. In the North Fork Big Pine Creek Drainage, within 3/10 mile of Second Lake, as shown on Exhibit O.




ORDER NO. 05-04-50-23-05  
ANSEL ADAMS AND JOHN MUIR WILDERNESSES  
INYO NATIONAL FOREST  
Exhibit A

20. In the North Fork Big Pine Creek Drainage, within 3/10 mile of Third Lake, as shown on Exhibit O.
21. In the South Fork Big Pine Creek Drainage, within 4/10 mile of South Fork Big Pine Creek from its intersection with the John Muir Wilderness boundary, then south along the Creek to Brainerd Lake, as shown on Exhibit O.
22. In the Taboose Creek Drainage, within 1/2 mile of the Taboose Pass Trail from 1½ miles west of its intersection with the John Muir Wilderness boundary, then west along the Trail for a distance of 4½ miles, as shown on Exhibit P.
23. In the Onion Valley area, within 1/2 mile of the Kearsarge Pass Trail, from its intersection with the John Muir Wilderness boundary, then west along the Trail for a distance of 1/2 mile, as shown on Exhibit Q.
24. In the Onion Valley area, within 1/2 mile of the Golden Trout Lake Trail, from its intersection with the John Muir Wilderness boundary, then northwest along the Trail for a distance of 1/2 mile, as shown on Exhibit Q.
25. In the Onion Valley area, within 1/2 mile of the Robinson Lake Trail from its intersection with the John Muir Wilderness boundary, then south along the Trail for a distance of 8/10 mile, as shown on Exhibit Q.
26. In the Anvil Camp area, within 1000 feet of the junction of the Shepherd Pass Trail and Shepherd Creek, as shown on Exhibit R.
27. In the North Fork Lone Pine Creek Drainage, within 1/4 mile of North Fork Lone Pine Creek, from its intersection with the John Muir Wilderness boundary, then west along the Creek to Lower Boy Scout Lake, as shown on Exhibit S.
28. In the Lone Pine Creek Drainage, within 1/2 mile of Lone Pine Creek, from its intersection with the John Muir Wilderness boundary, then southwest to Bighorn Park, as shown on Exhibit S.
29. In the Meysan Creek Drainage, within the area 1/2 mile of Meysan Creek, from its intersection with the John Muir Wilderness boundary, then southwest along the Creek to Little Meysan Lake, as shown on Exhibit S.

**Forest Order 05-04-50-23-05  
Inyo National Forest  
Wilderness Campfire Restrictions  
Exhibit B**



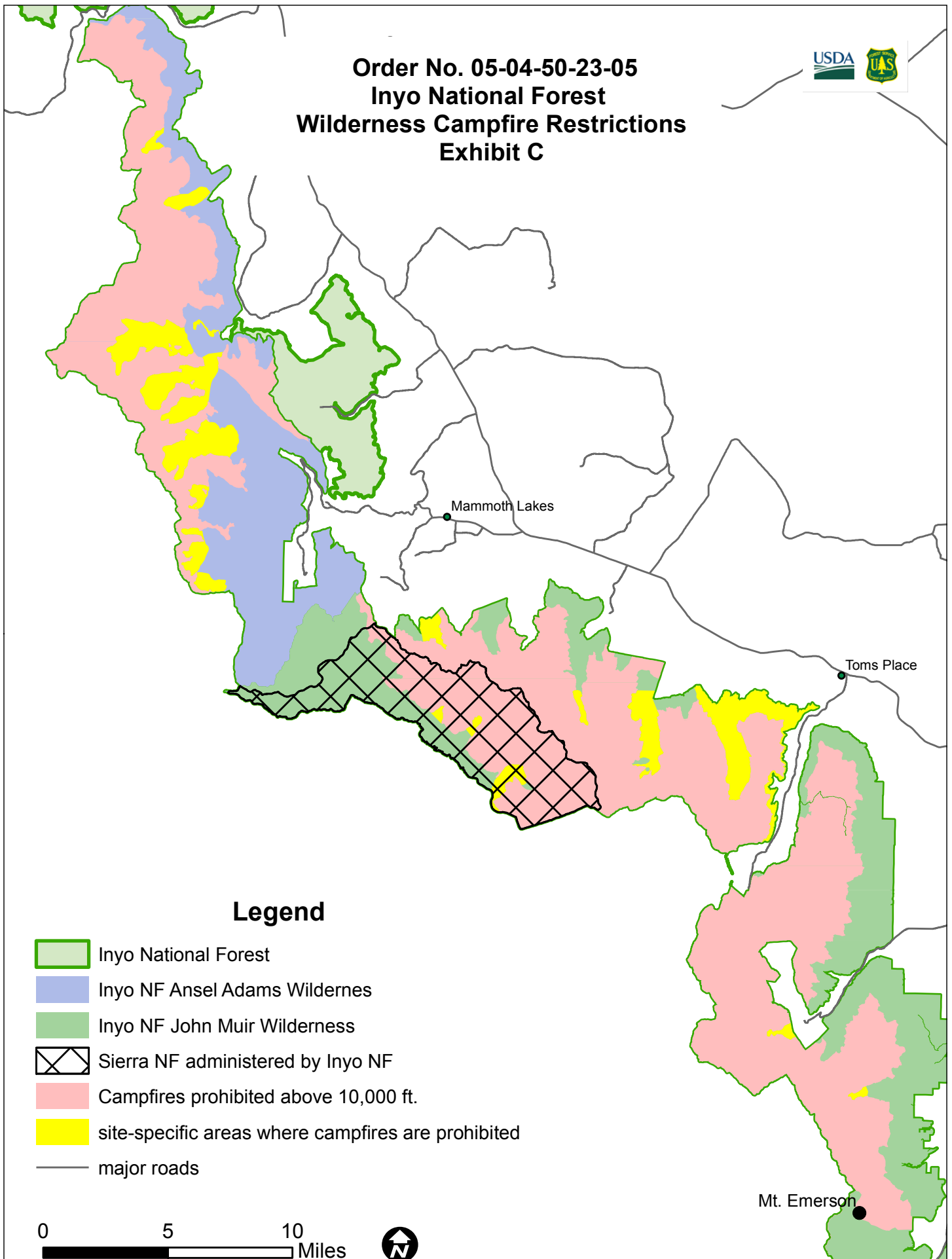
**Legend**

-  Inyo National Forest
-  Ansel Adams Wilderness administered by Inyo NF
-  John Muir Wilderness administered by Inyo NF



0 10 20  
Miles

Order No. 05-04-50-23-05  
Inyo National Forest  
Wilderness Campfire Restrictions  
Exhibit C



**Legend**

- Inyo National Forest
- Inyo NF Ansel Adams Wilderness
- Inyo NF John Muir Wilderness
- Sierra NF administered by Inyo NF
- Campfires prohibited above 10,000 ft.
- site-specific areas where campfires are prohibited
- major roads





Piute Pass ● Mt. Emerson



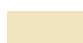



Big Pine

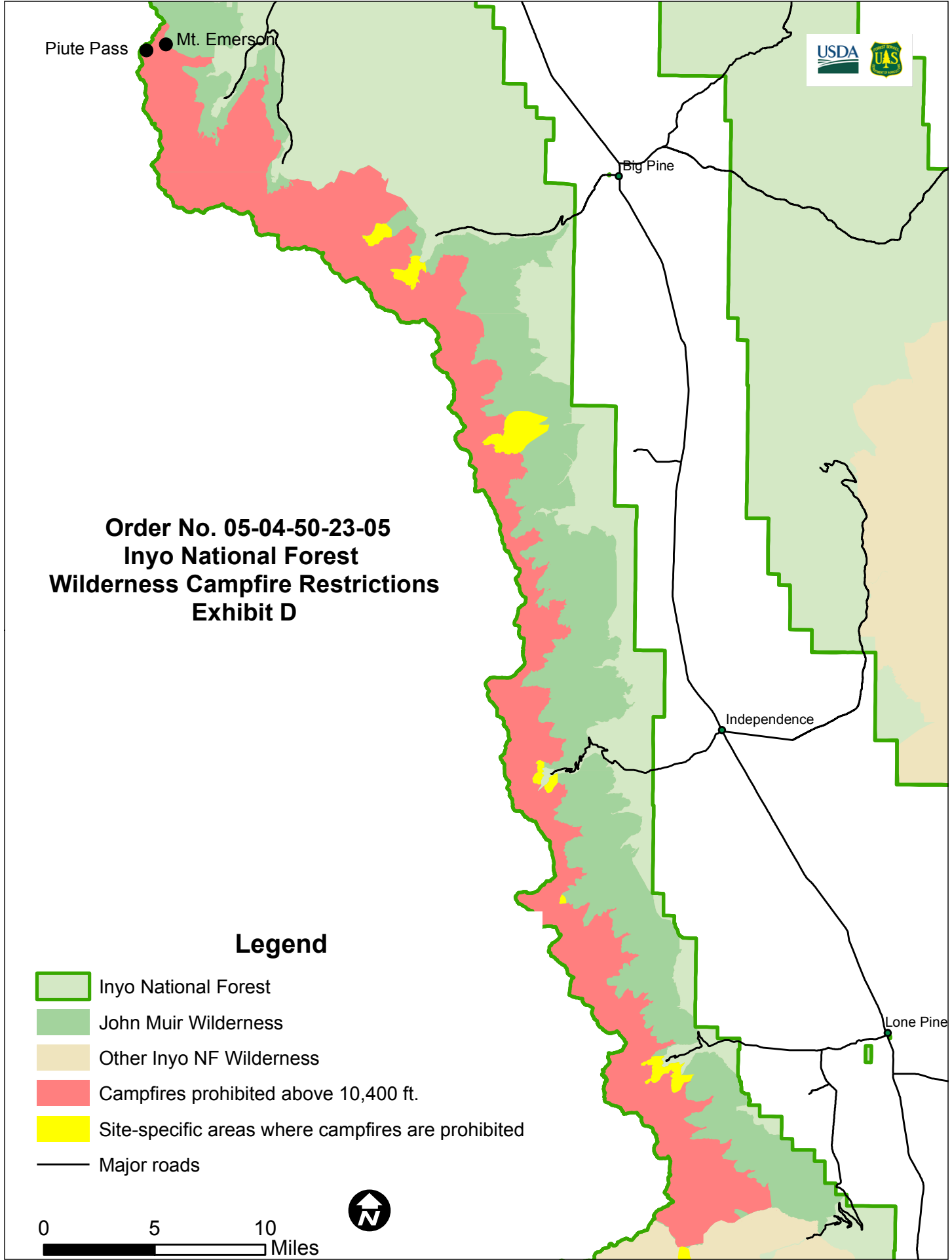
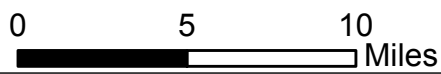
Independence

Lone Pine

### Order No. 05-04-50-23-05 Inyo National Forest Wilderness Campfire Restrictions Exhibit D

#### Legend

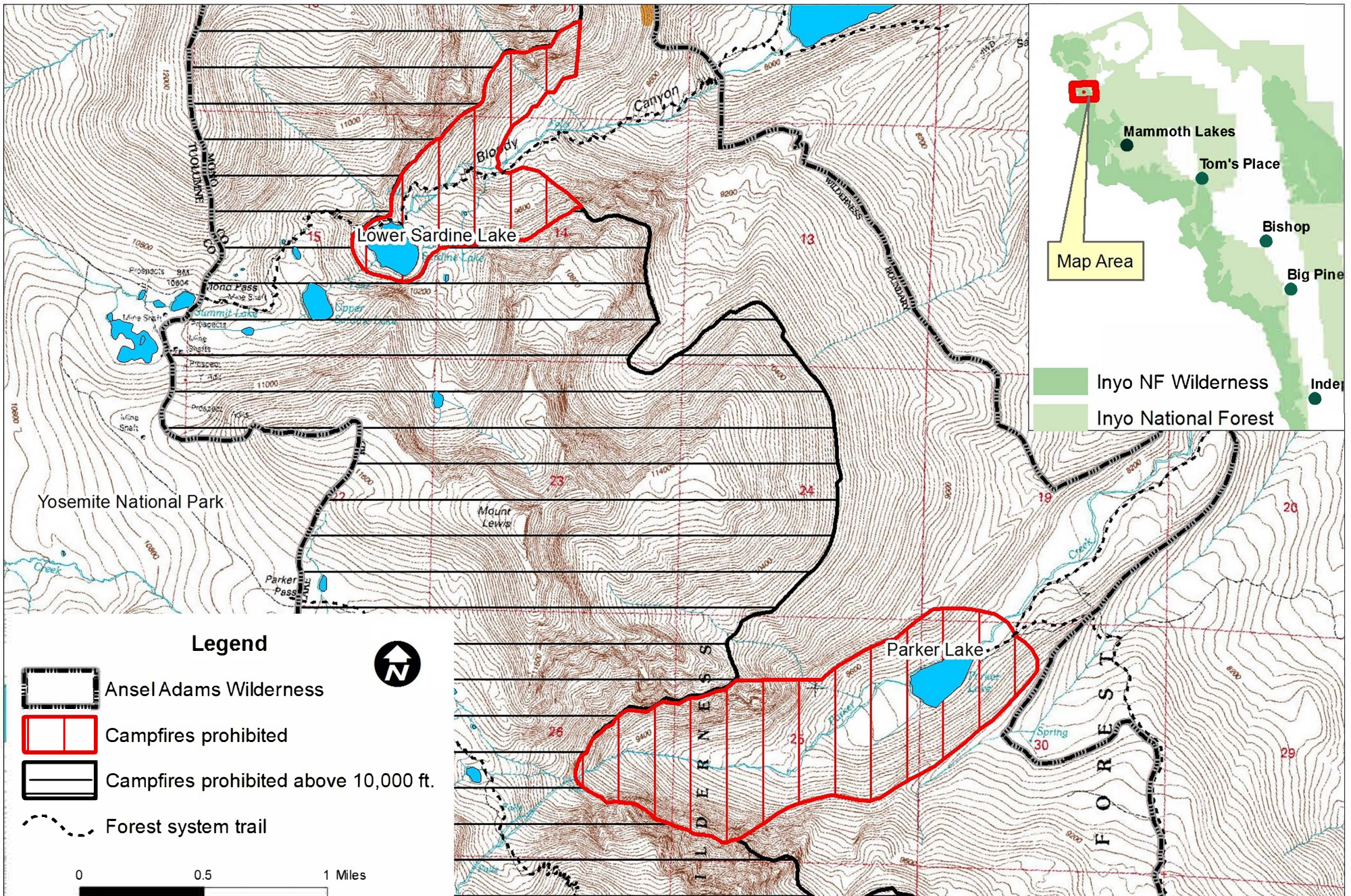
-  Inyo National Forest
-  John Muir Wilderness
-  Other Inyo NF Wilderness
-  Campfires prohibited above 10,400 ft.
-  Site-specific areas where campfires are prohibited
-  Major roads





Order No.05-04-50-23-05  
 Inyo National Forest  
 Wilderness Campfire Restrictions  
 Exhibit E

Bloody Canyon &  
 Parker Canyon Drainages

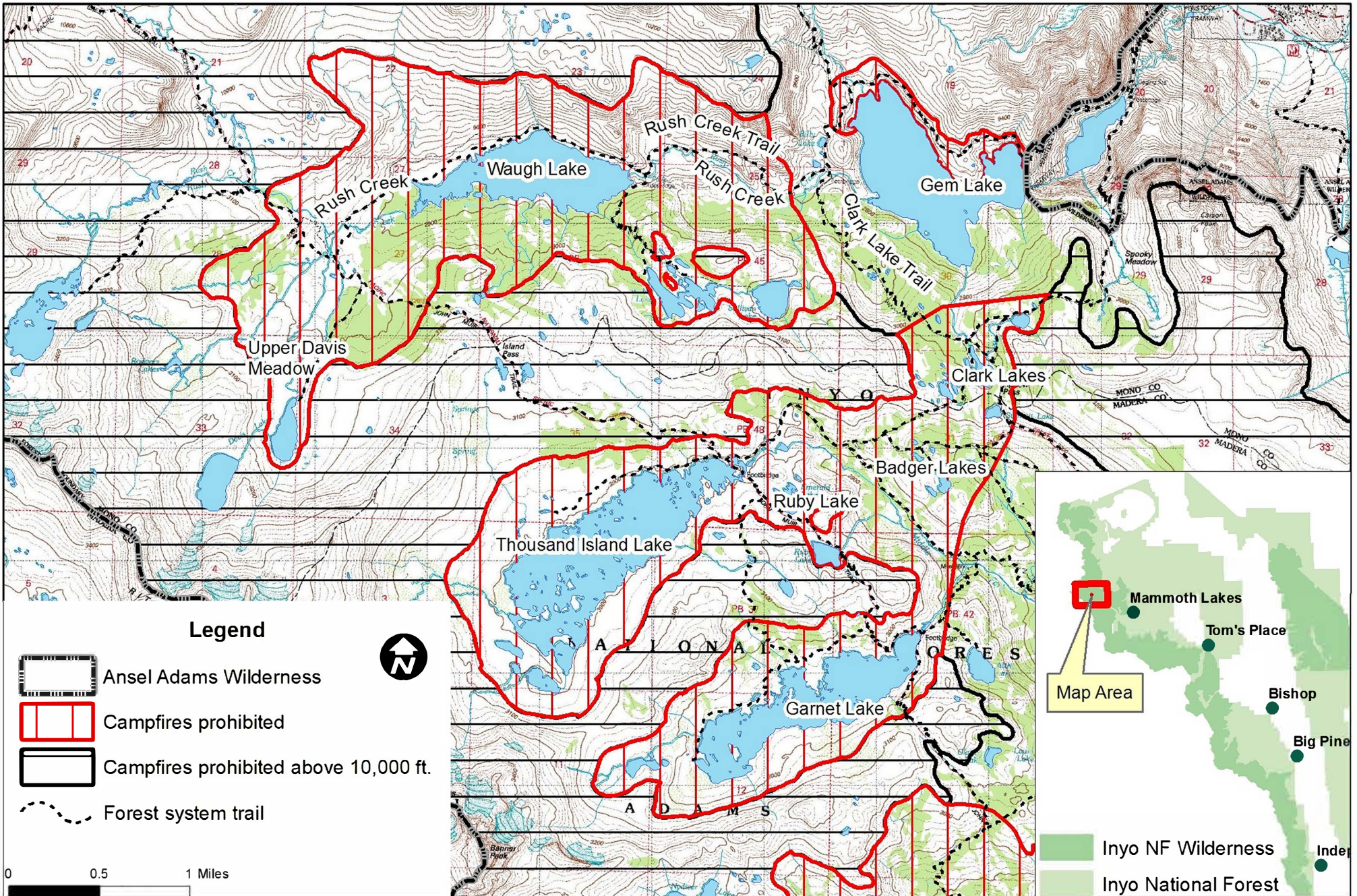






Order No. 05-04-50-23-05  
 Inyo National Forest  
 Wilderness Campfire Restrictions  
 Exhibit F

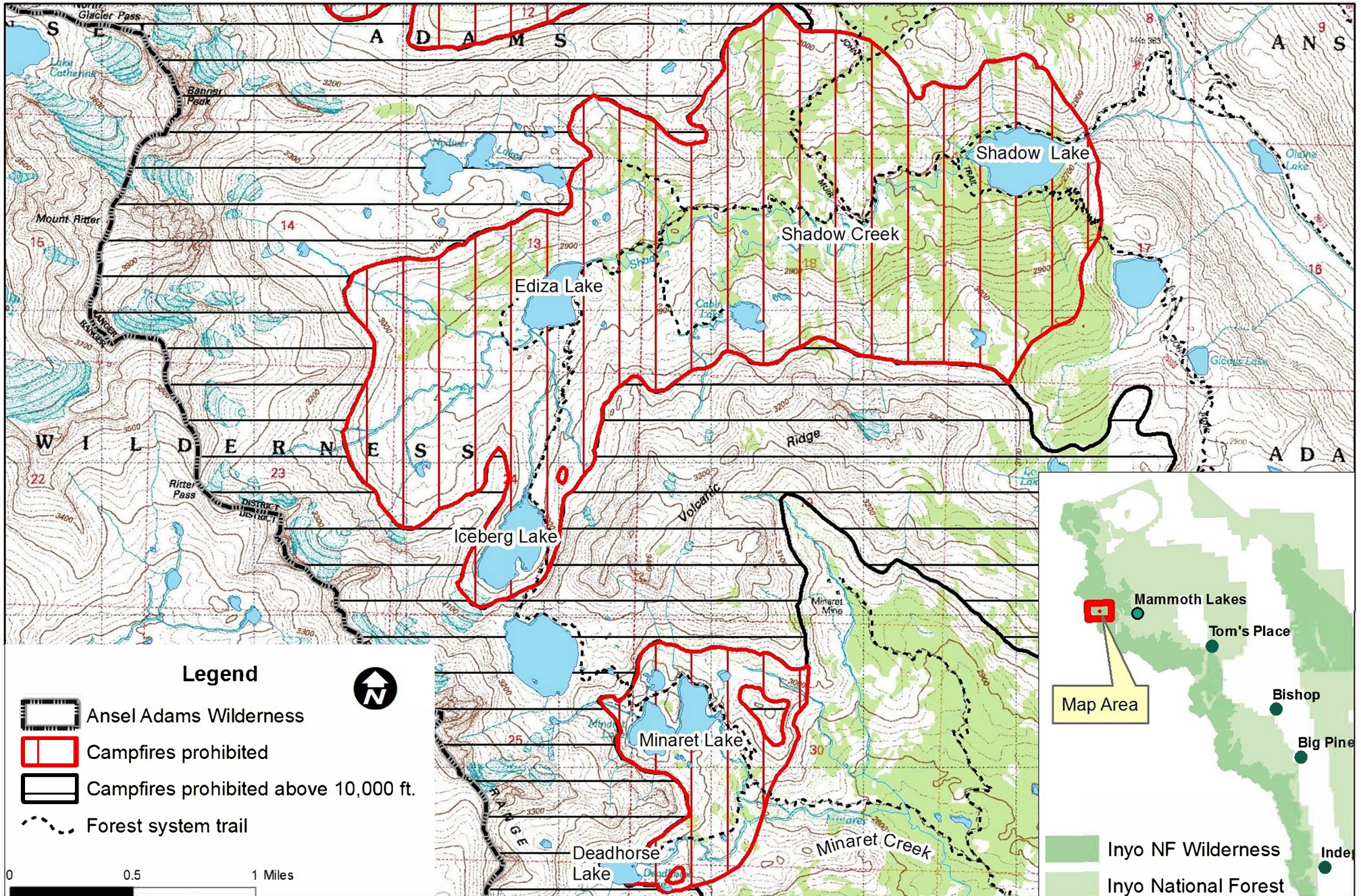
Rush Creek, Thousand Island  
 Lake & Garnet Lake areas





Order No. 05-04-50-23-05  
 Inyo National Forest  
 Wilderness Campfire Restrictions  
 Exhibit G

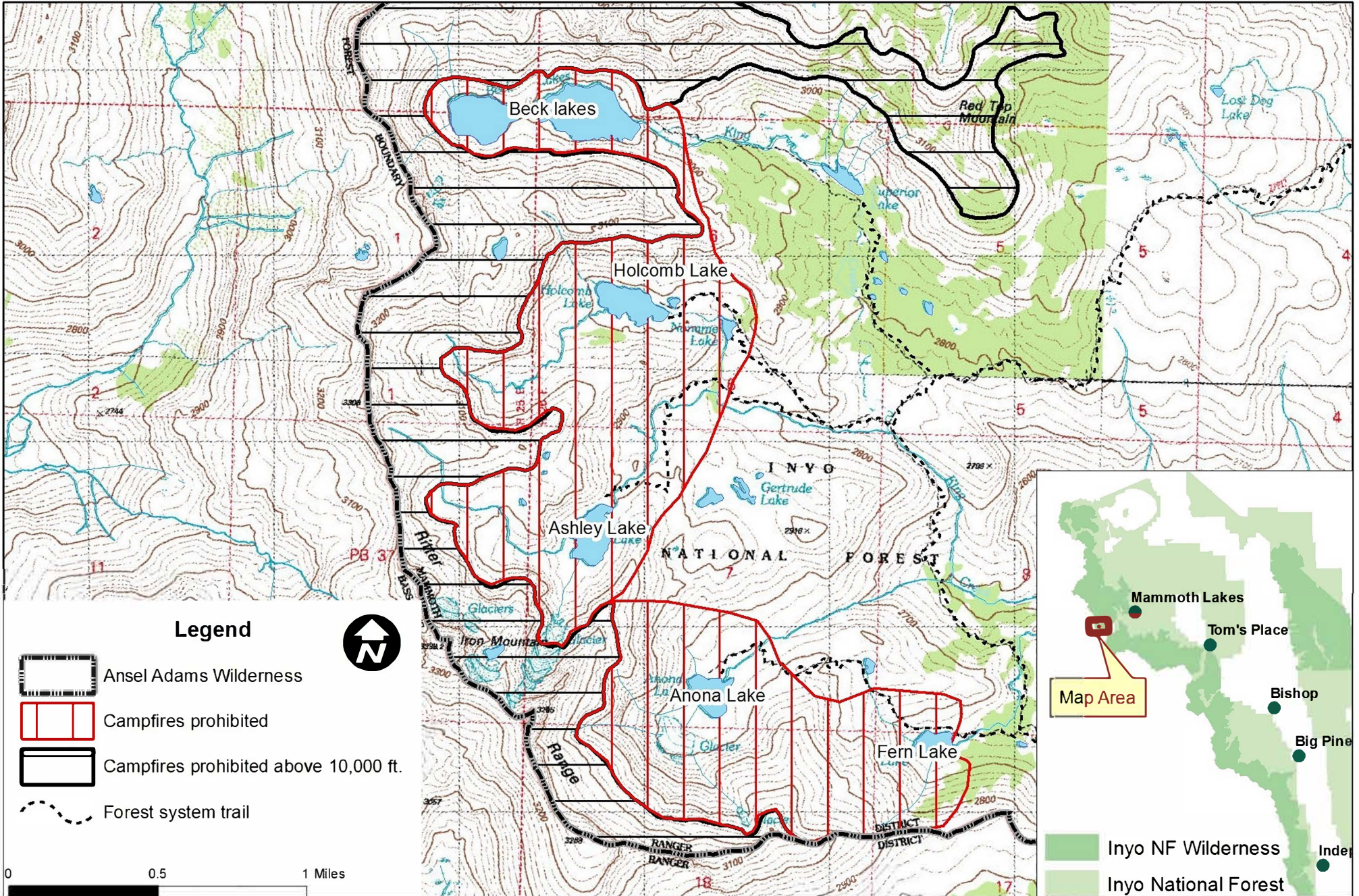
Shadow Creek Drainage &  
 Minaret Lake areas





# Order No. 05-04-50-23-05 Inyo National Forest Wilderness Campfire Restrictions Exhibit H

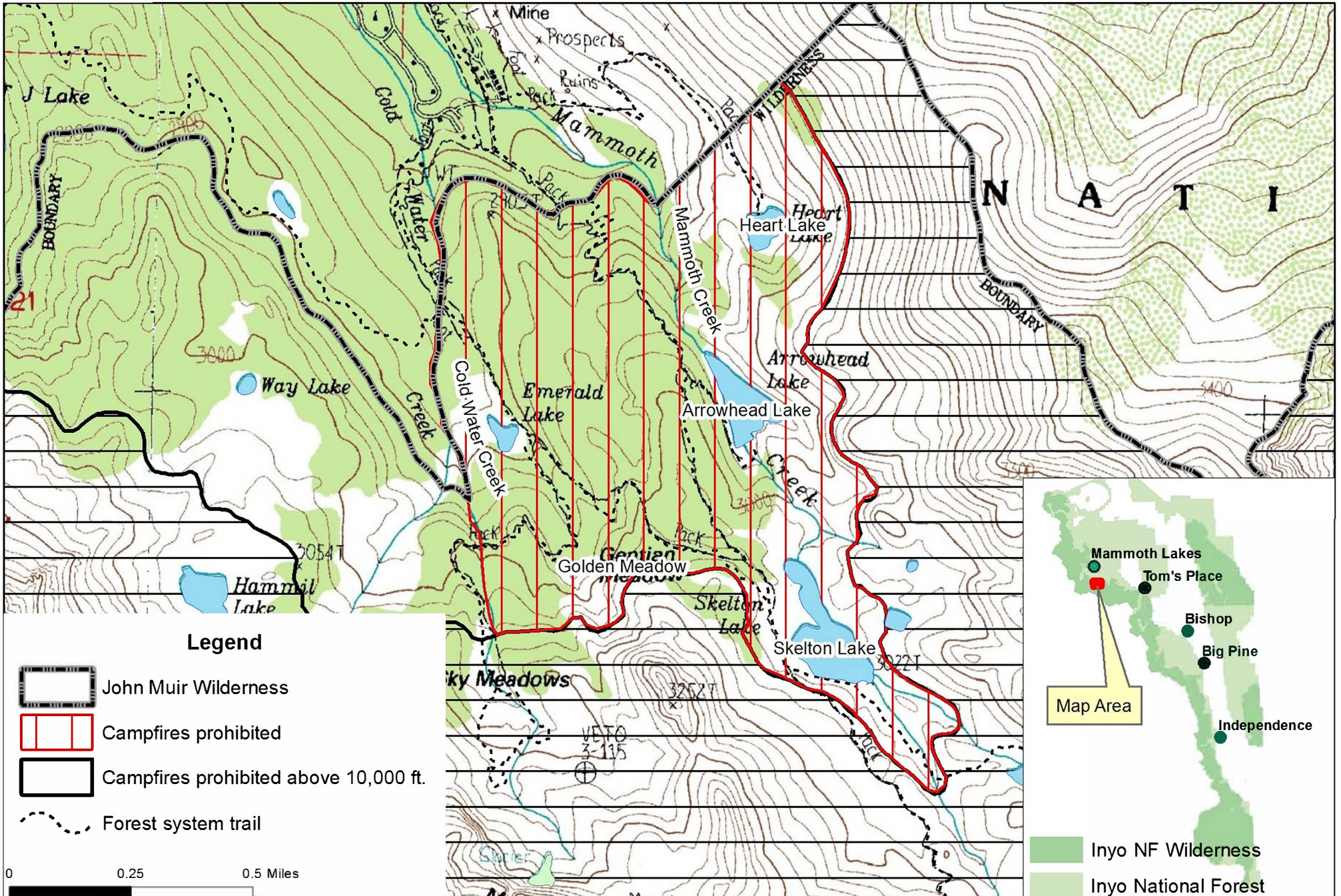
## King Creek Drainage



Order No. 05-04-50-23-05  
 Inyo National Forest  
 Wilderness Campfire Restrictions  
 Exhibit I

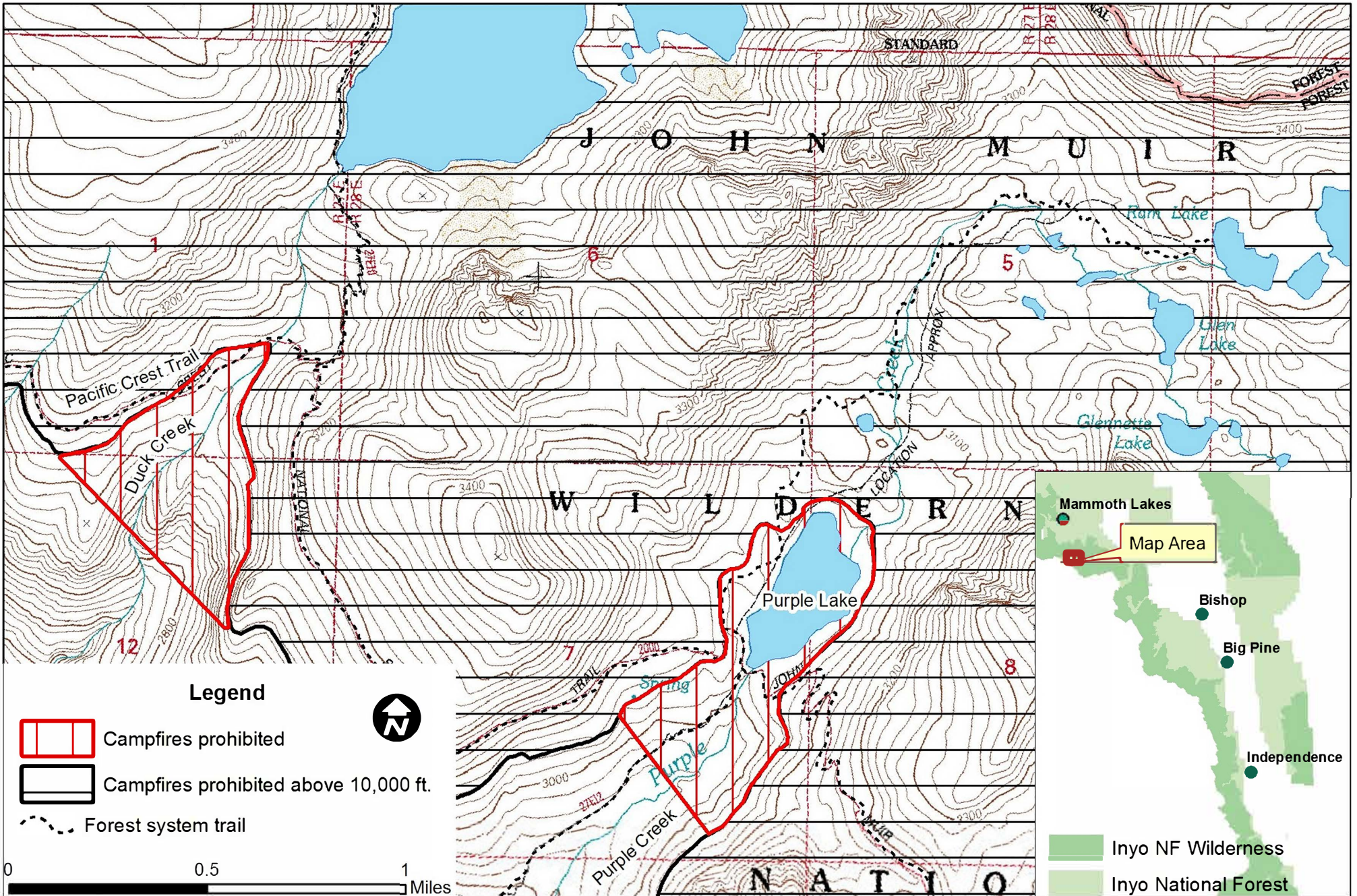


Cold Water Drainage



Order No.05-04-50-23-05  
Inyo National Forest  
Wilderness Campfire Restrictions  
Exhibit J

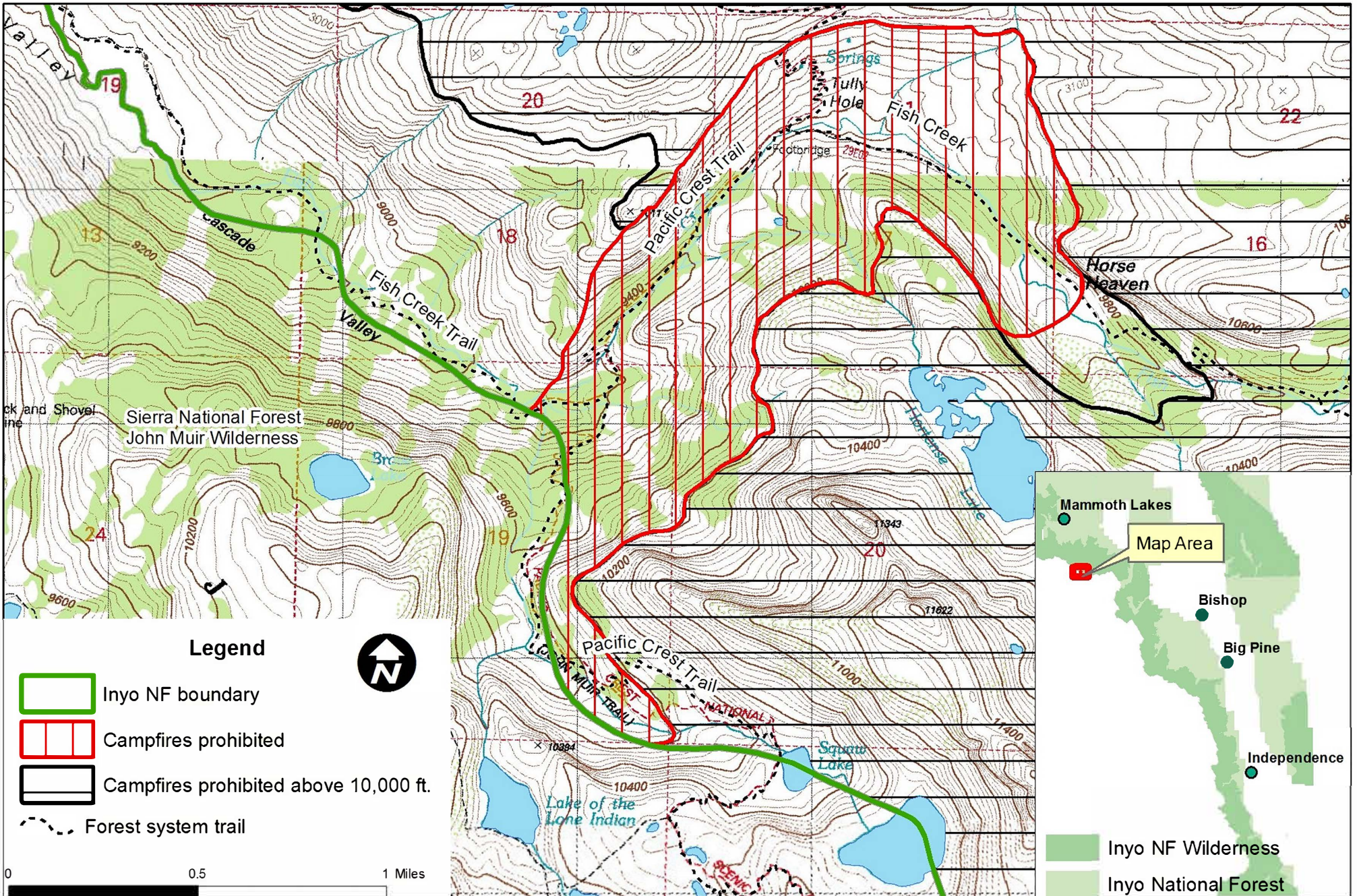
Duck Creek &  
Purple Lake areas





Order No. 05-04-50-23-05  
 Inyo National Forest  
 Wilderness Campfire Restrictions  
 Exhibit K

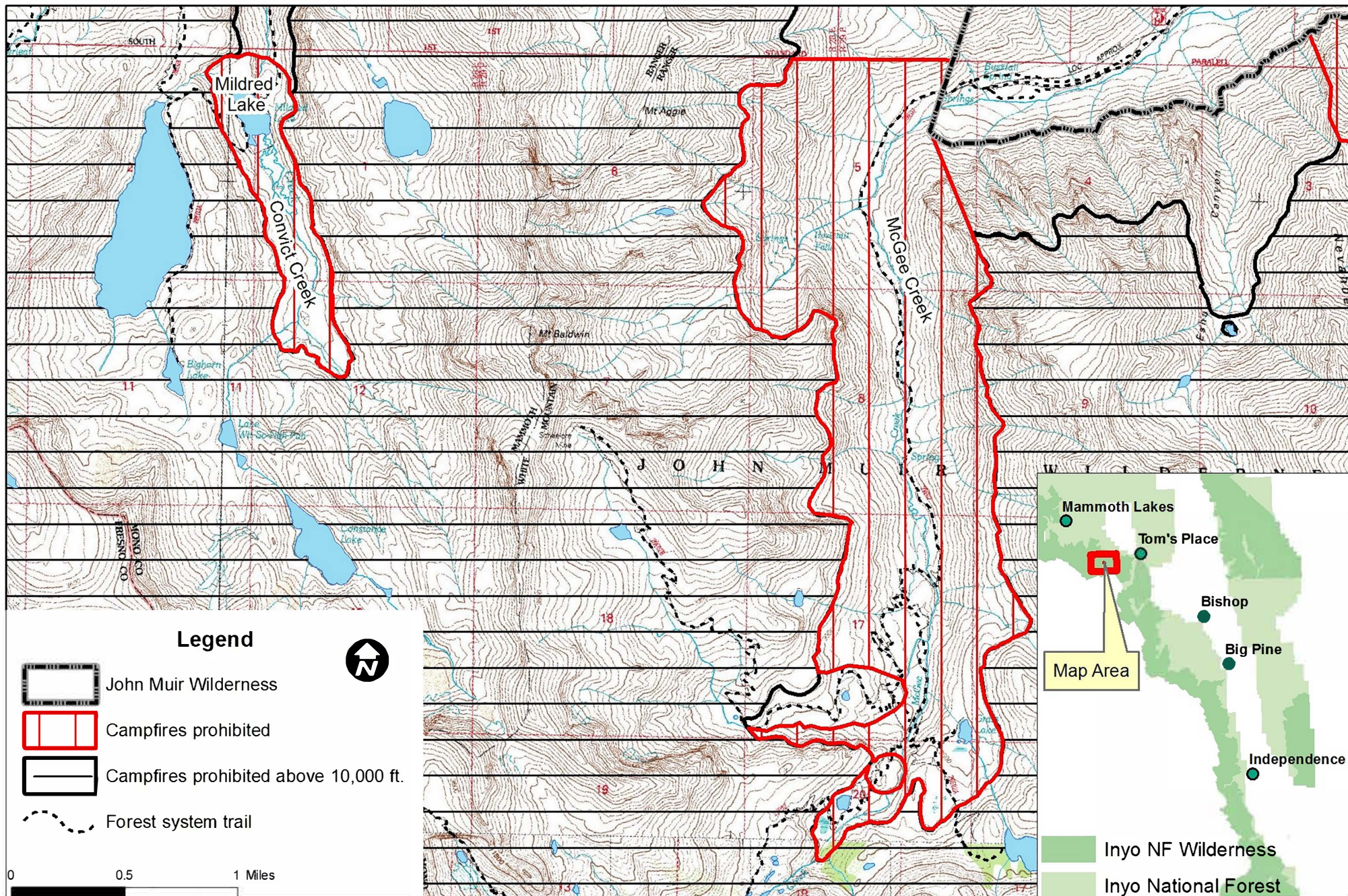
Upper Fish Creek Drainage



Order No.05-04-50-23-05  
 Inyo National Forest  
 Wilderness Campfire Restrictions  
 Exhibit L



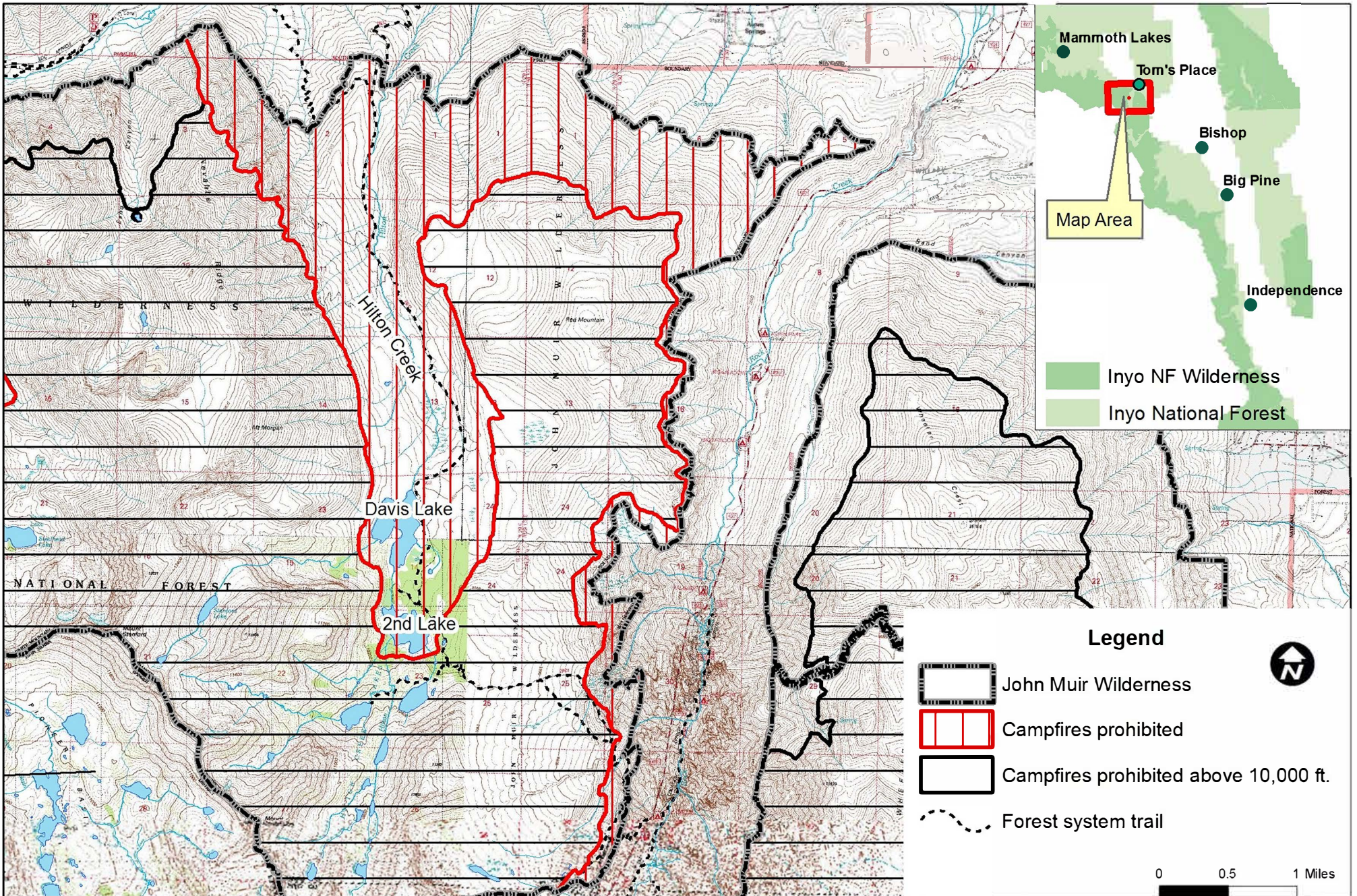
Convict Creek &  
 McGee Creek Drainages





Order No. 05-04-50-23-05  
Inyo National Forest  
Wilderness Campfire Restrictions  
Exhibit M

Hilton Creek Drainage

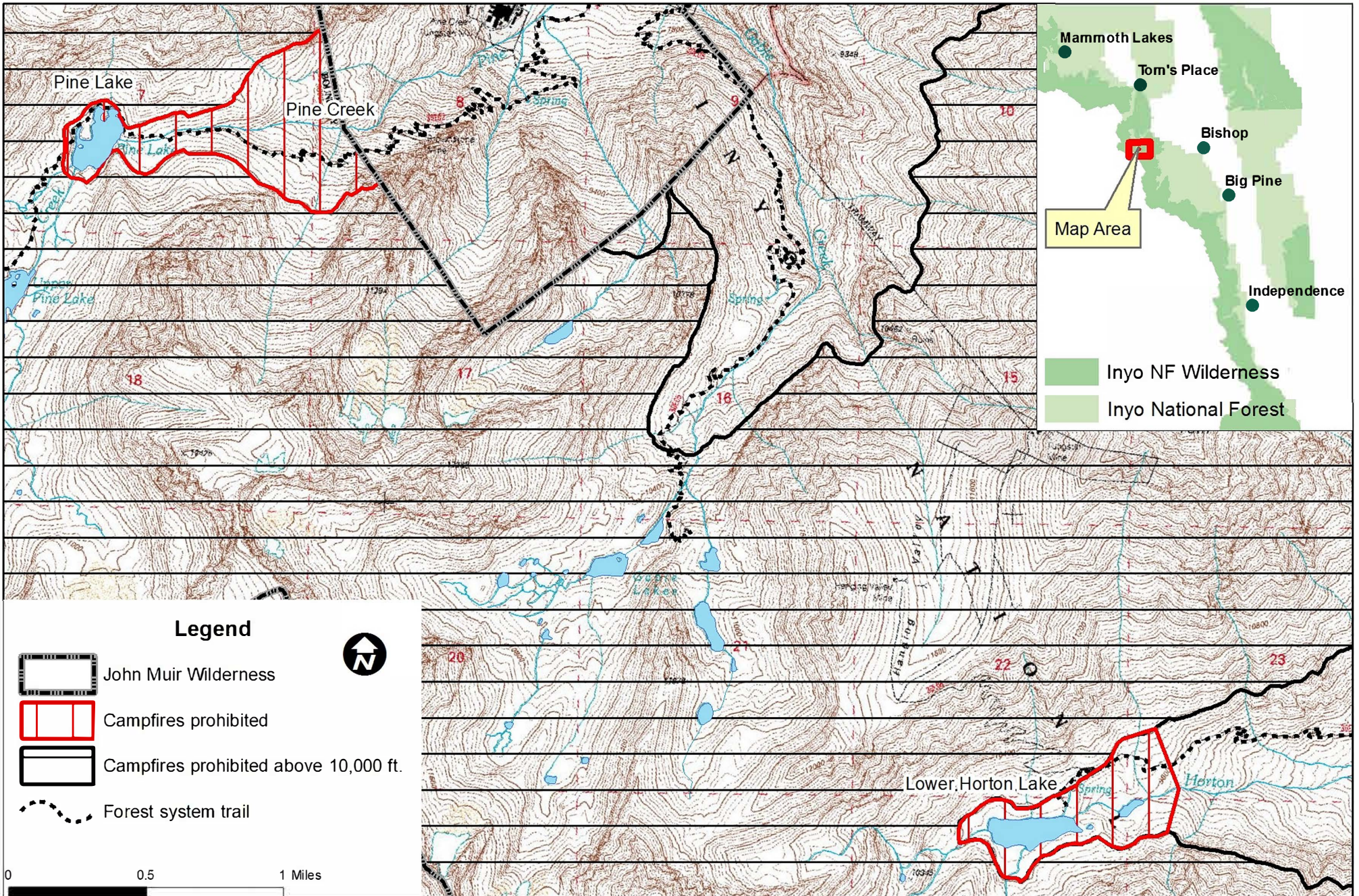




Order No.05-04-50-23-05  
 Inyo National Forest  
 Wilderness Campfire Restrictions  
 Exhibit N



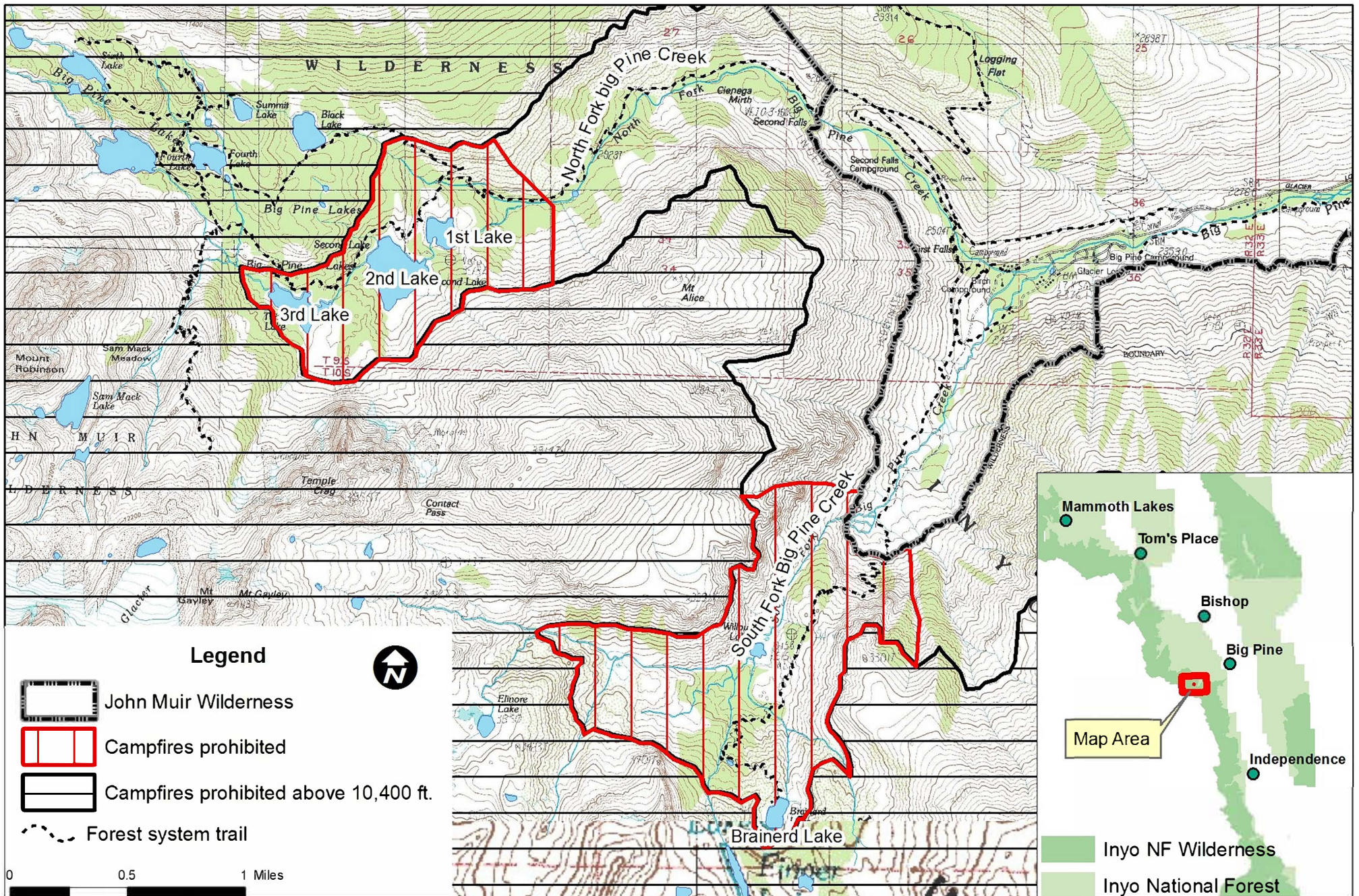
Pine Lake &  
 Lower Horton Lake areas



Order No. 05-04-50-23-05  
 Inyo National Forest  
 Wilderness Campfire Restrictions  
 Exhibit O



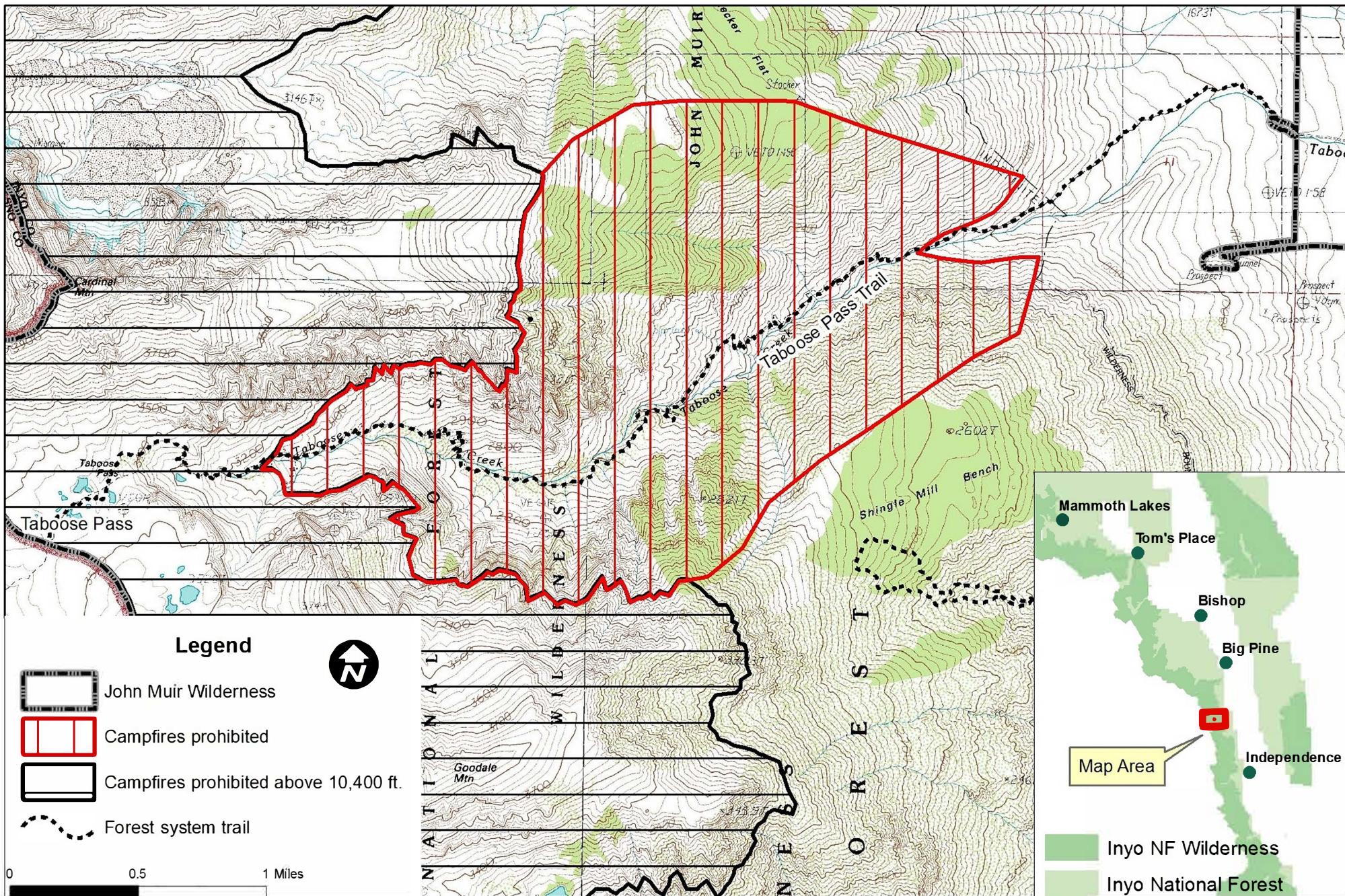
North & South Fork  
 Big Pine Creek Drainage



Order No. 05-04-50-23-05  
Inyo National Forest  
Wilderness Campfire Restrictions  
Exhibit P



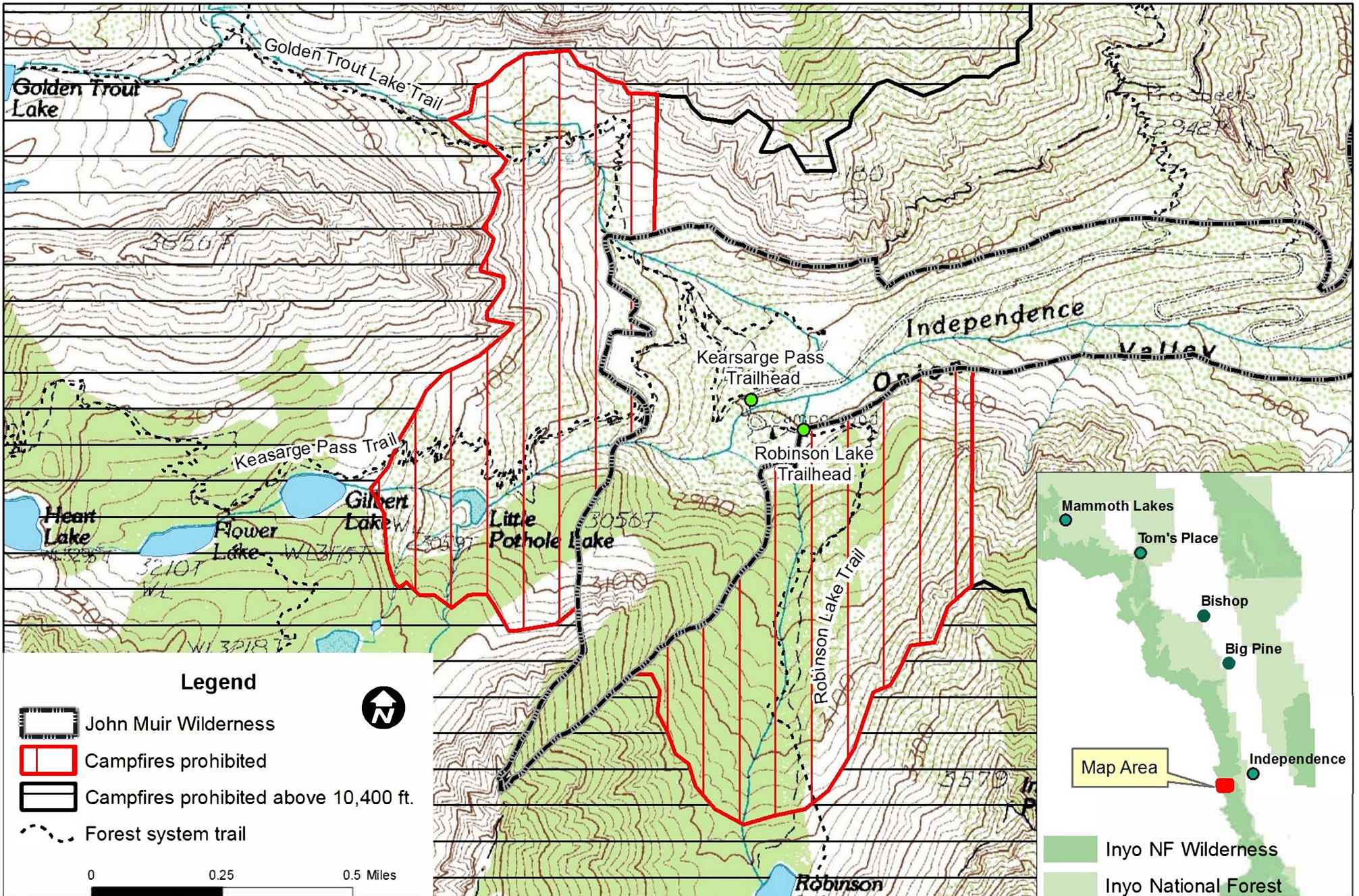
Taboose Creek Drainage



Order No. 05-04-50-23-05  
Inyo National Forest  
Wilderness Campfire Restrictions  
Exhibit Q



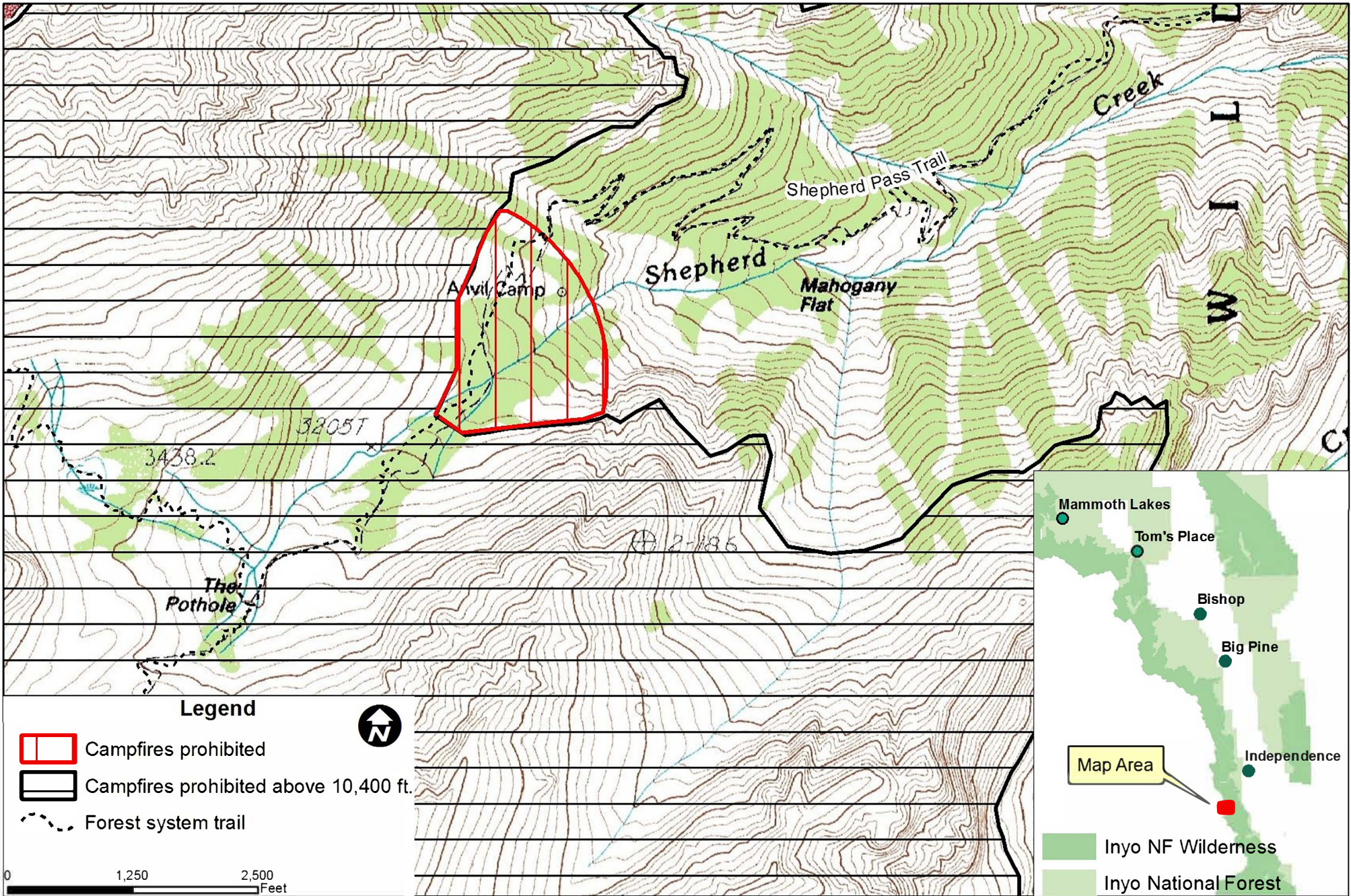
Onion Valley Area



Order No.05-04-50-23-05  
Inyo National Forest  
Wilderness Campfire Restrictions  
Exhibit R



Anvil Camp Area





Order No.05-04-50-23-05  
 Inyo National Forest  
 Wilderness Campfire Restrictions  
 Exhibit S

North Fork Lone Pine Creek,  
 Lone Pine Creek &  
 Meysan Creek Drainages

