

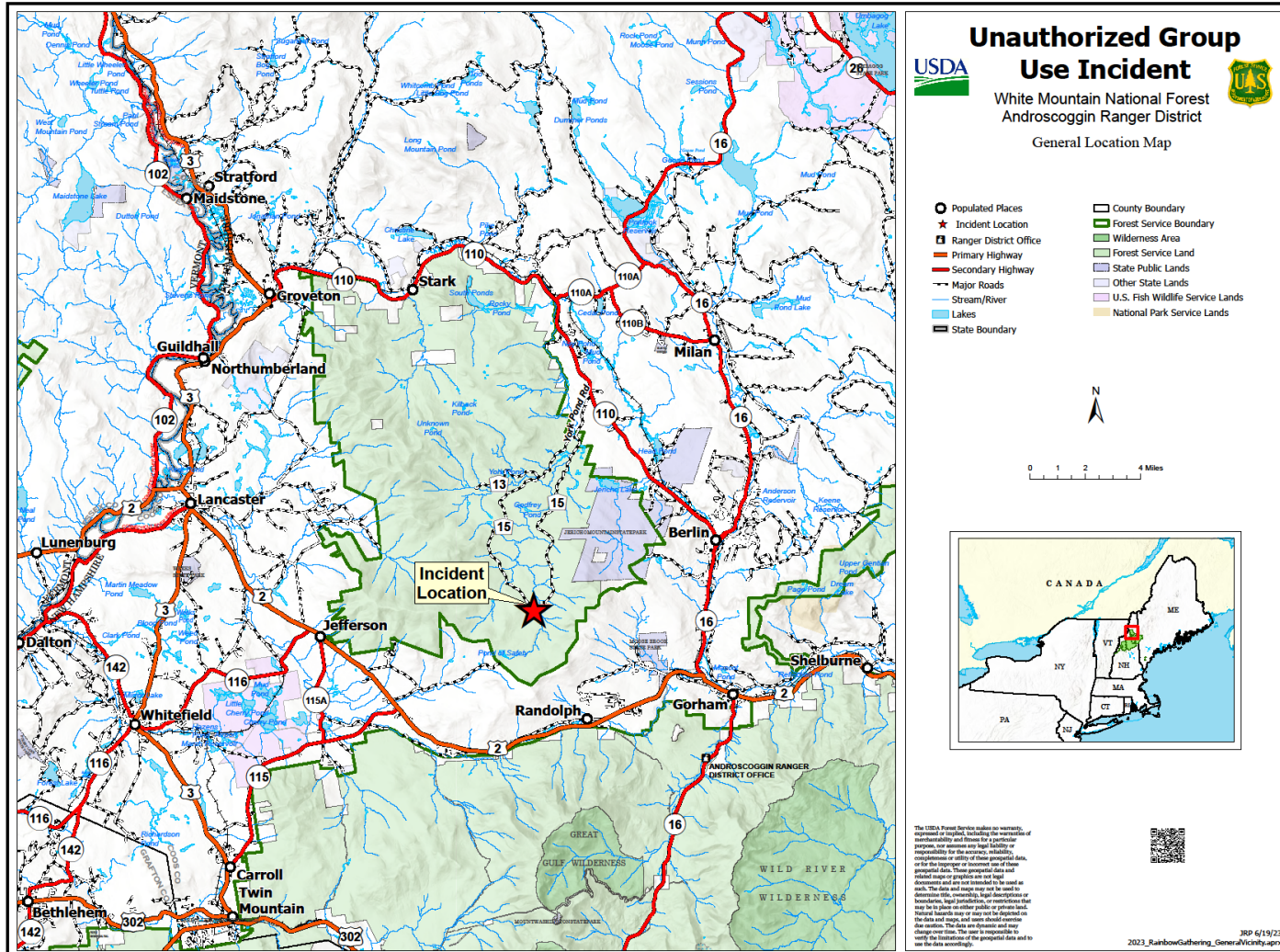
Unauthorized Group Use Incident on the White Mountain National Forest



Forest Service

White Mountain National Forest

Incident Location





United States Department of Agriculture

Closure Orders:

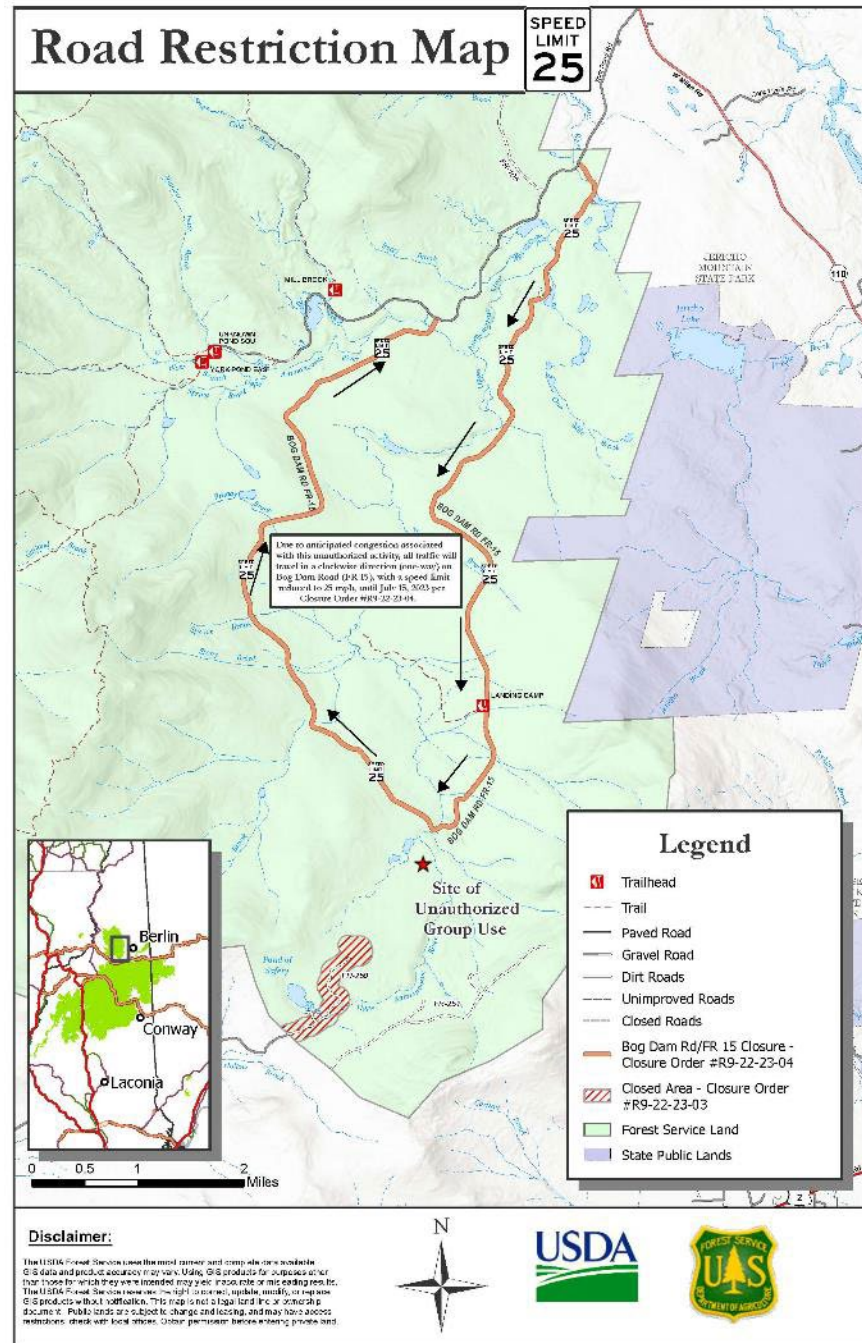
#R9-22-23-02 – Bog Dam Road/FR 15 One-Way Traffic, 25 mph Speed Limit

#R9-22-23-03 – Pond of Safety Area Closure



Forest Service

White Mountain National Forest





Forest Service

White Mountain National Forest



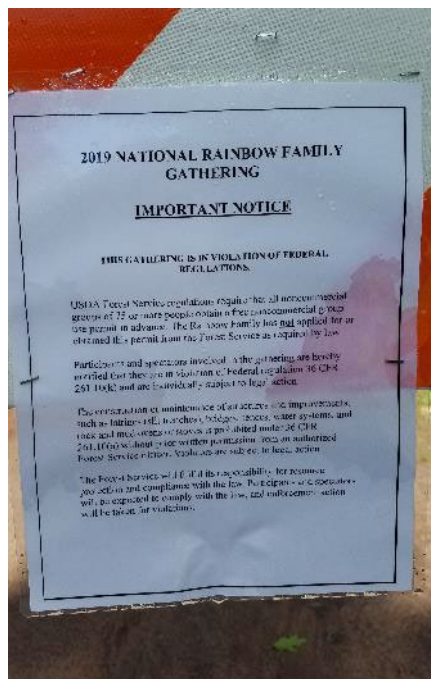
United States Department of Agriculture



Forest Service

White Mountain National Forest

Trail Head



Forest Service

White Mountain National Forest



Forest Service

White Mountain National Forest



Main Meadow



Forest Service

White Mountain National Forest

Kitchen and Ovens

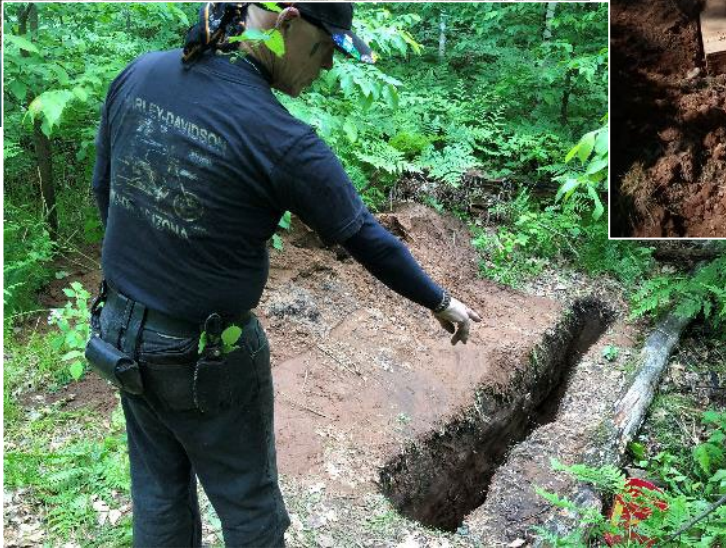




Forest Service

White Mountain National Forest

Latrines

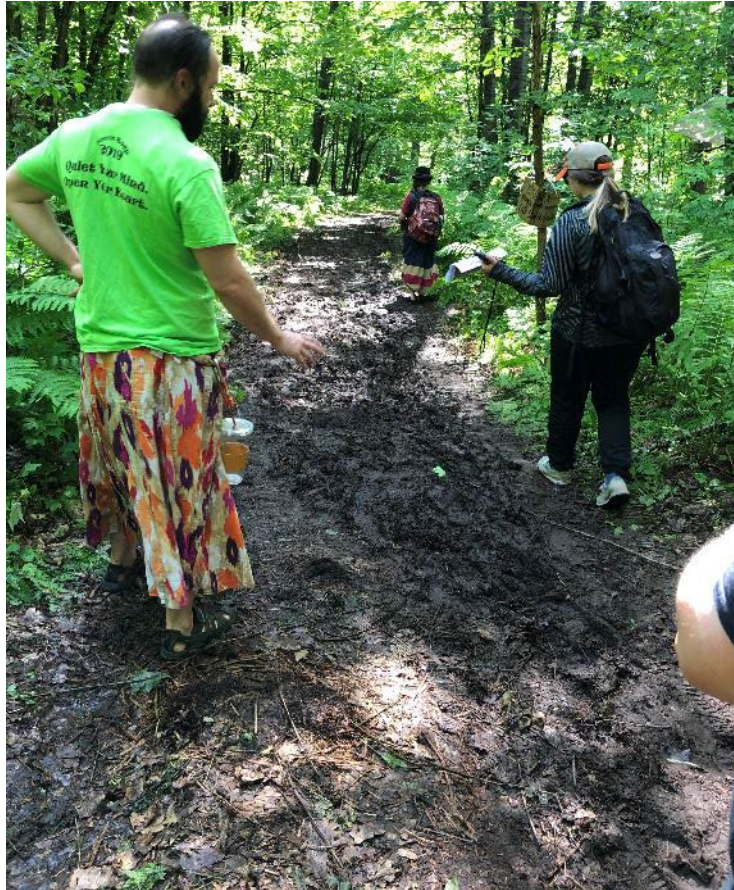


Compost Pits



Forest Service

White Mountain National Forest



Forest Service

White Mountain National Forest

Rehabilitation



Forest Service

White Mountain National Forest

During Incident



Forest Service

White Mountain National Forest



Rehabilitated Site



During Incident



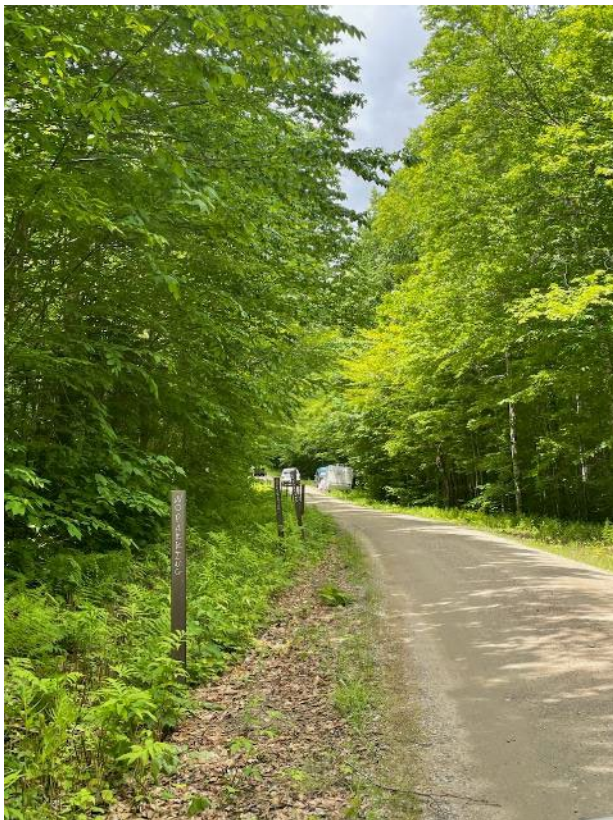
Rehabilitated Site



Forest Service

White Mountain National Forest

Current Incident



Forest Service

White Mountain National Forest



United States Department of Agriculture

Main Meadow



Forest Service

White Mountain National Forest



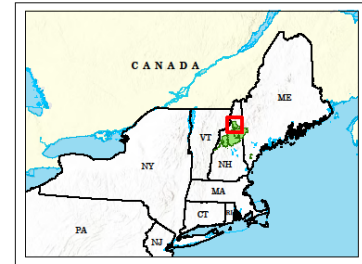
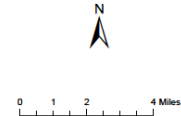
Unauthorized Group Use Incident

White Mountain National Forest
Androscoggin Ranger District

General Location Map

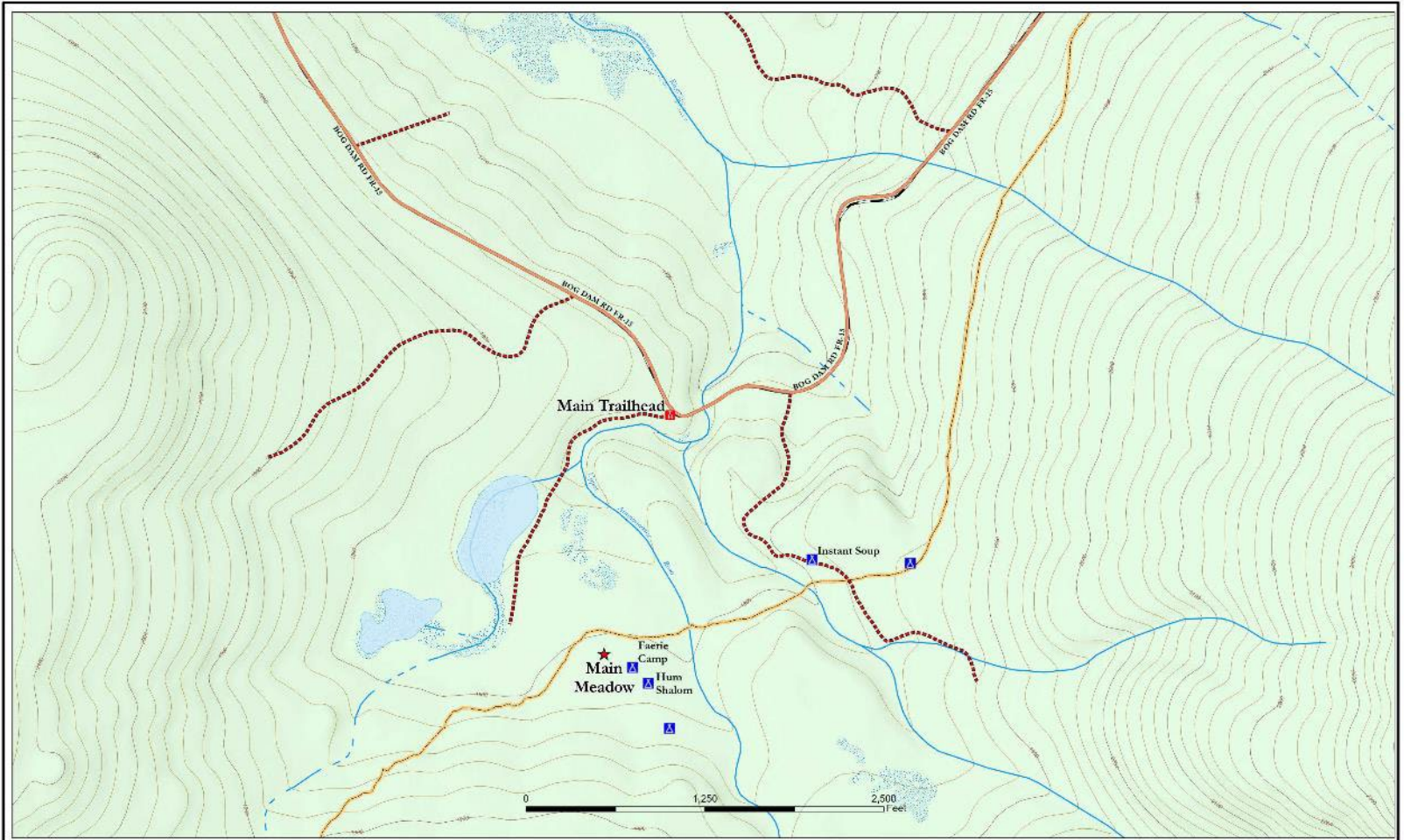


- Populated Places
- Incident Location
- Ranger District Office
- Primary Highway
- Secondary Highway
- Major Roads
- Stream/River
- Lakes
- State Boundary
- County Boundary
- Forest Service Boundary
- Wilderness Area
- Forest Service Land
- State Public Lands
- Other State Lands
- U.S. Fish Wildlife Service Lands
- National Park Service Lands



The USDA Forest Service makes no warranty, expressed or implied, including the accuracy, reliability, or completeness of these geospatial data, or for the integrity or invariant use of these geospatial data. These geospatial data and related maps or graphics are not legal documents and are not intended to be used as such. The data and maps may not be used to determine title, ownership, land descriptions or boundaries, legal jurisdiction, or restrictions that may be in place on either public or private land. Natural hazards may or may not be depicted on the data and maps, and users should exercise due caution. The data are dynamic and may change over time. The user is responsible to verify the information of the geospatial data and to use the data accordingly.





Legend

- ★ Main Meadow
- Trailhead
- NI Water body
- Bog Dam Rd (FR 15)
- Closure - Circum Order #R9-22-23-02
- Major Roads
- Closed Roads
- Snowmobile Trail
- Camp



Unauthorized Group Use Incident

White Mountain National Forest
Androskoggin Ranger District

June 22, 2023



The USDA Forest Service is an agency of the United States Department of Agriculture. It is responsible for the conservation, management, and use of the Nation's forest and rangeland resources. The Forest Service is committed to providing a wide range of products and services to the American people, including timber, recreation, and wildlife. The Forest Service is also committed to protecting the environment and promoting sustainable forest management. The Forest Service is a part of the United States Department of Agriculture and is located in Washington, D.C.





Contact Us

- Public Information:
 - Phone – 814-230-6609
 - Email - SM.FS.RainbowIMT@usda.gov
- Website -
<https://www.fs.usda.gov/goto/rainbowgathering>



Forest Service

White Mountain National Forest



United States Department of Agriculture

Questions



Forest Service

White Mountain National Forest



United States Department of Agriculture

The U.S. Department of Agriculture (USDA) prohibits discrimination in all its programs and activities on the basis of race, color, national origin, age, disability, and where applicable, sex, marital status, familial status, parental status, religion, sexual orientation, genetic information, political beliefs, reprisal, or because all or part of an individual's income is derived from any public assistance program. (Not all prohibited bases apply to all programs.) Persons with disabilities who require alternative means for communication of program information (Braille, large print, audiotape, etc.) should contact USDA's TARGET Center at (202) 720-2600 (voice and TDD). To file a complaint of discrimination, write USDA, Director, Office of Civil Rights, 1400 Independence Avenue, S.W., Washington, D.C. 20250-9410, or call (800) 795-3272 (voice) or (202) 720-6382 (TDD). USDA is an equal opportunity provider and employer.



Forest Service

White Mountain National Forest