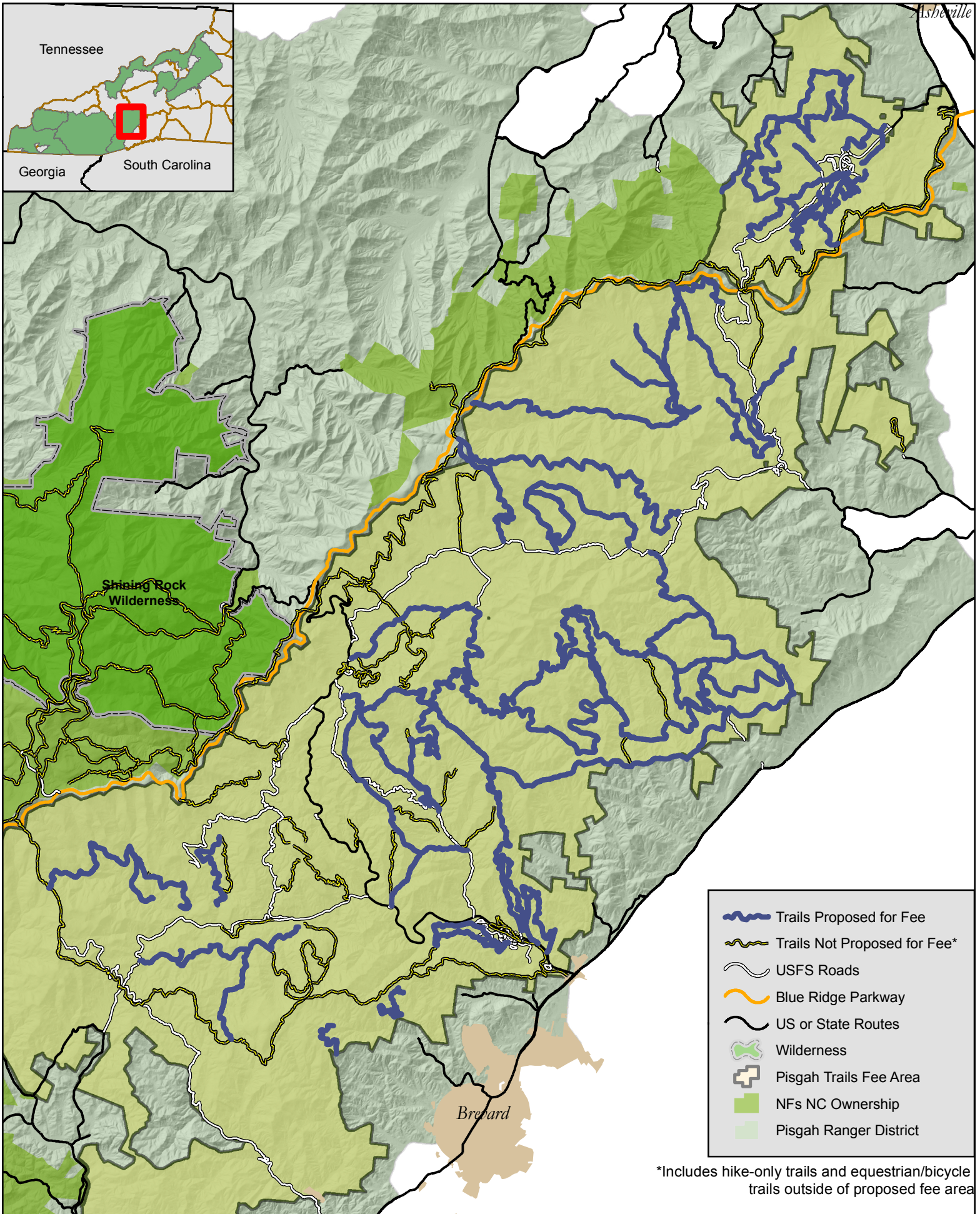
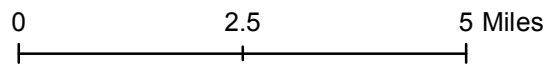


Pisgah Trail Complex Mountain Bike and Equestrian Fee Proposal



*Includes hike-only trails and equestrian/bicycle trails outside of proposed fee area



List of mountain bike and equestrian trails in the Pisgah Trail Complex fee proposal:

- TR102 Big Creek
- TR103 Buckhorn Gap
- TR105 Daniel Ridge
- TR105A Daniel Ridge Connector
- TR106 Farlow Gap
- TR110 Laurel Mountain Connector
- TR115 Riverside
- TR116 Long Branch
- TR118 Pink Beds Loop
- TR118A Pink Beds Connector
- TR120 Cat Gap Loop
- TR121 Laurel Mountain
- TR122 Buckwheat Knob
- TR123 Butter Gap
- TR125 Bracken Mountain
- TR127 Black Mountain
- TR127A Starens Branch
- TR128 Stony Knob
- TR133 South Mills River
- TR135 North Boundary
- TR136 Little Hickory Top
- TR137 Lower Sidehill
- TR137A Sidehill Connector
- TR138 Bennett Gap
- TR139 Greens Lick
- TR143 Sycamore Cove
- TR144 Coontree Loop
- TR145 Sidehill
- TR147 Squirrel Gap
- TR148 Cantrell Creek
- TR150 Ingles Field Gap
- TR150A Ingles Field Connector
- TR320 Slate Rock
- TR320A Pilot Cove
- TR321 Pilot Rock
- TR321A Pilot Rock Extension
- TR322 Turkey Pen Gap
- TR322 Turkey Pen Gap
- TR322 Turkey Pen Gap
- TR324 Vineyard Gap
- TR325 Horse Cove Gap
- TR326 Mullinax
- TR327 Avery Creek
- TR328 Bear Branch
- TR329 Campground Connector
- TR333 Homestead
- TR334 Small Creek
- TR335 Deerfield Loop
- TR335A Deerfield Connector
- TR336 Pinetree Loop
- TR336A Pinetree Connector
- TR337 Explorer Loop
- TR337A Explorer Loop Connector A
- TR337B Explorer Loop Connector B
- TR339 Sleepy Gap
- TR340 Cove Creek
- TR341 Cemetery Loop
- TR343 Club Gap
- TR348 Laurel Creek
- TR350 Fletcher Creek
- TR351 Bradley Creek
- TR352 Middle Fork
- TR353 North Mills River
- TR354 Trace Ridge
- TR359 North Slope Loop
- TR361 Caney Bottom
- TR364 Grassy Road
- TR600 Spencer Gap
- TR603 Thrift Cove Loop
- TR606 Wash Creek
- TR611 Yellow Gap
- TR660 Ledford Branch
- TR661 Hardtimes Connector
- TR664 Deer Lake Lodge
- TR665 Boyd Branch
- TR666 Wolf Branch