



# Okhissa Lake Recreation Area

## Homochitto Ranger District



**Ranger District Office**  
1200 Hwy. 184 East  
Meadville, MS 39653  
601-384-5876



**Location**  
Located approximately 3 miles south of Bude on Hwy 98



**Open Dates/Hours**  
Open year-round unless weather conditions require closures

Day Use Hours: sunrise to sunset



**Campsites**  
Camping is not available



**Water**  
Potable water is provided year round



**Restrooms**  
Restrooms are available



**Trash Pick-up**  
Trash pick-up is available



**Fees**  
Day Use – \$5 per vehicle

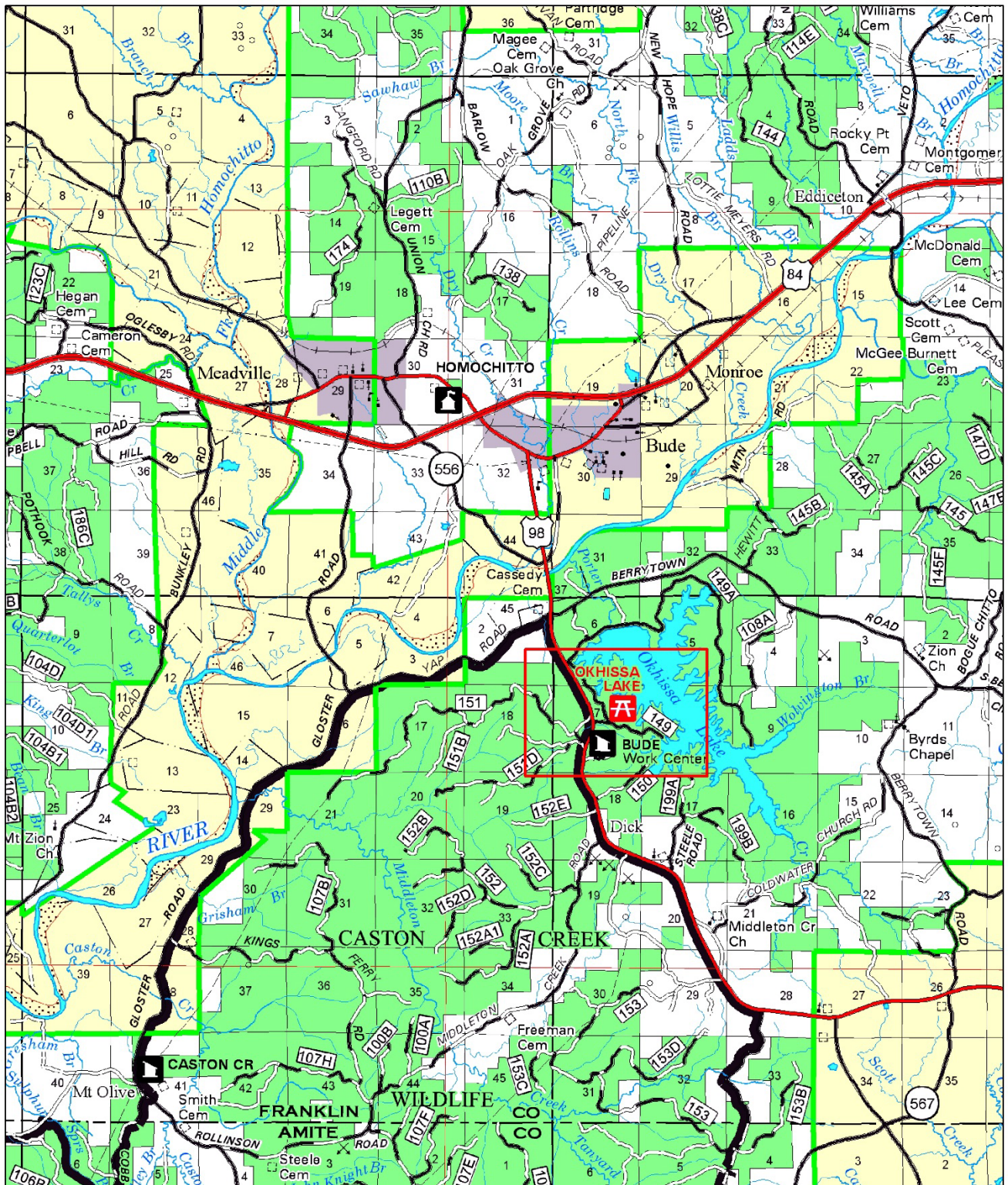
Okhissa Lake Recreation Area provides a 1,075 acre lake that provides opportunities for boating and fishing, and leisure enjoyment. World renowned bass fisherman “Bill Dance” sanctioned Okhissa as his first signature lake. He was involved in developing the fish habitat during the planning stage. Facilities include two boat ramps, parking, gazebo with an expansive view of the lake, and three restrooms.

**Trails nearby:** Clear Springs Recreation Area

**Closest Town:** Bude    **Latitude:** 31.416622  
**County:** Franklin    **Longitude:** -90.845971



# Okhissa Lake Recreation Area



[www.fs.usda.gov/recreation/mississippi/recreation](http://www.fs.usda.gov/recreation/mississippi/recreation)

USDA is an equal opportunity provider, employer and lender.



You are responsible for your own safety. All outdoor activities have inherent risks and you may encounter a variety of unexpected and/or dangerous conditions. It is your responsibility to be informed and take precautions. Learn more at [www.fs.usda.gov/r8](http://www.fs.usda.gov/r8).