



Camp Hale-Continental Divide National Monument

Self-Guided Auto Tour

Start your tour at the interpretive pull out off U.S. Highway 24 on the south end of Camp Hale – Five interpretive panels overlook the Pando Valley, an important area used by the Ute people for thousands of years and where 10,000 soldiers of the 10th Mountain Division trained at Camp Hale.

Travel north on U.S. 24 and take the first right into the main Camp Hale entrance, National Forest System Road (NFSR) 716.1B. Stop at the kiosks on either side of the stone entrance walls for additional information and a map of the area.

Just beyond the kiosks, take an immediate left (north) on NFSR 716.1C to visit another interpretive area, which includes picnic tables and information on the history of the 10th Mountain Division.

Head back to the main road NFSR 716.1B and take a left (east), crossing the Eagle River over the Bailey Bridge. Remnants of the Field House are immediately on your right (south). As a city unto itself, the camp had entertainment and recreation, such as a theater and this Field House. You can still see the foundations of the Field House, one of the larger structures at Camp Hale. Regimental and divisional dances and parties were held here, even U.S.O. shows. Please stay on the road, do not venture into the Field House.

Continue east until the road ends. Take a left (north) on NFSR 714 and then park along the side of the

road to view the rock-climbing area. These cliffs are the same cliffs where troops from the 10th Mountain Division developed rock climbing skills they would later use in Italy. This area requires technical rock-climbing skills and equipment. Much of the rock-climbing equipment used today was pioneered by the 10th Mountain Division. There is a vault toilet just below the climbing wall.

Return to NFSR 714, traveling south then east for a little more than a mile, after you pass Ranch Creek Road NFSR 755, you'll see the remnants of the rifle range earthen berms to the right (south). The concrete bunkers are along the farthest berm to the south in the distance.

Eagle River – Return to the Field House and cross back over the Eagle River. Take a left (south) on NFSR 716 and follow the river towards Camp Hale Memorial Campground. The river no longer twists and meanders through the glacial valley as it did for thousands of years. The Army channelized it to make way for Camp Hale, which has had a lasting impact on flora and fauna in the valley.

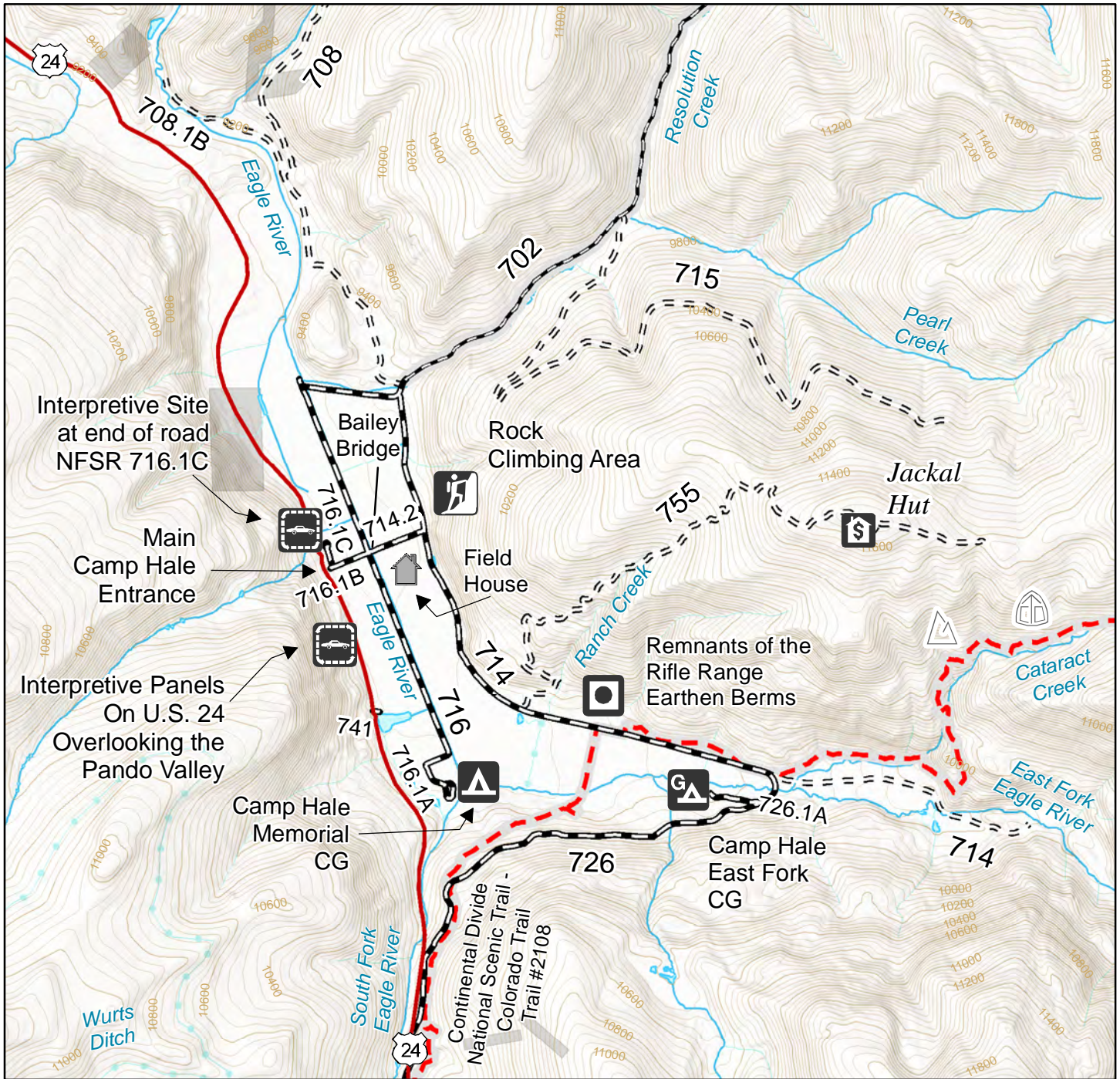
Safety First

Stay on existing roads and trails! Because this is a historic military training camp, there is potential to find unexploded ordinances as well as to stir up asbestos in the soil left over from the old buildings. Do not touch suspicious items, call 911. Sheep graze seasonally -- do not approach the sheep or guard dogs, and keep your own dogs on a leash for their safety.



Camp Hale-Continental Divide National Monument

Driving Tour Map - Camp Hale Area



Legend

Recreation

- Interpretive Panels
- Field House
- Rock Climbing Area
- Remnants of Rifle Range Earthen Berms
- Campground
- Group Campground
- Hut

Trails

- Colorado Trail
- Continental Divide National Scenic Trail
- Continental Divide National Scenic Trail - Colorado Trail

Roads

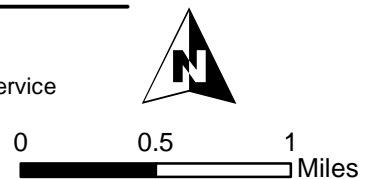
- Passenger Car - Gravel
- Passenger Car (SUV Only) - Gravel
- 4WD High Clearance Vehicles
- US Highway 24

Administrative

- USDA Forest Service
- Private

Water

- River
- Lake



Disclaimer

The USDA Forest Service makes no warranty, expressed or implied, regarding the data displayed on this map, and reserves the right to correct, update, modify, or replace this information without notification.