



**U.S. Department of Agriculture, U.S. Forest Service  
Humboldt-Toiyabe National Forest  
Spring Mountains National Recreation Area  
National Forest System Road and Trail Use**

**PROHIBITIONS**

Pursuant to 16 U.S.C. § 551 and 36 C.F.R. § 261.50(b), the following is prohibited on all National Forest System (NFS) roads and trails in the Spring Mountains National Recreation Area, Humboldt-Toiyabe National Forest, described below and shown on the attached map incorporated into this Order as Exhibit A ( "Described Roads and Trails").

1. Operating a motor vehicle when there is ice or snow on the Described Roads or Trails without either: at least two tire chains or traction devices, or 4-wheel drive capability with snow-rated tires on all wheels. 36 C.F.R. §§ 261.54(d), 261.55(d)

**EXEMPTIONS**

Pursuant to 36 C.F.R. § 261.50(e), the following persons are exempt from this Order:

2. Persons operating an off-highway vehicle, which is defined as a motor vehicle primarily designed for off-highway and all-terrain use, including all-terrain vehicles or motorcycles, dune buggies, and over-snow vehicles.
3. Persons with Forest Service Permit No. FS-7700-48 (Permit for Use of Roads, Trails, or Areas Restricted by Regulation or Order), specifically exempting them from this Order or a written determination by a Forest Service authorized officer that a permit is not required under 36 C.F.R. § 251.50(e)(1) or (2).
4. Any Federal, State, or Local Officer, or member of an organized rescue or firefighting resource in the performance of an official duty.

**DESCRIBED ROADS AND TRAILS**

The Described Roads and Trails are all NFS Roads and Trails within the boundaries of the Spring Mountains National Recreation Area, Humboldt-Toiyabe National Forest.

**PURPOSE**

The purpose of this Order is to protect public safety in the Spring Mountains National Recreation Area, which is close to urban centers and has had high numbers of unequipped motor vehicles with travel issues in past winter seasons on minimally

maintained Forest Service Roads. This order is implemented to require vehicles are operated with the necessary winterized equipment to recreate safely in adverse road conditions.

**IMPLEMENTATION**

1. This Order shall be in effect from March 14, 2023 at 00:00am through March 14, 2028 at 00:00am, unless rescinded.
2. A map identifying the Described Roads and Trails is attached and made part of this Order as Exhibit A. For a digital version of this Order and Exhibit A, go to <https://www.fs.usda.gov/alerts/htnf/alerts-notice>.
3. Unless otherwise expressly defined in this Order, the terms used in this Order are defined by the regulations of the Secretary of Agriculture, 36 C.F.R. Chapter II, Parts 200-299. If there are terms in this Order that are not expressly defined in the Order or 36 C.F.R. Chapter II, Parts 200-299, their meaning shall be determined by their plain language definitions.
4. A violation of the above prohibitions is punishable as a Class B misdemeanor by a fine of not more than \$5,000 for individuals and \$10,000 for organizations, or by imprisonment for not more than six months, or both. 16 U.S.C. § 551; 18 U.S.C. §§ 3559, 3571, and 3581.
5. Contact the Spring Mountains National Recreation Area at 4701 North Torrey Pines Dr. Las Vegas, NV 89130 (702) 872-5486, and the Humboldt-Toiyabe National Forest Supervisor's Office at 1200 Franklin Way, Sparks NV 89431 (715) 331-6444, for more information about this Order.
6. This Order supersedes any previous Orders prohibiting the same or similar acts on the Described Roads and Trails.

Signed and issued on \_\_\_\_\_ the 14th day of March, 2023.

\_\_\_\_\_  
Forest Supervisor  
Humboldt-Toiyabe National Forest

# Exhibit A - Order #04-17-23-01

## OPERATOR RESPONSIBILITIES

Operating a motor vehicle on National Forest System roads, National Forest System trails, and in areas on National Forest System lands carries a greater responsibility than operating that vehicle in a city or other developed setting. Not only must you know and follow all applicable traffic laws, you need to show concern for the environment as well as other forest users. The misuse of motor vehicles can lead to the temporary or permanent closure of any designated road, trail, or area. As a motor vehicle operator, you are also subject to State traffic law, including State requirements for licensing, registration, and operation of the vehicle in question.

Motor vehicle use, especially off-highway vehicle use, involves inherent risks that may cause property damage, serious injury, and possibly death to participants. Drive cautiously and anticipate rough surfaces and features, such as snow, mud, vegetation, and water crossings common to remote driving conditions. By your participation, you voluntarily assume full responsibility for these damages, risks, and dangers. Take care at all times to protect yourself and those under your responsibility.

Much of the Spring Mountains National Recreation Area is remote. Medical assistance may not be readily available. Cellular telephones do not work in many areas of the Spring Mountains National Recreation Area. Take adequate food, water, first-aid supplies, and other equipment appropriate for the conditions and expected weather.

**ALWAYS REMEMBER TO RESPECT PRIVATE LAND! PROTECT YOUR PRIVILEGE. STAY ON DESIGNATED ROADS AND TRAILS AND IN DESIGNATED AREAS.**

Read and understand this map in its entirety. If you have questions please contact the Spring Mountains National Recreation Area for clarification.

As a motor vehicle operator on a National Forest System road, trail, or area, you must comply with this map, as well as all Federal, State, and local laws and regulations. Compliance with these rules is your responsibility.

## PROHIBITIONS

**It is prohibited to possess or operate a motor vehicle on National Forest System lands on the Spring Mountains National Recreation Area other than in accordance with these designations (36 CFR 261.13).**

Violators of 36 CFR 261.13 are subject to a fine of up to \$5,000, imprisonment for up to 6 months, or both (18 U.S.C. 3571(e)). This prohibition applies regardless of the presence or absence of signs.

This map does not display nonmotorized uses, over-snow uses, or other facilities and attractions on the Spring Mountains National Recreation Area. Obtain forest visitor information from the local national forest office.

Designated roads, trails, and areas may also be subject to temporary, emergency closures. As a visitor, you must comply with signs notifying you of such restrictions. A national forest may issue an order to close a road, trail, or area on a temporary basis to protect the life, health or safety of forest visitors or the natural or cultural resources in these areas. Such a temporary and/or emergency closure are consistent with the Travel Management Rule (36 CFR 212.52 (b), 36 CFR 261 subpart B).

The designation "road or trail open to all motor vehicles" does not supersede State traffic law.

## Motor Vehicle Use Map

Spring Mountains National Recreation Area  
Humboldt-Toiyabe National Forest

Nevada Forest Service

United States Department of Agriculture

## PURPOSE AND CONTENTS OF THIS MAP

The designations shown on this motor vehicle use map (MVUM) were made by the responsible official pursuant to 36 CFR 212.51; are effective as of the date on the front cover of this MVUM; and will remain in effect until superseded by next year's MVUM.

William A. Dünkelberger, Forest Supervisor

It is the responsibility of the user to acquire the current MVUM. This map shows the National Forest System roads, National Forest System trails, and the areas on National Forest System lands in the Spring Mountains National Recreation Area that are designated for motor vehicle use pursuant to 36 Code of Federal Regulations (CFR) 212.51. This MVUM also identifies the vehicle classes allowed on each route and in each area; and any seasonal restrictions that apply on those routes and in those areas.

Designation of a road, trail, or area for motor vehicle use by a particular class of vehicle under 36 CFR 212.51 should not be interpreted as encouraging or inviting use or implying that the road, trail, or area is passable, actively maintained, or safe for travel. Motor vehicle designations include parking along designated routes and at facilities associated with designated routes when it is safe to do so and when not causing damage to National Forest System resources. Seasonal weather conditions and natural events may render designated roads and trails impassable for extended periods. Designated areas may contain dangerous or impassable terrain. Many designated roads and trails may be passable only by high-clearance vehicles or four-wheel-drive vehicles. Maintenance of designated roads and trails will depend on available resources, and many may receive little maintenance.

### Legend

- Roads Open to Highway Legal Vehicles
- Roads Open to All Vehicles
- Trails Open to All Vehicles
- Trails Open to Vehicles 50" or Less in Width
- Interstate
- Highways, U.S. State
- Other Public Roads
- Short Route Identifier
- FS Campground
- Picnic Area
- Information Site
- Peaks
- Forest/NRA Boundary
- National Forest System Lands
- Non-National Forest System Lands within the National Forest
- Wilderness Areas
- Township and Range Lines
- Section Lines

## EXPLANATION OF LEGEND ITEMS

Roads Open to Highway Legal Vehicles Only:

These roads are open only to motor vehicles licensed under State law for general operation on all public roads within the State.

Roads Open to All Vehicles:

These roads are open to all motor vehicles, including smaller off-highway vehicles that may not be licensed for highway use (but not to oversize or overweight vehicles under State traffic law).

Trails Open to All Vehicles:

These trails are open to all motor vehicles, including both highway legal and nonhighway legal vehicles.

Trails Open to Vehicles 50" or Less in Width:

These trails are open only to motor vehicles less than 50 inches in width at the widest point on the vehicle.

Other Public Roads and Trails:

Interstate  
Highways, U.S., State  
Other Public Roads

These symbols are used to show routes the Forest Service does not have jurisdiction over and has not designated for motorized use. These symbols are part of the reference layers showing connections to towns and cities outside the forest boundary.

Short Route Identifier:

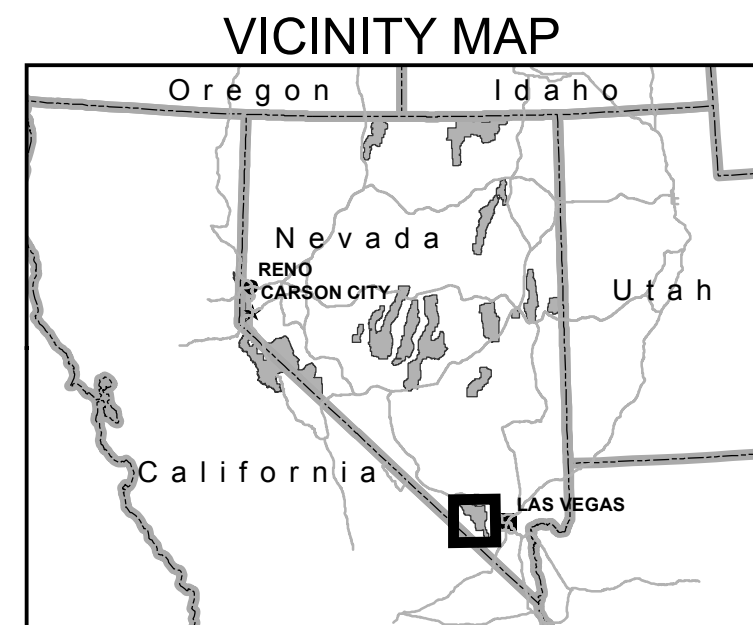
70333

This symbol is used for routes that are too short to show an actual symbol type on the map. The symbol contains the number of the road or trail. Users should refer to the corresponding number in the Short Route Table for designation information.

The U.S. Department of Agriculture (USDA) prohibits discrimination in all its programs and activities on the basis of race, color, national origin, age, disability, and where applicable, sex, marital status, familial status, parental status, religion, sexual orientation, genetic information, political beliefs, reprisal, or because all or part of an individual's income is derived from any public assistance program. (Not all prohibited bases apply to all programs.) Persons with disabilities who require alternative means for communication of program information (Braille, large print, audiotape, etc.) should contact USDA's TARGET Center at (202) 720-2600 (voice and TDD). To file a complaint of discrimination, write to USDA, Director, Office of Civil Rights, 1400 Independence Avenue, S.W., Washington, D.C. 20250-9410, or call (800) 795-3272 (voice) or (202) 720-6382 (TDD). USDA is an equal opportunity provider and employer.

Road and trail signs may only show the last 3 digits of the route number and letter designation (if used).

All roads within developed campgrounds and picnic areas are open to highway legal vehicles only.



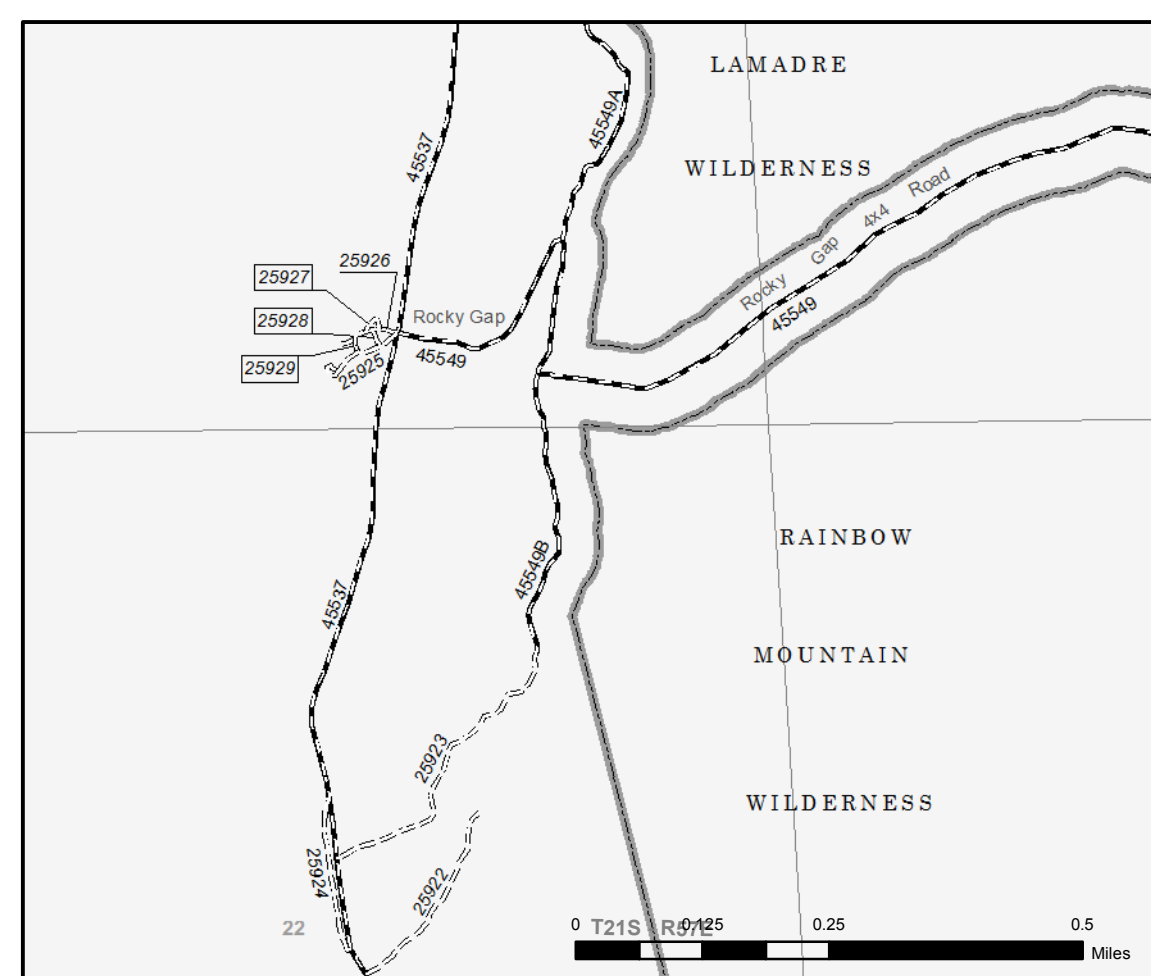
## INFORMATION SOURCES

Spring Mountains National Recreation Area  
4701 North Torrey Pines Drive  
Las Vegas, NV 89130-2301  
(702) 515-5400

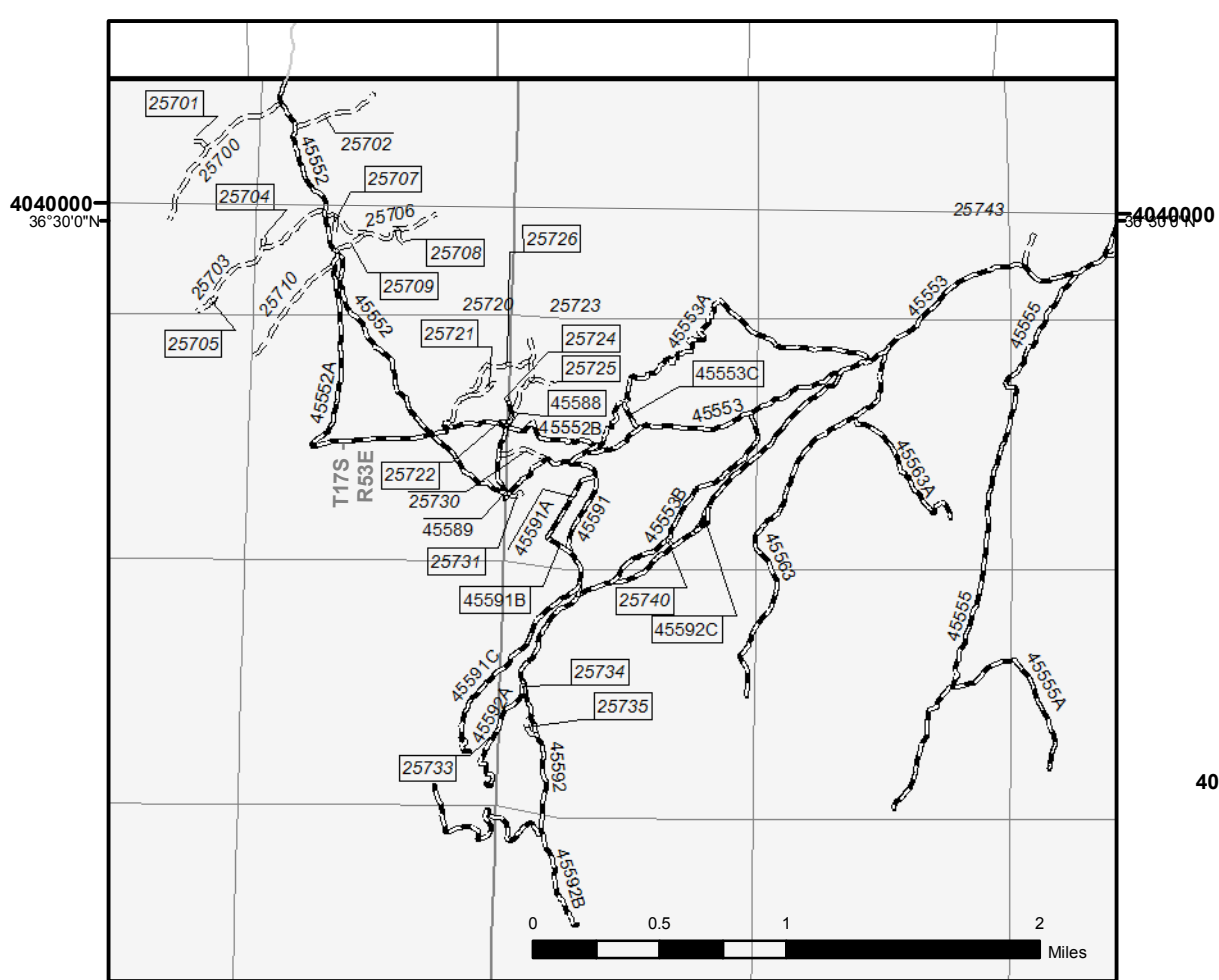
Forest Supervisor  
Humboldt-Toiyabe National Forest  
1200 Franklin Way  
Sparks, Nevada 89431  
(775) 331-6444

[www.fs.usda.gov/main/hntf](http://www.fs.usda.gov/main/hntf)

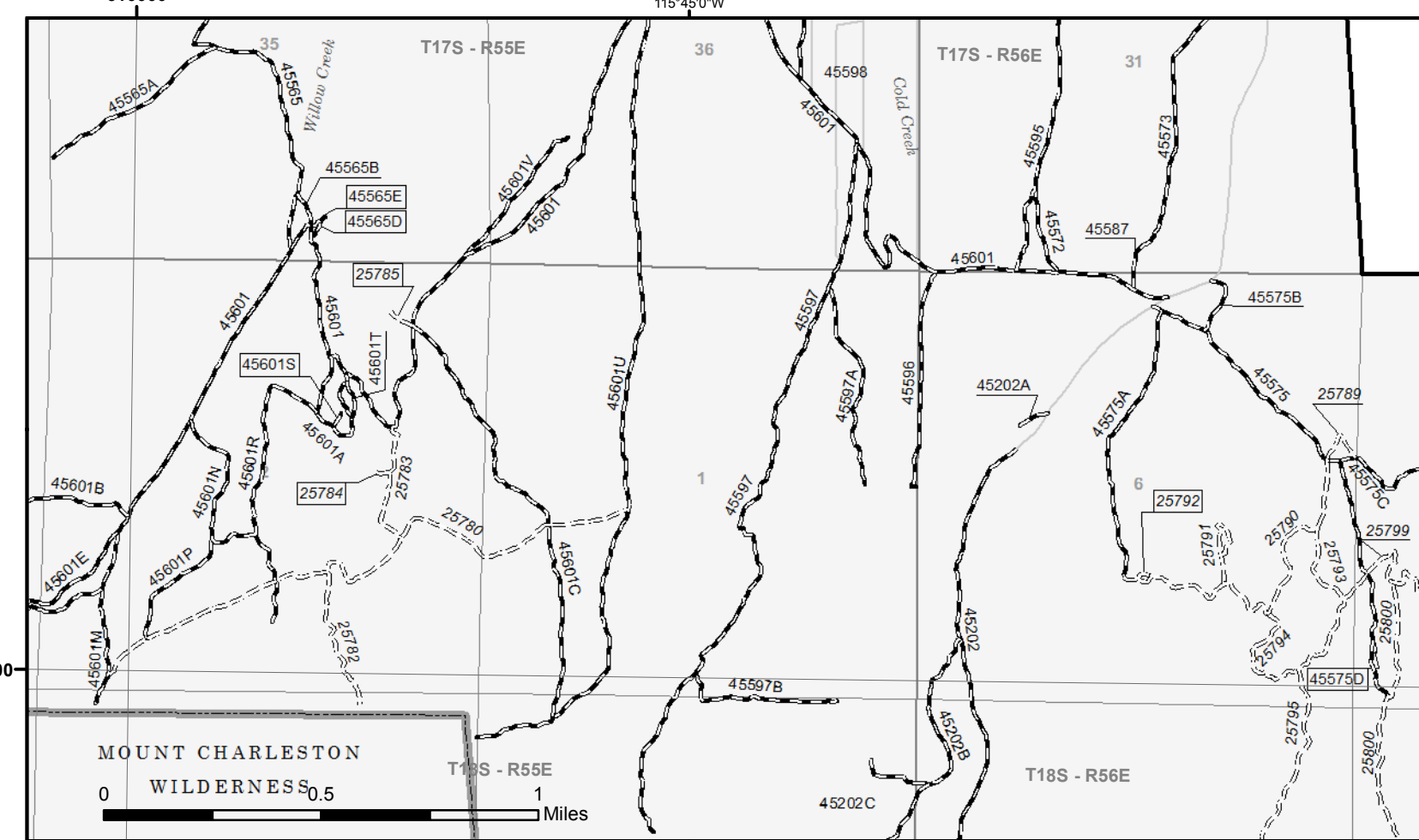
## Rocky Gap Area



## Stirling Area

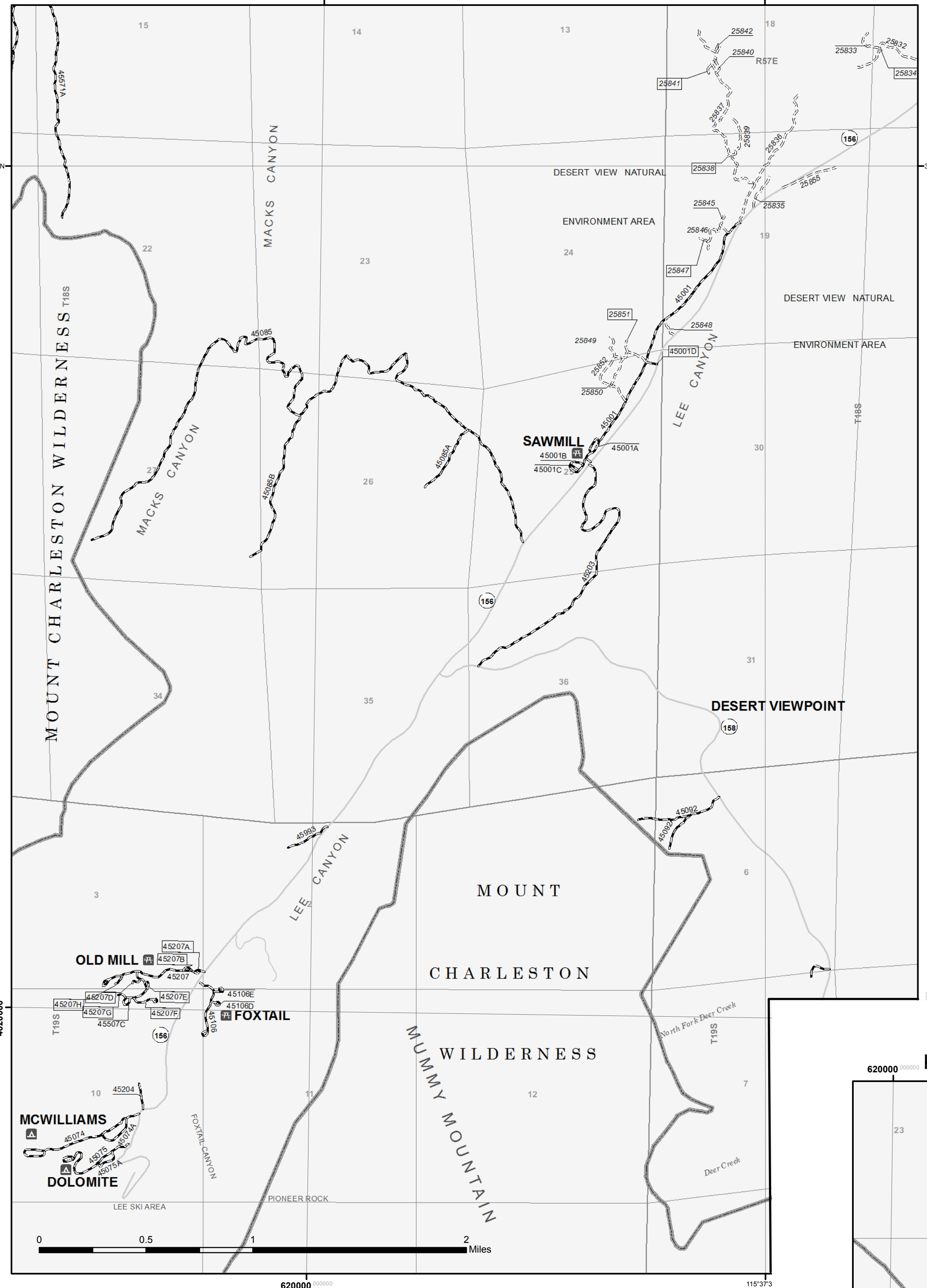


## Cold Creek Area



0 0.5 1 2 Miles

Spring Mountains NRA  
0 0.5 1 2 3 4 5 6 7 Miles

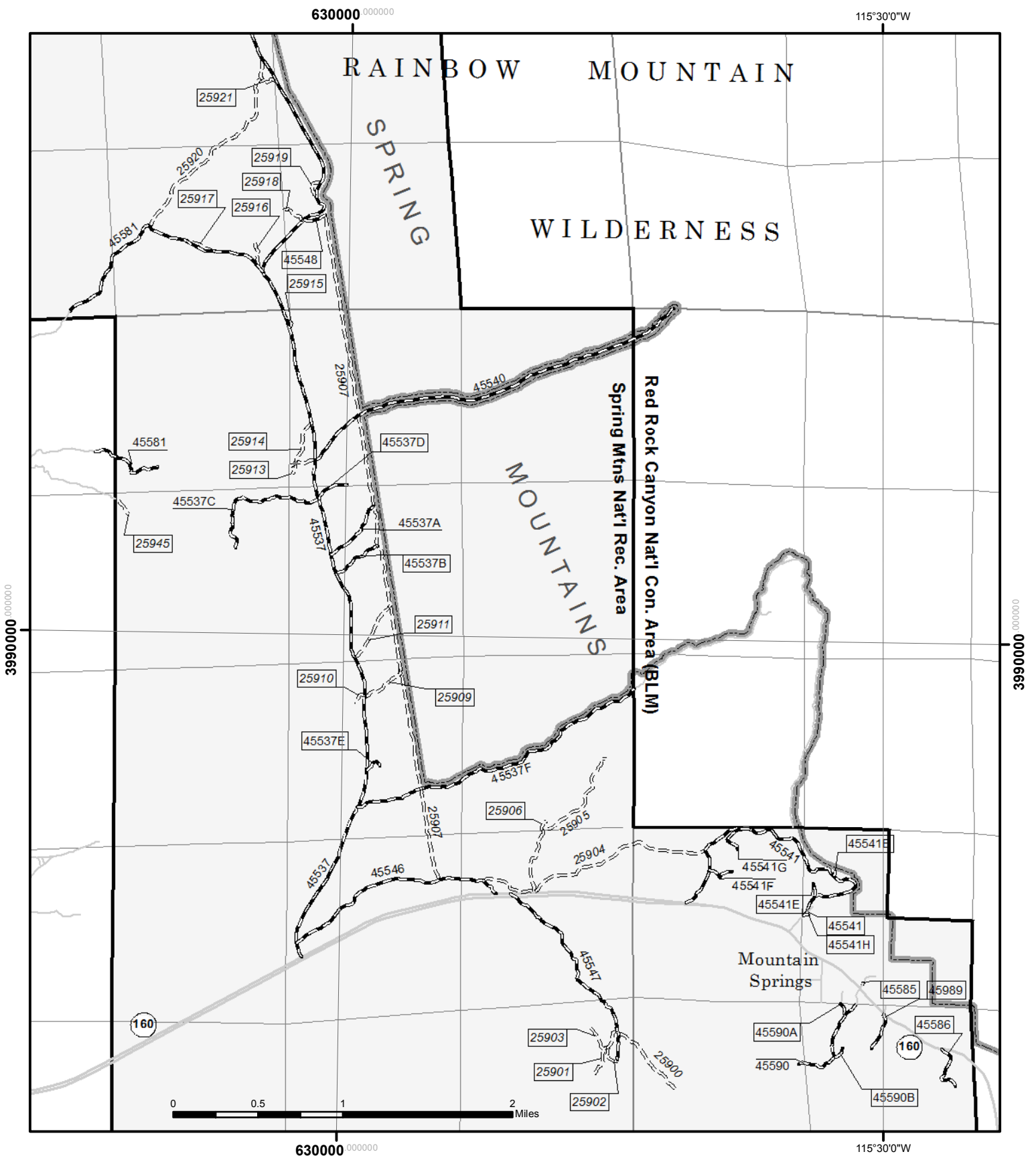


# Exhibit A - Order #04-17-23-01

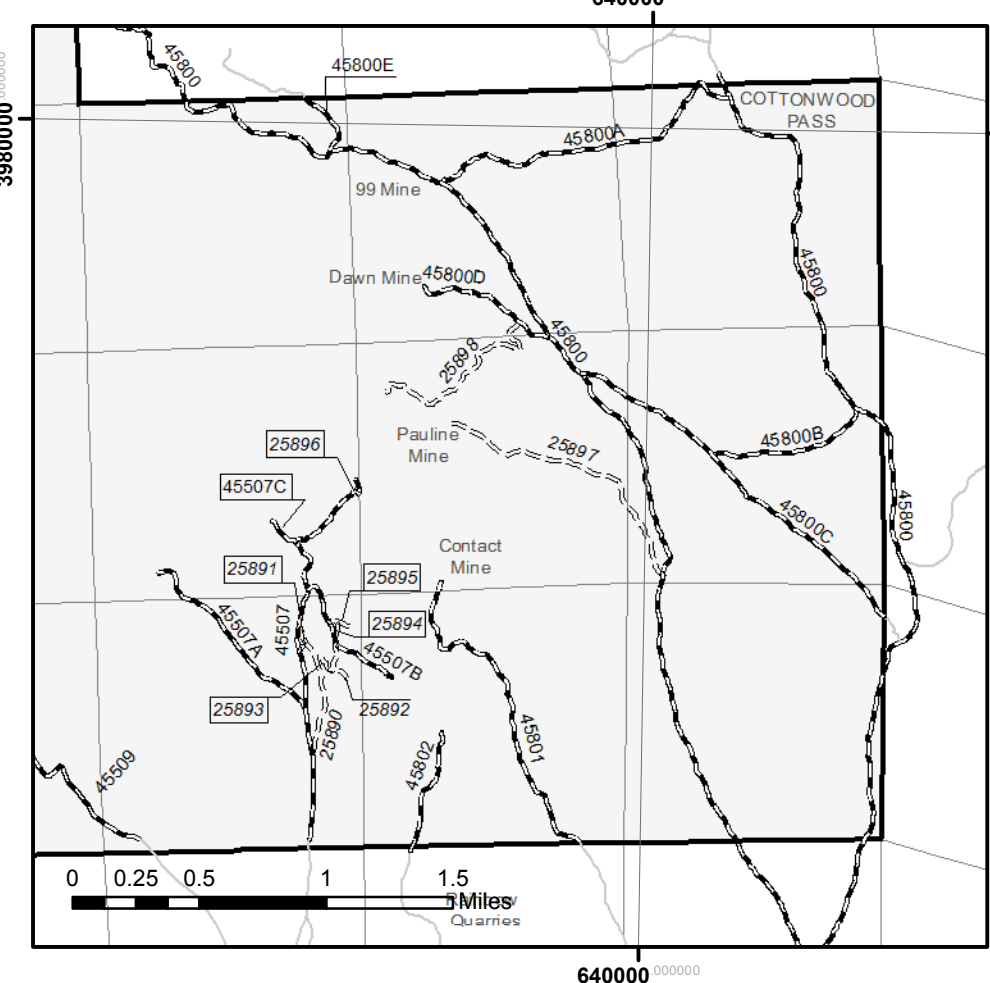
Designations for Short Routes								
Route #	Route Designation	Length (ft)	Route #	Route Designation	Length (ft)	Route #	Route Designation	Length (ft)
45081C	Road open to all Vehicles, Yearlong	790	45556A	Road open to all Vehicles, Yearlong	1325	25796	Trail open to all vehicles, Yearlong	1963
45566C	Road open to all Vehicles, Yearlong	1624	45541E	Road open to all Vehicles, Yearlong	411	25784	Trail open to all vehicles, Yearlong	193
45995	Road open to all Vehicles, Yearlong	960	45601H	Road open to all Vehicles, Yearlong	1107	25740	Trail open to all vehicles, Yearlong	194
45556E	Road open to all Vehicles, Yearlong	1446	45207B	Road open to all Vehicles, Yearlong	284	25735	Trail open to all vehicles, Yearlong	576
45590A	Road open to all Vehicles, Yearlong	428	45079	Road open to all Vehicles, Yearlong	1637	25734	Trail open to all vehicles, Yearlong	48
45574B	Road open to all Vehicles, Yearlong	172	45536A	Road open to all Vehicles, Yearlong	618	25701	Trail open to all vehicles, Yearlong	327
45553C	Road open to all Vehicles, Yearlong	632	45568A	Road open to all Vehicles, Yearlong	1836	25881	Trail open to all vehicles, Yearlong	137
45565D	Road open to all Vehicles, Yearlong	240	45081D	Road open to all Vehicles, Yearlong	826	25970	Trail open to all vehicles, Yearlong	154
45576A	Road open to all Vehicles, Yearlong	931	45570A	Road open to all Vehicles, Yearlong	1583	25928	Trail open to all vehicles, Yearlong	93
45991	Road open to all Vehicles, Yearlong	365	45588	Road open to all Vehicles, Yearlong	542	25896	Trail open to all vehicles, Yearlong	147
45541	Road open to all Vehicles, Yearlong	205	45551A	Road open to all Vehicles, Yearlong	1075	25834	Trail open to all vehicles, Yearlong	70
45585	Road open to all Vehicles, Yearlong	55	45569D	Road open to all Vehicles, Yearlong	536	25808	Trail open to all vehicles, Yearlong	57
45582B	Road open to all Vehicles, Yearlong	270	45601K	Road open to all Vehicles, Yearlong	626	25804	Trail open to all vehicles, Yearlong	792
45582B	Road open to all Vehicles, Yearlong	1993	45081B	Road open to all Vehicles, Yearlong	991	25733	Trail open to all vehicles, Yearlong	51
45582B	Road open to all Vehicles, Yearlong	592	45601S	Road open to all Vehicles, Yearlong	185	25960	Trail open to all vehicles, Yearlong	1414
45601J	Road open to all Vehicles, Yearlong	477	45403B	Road open to all Vehicles, Yearlong	1817	25945	Trail open to all vehicles, Yearlong	540
45556B	Road open to all Vehicles, Yearlong	137	45081F	Road open to all Vehicles, Yearlong	1128	25895	Trail open to all vehicles, Yearlong	301
45576C	Road open to all Vehicles, Yearlong	11	45576D	Road open to all Vehicles, Yearlong	703	25831	Trail open to all vehicles, Yearlong	206
45556F	Road open to all Vehicles, Yearlong	210	45601L	Road open to all Vehicles, Yearlong	614	25724	Trail open to all vehicles, Yearlong	133
45569C	Road open to all Vehicles, Yearlong	307	45557A	Road open to all Vehicles, Yearlong	762	25726	Trail open to all vehicles, Yearlong	34
45207H	Road open to all Vehicles, Yearlong	278	45569B	Road open to all Vehicles, Yearlong	1253	25708	Trail open to all vehicles, Yearlong	366
45531H	Road open to all Vehicles, Yearlong	282	45207D	Road open to all Vehicles, Yearlong	281	25725	Trail open to all vehicles, Yearlong	502
45565E	Road open to all Vehicles, Yearlong	226	45590B	Road open to all Vehicles, Yearlong	400	25705	Trail open to all vehicles, Yearlong	124
45207A	Road open to all Vehicles, Yearlong	185	45556D	Road open to all Vehicles, Yearlong	437	25915	Trail open to all vehicles, Yearlong	316
45559B	Road open to all Vehicles, Yearlong	418	45531E	Road open to all Vehicles, Yearlong	383	25851	Trail open to all vehicles, Yearlong	323
45207E	Road open to all Vehicles, Yearlong	204	45507C	Road open to all Vehicles, Yearlong	709	25958	Trail open to all vehicles, Yearlong	97
45582A	Road open to all Vehicles, Yearlong	232	45592C	Road open to all Vehicles, Yearlong	607	25743	Trail open to all vehicles, Yearlong	765
45530B	Road open to all Vehicles, Yearlong	177	45510A	Road open to all Vehicles, Yearlong	72	25947	Trail open to all vehicles, Yearlong	268
45081E	Road open to all Vehicles, Yearlong	707	45532E	Road open to all Vehicles, Yearlong	201	25937	Trail open to all vehicles, Yearlong	533
45557C	Road open to all Vehicles, Yearlong	997	45576B	Road open to all Vehicles, Yearlong	35	25940	Trail open to all vehicles, Yearlong	132
45577B	Road open to all Vehicles, Yearlong	520	45001D	Road open to all Vehicles, Yearlong	281	25805	Trail open to all vehicles, Yearlong	571
45557B	Road open to all Vehicles, Yearlong	1665	45548	Road open to all Vehicles, Yearlong	724	25785	Trail open to all vehicles, Yearlong	324
45103B	Road open to all Vehicles, Yearlong	286	25954	Trail open to vehicles 50" or less	1075	25810	Trail open to all vehicles, Yearlong	22
45591B	Road open to all Vehicles, Yearlong	596	25972	Trail open to all vehicles, Yearlong	287	25750	Trail open to all vehicles, Yearlong	1102
45537E	Road open to all Vehicles, Yearlong	624	25952	Trail open to all vehicles, Yearlong	116	25752	Trail open to all vehicles, Yearlong	734
45541B	Road open to all Vehicles, Yearlong	166	25942	Trail open to all vehicles, Yearlong	1572	25772	Trail open to all vehicles, Yearlong	1026
45550A	Road open to all Vehicles, Yearlong	859	25902	Trail open to all vehicles, Yearlong	697	25876	Trail open to all vehicles, Yearlong	347
45510B	Road open to all Vehicles, Yearlong	1110	25894	Trail open to all vehicles, Yearlong	530	25893	Trail open to all vehicles, Yearlong	403
45601D	Road open to all Vehicles, Yearlong	938	25891	Trail open to all vehicles, Yearlong	226	25921	Trail open to all vehicles, Yearlong	528
45001C	Road open to all Vehicles, Yearlong	263	25860	Trail open to all vehicles, Yearlong	814	25951	Trail open to all vehicles, Yearlong	260
45207G	Road open to all Vehicles, Yearlong	235	25841	Trail open to all vehicles, Yearlong	363	25956	Trail open to all vehicles, Yearlong	1379
45541H	Road open to all Vehicles, Yearlong	161	25838	Trail open to all vehicles, Yearlong	89	25927	Trail open to all vehicles, Yearlong	142
45996A	Road open to all Vehicles, Yearlong	2021	25797	Trail open to all vehicles, Yearlong	1694	25906	Trail open to all vehicles, Yearlong	492
45531G	Road open to all Vehicles, Yearlong	69	25792	Trail open to all vehicles, Yearlong	192	25943	Trail open to all vehicles, Yearlong	946
45574A	Road open to all Vehicles, Yearlong	892	25722	Trail open to all vehicles, Yearlong	294	25944	Trail open to all vehicles, Yearlong	1263
45575D	Road open to all Vehicles, Yearlong	112	25709	Trail open to all vehicles, Yearlong	721	25798	Trail open to all vehicles, Yearlong	191
45510C	Road open to all Vehicles, Yearlong	834	25704	Trail open to all vehicles, Yearlong	220	25953	Trail open to all vehicles, Yearlong	94
45556G	Road open to all Vehicles, Yearlong	384	25957	Trail open to all vehicles, Yearlong	183	25707	Trail open to all vehicles, Yearlong	368
45559A	Road open to all Vehicles, Yearlong	656	25950	Trail open to all vehicles, Yearlong	65	25955	Trail open to all vehicles, Yearlong	760
45078	Road open to all Vehicles, Yearlong	668	25941	Trail open to all vehicles, Yearlong	263	25936	Trail open to all vehicles, Yearlong	1927
45550	Road open to all Vehicles, Yearlong	1782	25929	Trail open to all vehicles, Yearlong	80	25863	Trail open to all vehicles, Yearlong	473
45094A	Road open to all Vehicles, Yearlong	313	25910	Trail open to all vehicles, Yearlong	459	25971	Trail open to all vehicles, Yearlong	172
45571B	Road open to all Vehicles, Yearlong	1066	25847	Trail open to all vehicles, Yearlong	249	25919	Trail open to all vehicles, Yearlong	707
45510D	Road open to all Vehicles, Yearlong	995	25809	Trail open to all vehicles, Yearlong	388	25731	Trail open to all vehicles, Yearlong	431
45559C	Road open to all Vehicles, Yearlong	148	25806	Trail open to all vehicles, Yearlong	1618	25721	Trail open to all vehicles, Yearlong	676

# Spring Mountains National Recreation Area

Mountain Springs Area



Cottonwood Pass Area



Kyle Canyon Area

