

**EXHIBIT A:****Described Areas on the Arapaho and Roosevelt National Forests for Order # ARP-2024-04****1) Developed Recreation Sites considered a ‘Described Area’ for Order # ARP-2024-04**

| <b>RANGER DISTRICT</b> | <b>DEVELOPED RECREATION SITE NAME</b> | <b>SITE TYPE</b> |
|------------------------|---------------------------------------|------------------|
| Boulder                | ARICKAREE                             | PICNIC SITE      |
| Boulder                | BEAVER BOG                            | TRAILHEAD        |
| Boulder                | BEAVER CREEK                          | TRAILHEAD        |
| Boulder                | BEAVER RESERVOIR                      | TRAILHEAD        |
| Boulder                | BRAINARD LAKE                         | FISHING SITE     |
| Boulder                | BRAINARD LAKE DAY USE                 | PICNIC SITE      |
| Boulder                | BRAINARD LAKE GATEWAY                 | TRAILHEAD        |
| Boulder                | BRIGHT                                | TRAILHEAD        |
| Boulder                | BRIGHT EXTENSION                      | TRAILHEAD        |
| Boulder                | BUCHANAN PASS                         | TRAILHEAD        |
| Boulder                | CAMP DICK                             | CAMPGROUND       |
| Boulder                | CARIBOU                               | CAMPING AREA     |
| Boulder                | CARIBOU 5-POINTS                      | TRAILHEAD        |
| Boulder                | CARIBOU RAINBOW                       | TRAILHEAD        |
| Boulder                | CARIBOU SOUTH                         | TRAILHEAD        |
| Boulder                | CERAN ST. VRRAIN                      | TRAILHEAD        |
| Boulder                | CONEY CREEK                           | TRAILHEAD        |
| Boulder                | CONEY FLATS 4X4                       | TRAILHEAD        |
| Boulder                | COULSON GULCH                         | TRAILHEAD        |
| Boulder                | DREAM CANYON                          | TRAILHEAD        |
| Boulder                | DRY ST. VRRAIN                        | TRAILHEAD        |
| Boulder                | EAST PORTAL                           | TRAILHEAD        |
| Boulder                | EAST WINIGER RIDGE                    | TRAILHEAD        |
| Boulder                | FOREST LAKES                          | TRAILHEAD        |
| Boulder                | FORSYTHE CANYON                       | TRAILHEAD        |
| Boulder                | FOURTH OF JULY                        | TRAILHEAD        |
| Boulder                | FRONT RANGE                           | TRAILHEAD        |
| Boulder                | GORDON GULCH                          | CAMPING AREA     |
| Boulder                | HESSIE                                | TRAILHEAD        |
| Boulder                | JAMES PEAK LAKE                       | TRAILHEAD        |
| Boulder                | KELLY DAHL                            | CAMPGROUND       |
| Boulder                | LONG LAKE                             | TRAILHEAD        |
| Boulder                | LOST LAKE                             | CAMPING AREA     |
| Boulder                | LOWER LEFTHAND                        | DAY USE AREA     |
| Boulder                | MAGNOLIA                              | TRAILHEAD        |
| Boulder                | MEEKER PARK CG                        | CAMPGROUND       |

| RANGER DISTRICT | DEVELOPED RECREATION SITE NAME  | SITE TYPE             |
|-----------------|---------------------------------|-----------------------|
| Boulder         | MEEKER PARK PA                  | PICNIC SITE           |
| Boulder         | MIDDLE ST. VRAIN                | TRAILHEAD             |
| Boulder         | MIDDLE ST. VRAIN/ BUCHANAN PASS | TRAILHEAD             |
| Boulder         | MITCHELL CREEK                  | PICNIC SITE           |
| Boulder         | MITCHELL LAKE                   | TRAILHEAD             |
| Boulder         | MOUNT ALTO                      | PICNIC SITE           |
| Boulder         | NIWOT                           | TRAILHEAD             |
| Boulder         | OLIVE RIDGE                     | CAMPGROUND            |
| Boulder         | OSPREY TH                       | TRAILHEAD             |
| Boulder         | PAWNEE                          | CAMPGROUND            |
| Boulder         | PEACEFUL VALLEY                 | CAMPGROUND            |
| Boulder         | RAINBOW LAKES CG                | CAMPGROUND            |
| Boulder         | RAINBOW LAKES TH                | TRAILHEAD             |
| Boulder         | RED ROCK LAKE                   | FISHING SITE          |
| Boulder         | RUBY GULCH                      | CAMPING AREA          |
| Boulder         | SOURDOUGH                       | TRAILHEAD             |
| Boulder         | SOUTH BOULDER CREEK             | INTERPRETIVE SITE     |
| Boulder         | SOUTH MAGNOLIA                  | TRAILHEAD             |
| Boulder         | SOUTH ST. VRAIN                 | TRAILHEAD             |
| Boulder         | SOUTH ST. VRAIN NO. 2           | FISHING SITE          |
| Boulder         | SOUTH ST. VRAIN NO. 3           | FISHING SITE          |
| Boulder         | SOUTH ST. VRAIN NO. 4           | FISHING SITE          |
| Boulder         | SOUTH ST. VRAIN NO. 6           | PICNIC SITE           |
| Boulder         | ST. VRAIN MOUNTAIN              | TRAILHEAD             |
| Boulder         | SUGARLOAF MTN                   | TRAILHEAD             |
| Boulder         | UPPER LEFTHAND                  | DAY USE AREA          |
| Boulder         | WEST MAGNOLIA CA                | CAMPING AREA          |
| Boulder         | WEST MAGNOLIA TH                | TRAILHEAD             |
| Boulder         | WINIGER RIDGE                   | CAMPING AREA          |
| Canyon Lakes    | ANSEL WATROUS                   | CAMPGROUND            |
| Canyon Lakes    | ARROWHEAD LODGE                 | INTERPRETIVE SITE     |
| Canyon Lakes    | ASPEN GLEN                      | CAMPGROUND            |
| Canyon Lakes    | BALD MOUNTAIN                   | TRAILHEAD             |
| Canyon Lakes    | BEAVER CREEK                    | TRAILHEAD             |
| Canyon Lakes    | BEAVER CREEK/ FISH CREEK        | TRAILHEAD             |
| Canyon Lakes    | BELLAIRE LAKE CG                | CAMPGROUND            |
| Canyon Lakes    | BELLAIRE LAKE PA                | PICNIC SITE           |
| Canyon Lakes    | BENNETT CREEK                   | PICNIC SITE           |
| Canyon Lakes    | BIG BEND CG                     | CAMPGROUND            |
| Canyon Lakes    | BIG BEND SHEEP VIEWING STATION  | WILDLIFE VIEWING SITE |
| Canyon Lakes    | BIG SOUTH CG                    | CAMPGROUND            |
| Canyon Lakes    | BIG SOUTH TH                    | TRAILHEAD             |
| Canyon Lakes    | BLUE LAKE                       | TRAILHEAD             |

| RANGER DISTRICT | DEVELOPED RECREATION SITE NAME     | SITE TYPE         |
|-----------------|------------------------------------|-------------------|
| Canyon Lakes    | BRIDGES RIVER ACCESS (PUT-IN)      | BOATING SITE      |
| Canyon Lakes    | BRIDGES RIVER ACCESS (TAKE-OUT)    | BOATING SITE      |
| Canyon Lakes    | BROWNS LAKE                        | TRAILHEAD         |
| Canyon Lakes    | BROWNS PARK                        | CAMPGROUND        |
| Canyon Lakes    | CAMERON PASS                       | PICNIC SITE       |
| Canyon Lakes    | CENTURY PARK                       | PICNIC SITE       |
| Canyon Lakes    | CHAMBERS LAKE BS                   | BOATING SITE      |
| Canyon Lakes    | CHAMBERS LAKE CG                   | CAMPGROUND        |
| Canyon Lakes    | CHAMBERS LAKE PA                   | PICNIC SITE       |
| Canyon Lakes    | CORRAL CREEK                       | TRAILHEAD         |
| Canyon Lakes    | CREEDMORE LAKE                     | FISHING SITE      |
| Canyon Lakes    | CROSIER MOUNTAIN GARDEN GATE       | TRAILHEAD         |
| Canyon Lakes    | CROSIER MOUNTAIN GLEN HEAVEN       | TRAILHEAD         |
| Canyon Lakes    | CROSIER MOUNTAIN RAINBOW           | TRAILHEAD         |
| Canyon Lakes    | DADD GULCH                         | TRAILHEAD         |
| Canyon Lakes    | DEAD DEER RIVER ACCESS (PUT-IN)    | BOATING SITE      |
| Canyon Lakes    | DEADMAN LOOKOUT                    | INTERPRETIVE SITE |
| Canyon Lakes    | DIAMOND ROCK                       | PICNIC SITE       |
| Canyon Lakes    | DONNER PASS - BALLARD ROAD         | TRAILHEAD         |
| Canyon Lakes    | DONNER PASS - BUCKHORN ROAD        | TRAILHEAD         |
| Canyon Lakes    | DOWDY LAKE BS                      | BOATING SITE      |
| Canyon Lakes    | DOWDY LAKE CG                      | CAMPGROUND        |
| Canyon Lakes    | DOWDY LAKE PA                      | PICNIC SITE       |
| Canyon Lakes    | DUNRAVEN                           | TRAILHEAD         |
| Canyon Lakes    | DUTCH GEORGE                       | CAMPGROUND        |
| Canyon Lakes    | EGGERS                             | FISHING SITE      |
| Canyon Lakes    | ELKHORN CREEK                      | TRAILHEAD         |
| Canyon Lakes    | EMMALINE LAKE                      | TRAILHEAD         |
| Canyon Lakes    | FILTER PLANT RIVER ACCESS (PUT-IN) | BOATING SITE      |
| Canyon Lakes    | FISH CREEK                         | PICNIC SITE       |
| Canyon Lakes    | FISH CREEK                         | TRAILHEAD         |
| Canyon Lakes    | FLOWERS                            | TRAILHEAD         |
| Canyon Lakes    | GRANDVIEW                          | CAMPGROUND        |
| Canyon Lakes    | GREEN RIDGE/LOST LAKE              | TRAILHEAD         |
| Canyon Lakes    | GREYROCK                           | TRAILHEAD         |
| Canyon Lakes    | HEWLETT GULCH                      | TRAILHEAD         |
| Canyon Lakes    | HOME MORaine GEOLOGICAL SITE       | INTERPRETIVE SITE |
| Canyon Lakes    | IDLEWILDE                          | FISHING SITE      |
| Canyon Lakes    | INDIAN MEADOWS                     | FISHING SITE      |
| Canyon Lakes    | JACKS GULCH CG                     | CAMPGROUND        |
| Canyon Lakes    | JACKS GULCH GCG                    | GROUP CAMPGROUND  |
| Canyon Lakes    | JACKS GULCH TH                     | TRAILHEAD         |
| Canyon Lakes    | JOE WRIGHT                         | FISHING SITE      |

| RANGER DISTRICT | DEVELOPED RECREATION SITE NAME           | SITE TYPE        |
|-----------------|--|------------------|
| Canyon Lakes    | KELLY FLATS                              | CAMPGROUND       |
| Canyon Lakes    | KELLY FLATS                              | TRAILHEAD        |
| Canyon Lakes    | KILLPECKER                               | TRAILHEAD        |
| Canyon Lakes    | LA POUVRE PASS                           | TRAILHEAD        |
| Canyon Lakes    | LADY MOON                                | TRAILHEAD        |
| Canyon Lakes    | LILY MOUNTAIN                            | TRAILHEAD        |
| Canyon Lakes    | LINK-MCINTYRE                            | TRAILHEAD        |
| Canyon Lakes    | LION GULCH                               | TRAILHEAD        |
| Canyon Lakes    | LONG DRAW #1                             | FISHING SITE     |
| Canyon Lakes    | LONG DRAW #2                             | FISHING SITE     |
| Canyon Lakes    | LONG DRAW #3                             | FISHING SITE     |
| Canyon Lakes    | LONG DRAW CG                             | CAMPGROUND       |
| Canyon Lakes    | LONG DRAW SP                             | SNOWPARK         |
| Canyon Lakes    | LOST LAKE                                | FISHING SITE     |
| Canyon Lakes    | LOWER NARROWS                            | CAMPGROUND       |
| Canyon Lakes    | MOLLY LAKE                               | TRAILHEAD        |
| Canyon Lakes    | MOUNT MARGARET                           | TRAILHEAD        |
| Canyon Lakes    | MOUNT MCCONNELL                          | TRAILHEAD        |
| Canyon Lakes    | MOUNTAIN PARK CG                         | CAMPGROUND       |
| Canyon Lakes    | MOUNTAIN PARK GCG                        | GROUP CAMPGROUND |
| Canyon Lakes    | MOUNTAIN PARK PA                         | PICNIC SITE      |
| Canyon Lakes    | NORTH FORK POUVRE                        | CAMPGROUND       |
| Canyon Lakes    | NORTH LONE PINE                          | TRAILHEAD        |
| Canyon Lakes    | OUZEL                                    | PICNIC SITE      |
| Canyon Lakes    | PETERSON LAKE                            | TRAILHEAD        |
| Canyon Lakes    | PIERSON PARK                             | TRAILHEAD        |
| Canyon Lakes    | PINEVIEW RIVER ACCESS (PUT-IN, TAKE-OUT) | BOATING SITE     |
| Canyon Lakes    | POUVRE PARK                              | PICNIC SITE      |
| Canyon Lakes    | RAWAH                                    | TRAILHEAD        |
| Canyon Lakes    | ROARING CREEK                            | TRAILHEAD        |
| Canyon Lakes    | SIGNAL MOUNTAIN                          | TRAILHEAD        |
| Canyon Lakes    | SLEEPING ELEPHANT                        | CAMPGROUND       |
| Canyon Lakes    | STEVENS GULCH                            | PICNIC SITE      |
| Canyon Lakes    | STORMY PEAKS                             | TRAILHEAD        |
| Canyon Lakes    | STOVE PRAIRIE LANDING                    | CAMPGROUND       |
| Canyon Lakes    | STUB CREEK                               | LOOKOUT/CABIN    |
| Canyon Lakes    | TOM BENNETT                              | CAMPGROUND       |
| Canyon Lakes    | TRAP PARK                                | TRAILHEAD        |
| Canyon Lakes    | TUNNEL CG                                | CAMPGROUND       |
| Canyon Lakes    | TUNNEL PA                                | PICNIC SITE      |
| Canyon Lakes    | UPPER LANDING                            | PICNIC SITE      |
| Canyon Lakes    | UPPER NARROWS                            | CAMPGROUND       |

| RANGER DISTRICT | DEVELOPED RECREATION SITE NAME      | SITE TYPE                           |
|-----------------|-------------------------------------|-------------------------------------|
| Canyon Lakes    | WEST BRANCH                         | TRAILHEAD                           |
| Canyon Lakes    | WEST LAKE CG                        | CAMPGROUND                          |
| Canyon Lakes    | WEST LAKE PA                        | PICNIC SITE                         |
| Canyon Lakes    | YOUNG GULCH                         | TRAILHEAD                           |
| Canyon Lakes    | ZIMMERMAN                           | TRAILHEAD                           |
| Canyon Lakes    | ZIMMERMAN LAKE                      | TRAILHEAD                           |
| Clear Creek     | ARAPAHO SPRINGS                     | INTERPRETIVE SITE                   |
| Clear Creek     | BARBOUR FORKS                       | TRAILHEAD                           |
| Clear Creek     | BARD CREEK                          | TRAILHEAD                           |
| Clear Creek     | BEAVER BROOK                        | TRAILHEAD                           |
| Clear Creek     | BERTHOUD PASS                       | TRAILHEAD                           |
| Clear Creek     | BIERSTADT                           | TRAILHEAD                           |
| Clear Creek     | BIG BEND PA                         | PICNIC SITE                         |
| Clear Creek     | CAPTAIN MOUNTAIN (ECHO LAKE CG)     | TRAILHEAD                           |
| Clear Creek     | CHICAGO FORKS                       | PICNIC SITE                         |
| Clear Creek     | CHIEF MOUNTAIN                      | TRAILHEAD                           |
| Clear Creek     | CLEAR CREEK                         | PICNIC SITE                         |
| Clear Creek     | CLEAR LAKE                          | CAMPGROUND                          |
| Clear Creek     | CLEAR LAKE                          | FISHING SITE                        |
| Clear Creek     | CLOUDLAND                           | PICNIC SITE                         |
| Clear Creek     | COLD SPRINGS CG                     | CAMPGROUND                          |
| Clear Creek     | COLD SPRINGS PA                     | PICNIC SITE                         |
| Clear Creek     | COLUMBINE                           | CAMPGROUND                          |
| Clear Creek     | CUB CREEK                           | TRAILHEAD                           |
| Clear Creek     | DEVILS NOSE DEVELOPED SHOOTING AREA | TARGET RANGE                        |
| Clear Creek     | EAST BLT                            | TRAILHEAD                           |
| Clear Creek     | ECHO LAKE CG                        | CAMPGROUND                          |
| Clear Creek     | ECHO LAKE TH                        | TRAILHEAD                           |
| Clear Creek     | GRAYS PEAK                          | TRAILHEAD                           |
| Clear Creek     | GUANELLA PASS CG                    | CAMPGROUND                          |
| Clear Creek     | GUANELLA PASS TH                    | TRAILHEAD                           |
| Clear Creek     | HASSEL LAKE                         | TRAILHEAD                           |
| Clear Creek     | HELLS HOLE CG                       | CAMPGROUND                          |
| Clear Creek     | HELLS HOLE TH                       | TRAILHEAD                           |
| Clear Creek     | HERMAN GULCH                        | TRAILHEAD                           |
| Clear Creek     | JONES PASS                          | TRAILHEAD                           |
| Clear Creek     | JUNIPER PASS                        | PICNIC SITE                         |
| Clear Creek     | LOVELAND PASS                       | TRAILHEAD                           |
| Clear Creek     | MAXWELL FALLS LOWER                 | TRAILHEAD                           |
| Clear Creek     | MAXWELL FALLS UPPER                 | TRAILHEAD                           |
| Clear Creek     | MIZPAH                              | CAMPGROUND                          |
| Clear Creek     | MOUNT GOLIATH NATURAL AREA          | INTERPRETIVE VISITOR CENTER (MINOR) |

| RANGER DISTRICT | DEVELOPED RECREATION SITE NAME | SITE TYPE         |
|-----------------|--------------------------------|-------------------|
| Clear Creek     | PICKLE GULCH GCG               | GROUP CAMPGROUND  |
| Clear Creek     | PICKLE GULCH GPA               | GROUP PICNIC SITE |
| Clear Creek     | PONDER POINT                   | PICNIC SITE       |
| Clear Creek     | SILVER DOLLAR LAKE             | TRAILHEAD         |
| Clear Creek     | SOUTH CHICAGO CREEK            | TRAILHEAD         |
| Clear Creek     | SOUTH CLEAR CREEK CG           | CAMPGROUND        |
| Clear Creek     | SQUAW MOUNTAIN FIRE LOOKOUT    | LOOKOUT/CABIN     |
| Clear Creek     | SUMMIT LAKE FLATS              | TRAILHEAD         |
| Clear Creek     | SUMMIT OF MOUNT EVANS          | INTERPRETIVE SITE |
| Clear Creek     | UPPER GOLIATH                  | TRAILHEAD         |
| Clear Creek     | WEST BLT                       | TRAILHEAD         |
| Clear Creek     | WEST CHICAGO CREEK             | CAMPGROUND        |
| Clear Creek     | WITTER GULCH                   | TRAILHEAD         |
| Sulphur         | AA BAR RANCH                   | GROUP PICNIC SITE |
| Sulphur         | ARAPAHO BAY                    | CAMPGROUND        |
| Sulphur         | BILL MILLER                    | TRAILHEAD         |
| Sulphur         | BOWEN GULCH                    | TRAILHEAD         |
| Sulphur         | BULL MOUNTAIN                  | CAMPING AREA      |
| Sulphur         | BYERS CREEK                    | CAMPGROUND        |
| Sulphur         | BYERS PEAK                     | TRAILHEAD         |
| Sulphur         | CUTTHROAT BAY                  | GROUP CAMPGROUND  |
| Sulphur         | DARLING CREEK                  | TRAILHEAD         |
| Sulphur         | DEADHORSE                      | TRAILHEAD         |
| Sulphur         | DENVER CREEK                   | CAMPGROUND        |
| Sulphur         | DEVILS THUMB PARK              | TRAILHEAD         |
| Sulphur         | DOE CREEK                      | TRAILHEAD         |
| Sulphur         | EAST SHORE                     | TRAILHEAD         |
| Sulphur         | ELK MEADOW                     | TRAILHEAD         |
| Sulphur         | ELK MEADOWS                    | TRAILHEAD         |
| Sulphur         | ELK MOUNTAIN                   | TRAILHEAD         |
| Sulphur         | FOOL CREEK                     | TRAILHEAD         |
| Sulphur         | GREEN RIDGE BS                 | BOATING SITE      |
| Sulphur         | GREEN RIDGE CG                 | CAMPGROUND        |
| Sulphur         | HILLTOP BOAT RAMP              | BOATING SITE      |
| Sulphur         | HORSESHOE                      | CAMPGROUND        |
| Sulphur         | IDLEGLLEN                      | TRAILHEAD         |
| Sulphur         | IDLEWILD                       | CAMPGROUND        |
| Sulphur         | ILLINOIS PASS                  | TRAILHEAD         |
| Sulphur         | JIM CREEK                      | TRAILHEAD         |
| Sulphur         | JUNCO LAKE                     | TRAILHEAD         |
| Sulphur         | KAUFMAN CREEK                  | TRAILHEAD         |
| Sulphur         | KEYSER RIDGE                   | TRAILHEAD         |
| Sulphur         | KINNEY CREEK                   | TRAILHEAD         |

| RANGER DISTRICT | DEVELOPED RECREATION SITE NAME | SITE TYPE             |
|-----------------|--------------------------------|-----------------------|
| Sulphur         | LAKE EVELYN                    | TRAILHEAD             |
| Sulphur         | LAKE GRANBY OVERLOOK           | INTERPRETIVE SITE     |
| Sulphur         | LELAND                         | TRAILHEAD             |
| Sulphur         | LOST LAKE                      | TRAILHEAD             |
| Sulphur         | LOWER CREEKSIDE                | TRAILHEAD             |
| Sulphur         | MEADOW CREEK RESERVOIR         | FISHING SITE          |
| Sulphur         | MIDLAND                        | GROUP CAMPGROUND      |
| Sulphur         | MONARCH LAKE                   | TRAILHEAD             |
| Sulphur         | MOUNT NYSTROM                  | TRAILHEAD             |
| Sulphur         | NORTH SUPPLY                   | TRAILHEAD             |
| Sulphur         | OSPREY WVS                     | WILDLIFE VIEWING SITE |
| Sulphur         | PARKVIEW                       | TRAILHEAD             |
| Sulphur         | PINE BEACH                     | PICNIC SITE           |
| Sulphur         | POINT PARK                     | PICNIC SITE           |
| Sulphur         | PTARMIGAN POND                 | FISHING SITE          |
| Sulphur         | QUINETTE POINT                 | PICNIC SITE           |
| Sulphur         | RAINBOW BAY                    | PICNIC SITE           |
| Sulphur         | ROARING FORK                   | TRAILHEAD             |
| Sulphur         | ROARING FORK BOAT RAMP         | BOATING SITE          |
| Sulphur         | ROBBERS ROOST                  | CAMPGROUND            |
| Sulphur         | ROGERS PASS                    | TRAILHEAD             |
| Sulphur         | ROGERS PASS/RIFLESIGHT         | TRAILHEAD             |
| Sulphur         | ROLLINS PASS                   | TRAILHEAD             |
| Sulphur         | SAWMILL GULCH                  | CAMPGROUND            |
| Sulphur         | SECOND CREEK                   | TRAILHEAD             |
| Sulphur         | SHADOW MOUNTAIN                | PICNIC SITE           |
| Sulphur         | SHADOW MOUNTAIN DAM            | TRAILHEAD             |
| Sulphur         | SOUTH FORK                     | CAMPGROUND            |
| Sulphur         | SOUTH FORK                     | TRAILHEAD             |
| Sulphur         | ST. LOUIS CREEK                | CAMPGROUND            |
| Sulphur         | ST. LOUIS CREEK                | TRAILHEAD             |
| Sulphur         | ST. LOUIS LAKE                 | TRAILHEAD             |
| Sulphur         | STILLWATER BS                  | BOATING SITE          |
| Sulphur         | STILLWATER CG                  | CAMPGROUND            |
| Sulphur         | SUGARLOAF                      | CAMPGROUND            |
| Sulphur         | SUNSET POINT BS                | BOATING SITE          |
| Sulphur         | SUNSET POINT CG                | CAMPGROUND            |
| Sulphur         | SUPPLY CREEK                   | TRAILHEAD             |
| Sulphur         | TRAIL CREEK - CO125            | TRAILHEAD             |
| Sulphur         | TWIN BRIDGES                   | TRAILHEAD             |
| Sulphur         | UTE PASS                       | TRAILHEAD             |
| Sulphur         | UTE PEAK                       | TRAILHEAD             |
| Sulphur         | VASQUEZ PEAK                   | TRAILHEAD             |

| RANGER DISTRICT | DEVELOPED RECREATION SITE NAME | SITE TYPE    |
|-----------------|--------------------------------|--------------|
| Sulphur         | WILLIAMS FORK                  | TRAILHEAD    |
| Sulphur         | WILLIAMS FORK TH               | TRAILHEAD    |
| Sulphur         | WILLIAMS PEAK                  | TRAILHEAD    |
| Sulphur         | WILLOW CREEK                   | BOATING SITE |
| Sulphur         | WILLOW CREEK                   | CAMPGROUND   |
| Sulphur         | WILLOW CREEK                   | FISHING SITE |
| Sulphur         | WILLOW CREEK CANAL             | PICNIC SITE  |
| Sulphur         | WILLOW CREEK PASS              | TRAILHEAD    |

**2) Additional Specified Locations**

These additional Described Areas have been identified by the US Forest Service as locations where conflict with bears and people are known to occur outside of developed recreation sites.

| RANGER DISTRICT | AREA                                 |
|-----------------|--------------------------------------|
| Boulder RD      | Lost Lake Area                       |
|                 | Diamond Lake Backcountry Travel Zone |
|                 | Jasper Lake Backcountry Travel Zone  |
|                 |                                      |
| Canyon Lakes RD | No additional identified areas       |
|                 |                                      |
| Clear Creek RD  | No additional identified areas       |
|                 |                                      |
|                 |                                      |
| Sulphur RD      | No additional identified areas       |
|                 |                                      |
|                 |                                      |

**3) National Forest System Lands within 300 feet of all open roads**

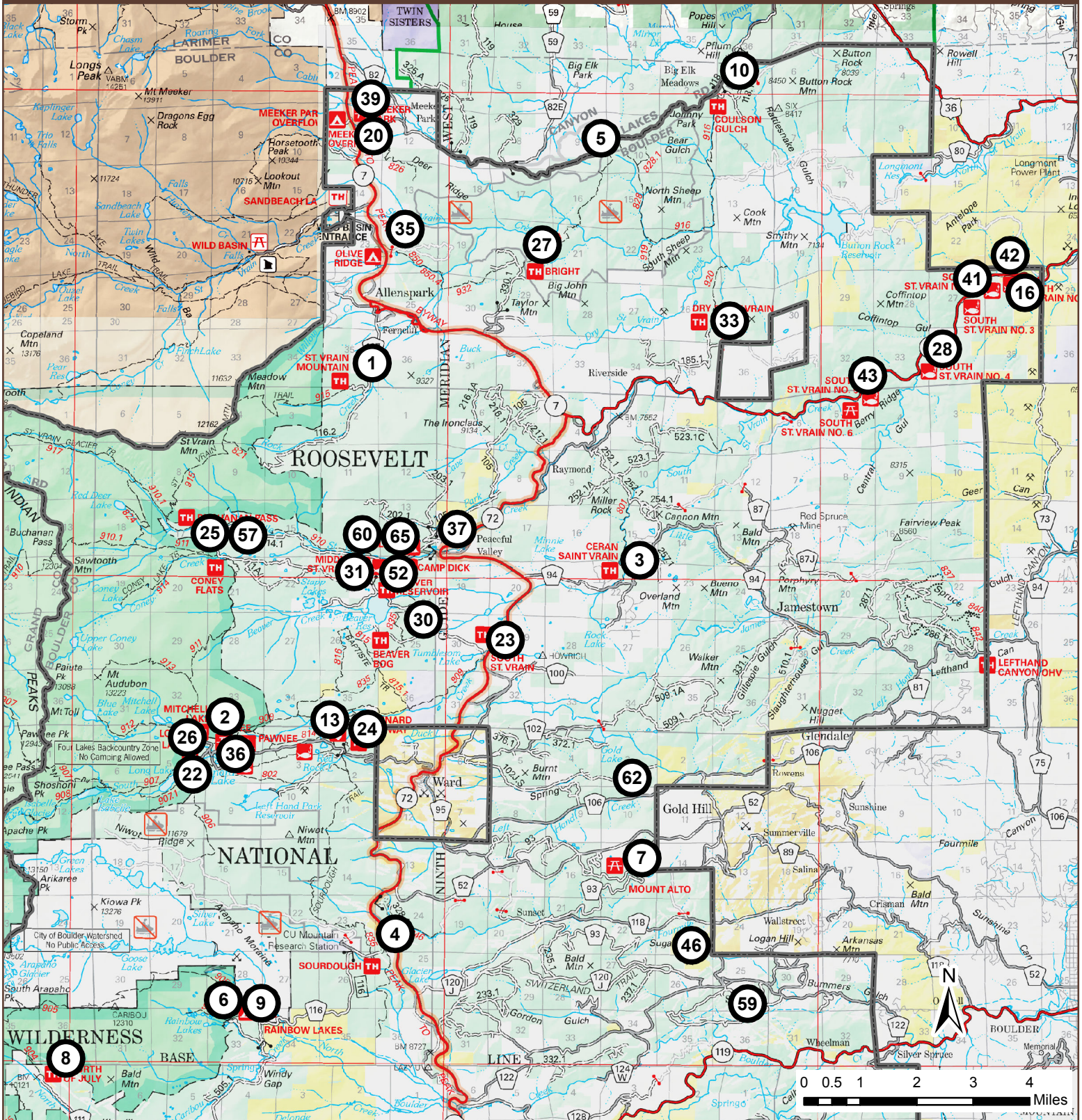
The Described Area also includes all National Forest System lands within 300 feet of the centerline of all open public roads (as indicated on the Motor Vehicle Use Map) which cross National Forest System managed lands on the Boulder, Canyon Lakes, Clear Creek, and Sulphur Ranger Districts of the Arapaho and Roosevelt National Forests within the State of Colorado.





# Boulder Ranger District Food Storage Order Sites

Arapaho and Roosevelt  
National Forests  
Region 02



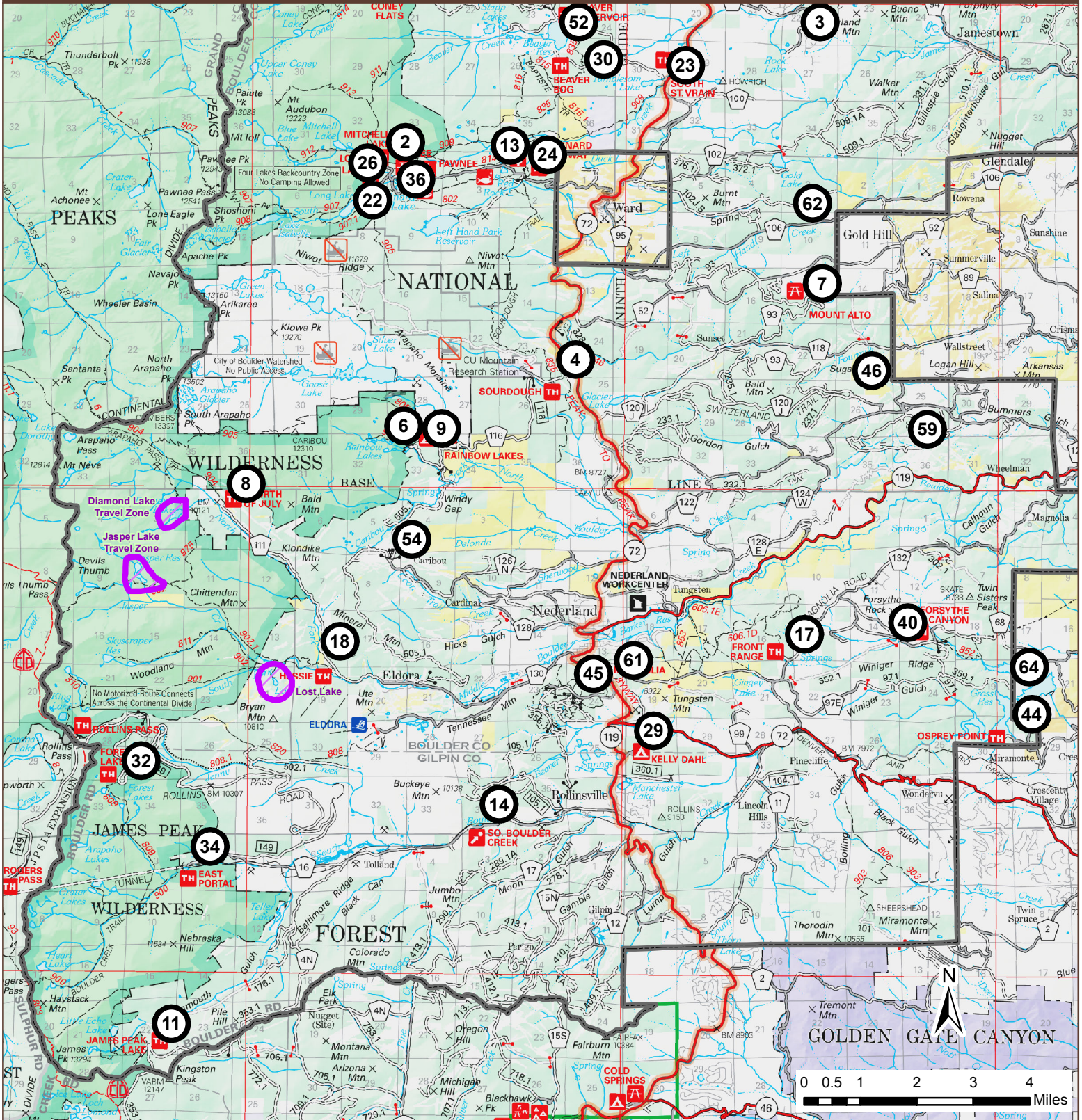
- |                       |                           |                           |                           |                           |                                    |
|-----------------------|---------------------------|---------------------------|---------------------------|---------------------------|------------------------------------|
| 1) St. Vrain Mountain | 8) Fourth Of July         | 19) Brainard Lake Day Use | 26) Long Lake             | 36) Mitchell Creek        | 46) Sugarloaf Mtn                  |
| 2) Mitchell Lake      | 9) Rainbow Lakes          | 20) Meeker Park           | 27) Bright                | 37) Peaceful Valley       | 52) Coney Flats                    |
| 3) Ceran St. Vrain    | 10) Coulson Gulch         | 21) Arickaree             | 28) South St. Vrain No. 4 | 38) Camp Dick             | 57) Beaver Creek                   |
| 4) Sourdough          | 12) Brainard Lake         | 22) Niwot                 | 30) Beaver Bog            | 39) Meeker Park           | 59) Dream Canyon                   |
| 5) Bright Extension   | 13) Red Rock Lake         | 23) South St. Vrain       | 31) Middle St. Vrain      | 41) South St. Vrain No. 3 | 60) Buchanan Pass                  |
| 6) Rainbow Lakes      | 15) Pawnee                | 24) Brainard Lake Gateway | 33) Dry St. Vrain         | 42) South St. Vrain No. 2 | 62) Lower Lefthand                 |
| 7) Mount Alto         | 16) South St. Vrain No. 1 | 25) Coney Creek           | 35) Olive Ridge           | 43) South St. Vrain No. 6 | 65) Middle St. Vrain/Buchanan Pass |

This product is reproduced from geospatial information prepared by the U.S. Department of Agriculture, Forest Service. GIS data and product accuracy may vary. They may be developed from sources of differing accuracy, accurate only at certain scales, based on modeling or interpretation, incomplete while being created or revised, etc. Using GIS products for purposes other than those for which they were created, may yield inaccurate or misleading results. The Forest Service reserves the right to correct, update, modify, or replace. GIS products based on new inventories, new or revised and if necessary in conjunction with other federal, state or local public agencies or the public in general as required by policy or regulation. Previous recipients of the products may not be notified unless required by policy or regulation. For more information concerning this map, contact the Arapaho & Roosevelt National Forests: 2150 Centre Ave, Building E, Fort Collins, CO 80526.



# Boulder Ranger District Food Storage Order Sites

Arapaho and Roosevelt  
National Forests  
Region 02



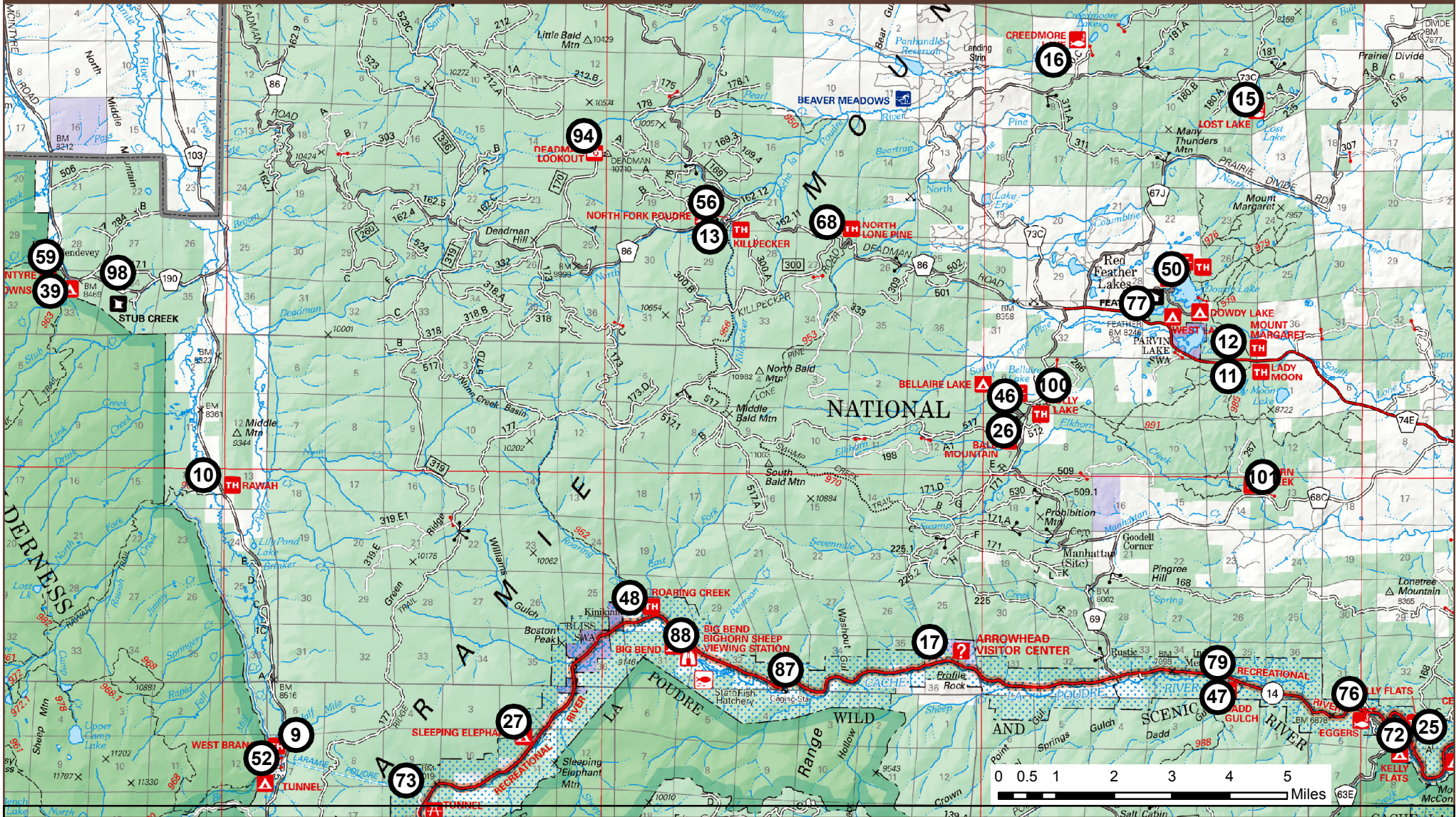
|                    |                         |                           |                           |                     |                        |
|--------------------|-------------------------|---------------------------|---------------------------|---------------------|------------------------|
| 2) Mitchell Lake   | 9) Rainbow Lakes        | 17) Front Range           | 24) Brainerd Lake Gateway | 36) Mitchell Creek  | 54) Caribou 5-Points   |
| 3) Ceran St. Vrain | 11) James Peak Lake     | 18) Hesse                 | 26) Long Lake             | 40) Forsythe Canyon | 59) Dream Canyon       |
| 4) Sourdough       | 12) Brainerd Lake       | 19) Brainerd Lake Day Use | 29) Kelly Dahl            | 44) Osprey          | 61) Magnolia           |
| 6) Rainbow Lakes   | 13) Red Rock Lake       | 21) Arickaree             | 30) Beaver Bog            | 45) West Magnolia   | 62) Lower Lefthand     |
| 7) Mount Alto      | 14) South Boulder Creek | 22) Niwot                 | 32) Forest Lakes          | 46) Sugarloaf Mtn   | 64) East Winiger Ridge |
| 8) Fourth Of July  | 15) Pawnee              | 23) South St. Vrain       | 34) East Portal           | 52) Coney Flats     | Food Storage Areas     |

This product is reproduced from geospatial information prepared by the U.S. Department of Agriculture, Forest Service. GIS data and product accuracy may vary. They may be developed from sources of differing accuracy, accurate only at certain scales, based on modeling or interpretation, incomplete while being created or revised, etc. Using GIS products for purposes other than those for which they were created, may yield inaccurate or misleading results. The Forest Service reserves the right to correct, update, modify, or replace, GIS products based on new inventories, new or revised and if necessary in conjunction with other federal, state or local public agencies or the public in general as required by policy or regulation. Previous recipients of the products may not be notified unless required by policy or regulation. For more information concerning this map, contact the Arapaho & Roosevelt National Forests: 2150 Centre Ave, Building E, Fort Collins, CO 80526.



# Canyon Lakes Ranger District Food Storage Order Sites

Arapaho and Roosevelt  
National Forests  
Region 02



- |                    |                     |                       |                   |                       |                     |                                    |                    |
|--------------------|---------------------|-----------------------|-------------------|-----------------------|---------------------|------------------------------------|--------------------|
| 9) West Branch     | 15) Lost Lake       | 26) Bald Mountain     | 43) West Lake     | 48) Roaring Creek     | 68) North Lone Pine | 79) Indian Meadows                 | 100) Molly Lake    |
| 10) Rawah          | 16) Creedmore Lake  | 27) Sleeping Elephant | 44) Dowdy Lake    | 50) Dowdy Lake        | 72) Kelly Flats     | 87) Home Moraine Geological Site   | 101) Elkhorn Creek |
| 11) Mount Margaret | 17) Arrowhead Lodge | 29) Big Bend          | 45) Dowdy Lake    | 52) Tunnel            | 73) Tunnel          | 88) Big Bend Sheep Viewing Station |                    |
| 12) Lady Moon      | 18) Bellaire Lake   | 32) Mountain Park     | 46) Bellaire Lake | 56) North Fork Poudre | 76) Eggers          | 94) Deadman Lookout                |                    |
| 13) Killpecker     | 25) Kelly Flats     | 39) Browns Park       | 47) Dadd Gulch    | 59) Link-Mcintyre     | 77) West Lake       | 98) Stub Creek                     |                    |

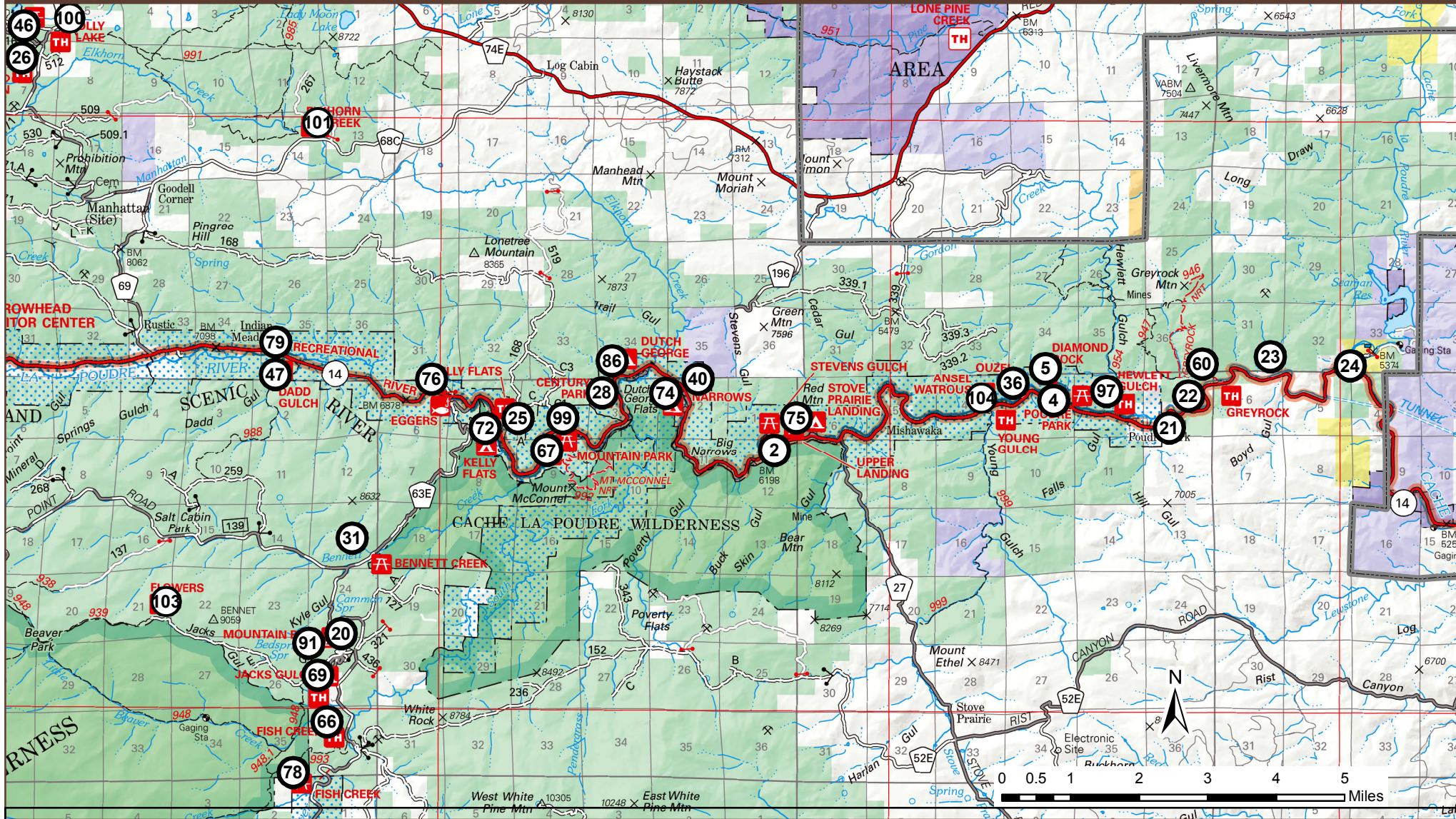


This product is reproduced from geospatial information prepared by the U.S. Department of Agriculture, Forest Service. GIS data and product accuracy may vary. They may be developed from sources of differing accuracy, accurate only at certain scales, based on modeling or interpretation, incomplete while being created or revised, etc. Using GIS products for purposes other than those for which they were created, may yield inaccurate or misleading results. The Forest Service reserves the right to correct, update, modify, or replace, GIS products based on new inventories, new or revised and if necessary in conjunction with other federal, state or local public agencies or the public in general as required by policy or regulation. Previous recipients of the products may not be notified unless required by policy or regulation. For more information concerning this map, contact the Arapaho & Roosevelt National Forests: 2150 Centre Ave, Building E Fort Collins, CO 80526.



# Canyon Lakes Ranger District Food Storage Order Sites

Arapaho and Roosevelt  
National Forests  
Region 02



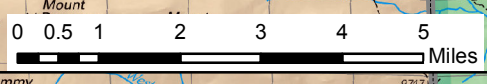
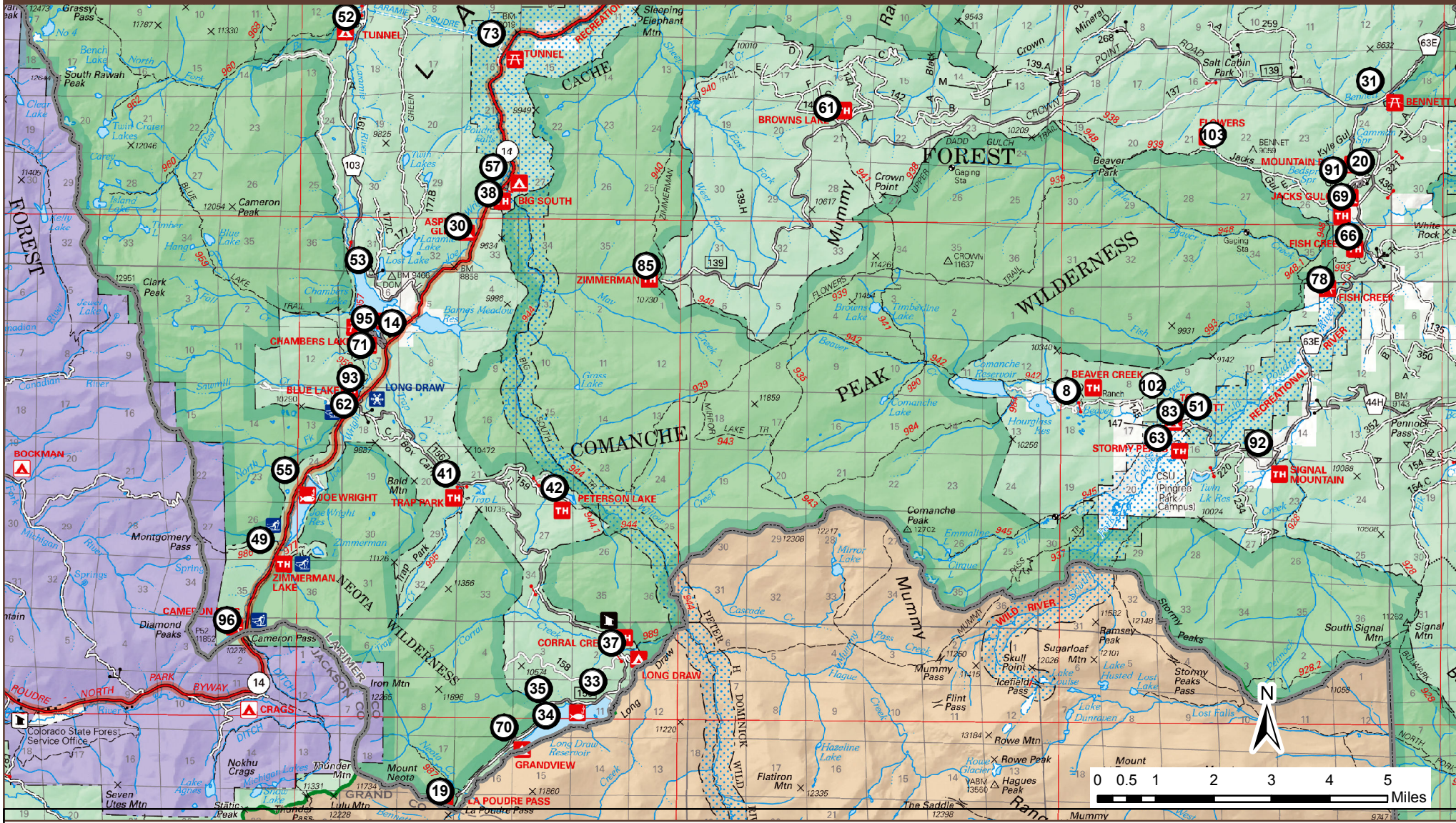
- |                   |  |                   |                   |                   |                           |                     |                             |
|-------------------|--|-------------------|-------------------|-------------------|---------------------------|---------------------|-----------------------------|
| 1) Stevens Gulch  | 20) Jacks Gulch                              | 25) Kelly Flats   | 36) Ansel Watrous | 58) Mountain Park | 72) Kelly Flats           | 79) Indian Meadows  | 100) Molly Lake             |
| 2) Upper Landing  | 21) Pineview River Access (Put-In, Take-Out) | 26) Bald Mountain | 40) Upper Narrows | 60) Greyrock      | 74) Lower Narrows         | 86) Dutch George    | 101) Elkhorn Creek          |
| 3) Ouzel          | 22) Bridges River Access (Put-In)            | 28) Century Park  | 46) Bellaire Lake | 66) Fish Creek    | 75) Stove Prairie Landing | 91) Jacks Gulch     | 103) Flowers                |
| 4) Poudre Park    | 23) Bridges River Access (Take-Out)          | 31) Bennett Creek | 47) Dadd Gulch    | 67) Mountain Park | 76) Eggers                | 97) Hewlett Gulch   | 104) Dead Deer River Access |
| 5) Diamond Rock   | 24) Filter Plant River Access (Put-In)       | 32) Mountain Park | 54) Young Gulch   | 69) Jacks Gulch   | 78) Fish Creek            | 99) Mount Mcconnell |                             |
| 18) Bellaire Lake |  |                   |                   |                   |                           |                     |                             |

This product is reproduced from geospatial information prepared by the U.S. Department of Agriculture, Forest Service. GIS data and product accuracy may vary. They may be developed from sources of differing accuracy, accurate only at certain scales, based on modeling or interpretation, incomplete while being created or revised, etc. Using GIS products for purposes other than those for which they were created, may yield inaccurate or misleading results. The Forest Service reserves the right to correct, update, modify, or replace, GIS products based on new inventories, new or revised and if necessary in conjunction with other federal, state or local public agencies or the public in general as required by policy or regulation. Previous recipients of the products may not be notified unless required by policy or regulation. For more information concerning this map, contact the Arapaho & Roosevelt National Forests: 2150 Centre Ave, Building E Fort Collins, CO 80526.



# Canyon Lakes Ranger District Food Storage Order Sites

Arapaho and Roosevelt  
National Forests  
Region 02



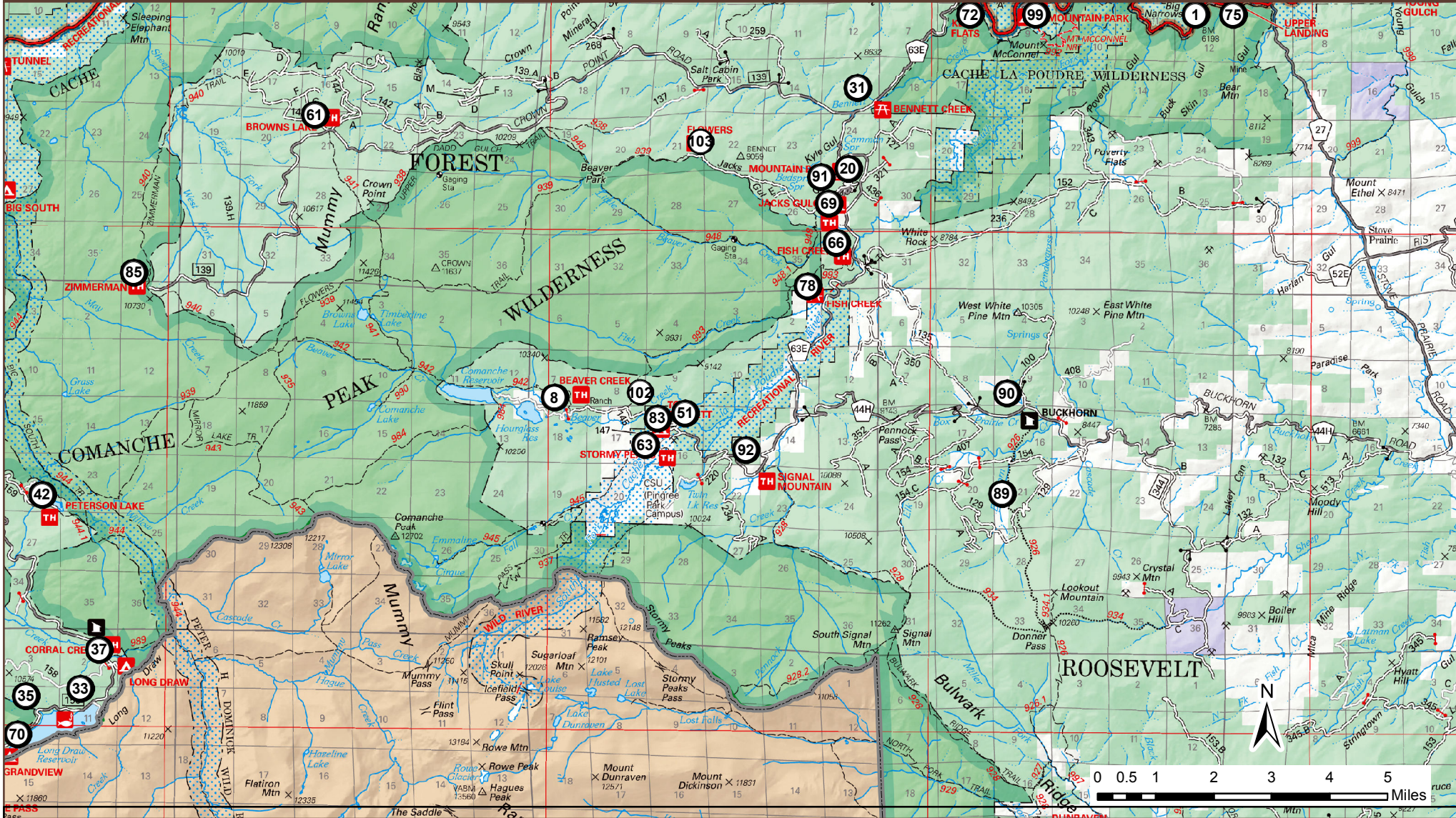
- |                            |                   |                    |                           |                  |                   |                     |                   |
|----------------------------|-------------------|--------------------|---------------------------|------------------|-------------------|---------------------|-------------------|
| 7) Corral Creek            | 20) Jacks Gulch   | 38) Big South      | 52) Tunnel                | 62) Blue Lake    | 71) Chambers Lake | 91) Jacks Gulch     | 102) Beaver Creek |
| 8) Beaver Creek/Fish Creek | 30) Aspen Glen    | 41) Trap Park      | 53) Green Ridge/Lost Lake | 63) Stormy Peaks | 73) Tunnel        | 92) Signal Mountain | 103) Flowers      |
| 9) West Branch             | 31) Bennett Creek | 42) Peterson Lake  | 55) Joe Wright            | 66) Fish Creek   | 78) Fish Creek    | 93) Long Draw       |                   |
| 14) Chambers Lake          | 35) Long Draw #3  | 49) Zimmerman Lake | 57) Big South             | 69) Jacks Gulch  | 83) Emmaline Lake | 95) Chambers Lake   |                   |
| 19) La Poudre Pass         | 37) Long Draw     | 51) Tom Bennett    | 61) Browns Lake           | 70) Grandview    | 85) Zimmerman     | 96) Cameron Pass    |                   |

This product is reproduced from geospatial information prepared by the U.S. Department of Agriculture, Forest Service. GIS data and product accuracy may vary. They may be developed from sources of differing accuracy, accurate only at certain scales, based on modeling or interpretation, incomplete while being created or revised, etc. Using GIS products for purposes other than those for which they were created, may yield inaccurate or misleading results. The Forest Service reserves the right to correct, update, modify, or replace, GIS products based on new inventories, new or revised and if necessary in conjunction with other federal, state or local public agencies or the public in general as required by policy or regulation. Previous recipients of the products may not be notified unless required by policy or regulation. For more information concerning this map, contact the Arapaho & Roosevelt National Forests: 2150 Centre Ave, Building E Fort Collins, CO 80526.



# Canyon Lakes Ranger District Food Storage Order Sites

Arapaho and Roosevelt  
National Forests  
Region 02



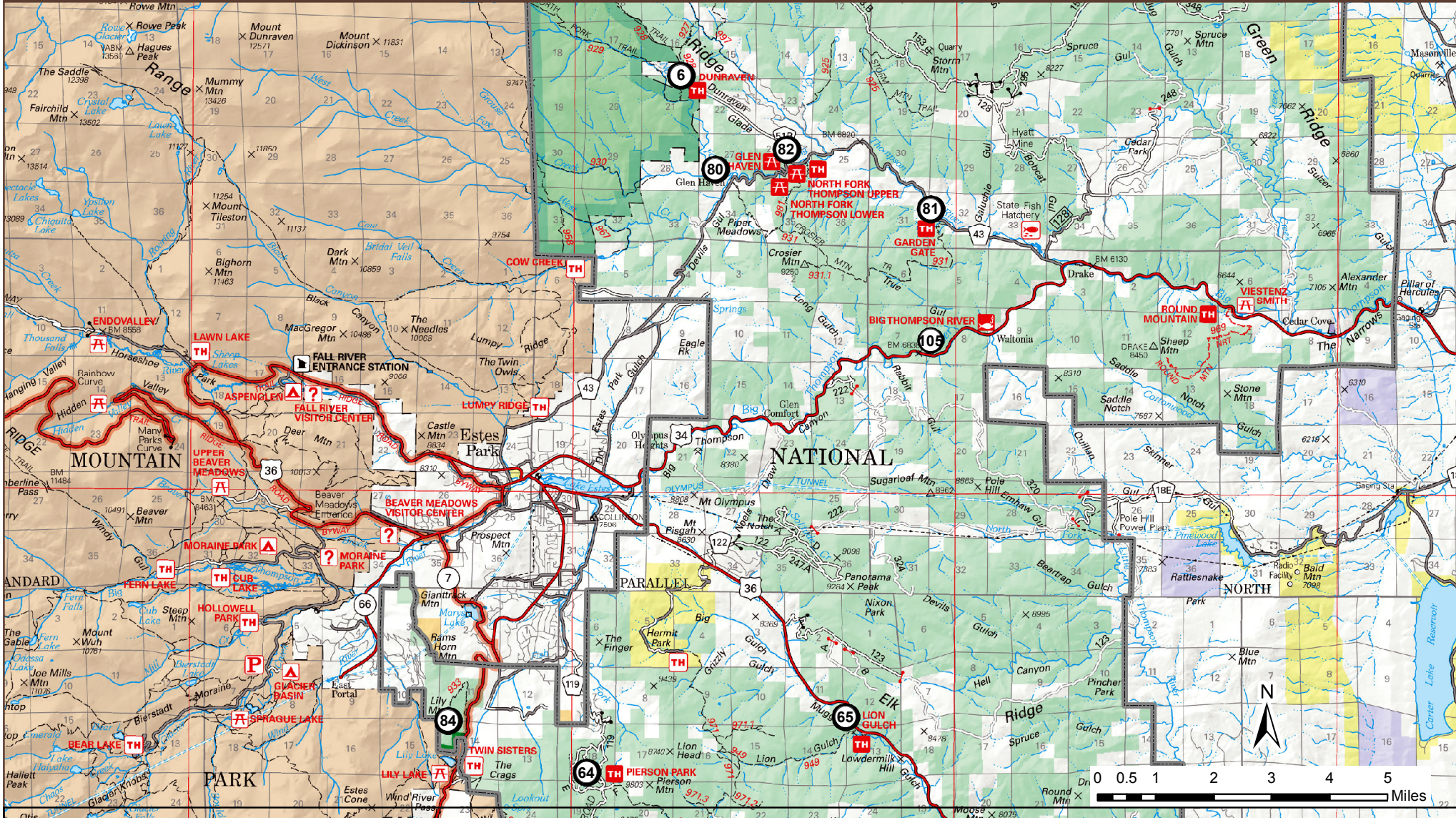
- |                            |                   |                   |                           |                                 |                   |
|----------------------------|-------------------|-------------------|---------------------------|---------------------------------|-------------------|
| 1) Stevens Gulch           | 31) Bennett Creek | 58) Mountain Park | 70) Grandview             | 89) Donner Pass - Ballard Road  | 102) Beaver Creek |
| 2) Upper Landing           | 32) Mountain Park | 61) Browns Lake   | 72) Kelly Flats           | 90) Donner Pass - Buckhorn Road | 103) Flowers      |
| 7) Corral Creek            | 35) Long Draw #3  | 63) Stormy Peaks  | 75) Stove Prairie Landing | 91) Jacks Gulch                 |                   |
| 8) Beaver Creek/Fish Creek | 37) Long Draw     | 66) Fish Creek    | 78) Fish Creek            | 92) Signal Mountain             |                   |
| 20) Jacks Gulch            | 42) Peterson Lake | 67) Mountain Park | 83) Emmaline Lake         | 99) Mount Mcconnell             |                   |
| 25) Kelly Flats            | 51) Tom Bennett   | 69) Jacks Gulch   | 85) Zimmerman             |                                 |                   |

This product is reproduced from geospatial information prepared by the U.S. Department of Agriculture, Forest Service. GIS data and product accuracy may vary. They may be developed from sources of differing accuracy, accurate only at certain scales, based on modeling or interpretation, incomplete while being created or revised, etc. Using GIS products for purposes other than those for which they were created, may yield inaccurate or misleading results. The Forest Service reserves the right to correct, update, modify, or replace, GIS products based on new inventories, new or revised and if necessary in conjunction with other federal, state or local public agencies or the public in general as required by policy or regulation. Previous recipients of the products may not be notified unless required by policy or regulation. For more information concerning this map, contact the Arapaho & Roosevelt National Forests: 2150 Centre Ave, Building E Fort Collins, CO 80526.



# Canyon Lakes Ranger District Food Storage Order Sites

Arapaho and Roosevelt  
National Forests  
Region 02



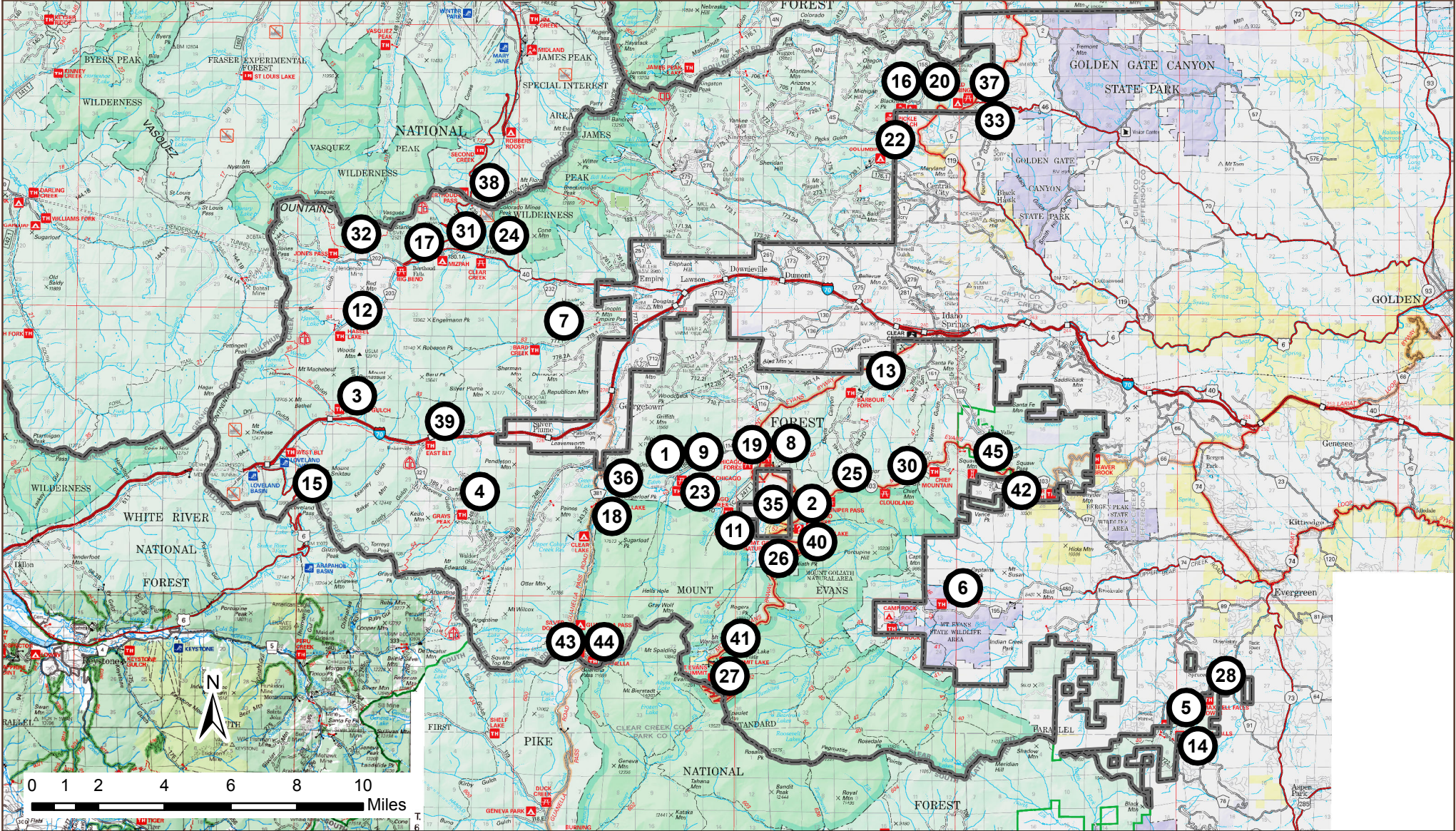
- 6) Dunraven
- 81) Crosier Mountain Garden Gate
- 64) Pierson Park
- 82) Crosier Mountain Rainbow
- 65) Lion Gulch
- 84) Lily Mountain
- 80) Crosier Mountain Glen Heaven

This product is reproduced from geospatial information prepared by the U.S. Department of Agriculture, Forest Service. GIS data and product accuracy may vary. They may be developed from sources of differing accuracy, accurate only at certain scales, based on modeling or interpretation, incomplete while being created or revised, etc. Using GIS products for purposes other than those for which they were created, may yield inaccurate or misleading results. The Forest Service reserves the right to correct, update, modify, or replace, GIS products based on new inventories, new or revised and if necessary in conjunction with other federal, state or local public agencies or the public in general as required by policy or regulation. Previous recipients of the products may not be notified unless required by policy or regulation. For more information concerning this map, contact the Arapaho & Roosevelt National Forests: 2150 Centre Ave, Building E Fort Collins, CO 80526.



# Clear Creek Ranger District Food Storage Order Sites

Arapaho and Roosevelt  
National Forests  
Region 02



- |                                    |                         |                   |                           |                        |                                |                                 |
|------------------------------------|-------------------------|-------------------|---------------------------|------------------------|--------------------------------|---------------------------------|
| 1) Hells Hole                      | 8) Ponder Point         | 15) Loveland Pass | 22) Columbine             | 30) Cloudland          | 37) Cold Springs               | 44) Bierstadt                   |
| 2) Echo Lake                       | 9) West Chicago Creek   | 16) Pickle Gulch  | 23) Hells Hole            | 31) Mizpah             | 38) Berthoud Pass              | 45) Squaw Mountain Fire Lookout |
| 3) Herman Gulch                    | 10) Chief Mountain      | 17) Big Bend      | 24) Clear Creek           | 32) Jones Pass         | 39) East Blt                   | 46) West Blt                    |
| 4) Grays Peak                      | 11) South Chicago Creek | 18) Clear Lake    | 25) Juniper Pass          | 33) Cold Springs       | 40) Mount Goliath Natural Area | 47) Beaver Brook                |
| 5) Cub Creek                       | 12) Hassel Lake         | 19) Chicago Forks | 26) Upper Goliath         | 34) Silver Dollar Lake | 41) Summit Lake Flats          | 48) Witter Gulch                |
| 6) Captain Mountain (Echo Lake Cg) | 13) Barbour Forks       | 20) Pickle Gulch  | 27) Summit Of Mount Evans | 35) Echo Lake          | 42) Arapaho Springs            |                                 |
| 7) Bard Creek                      | 14) Maxwell Falls Upper | 21) Guanella Pass | 28) Maxwell Falls Lower   | 36) Clear Lake         | 43) Guanella Pass              |                                 |

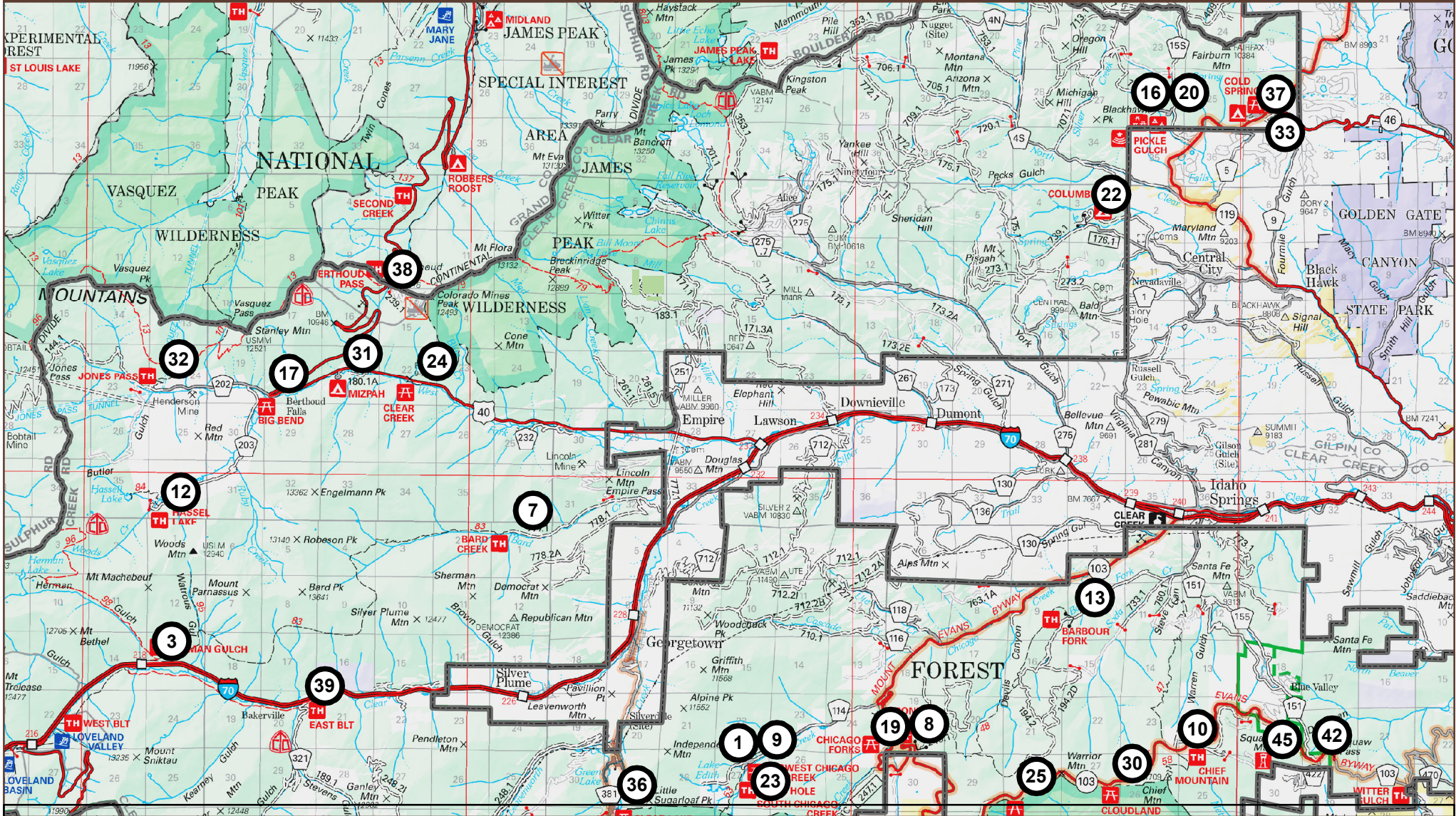
This product is reproduced from geospatial information prepared by the U.S. Department of Agriculture, Forest Service. GIS data and product accuracy may vary. They may be developed from sources of differing accuracy, accurate only at certain scales, based on modeling or interpretation, incomplete while being created or revised, etc. Using GIS products for purposes other than those for which they were created, may yield inaccurate or misleading results. The Forest Service reserves the right to correct, update, modify, or replace GIS products based on new inventories, new or revised and if necessary in conjunction with other federal, state or local public agencies or the public in general as required by policy or regulation. Previous recipients of the products may not be notified unless required by policy or regulation. For more information concerning this map, contact the Arapaho & Roosevelt National Forests: 2150 Centre Ave, Building E Fort Collins, CO 80526.



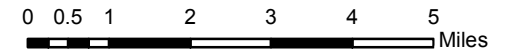


# Clear Creek Ranger District Food Storage Order Sites

Arapaho and Roosevelt  
National Forests  
Region 02



- |                       |                         |                   |                  |                  |                                 |
|-----------------------|-------------------------|-------------------|------------------|------------------|---------------------------------|
| 1) Hells Hole         | 10) Chief Mountain      | 16) Pickle Gulch  | 23) Hells Hole   | 32) Jones Pass   | 39) East Blt                    |
| 3) Herman Gulch       | 11) South Chicago Creek | 17) Big Bend      | 24) Clear Creek  | 33) Cold Springs | 42) Arapaho Springs             |
| 7) Bard Creek         | 12) Hassel Lake         | 19) Chicago Forks | 25) Juniper Pass | 36) Clear Lake   | 45) Squaw Mountain Fire Lookout |
| 8) Ponder Point       | 13) Barbour Forks       | 20) Pickle Gulch  | 30) Cloudland    | 37) Cold Springs |                                 |
| 9) West Chicago Creek | 15) Loveland Pass       | 22) Columbine     | 31) Mizpah       |                  |                                 |

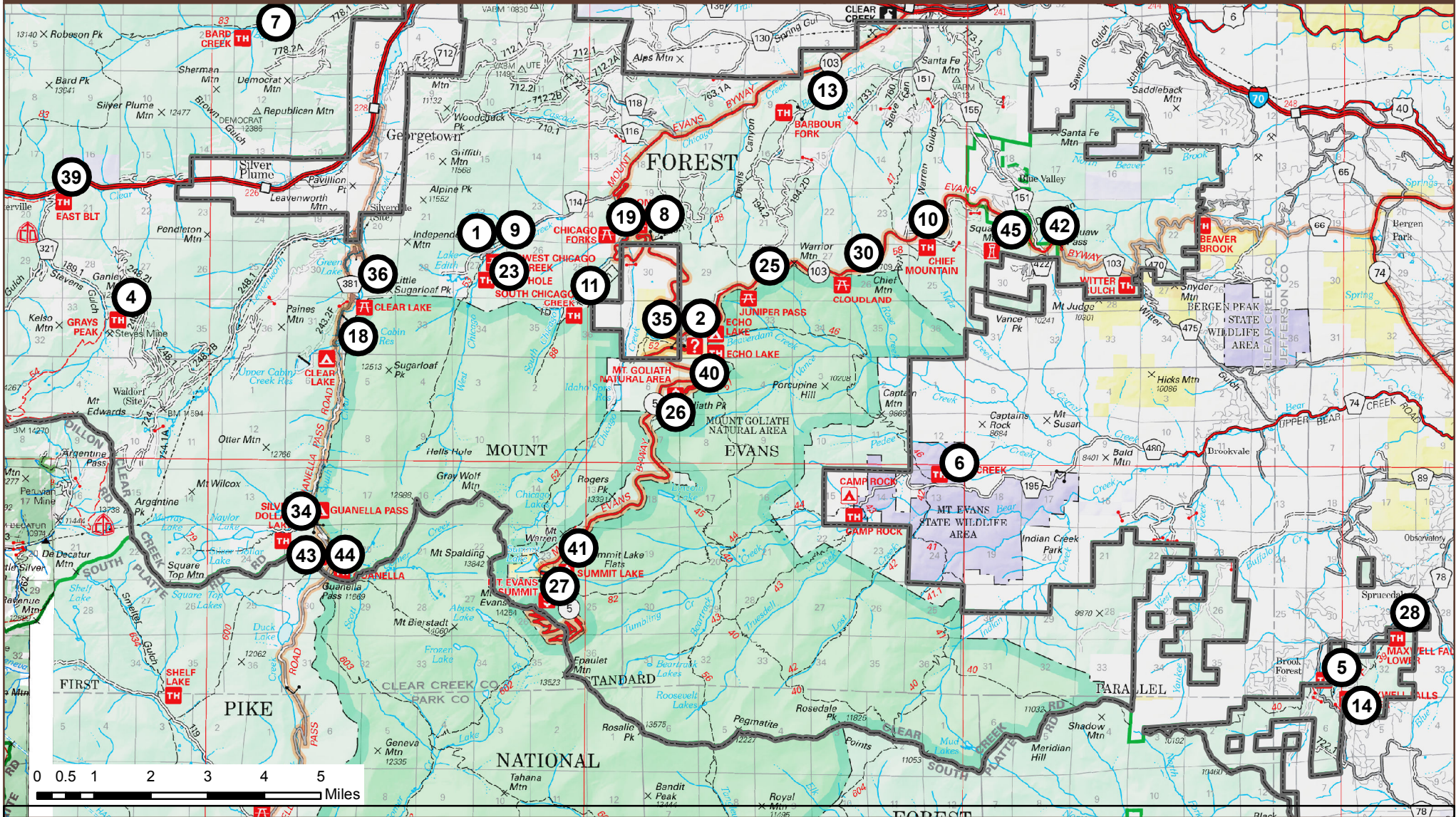


This product is reproduced from geospatial information prepared by the U.S. Department of Agriculture, Forest Service. GIS data and product accuracy may vary. They may be developed from sources of differing accuracy, accurate only at certain scales, based on modeling or interpretation, incomplete while being created or revised, etc. Using GIS products for purposes other than those for which they were created, may yield inaccurate or misleading results. The Forest Service reserves the right to correct, update, modify, or replace, GIS products based on new inventories, new or revised and if necessary in conjunction with other federal, state or local public agencies or the public in general as required by policy or regulation. Previous recipients of the products may not be notified unless required by policy or regulation. For more information concerning this map, contact the Arapaho & Roosevelt National Forests: 2150 Centre Ave, Building E Fort Collins, CO 80526.



# Clear Creek Ranger District Food Storage Order Sites

Arapaho and Roosevelt  
National Forests  
Region 02



- |                                    |                         |                   |                           |                                 |
|------------------------------------|-------------------------|-------------------|---------------------------|---------------------------------|
| 1) Hells Hole                      | 8) Ponder Point         | 18) Clear Lake    | 27) Summit Of Mount Evans | 39) East Blt                    |
| 2) Echo Lake                       | 9) West Chicago Creek   | 19) Chicago Forks | 28) Maxwell Falls Lower   | 40) Mount Goliath Natural Area  |
| 4) Grays Peak                      | 10) Chief Mountain      | 21) Guanella Pass | 30) Cloudland             | 41) Summit Lake Flats           |
| 5) Cub Creek                       | 11) South Chicago Creek | 23) Hells Hole    | 34) Silver Dollar Lake    | 42) Arapaho Springs             |
| 6) Captain Mountain (Echo Lake Cg) | 13) Barbour Forks       | 25) Juniper Pass  | 35) Echo Lake             | 43) Guanella Pass               |
| 7) Bard Creek                      | 14) Maxwell Falls Upper | 26) Upper Goliath | 36) Clear Lake            | 44) Bierstadt                   |
|                                    |                         |                   |                           | 45) Squaw Mountain Fire Lookout |

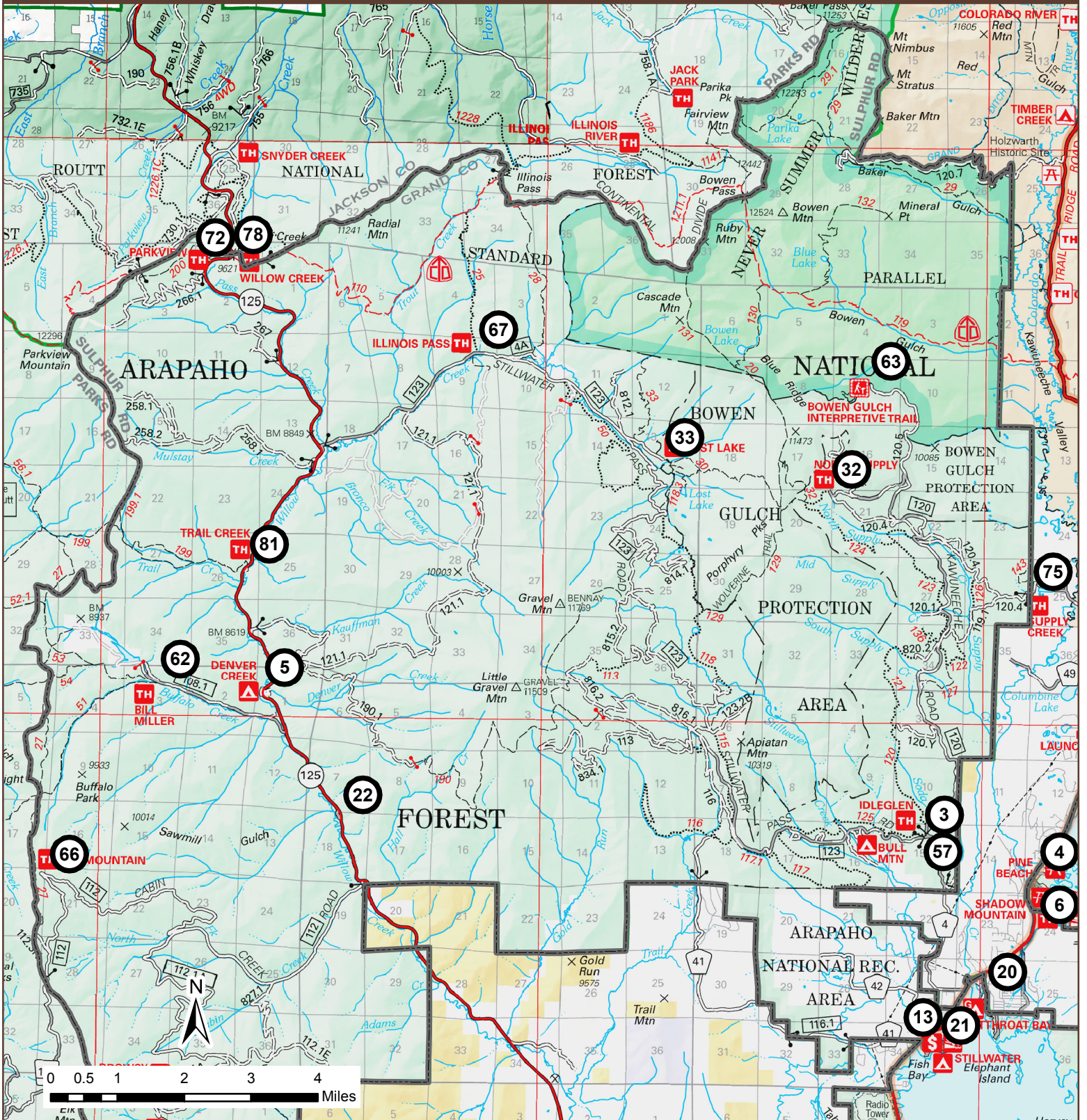


This product is reproduced from geospatial information prepared by the U.S. Department of Agriculture, Forest Service. GIS data and product accuracy may vary. They may be developed from sources of differing accuracy, accurate only at certain scales, based on modeling or interpretation, incomplete while being created or revised, etc. Using GIS products for purposes other than those for which they were created, may yield inaccurate or misleading results. The Forest Service reserves the right to correct, update, modify, or replace, GIS products based on new inventories, new or revised and if necessary in conjunction with other federal, state or local public agencies or the public in general as required by policy or regulation. Previous recipients of the products may not be notified unless required by policy or regulation. For more information concerning this map, contact the Arapaho & Roosevelt National Forests: 2150 Centre Ave, Building E Fort Collins, CO 80526.



# Sulphur Ranger District Food Storage Order Sites

Arapaho and Roosevelt  
National Forests  
Region 02



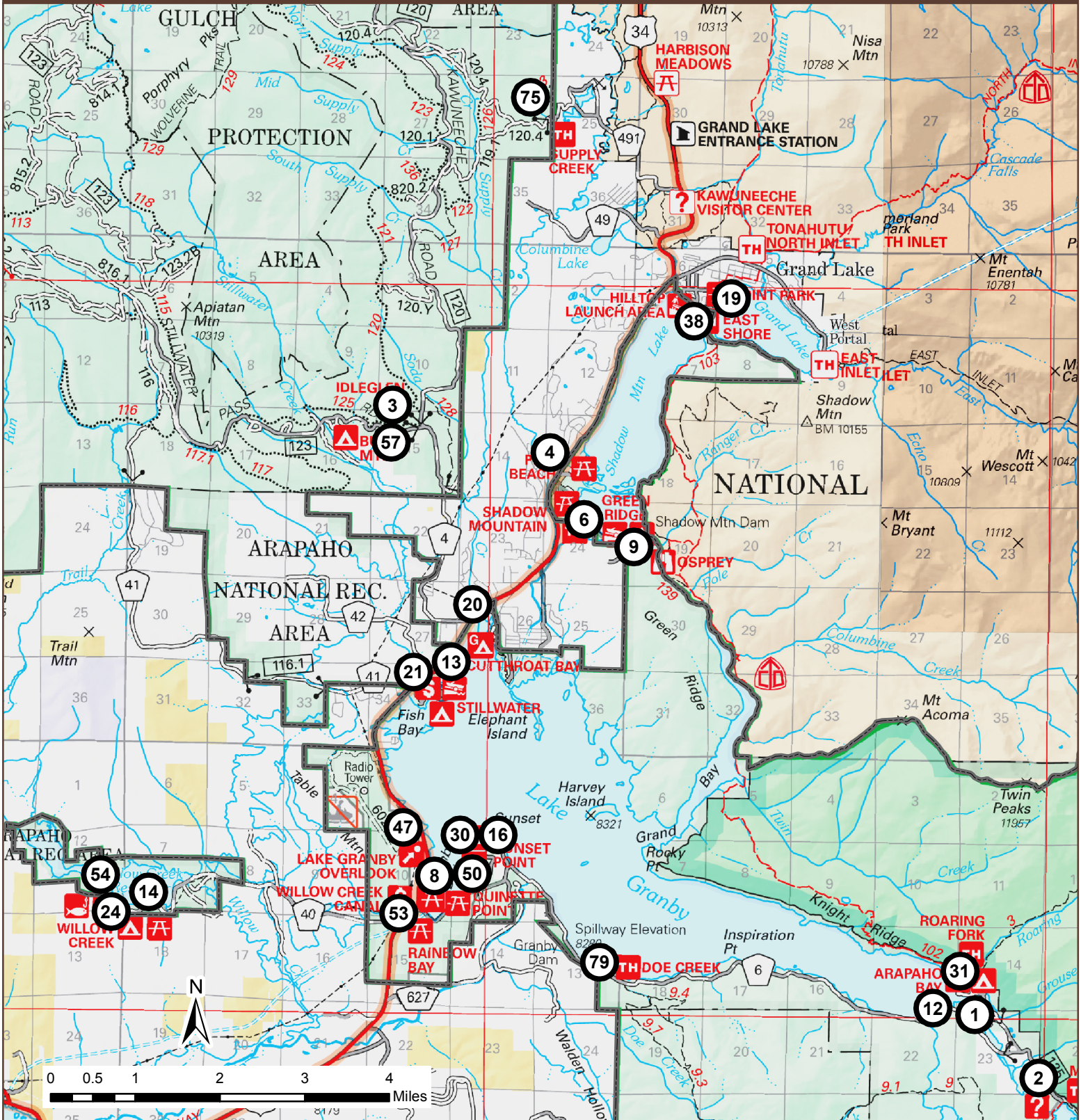
- |                 |                   |                     |                   |                         |
|-----------------|-------------------|---------------------|-------------------|-------------------------|
| 3) Idleglen     | 13) Stillwater    | 27) Shadow Mountain | 62) Bill Miller   | 72) Parkview            |
| 4) Pine Beach   | 20) Cutthroat Bay | 32) North Supply    | 63) Bowen Gulch   | 75) Supply Creek        |
| 5) Denver Creek | 21) Stillwater    | 33) Lost Lake       | 66) Elk Mountain  | 78) Willow Creek Pass   |
| 6) Green Ridge  | 22) Sawmill Gulch | 57) Bull Mountain   | 67) Illinois Pass | 81) Trail Creek - Co125 |

This product is reproduced from geospatial information prepared by the U.S. Department of Agriculture, Forest Service. GIS data and product accuracy may vary. They may be developed from sources of differing accuracy, accurate only at certain scales, based on modeling or interpretation, incomplete while being created or revised, etc. Using GIS products for purposes other than those for which they were created, may yield inaccurate or misleading results. The Forest Service reserves the right to correct, update, modify, or replace, GIS products based on new inventories, new or revised and if necessary in conjunction with other federal, state or local public agencies or the public in general as required by policy or regulation. Previous recipients of the products may not be notified unless required by policy or regulation. For more information concerning this map, contact the Arapaho & Roosevelt National Forests: 2150 Centre Ave Building E, Fort Collins, CO 80526.



# Sulphur Ranger District Food Storage Order Sites

Arapaho and Roosevelt  
National Forests  
Region 02



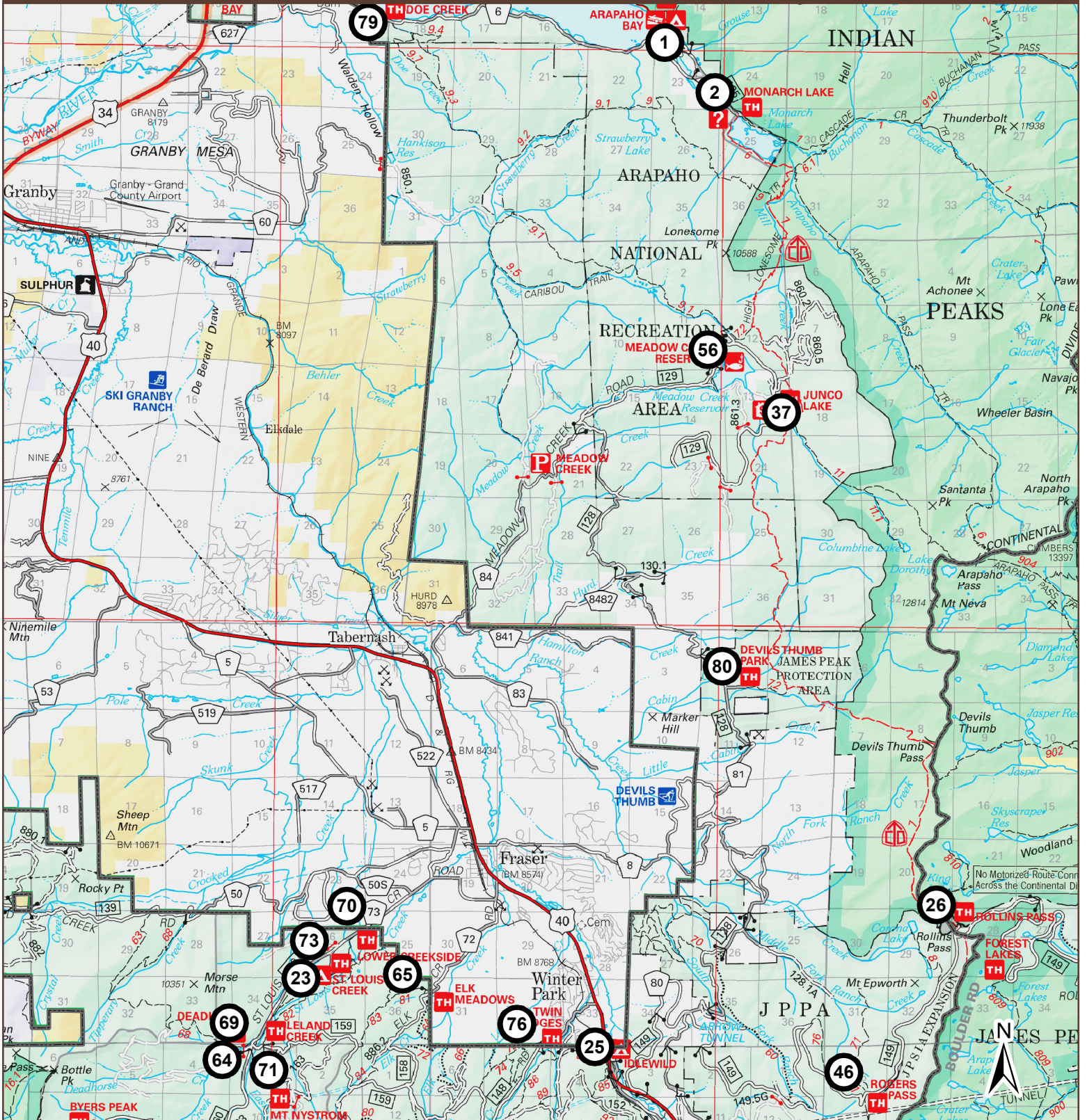
- |                   |                            |                       |                          |                        |
|-------------------|----------------------------|-----------------------|--------------------------|------------------------|
| 1) Arapaho Bay    | 9) AA Bar Ranch            | 18) Hilltop Boat Ramp | 30) East Shore           | 53) Willow Creek Canal |
| 2) Monarch Lake   | 11) Sunset Point           | 19) Point Park        | 31) Roaring Fork         | 54) Willow Creek       |
| 3) Idleglen       | 12) Roaring Fork Boat Ramp | 20) Cutthroat Bay     | 38) Shadow Mountain Dam  | 55) Osprey             |
| 4) Pine Beach     | 13) Stillwater             | 21) Stillwater        | 44) Green Ridge          | 57) Bull Mountain      |
| 6) Green Ridge    | 14) Willow Creek           | 24) Willow Creek      | 47) Lake Granby Overlook | 75) Supply Creek       |
| 8) Quinette Point | 16) Sunset Point           | 27) Shadow Mountain   | 50) Rainbow Bay          | 79) Doe Creek          |

This product is reproduced from geospatial information prepared by the U.S. Department of Agriculture, Forest Service. GIS data and product accuracy may vary. They may be developed from sources of differing accuracy, accurate only at certain scales, based on modeling interpretation, incomplete while being created or revised, etc. Using GIS products for purposes other than those for which they were created, may yield inaccurate or misleading results. The Forest Service reserves the right to correct, update, modify, or replace, GIS products based on new inventories, new or revised and if necessary in conjunction with other federal, state or local public agencies or the public in general as required by policy or regulation. Previous recipients of the products may not be notified unless required by policy or regulation. For more information concerning this map, contact the Arapaho & Roosevelt National Forests: 2150 Centre Ave Building E, Fort Collins, CO 80526.

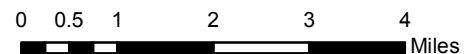


# Sulphur Ranger District Food Storage Order Sites

Arapaho and Roosevelt  
National Forests  
Region 02



- |                            |                  |                            |                     |                       |
|----------------------------|------------------|----------------------------|---------------------|-----------------------|
| 1) Arapaho Bay             | 25) Idlewild     | 46) Rogers Pass/Rifesight  | 69) Leland          | 76) Twin Bridges      |
| 2) Monarch Lake            | 26) Rollins Pass | 56) Meadow Creek Reservoir | 70) Lower Creekside | 79) Doe Creek         |
| 12) Roaring Fork Boat Ramp | 31) Roaring Fork | 64) Deadhorse              | 71) Mount Nystrom   | 80) Devils Thumb Park |
| 23) St. Louis Creek        | 37) Junco Lake   | 65) Elk Meadows            | 73) St. Louis Creek |                       |

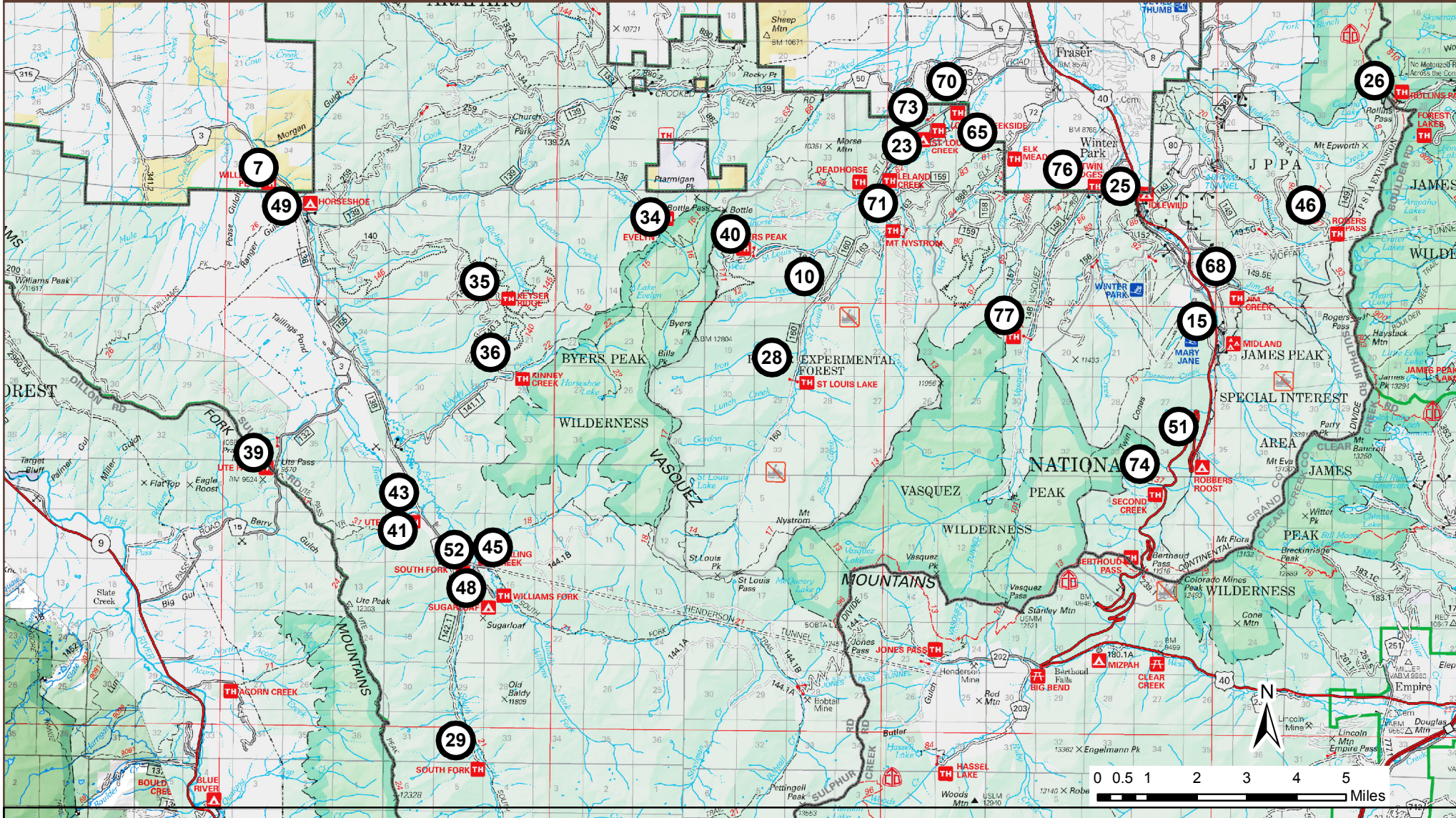


This product is reproduced from geospatial information prepared by the U.S. Department of Agriculture, Forest Service. GIS data and product accuracy may vary. They may be developed from sources of differing accuracy, accurate only at certain scales, based on modeling or interpretation, incomplete while being created or revised, etc. Using GIS products for purposes other than those for which they were created, may yield inaccurate or misleading results. The Forest Service reserves the right to correct, update, modify, or replace, GIS products based on new inventories, new or revised and if necessary in conjunction with other federal, state or local public agencies or the public in general as required by policy or regulation. Previous recipients of the products may not be notified unless required by policy or regulation. For more information concerning this map, contact the Arapaho & Roosevelt National Forests: 2150 Centre Ave Building E, Fort Collins, CO 80526.



# Sulphur Ranger District Food Storage Order Sites

Arapaho and Roosevelt  
National Forests  
Region 02



- |                     |                    |                      |                            |                     |                  |
|---------------------|--------------------|----------------------|----------------------------|---------------------|------------------|
| 7) Williams Peak    | 26) Rollins Pass   | 39) Ute Pass         | 46) Rogers Pass/Riflesight | 65) Elk Meadows     | 74) Second Creek |
| 10) Byers Creek     | 28) St. Louis Lake | 40) Byers Peak       | 48) Sugarloaf              | 68) Jim Creek       | 76) Twin Bridges |
| 15) Midland         | 29) South Fork     | 41) Ute Peak         | 49) Horseshoe              | 69) Leland          | 77) Vasquez Peak |
| 17) Williams Fork   | 34) Lake Evelyn    | 42) Williams Fork Th | 51) Robbers Roost          | 70) Lower Creekside |                  |
| 23) St. Louis Creek | 35) Keyser Ridge   | 43) Ptarmigan Pond   | 52) South Fork             | 71) Mount Nystrom   |                  |
| 25) Idlewild        | 36) Kinney Creek   | 45) Darling Creek    | 64) Deadhorse              | 73) St. Louis Creek |                  |

This product is reproduced from geospatial information prepared by the U.S. Department of Agriculture, Forest Service. GIS data and product accuracy may vary. They may be developed from sources of differing accuracy, accurate only at certain scales, based on modeling or interpretation, incomplete while being created or revised, etc. Using GIS products for purposes other than those for which they were created, may yield inaccurate or misleading results. The Forest Service reserves the right to correct, update, modify, or replace, GIS products based on new inventories, new or revised and if necessary in conjunction with other federal, state or local public agencies or the public in general as required by policy or regulation. Previous recipients of the products may not be notified unless required by policy or regulation. For more information concerning this map, contact the Arapaho & Roosevelt National Forests: 2150 Centre Ave, Building E Fort Collins, CO 80526.