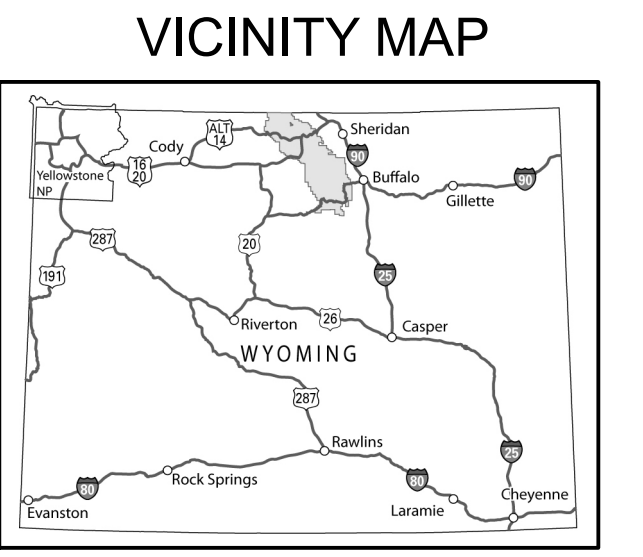


# Motor Vehicle Use Map Bighorn National Forest



### INFORMATION SOURCES

Bighorn National Forest Information Contacts:

- Bighorn National Forest  
2013 Eastside 2nd St.  
Sheridan, WY 82801  
(307) 674-2600  
<http://www.fs.usda.gov/main/bighorn/home>
- Medicine Wheel Ranger District  
95 Highway 1620  
Greybull, WY 82426  
(307) 765-4435
- Powder River Ranger District  
1415 Fort Street  
Buffalo, WY 82834  
(307) 684-7806
- Tongue Ranger District  
2013 Eastside 2nd St.  
Sheridan, WY 82801  
(307) 674-2500
- In Case of Emergency  
Dial 911



### tread lightly!

LEAVING A GOOD IMPRESSION

Travel and recreate with minimum impact.

Respect the environment and the rights of others.

Educate yourself plan and prepare before you go.

Allow for future use of the outdoors by leaving it better than you found it.

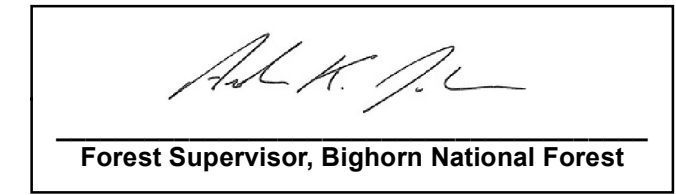
Discover the rewards of responsible recreation.

For more information on Tread Lightly!, go to [www.treadlightly.org](http://www.treadlightly.org) or call 1-800-966-9900.

The U.S. Department of Agriculture (USDA) prohibits discrimination in all its programs and activities on the basis of race, color, national origin, age, disability, and where applicable, sex, marital status, familial status, parental status, religion, sexual orientation, genetic information, political beliefs, reprisal, or because all or part of an individual's income is derived from any public assistance program. (Not all prohibited bases apply to all programs.) Persons with disabilities who require alternative means for communication of program information (Braille, large print, audiotape, etc.) should contact USDA's TARGET Center at (202) 720-2600 (voice and TDD). To file a complaint of discrimination, write to USDA, Director, Office of Civil Rights, 1400 Independence Avenue, S.W., Washington, D.C. 20250-9410, or call (800) 795-3272 (voice) or (202) 720-6382 (TDD). USDA is an equal opportunity provider and employer.

## PURPOSE AND CONTENTS OF THIS MAP

The designations shown on this motor vehicle use map (MVUM) were made by the responsible official pursuant to 36 CFR 212.51, are effective as of the date on the front cover of this MVUM, and will remain in effect until superseded by next year's MVUM.



It is the responsibility of the user to acquire the current MVUM. This MVUM shows the National Forest System roads, National Forest System trails, and the areas on National Forest System lands in the Bighorn National Forest that are designated for motor vehicle use pursuant to 36 CFR 212.51. This MVUM also identifies the vehicle classes allowed on each route and in each area, and any seasonal restrictions that apply on those routes and in those areas.

Designation of a road, trail, or area for motor vehicle use by a particular class of vehicle under 36 CFR 212.51 should not be interpreted as encouraging or inviting use or implying that the road, trail, or area is passable, actively maintained, or safe for travel. Motor vehicle designations include parking along designated routes and at facilities associated with designated routes when it is safe to do so and when not causing damage to National Forest System resources. Seasonal weather conditions and natural events may render designated roads and trails impassable for extended periods. Designated areas may contain dangerous or impassable terrain. Many designated roads and trails may be passable only by high-clearance vehicles or four-wheel-drive vehicles. Maintenance of designated roads and trails will depend on available resources, and many may receive little maintenance.

This motor vehicle use map identifies those roads, trails, and areas designated for the motor vehicle use under 36 CFR 212.51 for the purpose of enforcing the prohibition at 36 CFR 261.13. This is a limited purpose. The other public roads are shown for information and navigation purposes only and are not subject to designation under the Forest Service travel management regulation.

These designations apply only to National Forest System roads, National Forest System trails, and areas on National Forest System lands.

### Legend

- Roads Open to All Vehicles
- Trails Open to Vehicles 50" or Less in Width
- Trails Open to Motorcycles Only
- Special Vehicle Designation (See Table)
- Seasonal Designation (See Table)
- Dispersed Camping, Both Sides
- Interstate
- Highways, U.S. State
- Other Public Roads
- Other Public Trails
- Short Route Identifier
- Milepost Marker
- FS Campground
- Picnic Area
- Motorized Trailhead
- Information Site
- Peaks
- Forest or Unit Boundary
- National Forest System Lands
- Non-National Forest System Lands within the National Forest
- Wilderness Areas
- Township and Range Lines
- Section Lines
- Lakes and Rivers

0 0.5 1 2 3 4 Miles

## EXPLANATION OF LEGEND ITEMS

### Roads Open to All Vehicles:

These roads are open to all motor vehicles, including smaller off-highway vehicles that may not be licensed for highway use (but not to oversized or overweight vehicles under State traffic law).

### Trails Open to Vehicles 50 inches or Less in Width:

Trails open only to motor vehicles less than 50 inches in width at the widest point on the vehicle.

### Trails Open to Motorcycles Only:

These trails are open only to motorcycles. Sidecars are not permitted.

### Special Vehicle Designation:

This symbol indicates the road or trail is open to classes of vehicles other than those listed above. Refer to the Seasonal and Special Designation Table for further instructions.

### Seasonal Designation:

This symbol, used in conjunction with one of the other road or trail symbols, indicates that the road or trail is open only during certain portions of the year. Refer to Seasonal and Special Designation Table for further instructions.

### Dispersed Camping:

Dispersed Camping, Both Sides

This symbol is used along with a designated road or trail to indicate limited cross-country motor vehicle use within a specific distance of that route, solely for the purpose of dispersed camping. The dots indicate where this activity is permitted. They may be on the left, right, or both sides of the route. Refer to the Dispersed Camping Table for specifics.

### Other Public Roads and Trails:

- Interstate
- Highways, U.S. State
- Other Public Roads
- Other Public Trails

These symbols are used to show routes the Forest Service does not have jurisdiction over and has not designated for motorized use. These symbols are part of the reference layers showing connections to towns and cities outside the forest boundary.

### Short Route Identifier:

This symbol is used for roads that are too short to show a symbol type on the map. The symbol contains the number of the road or trail. Users should refer to the corresponding number in the Short Route Table for designation information.

### Milepost Marker:

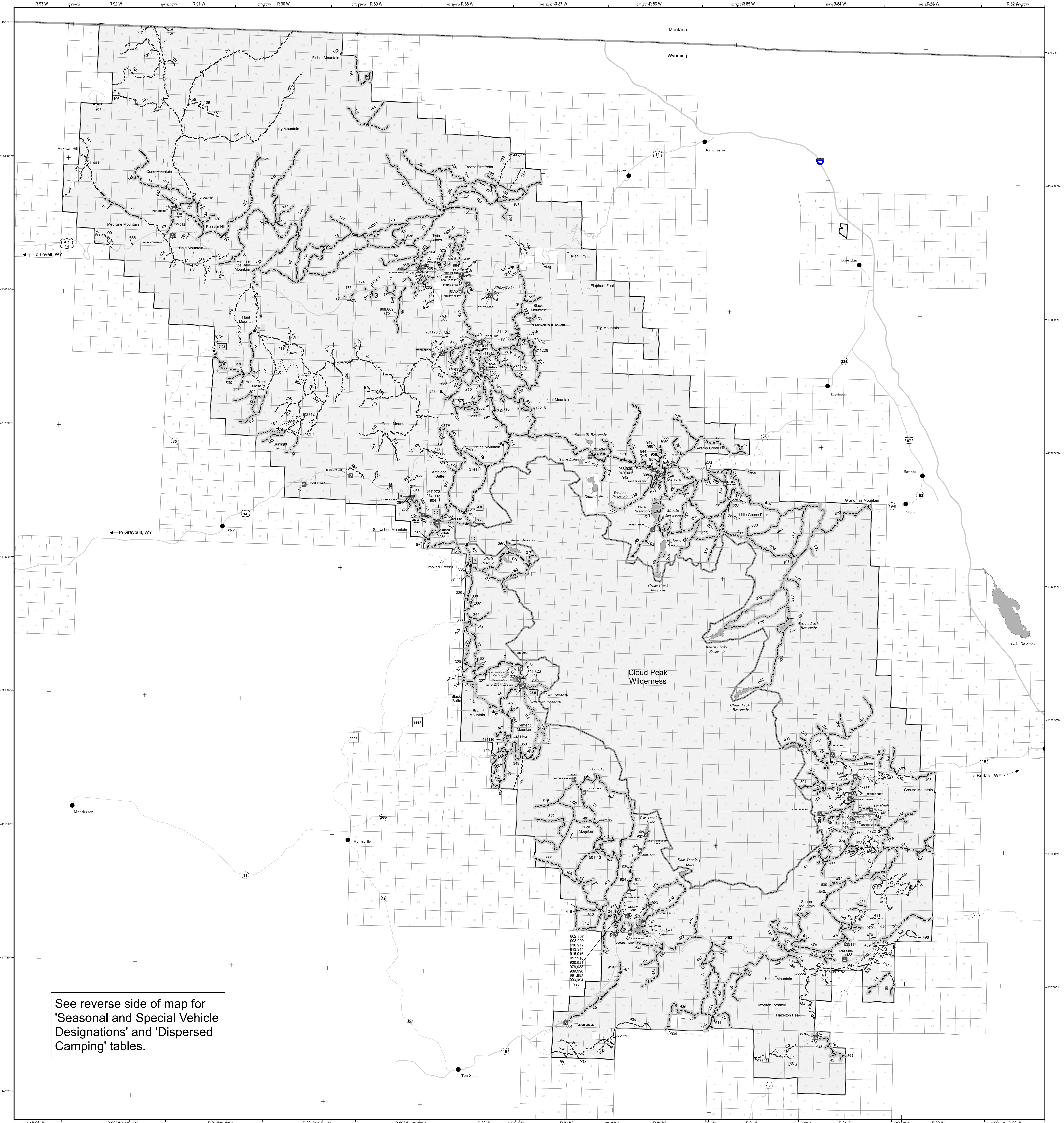
This symbol is used to display the beginning and ending mileposts of a road that has a change in the designation but not the symbology.

### Motorized Trail Access:

This symbol indicates a trailhead for access to a motorized route. Not all motorized routes have trailheads and those that do may range from primitive to developed.

## Blanket Statement For Travel Management:

"Between October 1st and May 31st, the dispersed camping prohibitions along US Hwy 14 and 14A, FSR 13, FSR 16, FSR 26, FSR 125, and FSR 137 are lifted."



See reverse side of map for 'Seasonal and Special Vehicle Designations' and 'Dispersed Camping' tables.

This product may contain geographic feature names declared derogatory through U.S. Department of the Interior Secretarial Orders 3404 & 3405. Upon the next printing of this publication the USDA Forest Service will use official replacement names. For a list of declared derogatory names and official replacement names, visit: [www.usgs.gov/us-board-on-geographic-names](http://www.usgs.gov/us-board-on-geographic-names)

