

Travel Map Coconino National Forest

**America's Great Outdoors
ARIZONA**
Apr 15 2023

USDA
United States Department of Agriculture - Forest Service

Coconino National Forest Travel Map

Purpose: This Travel Map identifies the roads, trails, and areas designated for public motor vehicle use on Coconino National Forest lands, as well as popular Forest locations and destinations. These motorized travel designations apply only to National Forest System roads, National Forest System trails, and areas on National Forest System lands.

The Travel Map has been designed for use on mobile devices, such as smartphones or tablets.

Road, Trail, and Area Designations: The road, trail, and area designations depicted on this Travel Map are identical to the road, trail, and area designations depicted on the current Coconino National Forest Motor Vehicle Use Map (MVUM). However, this Travel Map is not the official MVUM, and should be considered to be a supplement to, not a substitute for, the MVUM. The MVUM is the final authority should any discrepancies arise between this Travel Map and the MVUM. Obtain a current MVUM at a Coconino National Forest office, or by calling 928-827-3600.

Driving Conditions: Designation of a road, trail, or area should not be interpreted as an invitation to use motor vehicles, or as an implication that the road, trail, or area is passable, actively maintained, or safe for travel. Seasonal weather conditions and natural events may render designated roads, trails, and areas impassable for extended periods. Many designated roads, trails, and areas may be passable only with high-clearance, or all-wheel drive vehicles. Maintenance of designated roads, trails, and areas depends on available resources, and many may receive little, or no, maintenance.

Contact Us: Coconino National Forest is interested in hearing from you. If you have concerns about which roads are open or closed, or want to report an issue with a road or road sign, you can do so by visiting <http://go.usa.gov/OwW>, or by calling Coconino National Forest at 928-827-3600.

Legend

Point of Interest

- Boating site
- Camping site
- District office
- Fishing site
- Forest Supervisor's office
- Information site
- Motorized halftrail
- Observation site
- Picnic site
- Winter recreation site
- Summit

Road

- Interstate
- State or U.S. highway
- Other public road
- Road open to all vehicles, all year
- Road open to all vehicles, seasonal
- Road open to high-clearance vehicles, all year
- Road open to high-clearance vehicles, seasonal
- Road closed to vehicles < 62" wide, seasonal
- Off-forest road

Trail

- Trail open to all vehicles, all year
- Trail open to motorcycles, all year
- Trail open to vehicles < 62" wide, all year
- Non-motorized trail (not all trails are labeled)

Motorized dispersed camping corridor

- Both sides of road
- Left side of road
- Right side of road

Area Restrictions

- Camping and Campfire Restrictions
- Camping Restrictions
- Campfire Restrictions
- Cross-Country travel
- Major lake or pond
- Major drainage
- Forest boundary
- District boundary
- County boundary
- Hunting area boundary

Surface ownership

- National Forest
- National Park Service
- Other Federal
- State
- Tribal

Scale: 0 0.5 1 2 3 4 5 Miles

Explanation of Legend Items

Public road:

- Interstate Highway
- State or U.S. Highway
- Other public road

These symbols show routes the Forest Service has not designated for motorized use.

Road open to highway-legal vehicles:

These roads are open only to motor vehicles licensed under state law for general operation on all public roads. Routes shown in green are open seasonally as described in the "Seasonal Designations" table.

Road open to all vehicles:

These roads are open to all motor vehicles, including smaller off-highway vehicles that may not be licensed for highway use, but not to oversized or overweight vehicles under state law. Roads shown in yellow are open to all vehicles. Routes shown in yellow are open all year. Routes shown in green are open seasonally as described in the "Seasonal Designations" table.

Road or trail open to vehicles less than 62" wide:

These roads or trails are open only to motor vehicles less than 62 inches in width at their widest point. Routes shown in yellow are open all year. Routes shown in green are open seasonally as described in the "Seasonal Designations" table.

Trail open to all vehicles:

These trails are open to all motor vehicles, including both high-clearance and non-high-clearance vehicles. Routes shown in yellow are open all year.

Trail open to motorcycles only:

These trails are open only to motorcycles. Sidecars are not permitted. Routes shown in yellow are open all year.

Motorized dispersed camping corridor:

- Both sides of road
- Left side of road
- Right side of road

This symbol indicates a corridor along a designated road or trail to indicate limited cross-country motor vehicle use. Routes shown in yellow are open all year. Routes shown in green are open seasonally as described in the "Seasonal Designations" table.

Motorized halftrail:

This symbol indicates a halftrail for access to a motorized trail. Not all motorized trails have halftrails, and those that do may range from primitive to developed.

Area open to cross-country travel:

These areas on National Forest System land where cross-country travel by motorized vehicles is permitted.

Designated roads are subject to wet weather or winter conditions, active maintenance, or other seasonal conditions, project related work, emergency activities, or fire fighting operations. Roads designated on this map area are available for motorized use as indicated except when posted as being unavailable for use due to wet conditions or other administrative or public safety needs. Winter weather closures generally occur in higher elevations starting with the first substantial snowfall in late December, and can last until mid-April. Please check the Coconino National Forest website at <http://www.fs.usda.gov/coconino> for the latest information about status of roads.

OHV Safety

- Wear a helmet and other protective gear, including eye protection, gloves, long-sleeved shirt, long pants, and over-the-ankle boots.
- Never allow more riders than the OHV was designed for.
- Maintain a safe following distance.
- Drive at an appropriate speed.
- Anticipate rough surfaces and obstacles.
- Make sure that your OHV is in good mechanical condition before riding.
- Stay on designated routes.
- Never ride alone.

Young Riders

- Always supervise children when they are riding.
- Camping areas are not permissible riding areas.
- Riding OHVs in or around campgrounds and dispersed campsites is prohibited. Ride on designated routes only.
- Kids are allowed to ride on routes designated as motorized trails, or on roads designated for "all vehicles".
- Kids under 16 are required to wear US DOT certified helmets while operating OHVs.

Reporting Wildfires or Illegal Activity

- In case of a non-fire emergency, call 911.
- To report a wildfire or an illegal activity, call the Coconino National Forest Dispatch Center at 928-539-8500.
- Provide as much information as possible, including:
 - Your specific location
 - Your contact information
 - Any risks you observe

Camping Rules and Etiquette

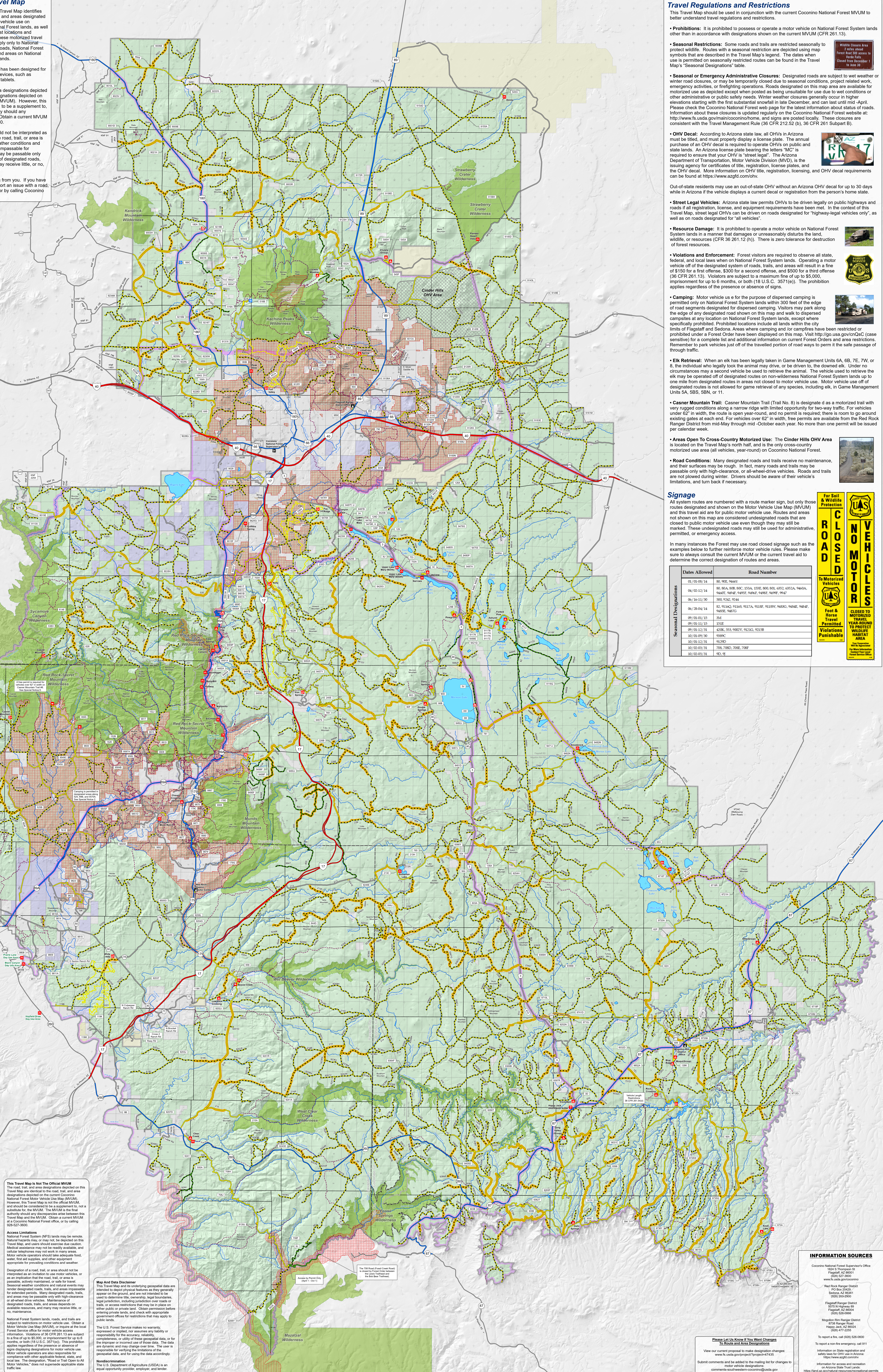
- Riding OHVs in developed campgrounds, or in dispersed camping areas, is prohibited.
- Ride only on designated routes.
- Keep your pets leashed in campgrounds, and under control wherever you are.
- Keep the volume turned down on music and conversation. Many people camp on National Forest System lands to enjoy the peace and quiet.
- Bear-aware
 - Never intentionally feed wildlife.
 - Secure garbage and put food away.
 - Store food and other scented items well away from sleeping areas.
- Roadside camping
 - Park vehicles along the edge of any designated road, and walk to your campsite.
 - Drive up to 300 feet from the edge of a designated "dispersed camping" route to camp, as depicted on this Travel Map.
 - Do not build new campfires. Use existing ones.
 - Keep a clean camp. Clean up all trash, and pack it out when you leave.
 - Do not cause damage to vegetation or nearby water sources.
 - Do not camp in areas with invasive weeds.

Wildfire Restrictions & Campfire Information

- Campfires are permitted on Coconino National Forest lands unless fire restrictions are in effect. Visit <http://www.fs.usda.gov/coconino> for current fire alerts and restrictions.
- Do not leave a campfire unattended until it is completely cold to the touch. Let the fire burn down to a fine ash, then add water and stir until it is cold. If water is not available, use dirt.
- Use existing campfire rings where they already exist.
- Avoid having a campfire when it is very dry or windy.

Recreation Opportunities

Visit <http://www.fs.usda.gov/coconino> for more detailed information on the diverse array of recreational opportunities available on Coconino National Forest.



Travel Regulations and Restrictions

This Travel Map should be used in conjunction with the current Coconino National Forest MVUM to better understand travel regulations and restrictions.

- Prohibitions:** It is prohibited to possess or operate a motor vehicle on National Forest System lands other than in accordance with designations shown on the current MVUM (CFR 261.13).
- Seasonal Restrictions:** Some roads and trails are restricted seasonally to protect wildlife. Routes with a seasonal restriction are depicted using map symbols that are described in the Travel Map's legend. The dates when use is permitted on seasonally restricted routes can be found in the Travel Map's "Seasonal Designations" table.
- Seasonal or Emergency Administrative Closures:** Designated roads are subject to wet weather or winter road closures, or may be temporarily closed due to seasonal conditions, project related work, emergency activities, or firefighting operations. Roads designated on this map area are available for motorized use as depicted except when posted as being unavailable for use due to wet conditions or other administrative or public safety needs. Winter weather closures generally occur in higher elevations starting with the first substantial snowfall in late December, and can last until mid-April. Please check the Coconino National Forest website for the latest information about status of roads. Information about these closures is updated regularly on the Coconino National Forest website at <http://www.fs.usda.gov/coconino>, and signs are posted locally. These closures are consistent with the Travel Management Rule (36 CFR 212.52 (b), 36 CFR 261 Subpart B).
- OHV Decal:** According to Arizona state law, all OHVs in Arizona must be titled, and must properly display a license plate. The annual purchase of an OHV decal is required to operate OHVs on public and state lands. An Arizona license plate bearing the letters "MC" is required to ensure that your OHV is "street legal". The Arizona Department of Transportation, Motor Vehicle Division (MVD), is the issuing agency for certificates of title, registration, license plates, and the OHV decal. More information on OHV title, registration, licensing, and OHV decal requirements can be found at <http://www.azdgt.com/ohv>.
- Out-of-state residents** may use an out-of-state OHV without an Arizona OHV decal for up to 30 days while in Arizona if the vehicle displays a current decal or registration from the person's home state.
- Street Legal Vehicles:** Arizona state law permits OHVs to be driven legally on public highways and roads if all registration, license, and equipment requirements have been met. In the context of this Travel Map, street legal OHVs can be driven on roads designated for "highway-legal vehicles only," as well as on roads designated for "all vehicles."
- Resource Damage:** It is prohibited to operate a motor vehicle on National Forest System lands in a manner that damages or irreparably disturbs the land, wildlife, or resources (CFR 36 261.12 (h)). There is zero tolerance for destruction of forest resources.
- Violations and Enforcement:** Forest visitors are required to observe all state, federal, and local laws when on National Forest System lands. Operating a motor vehicle off of the designated system of roads, trails, and areas will result in a fine of \$150 for a first offense, \$300 for a second offense, and \$500 for a third offense (36 CFR 261.13). Violators are subject to a maximum fine of up to \$5,000, imprisonment for up to 6 months, or both (18 U.S.C. 3571 (e)). The prohibition applies regardless of the presence or absence of signs.
- Camping:** Motor vehicle use for the purpose of dispersed camping is permitted only on National Forest System lands within 300 feet of the edge of road segments designated for dispersed camping. Visitors may park along the edge of any designated road shown on this map and walk to dispersed campsites at any location on National Forest System lands, except where specifically prohibited. Prohibited locations include all lands within the city limits of Flagstaff and Sedona. Areas where camping and/or campfires have been restricted or prohibited under a Forest Order have been displayed on this map. Visit <http://go.usa.gov/QnQc> (case sensitive) for a complete list and additional information on current Forest Orders and area restrictions. Remember to park vehicles just off of the travelled portion of road ways to permit the safe passage of through traffic.
- Elk Retrieval:** When an elk has been legally taken in Game Management Units 6A, 6B, 7E, 7W, or 8, the individual who legally took the animal may drive, or be driven to, the downed elk. Under no circumstances may a second vehicle be used to retrieve the animal. The vehicle used to retrieve the elk may be operated off of designated routes on non-wilderness National Forest System lands up to one mile from designated routes in areas not closed to motor vehicle use. Motor vehicle use of designated routes is not allowed for game retrieval of any species, including elk, in Game Management Units 5A, 5B, 5E, 5N, or 11.
- Casner Mountain Trail:** Casner Mountain Trail (Trail No. 8) is designated as a motorized trail with very rugged conditions along a narrow ridge with limited opportunity for two-way traffic. For vehicles under 62" in width, the route is open year-round, and no permit is required; there is no fee to go around existing gates at each end. For vehicles over 62" in width, free permits are available from the Red Rock Ranger District from mid-May through mid-October each year. No more than one permit will be issued per calendar week.
- Areas Open to Cross-Country Motorized Use:** The Cinder Hills OHV Area is located on the Travel Map's north half, and is the only cross-country motorized use area (all vehicles, year-round) on Coconino National Forest.
- Road Conditions:** Many designated roads and trails receive no maintenance, and their surfaces may be rough. In fact, many roads and trails may be passable only with high-clearance, or all-wheel-drive vehicles. Roads and trails are not plowed during winter. Drivers should be aware of their vehicle's limitations, and turn back if necessary.

Signage

All system routes are numbered with a route marker sign, but only those routes designated and shown on the Motor Vehicle Use Map (MVUM) and this travel map are for public motor vehicle use. Routes and areas not shown on this map are considered undesignated roads that are closed to public motor vehicle use even though they may still be marked. These undesignated roads may still be used for administrative, permitted, or emergency access.

In many instances the Forest may use road closed signage such as the examples below to further reinforce motor vehicle rules. Please make sure to always consult the current MVUM or the current travel map to determine the correct designation of routes and areas.

Dates Allowed	Road Number
01/01/06-12/31	80, 90E, 90W
04/02/12-14	80, 80A, 80B, 80C, 125A, 125B, 125C, 800, 801, 4032, 4033A, 9460A, 9461, 9462, 9463, 9464, 9465, 9466, 9467, 9468, 9469, 9470, 9471, 9472, 9473, 9474, 9475, 9476, 9477, 9478, 9479, 9480, 9481, 9482, 9483, 9484, 9485, 9486, 9487, 9488, 9489, 9490, 9491, 9492, 9493, 9494, 9495, 9496, 9497, 9498, 9499, 9500, 9501, 9502, 9503, 9504
06/16-11/30	500, 932, 934
06/28-04/14	32, 32A, 32B, 32C, 917A, 918, 919, 919B, 968, 946, 946B, 946C, 946D, 946E, 946F, 946G, 946H, 946I, 946J, 946K, 946L, 946M, 946N, 946O, 946P, 946Q, 946R, 946S, 946T, 946U, 946V, 946W, 946X, 946Y, 946Z
09/01/15	3M
09/11/15	151E
09/01/17-01/31	429E, 503, 980Y1, 98123, 9033B
10/01/09-30	689C
10/01/12-01	9129D
10/01/03-31	706, 706D, 706E, 706F
10/01/05-31	90, 91

For Soil & Wildlife Protection

CLOSED

To Motorized Vehicles

U.S. FOREST SERVICE

VEHICLES

NO MOTORS

U.S. FOREST SERVICE

Foot & Horse Travel Permitted

Violations Punishable

U.S. FOREST SERVICE

U.S. FOREST SERVICE

This Travel Map is Not the Official MVUM

The road, trail, and area designations depicted on this Travel Map are identical to the road, trail, and area designations depicted on the current Coconino National Forest Motor Vehicle Use Map (MVUM). However, this Travel Map is not the official MVUM, and should be considered to be a supplement to, not a substitute for, the MVUM. The MVUM is the final authority should any discrepancies arise between this Travel Map and the MVUM. Obtain a current MVUM at a Coconino National Forest office, or by calling 928-827-3600.

Access Limitations

National Forest System (NFS) lands may be remote, undeveloped, actively maintained, or require a permit to access. Travel Map, and users should exercise due caution. Motor vehicle operations should take adequate food, water, fuel, and other supplies, and other equipment appropriate to prevailing conditions and weather.

Map and Data Disclaimer

This Travel Map and its underlying geospatial data are intended to provide general information and are not intended to be used for navigation or other purposes. The data are dynamic and may change over time. The user is responsible for verifying the information of the geospatial data, and for using the data accordingly.

Map and Data Disclaimer

The U.S. Forest Service makes no warranty, expressed or implied, nor assumes any liability or responsibility for the accuracy, reliability, completeness, or timeliness of these geospatial data, or for the improper or incorrect use of those data. The data are dynamic and may change over time. The user is responsible for verifying the information of the geospatial data, and for using the data accordingly.

The U.S. Department of Agriculture (USDA) is an equal opportunity provider, employer, and lender.

INFORMATION SOURCES

Coconino National Forest Supervisor's Office
1624 E. Thompson St.
Flagstaff, AZ 86001
928-527-3600
www.fs.usda.gov/coconino

Red Rock Ranger District
2010 E. Highway 20
Flagstaff, AZ 86001
928-527-3600
www.fs.usda.gov/coconino

Flagstaff Ranger District
2010 E. Highway 20
Flagstaff, AZ 86001
928-527-3600
www.fs.usda.gov/coconino

Moghanan Ranger District
8788 Ranger Road
Moghanan, AZ 86001
928-527-3600
www.fs.usda.gov/coconino

To report a non-emergency, call 911.

Information on State registration and vehicle title requirements:
www.azdgt.com

Information on access and recreation on National Forest System lands:
<http://www.fs.usda.gov/coconino>

Please Let Us Know If You Want Changes

View our current proposal to make designation changes:
<http://www.fs.usda.gov/proposal/2023/04/23>

Submit comments and be added to the mailing list for changes to motor vehicle designations:
comments-southwestern-coconino@usda.gov