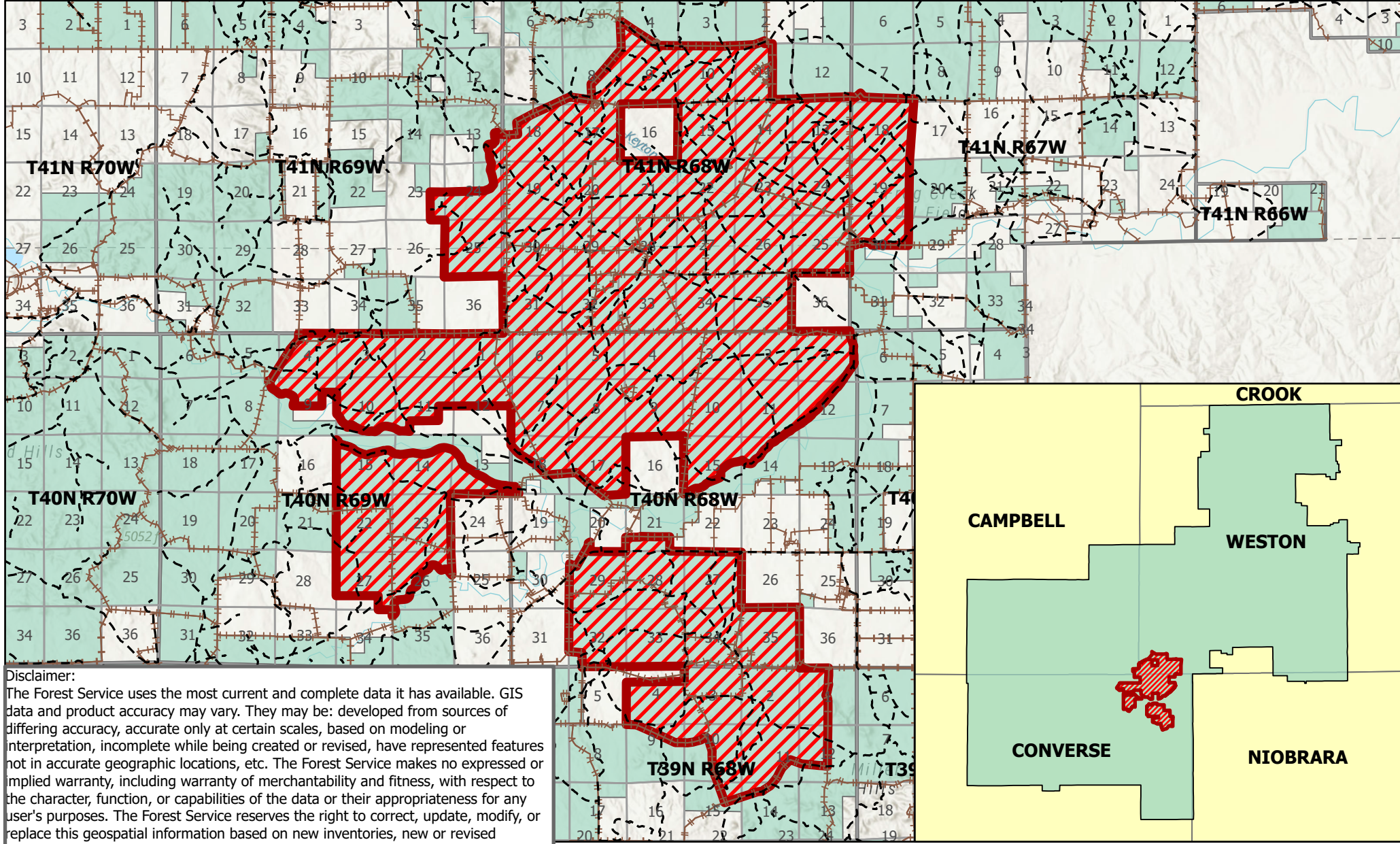




Medicine Bow - Routt
National Forests and
Thunder Basin
National Grassland

Exhibit Order No
MBRTB-2023-DRD-095

Thunder Basin National Grassland Prairie Dog Seasonal Hunting Restrictions



Disclaimer:
The Forest Service uses the most current and complete data it has available. GIS data and product accuracy may vary. They may be: developed from sources of differing accuracy, accurate only at certain scales, based on modeling or interpretation, incomplete while being created or revised, have represented features not in accurate geographic locations, etc. The Forest Service makes no expressed or implied warranty, including warranty of merchantability and fitness, with respect to the character, function, or capabilities of the data or their appropriateness for any user's purposes. The Forest Service reserves the right to correct, update, modify, or replace this geospatial information based on new inventories, new or revised information, and if necessary in conjunction with other federal, state or local public agencies or the public in general as required by policy or regulation. Previous recipients of the products may not be notified unless required by policy or regulation. For more information, contact the Medicine Bow-Routt National Forests and Thunder Basin National Grassland Supervisor's Office (2468 Jackson Street, Laramie, WY 82070, 307-745-2300).

- NFS Roads
- Fences
- Prairie Dog Seasonal Hunting Restrictions
- Thunder Basin National Grassland

