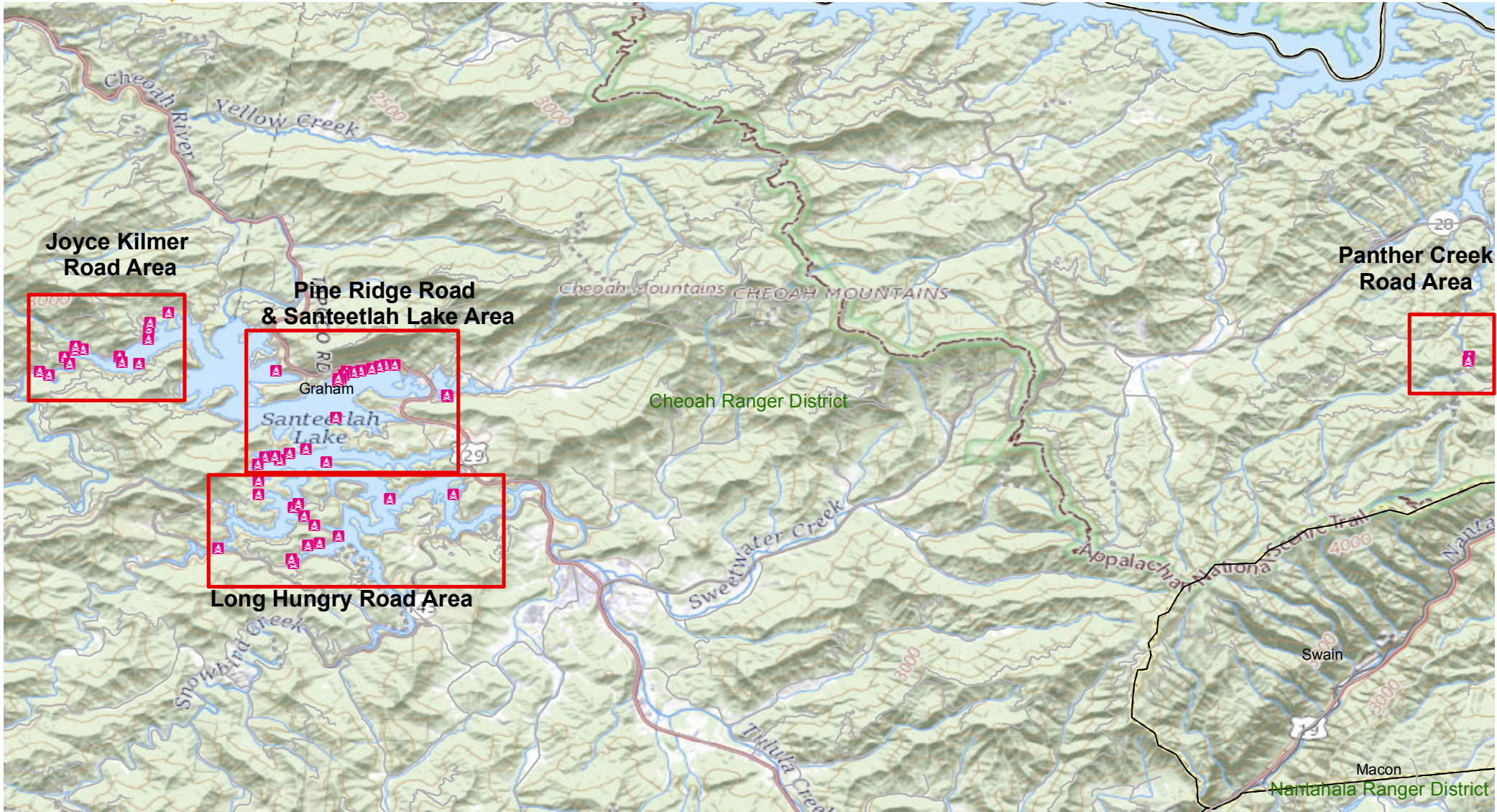






Cheoah Dispersed Campsites Closure Order Number: 08-11-02-21-154
Nantahala National Forest - Cheoah Ranger District

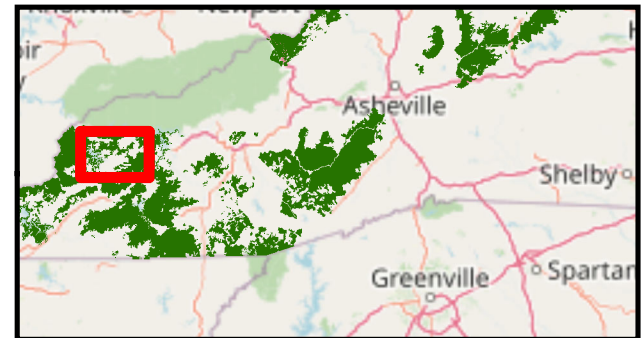


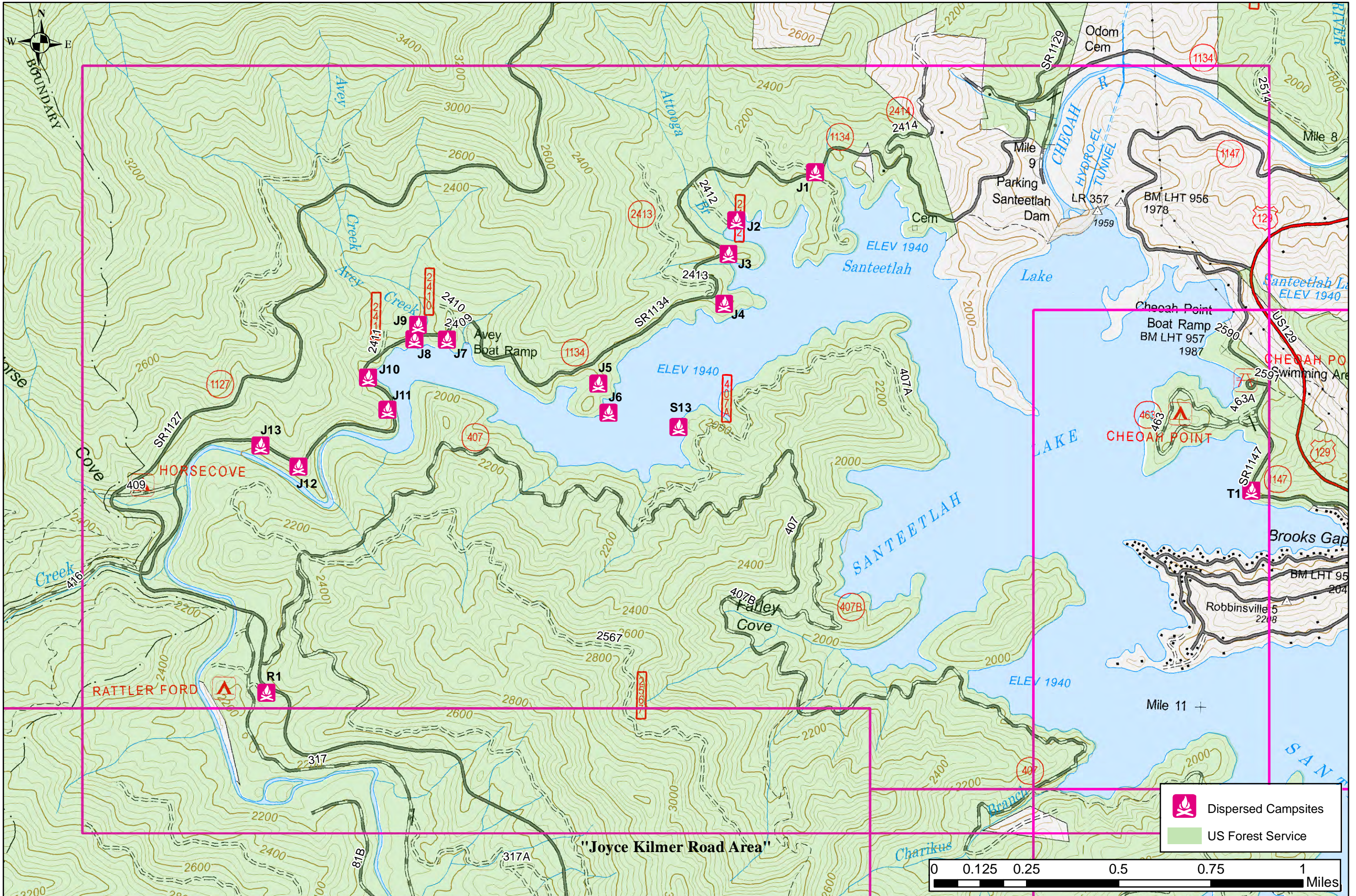
Disclaimer



The USDA Forest Service uses the most current and complete data available. GIS data and product accuracy may vary. Using GIS products for purposes other than those for which they were intended may yield inaccurate or misleading results. The USDA Forest Service reserves the right to correct, update, modify, or replace GIS products without notification. This map is not a legal land line or ownership document. Public lands are subject to change and leasing, and may have access restrictions; check with local offices. Obtain permission before entering private land.

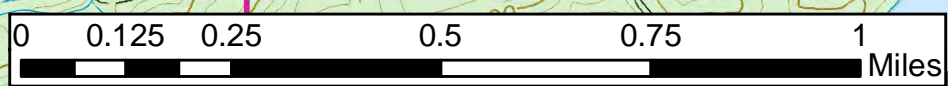
Legend

-  Dispersed Campsites
-  FS Roads

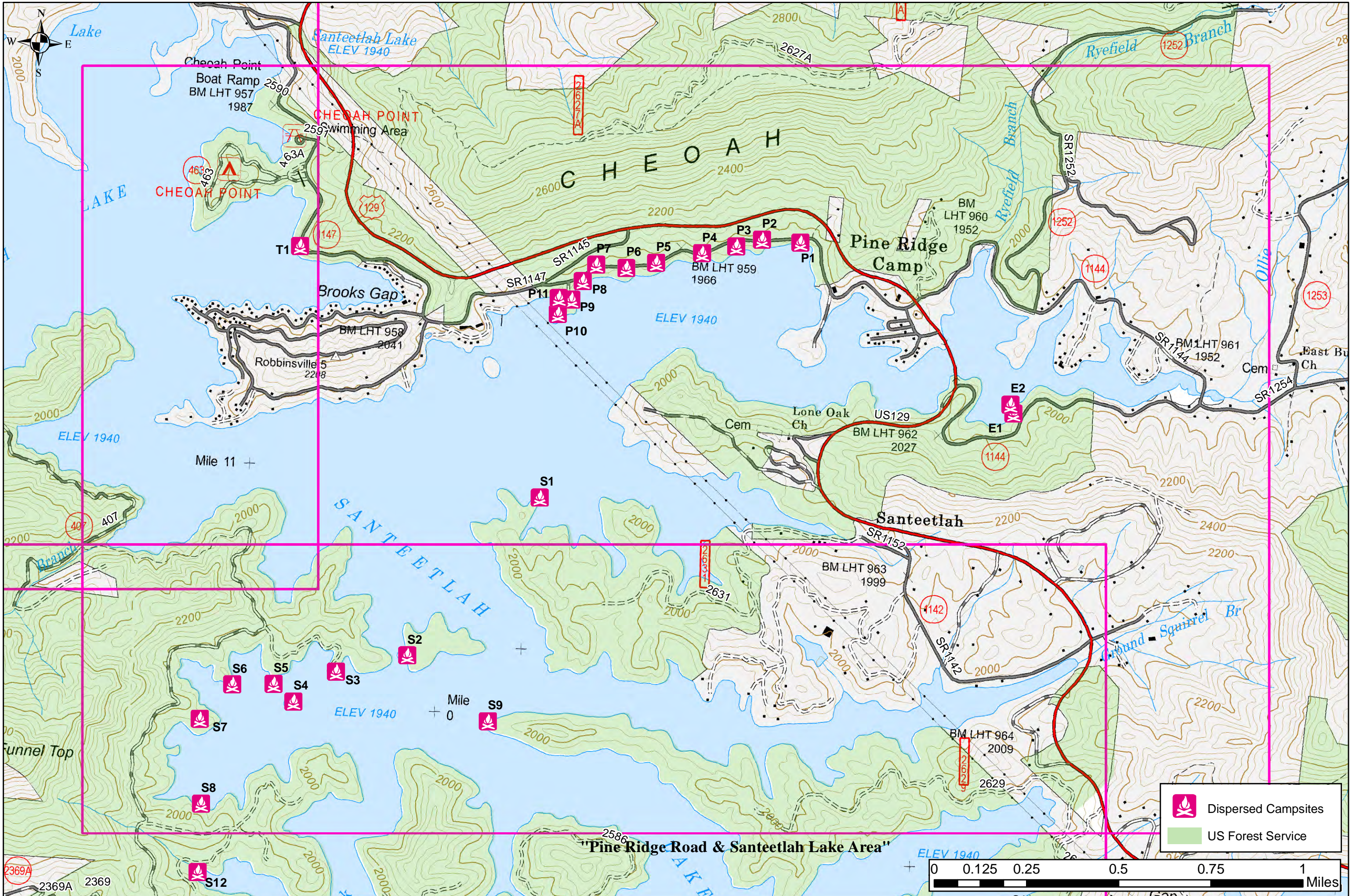






 Dispersed Campsites
 US Forest Service

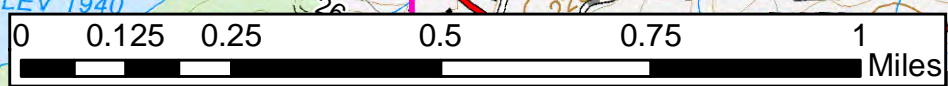


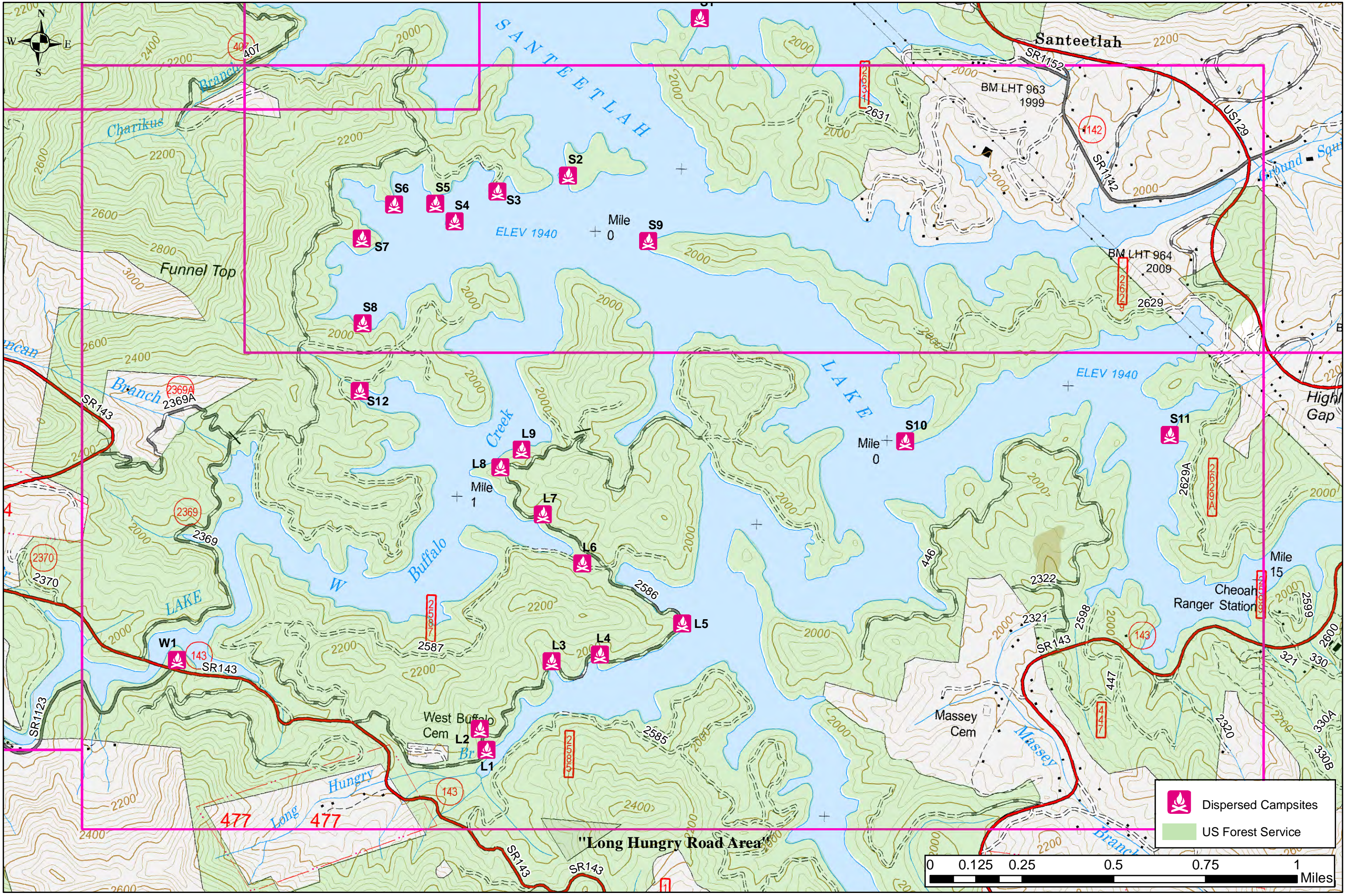
"Joyce Kilmer Road Area"





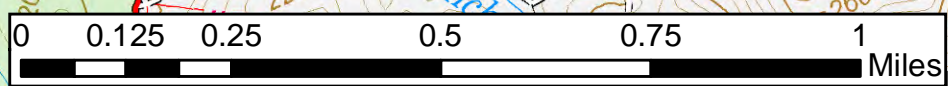
"Pine Ridge Road & Santeetlah Lake Area"

 Dispersed Campsites
 US Forest Service

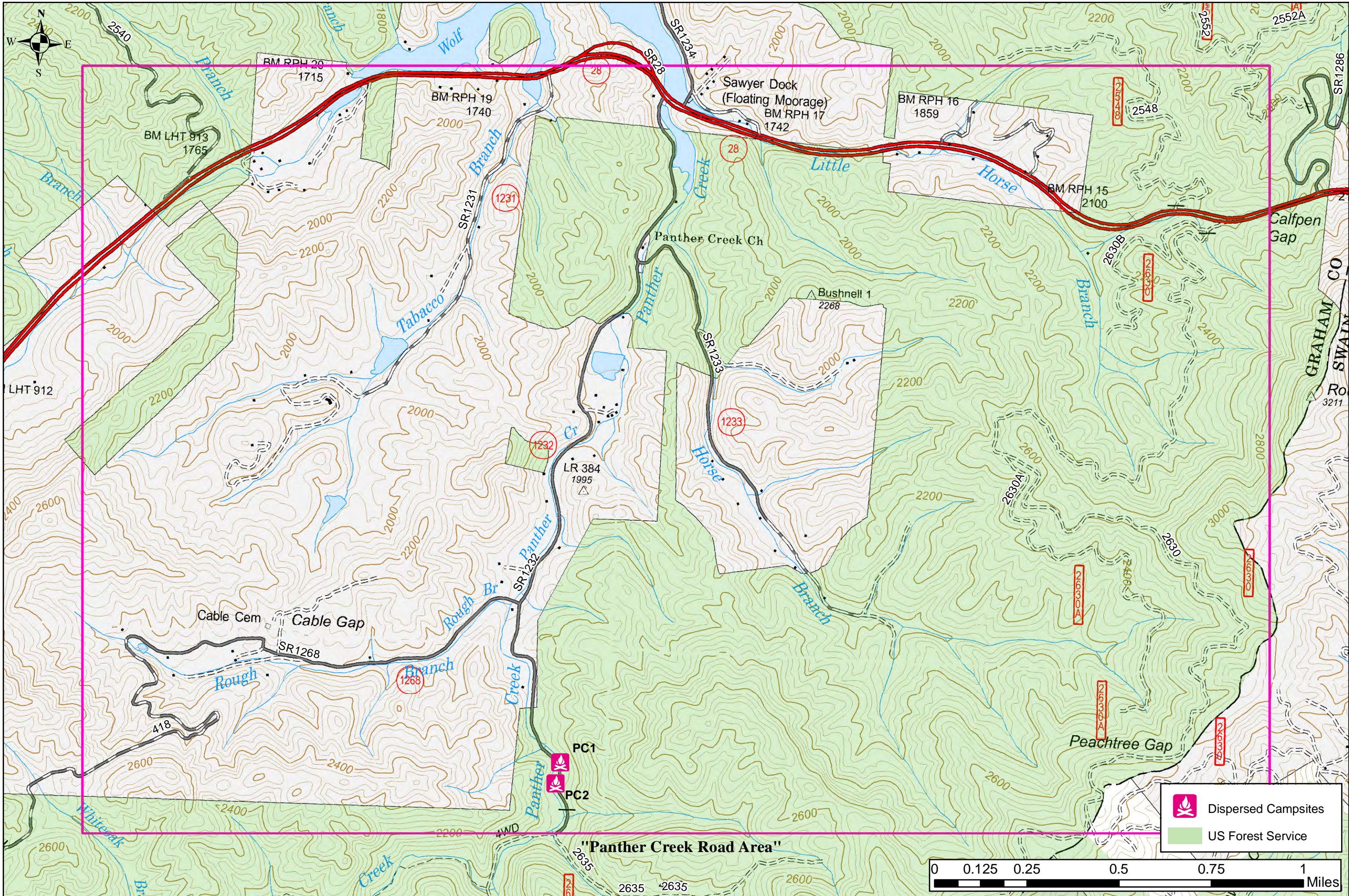






 Dispersed Campsites
 US Forest Service



"Long Hungry Road Area"



 Dispersed Campsites
 US Forest Service

