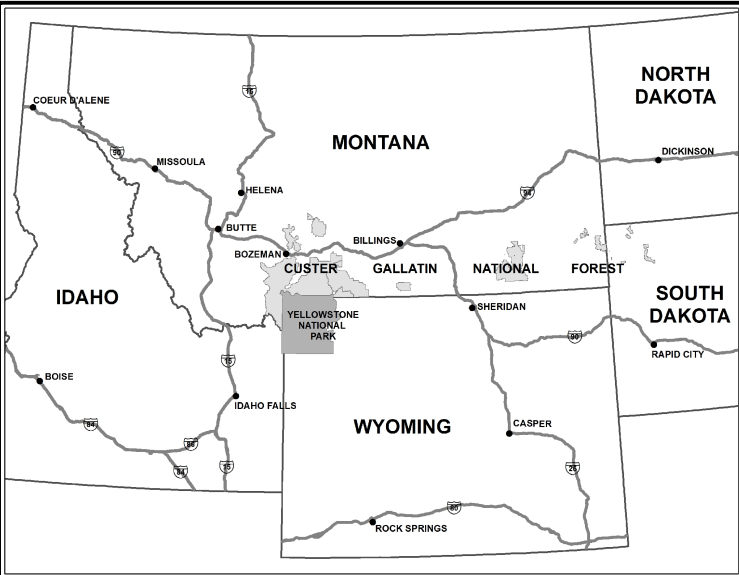




Motor Vehicle Use Map Custer Gallatin National Forest

VICINITY MAP



INFORMATION SOURCES

CUSTER GALLATIN NATIONAL FOREST SUPERVISOR'S OFFICE
3710 Fallon Street, Suite C
Bozeman, MT 59711
Phone: (406) 587-6701

BOZEMAN RANGER DISTRICT
3710 Fallon Street, Suite C
Bozeman, MT 59716
Phone: (406) 522-2520 (Voice & TDD)

YELLOWSTONE RANGER DISTRICT
5242 Highway 89 South
Livingston, MT 59047
Phone: (406) 222-1892 (Voice & TDD)

GARDNER RANGER DISTRICT
P.O. Box 5, Highway 89 South
Gardiner, MT 59030
Phone: (406) 848-7375 (Voice & TDD)

HEBGEN LAKE RANGER DISTRICT
P.O. Box 520, 331 Highway 191 North
West Yellowstone, MT 59158
Phone: (406) 823-6961 (Voice & TDD)

BEARTOOTH RANGER DISTRICT
6811 Highway 212
Red Lodge, MT 59068
Phone: (406) 446-2103 (Voice & TDD)

BLANKET STATEMENTS FOR TRAVEL MANAGEMENT

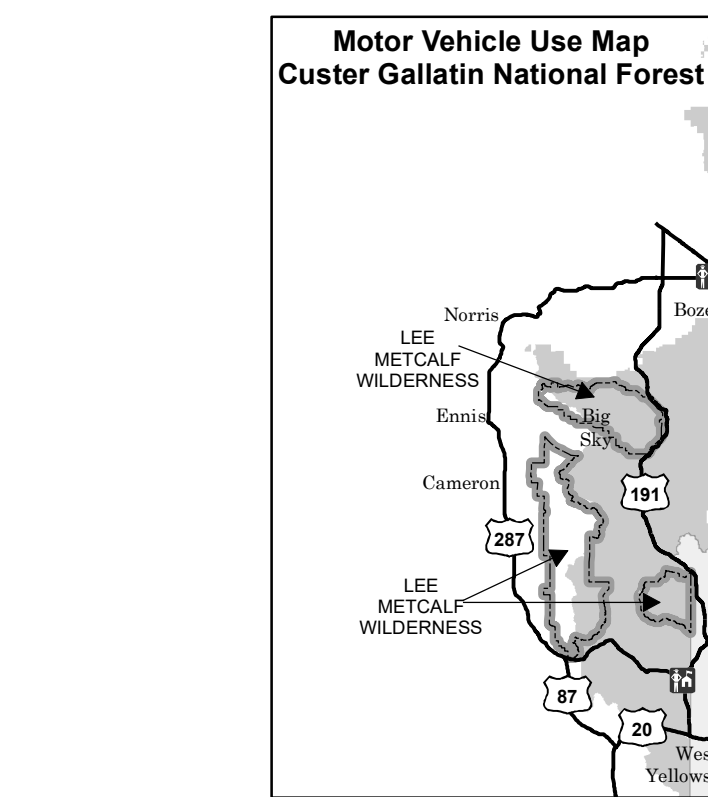
In areas along designated motor vehicle routes where general dispersed camping with motor vehicles is not allowed, a small number of designated dispersed campsites have been marked on-the-ground.

There are numerous short designated motor vehicle routes around the forest that are sometimes too small to display. These routes are signed on the ground with route numbers.

On the Custer Gallatin National Forest, designated motorized TRAILS open to wheeled vehicles less than 50 inches in width are ONLY open to OHVs and MOTORCYCLES that meet the following criteria:

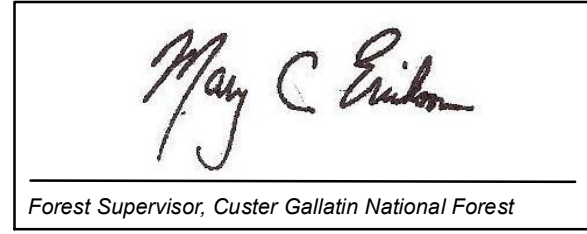
OHVs are defined as: motorized, wheeled trail vehicles that are less than 50 inches in width at the widest point on the vehicle.

Motorcycles are defined as: motorized, wheeled trail vehicles that are less than 50 inches in width at the widest point on the vehicle, with a maximum of two wheels in-line with the direction of travel.



PURPOSE AND CONTENTS OF THIS MAP

The designations shown on this motor vehicle use map (MVUM) were made by the responsible official pursuant to 36 CFR 212.51, are effective as of the date on the front cover of this MVUM, and will remain in effect until superseded by the next MVUM.



It is the responsibility of the user to acquire the current MVUM. The MVUM shows the National Forest System roads, trails and areas on National Forest System Lands in the Yellowstone and Gardiner Ranger Districts that are designated for motor vehicle use pursuant to 36 CFR 212.51.

Designation of a road, trail, or area for motor vehicle use by a particular class of vehicle under 36 CFR 212.51 should not be interpreted as encouraging or inviting use, or implying that the road, trail, or area is passable, actively maintained, or safe for travel.

This motor vehicle use map identifies those roads, trails, and areas designated for the motor vehicle use under 36 CFR 212.51 for the purpose of enforcing the prohibition at 36 CFR 261.13. This is a limited purpose.

These designations apply only to National Forest System roads, National Forest System trails, and areas on National Forest System lands.

PROHIBITIONS

It is prohibited to possess or operate a motor vehicle on National Forest System lands on the CUSTER GALLATIN NATIONAL FOREST other than in accordance with these designations (36 CFR 261.13).

Violations of 36 CFR 261.13 are subject to a fine of up to \$5,000 or imprisonment for up to 6 months or both (18 U.S.C. 3571(e)). This prohibition applies regardless of the presence or absence of signs.

This map does not display nonmotorized users, over-snow uses, or other facilities and attractions on the CUSTER GALLATIN NATIONAL FOREST. Obtain forest visitor information from the local national forest office.

Designated roads, trails, and areas may also be subject to temporary, emergency closures. As a visitor, you must comply with signs notifying you of such restrictions. A national forest may issue an order to close a road, trail, or area on a temporary basis to protect the life, health or safety of forest visitors or the natural or cultural resources in these areas.

The designation "road or trail open to all motor vehicles" does not supersede State traffic law.

WEBSITE

This map and other Custer Gallatin National Forest Motor Vehicle Use Maps are available for download at this website: www.fs.usda.gov/main/custer/gallatin/maps-pubs



OPERATOR RESPONSIBILITIES

Operating a motor vehicle on National Forest System roads, National Forest System trails, and in areas on National Forest System lands carries a greater responsibility than operating that vehicle in a city or other developed setting. Not only must you know and follow all applicable traffic laws, you need to show concern for the environment, as well as other forest users.

Motor vehicle use, especially off-highway vehicle use, involves inherent risks that may cause property damage, serious injury, and possibly death to participants. Drive cautiously and anticipate rough surfaces and features, such as snow, mud, vegetation, and water crossings common to remote driving conditions.

Much of the Custer Gallatin National Forest is remote. Medical assistance may not be readily available. Cellular telephones do not work in many areas of the Custer Gallatin National Forest. Take adequate food, water, first-aid supplies, and other equipment appropriate for the conditions and expected weather.

ALWAYS REMEMBER TO RESPECT PRIVATE LAND! PROTECT YOUR PRIVACY! STAY ON DESIGNATED ROADS AND TRAILS AND IN DESIGNATED AREAS.

Read and understand this map in its entirety. If you have questions please contact the CUSTER GALLATIN NATIONAL FOREST for clarification.

As a motor vehicle operator on a National Forest System road, trail, or area, you must comply with this map, as well as all Federal, State, and local laws and regulations. Compliance with these rules is your responsibility.

Designated Motorized Routes (AB West)

Table with columns: Route Number, Route Name, Dates Allowed, Beginning Mile Post, Ending Mile Post. Lists various routes like Mission Meadow Road, Suce Creek Road, Pine Creek Road, etc.

Trails and Gated Roads Open to Wheeled (Non-Tracke) Vehicles 50 Inches or Less in Width, with Seasonal Designation (OHVs and Motorcycles Only)

Table with columns: Route Number, Route Name, Dates Allowed, Beginning Mile Post, Ending Mile Post. Lists routes like Arrastra Creek Road, Barbara Ann Mine Road, etc.

LEGEND

- Legend items: Roads Open to Highway Legal Vehicles Only, Roads Open to All Vehicles, Trails Open to Motorcycles Only, Trails Open to Wheeled Vehicles 50" or Less in Width, Dispersed Camping, Seasonal Designation, Interstate, Other Public Roads, Other Public Trails, Motorized Trail Access, FS Campgrounds, Peaks, Forest or Unit Boundary, National Forest System Lands, Non-National Forest System Lands within this National Forest, Wilderness, Lakes.

EXPLANATION OF LEGEND ITEMS

Roads Open to Highway Legal Vehicle Only: These roads are open only to motor vehicles licensed under State law for general operation on all public roads within the State.

Roads Open to All Vehicles: These roads are open to all motor vehicles, including smaller off highway vehicles that may not be licensed for highway use (but not to oversize or overweight vehicles under State traffic law).

Trails Open to Motorcycles Only: These trails are open only to motorcycles. Sidecars are not permitted.

Trails Open to Wheeled Vehicles 50 inches or Less in Width: These trails are open only to wheeled, motor vehicles less than 50 inches in width at the widest point on the vehicle.

Seasonal Designation: This symbol, used in conjunction with one of the other road or trail symbols, indicates that the road or trail is open only during certain portions of the year. Refer to the Seasonal and Special Designation Table for further instructions.

Dispersed Camping: This symbol is used along with a designated road or trail to indicate that limited cross-country motor vehicle use is allowed within 300 feet of that route, solely for the purpose of dispersed camping.

Motorized Trail Access: This symbol indicates a trail head for access to a motorized route. Not all motorized routes have trail heads and those that do may range from primitive to developed.

