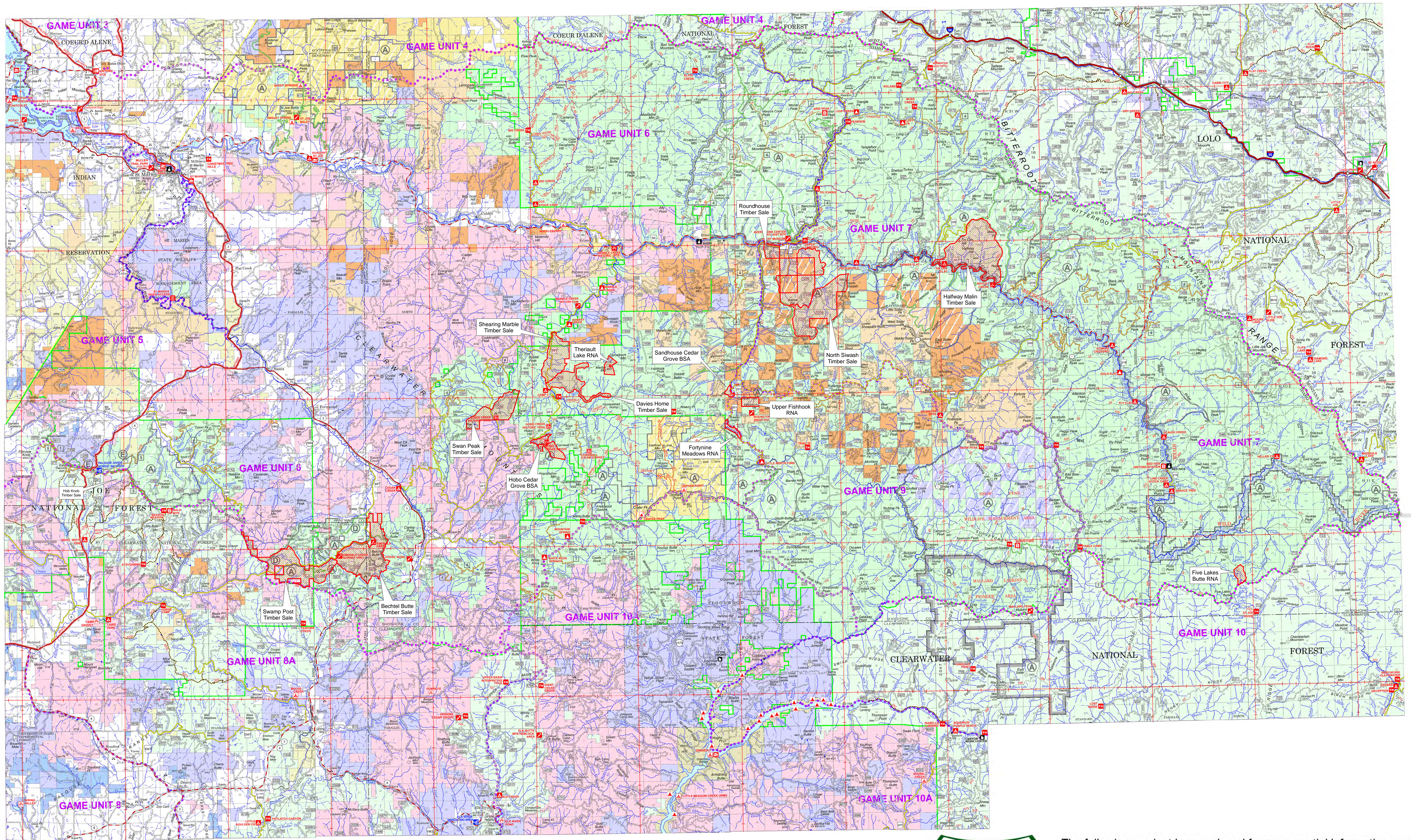


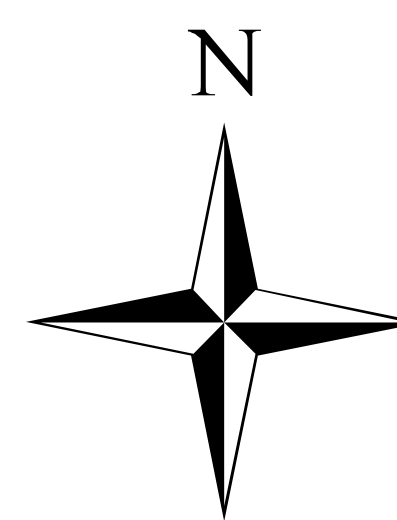
St Joe Ranger District Firewood Closure Map 2023



Legend

 Area Closed to Firewood Cutting

Date: 1/3/2023

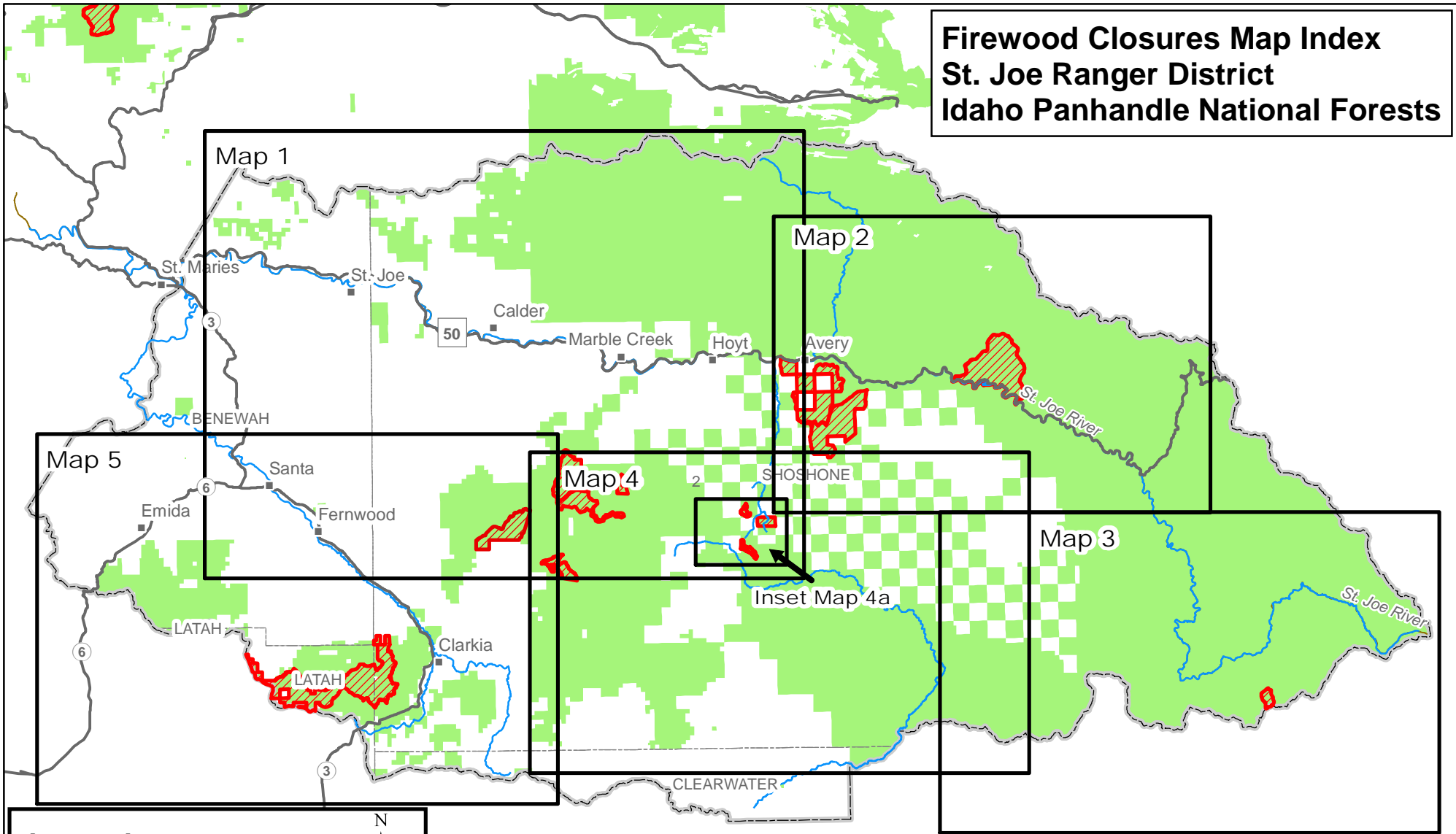


10 5 0 10 Miles



The following product is reproduced from geospatial information prepared by the U.S. Department of Agriculture, Forest Service. GIS data and product accuracy may vary. They may be: developed from sources of differing accuracy, accurate only at certain scales, based on modeling or interpretation, incomplete while being created or revised, etc. Using GIS products for purposes other than those for which they are created may yield inaccurate or misleading results. The Forest Service reserves the right to correct, update, modify or replace GIS products without notification. For more information, contact the St. Joe Ranger District at (208) 245-2531.

Firewood Closures Map Index St. Joe Ranger District Idaho Panhandle National Forests



Legend

-  USFS Land
-  Area Closed to Firewood Cutting
-  Cities
-  Main Roads
-  Rivers and Streams



Date: 1/3/2023

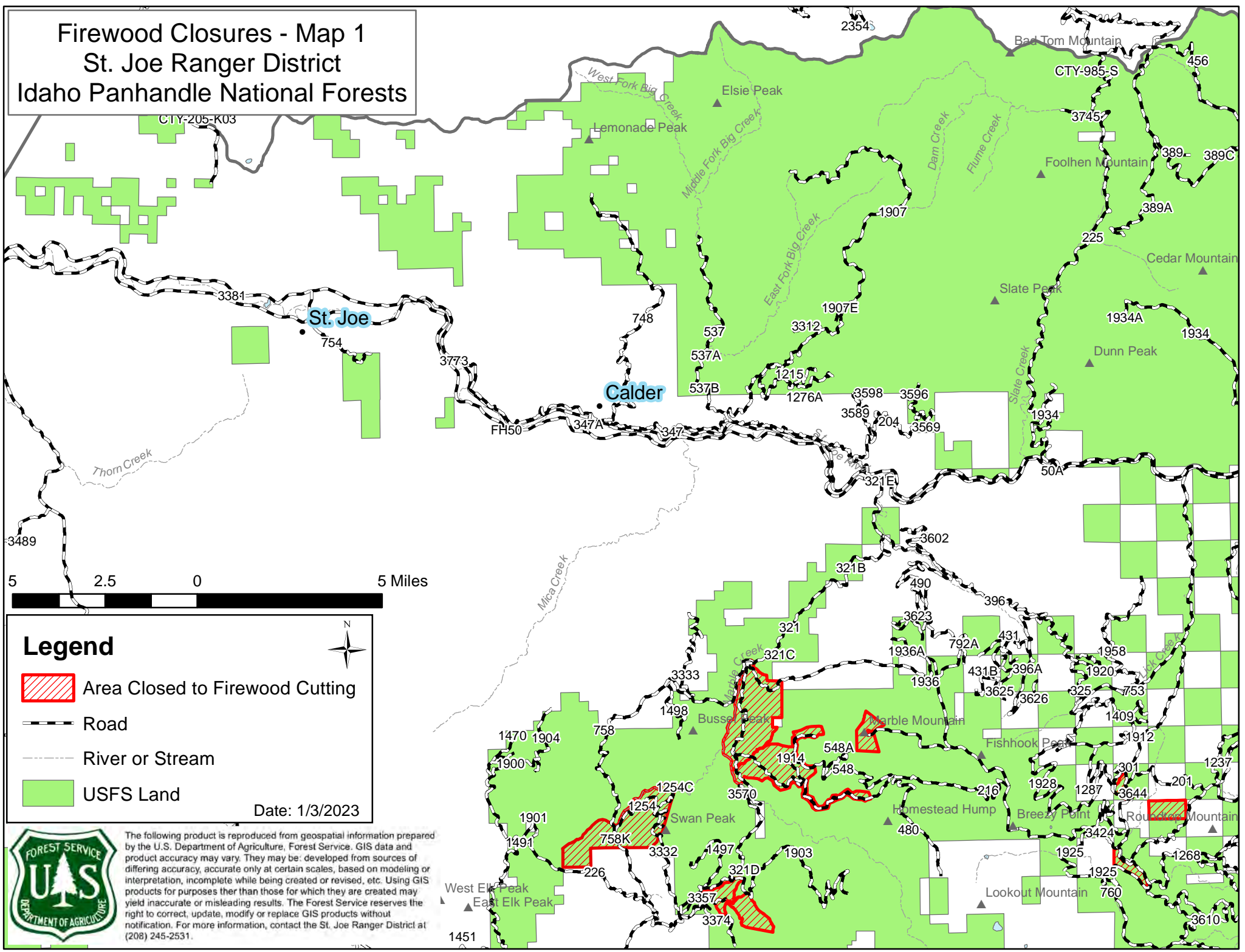


The following product is reproduced from geospatial information prepared by the U.S. Department of Agriculture, Forest Service. GIS data and product accuracy may vary. They may be developed from sources of differing accuracy, accurate only at certain scales, based on modeling or interpretation, incomplete while being created or revised, etc. Using GIS products for purposes other than those for which they are created may yield inaccurate or misleading results. The Forest Service reserves the right to correct, update, modify or replace GIS products without notification. For more information, contact the St. Joe Ranger District at (208) 245-2531.

Firewood Closures - Map 1

St. Joe Ranger District

Idaho Panhandle National Forests



Legend

-  Area Closed to Firewood Cutting
-  Road
-  River or Stream
-  USFS Land

Date: 1/3/2023

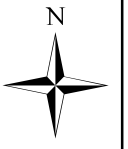


The following product is reproduced from geospatial information prepared by the U.S. Department of Agriculture, Forest Service. GIS data and product accuracy may vary. They may be developed from sources of differing accuracy, accurate only at certain scales, based on modeling or interpretation, incomplete while being created or revised, etc. Using GIS products for purposes other than those for which they are created may yield inaccurate or misleading results. The Forest Service reserves the right to correct, update, modify or replace GIS products without notification. For more information, contact the St. Joe Ranger District at (208) 245-2531.

Firewood Closures- Map 2 St. Joe Ranger District Idaho Panhandle National Forests

Legend

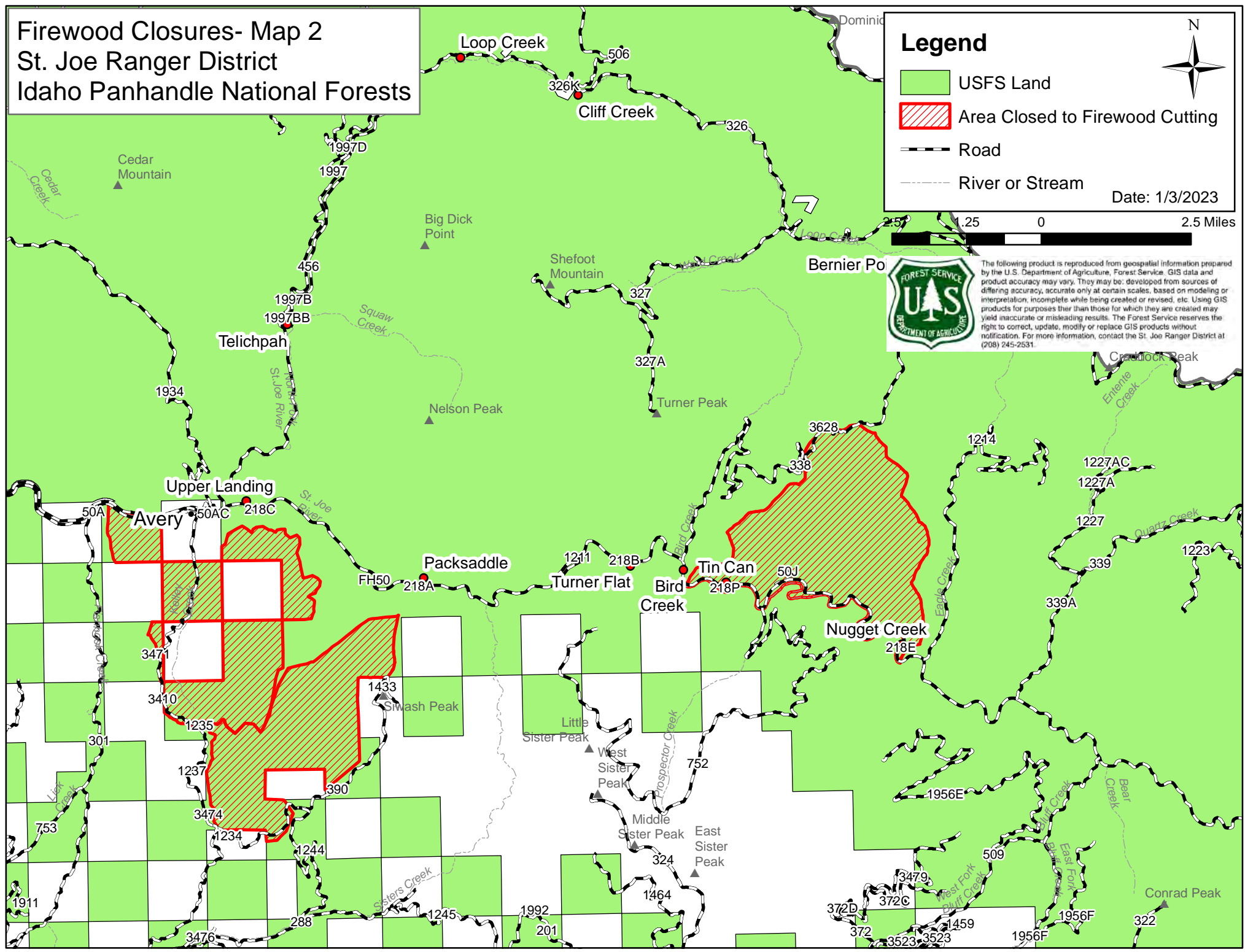
- USFS Land
- Area Closed to Firewood Cutting
- Road
- River or Stream



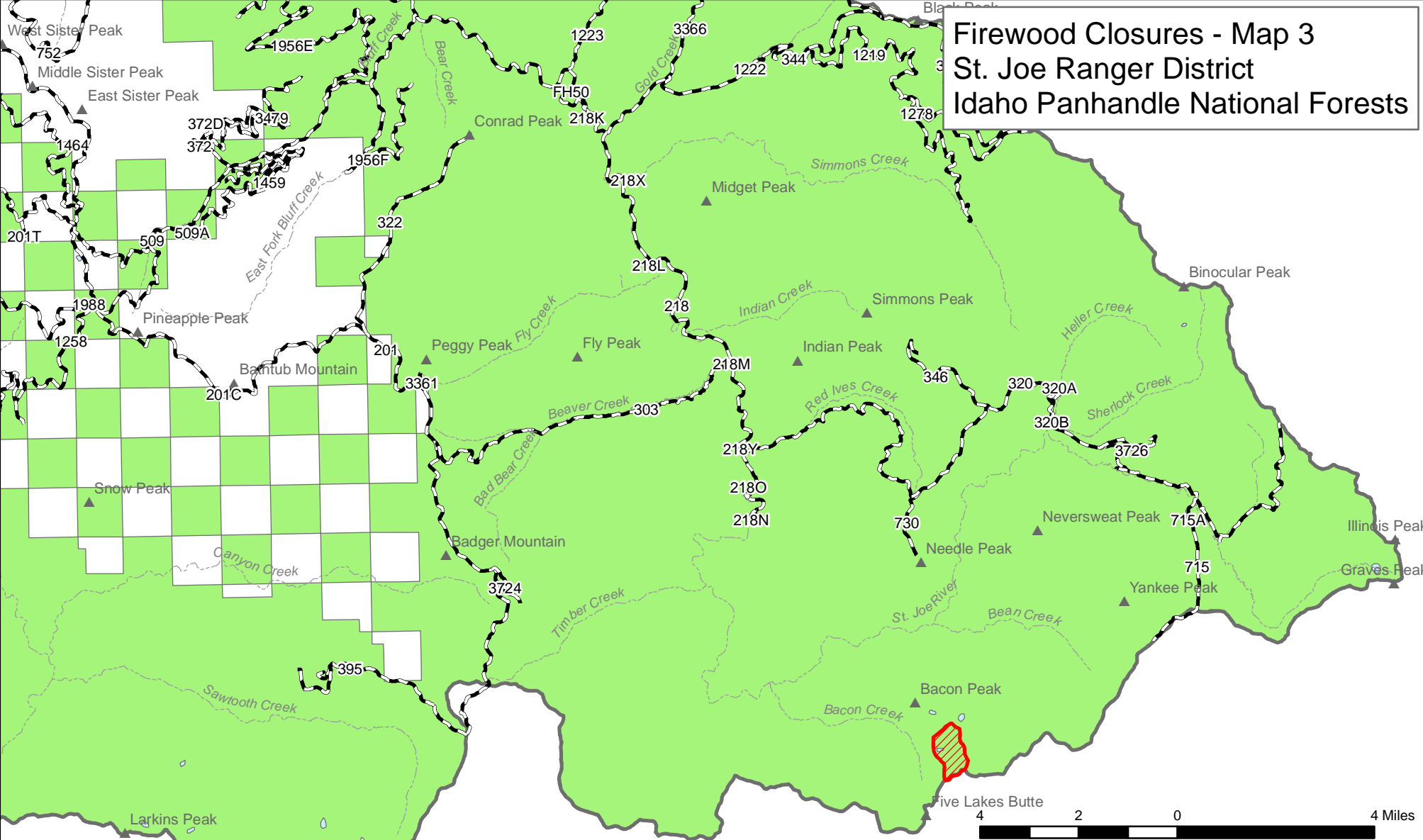
Date: 1/3/2023







The following product is reproduced from geospatial information prepared by the U.S. Department of Agriculture, Forest Service. GIS data and product accuracy may vary. They may be developed from sources of differing accuracy, accurate only at certain scales, based on modeling or interpretation, incomplete while being created or revised, etc. Using GIS products for purposes other than those for which they are created may yield inaccurate or misleading results. The Forest Service reserves the right to correct, update, modify or replace GIS products without notification. For more information, contact the St. Joe Ranger District at (208) 245-2531.



Firewood Closures - Map 3 St. Joe Ranger District Idaho Panhandle National Forests



Legend

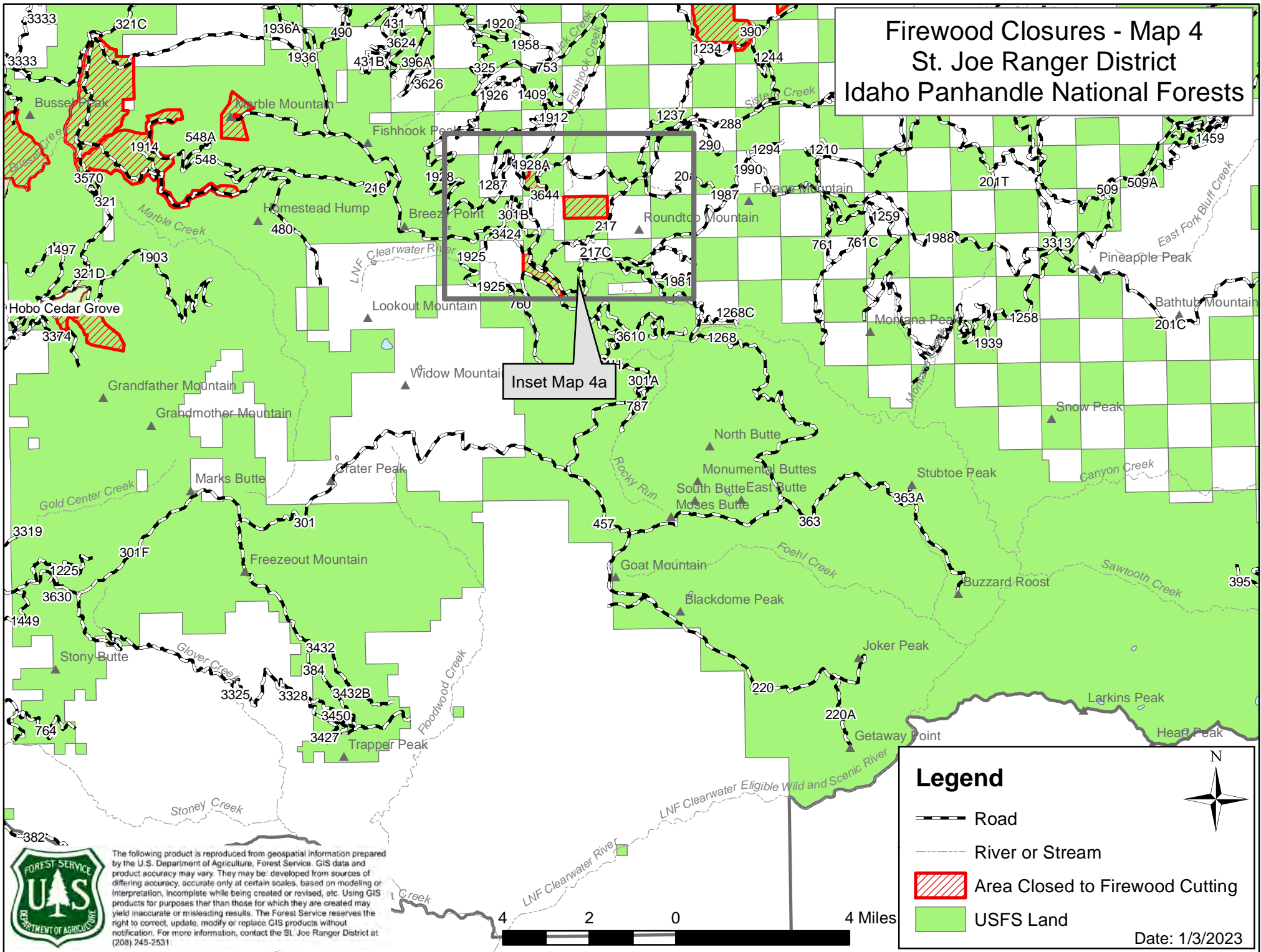
-  Road
-  River or Stream
-  Area Closed to Firewood Cutting
-  USFS Land

Date: 1/3/2023







The following product is reproduced from geospatial information prepared by the U.S. Department of Agriculture, Forest Service. GIS data and product accuracy may vary. They may be developed from sources of differing accuracy, accurate only at certain scales, based on modeling or interpretation, incomplete while being created or revised, etc. Using GIS products for purposes other than those for which they are created may yield inaccurate or misleading results. The Forest Service reserves the right to correct, update, modify or replace GIS products without notification. For more information, contact the St. Joe Ranger District at (208) 245-2531.

Firewood Closures - Map 4 St. Joe Ranger District Idaho Panhandle National Forests



Inset Map 4a

Legend

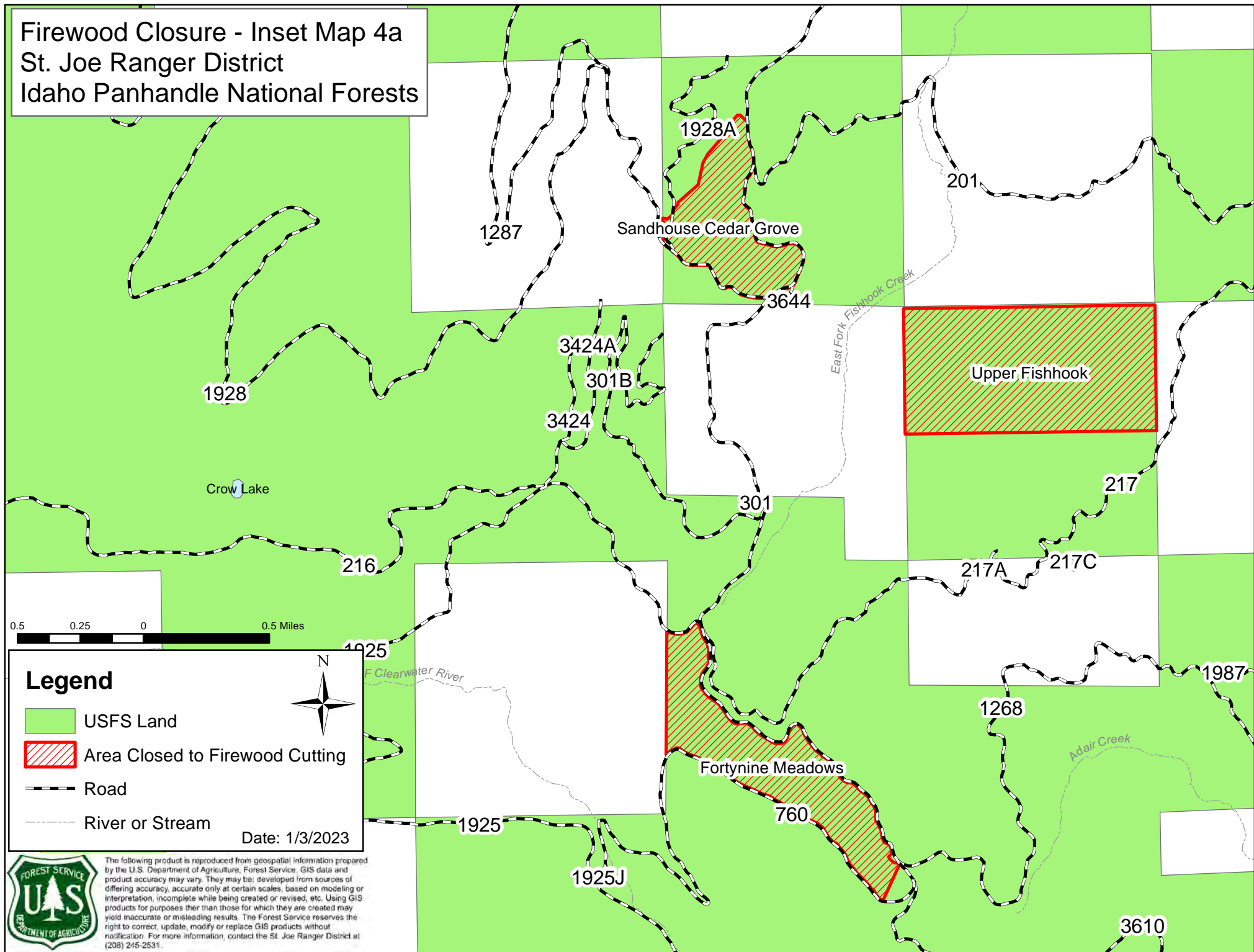
-  Road
-  River or Stream
-  Area Closed to Firewood Cutting
-  USFS Land



The following product is reproduced from geospatial information prepared by the U.S. Department of Agriculture, Forest Service. GIS data and product accuracy may vary. They may be developed from sources of differing accuracy, accurate only at certain scales, based on modeling or interpretation, incomplete while being created or revised, etc. Using GIS products for purposes other than those for which they are created may yield inaccurate or misleading results. The Forest Service reserves the right to correct, update, modify or replace GIS products without notification. For more information, contact the St. Joe Ranger District at (208) 245-2531.

Date: 1/3/2023

Firewood Closure - Inset Map 4a
St. Joe Ranger District
Idaho Panhandle National Forests



Legend

- USFS Land
- Area Closed to Firewood Cutting
- Road
- River or Stream

Date: 1/3/2023

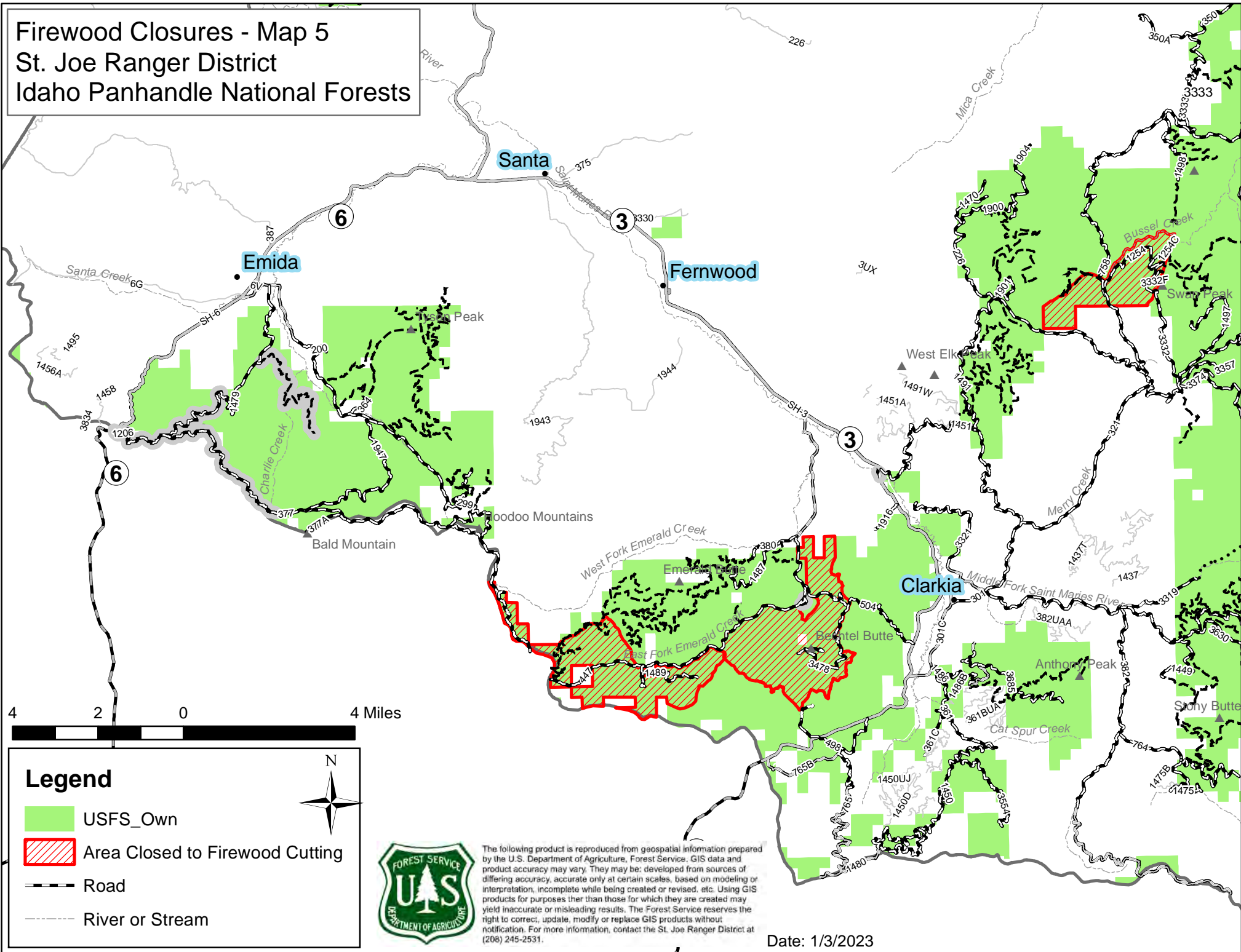


The following product is reproduced from geospatial information prepared by the U.S. Department of Agriculture, Forest Service. GIS data and product accuracy may vary. They may be developed from sources of differing accuracy, accurate only at certain scales, based on modeling or interpretation, incomplete while being created or revised, etc. Using GIS products for purposes other than those for which they are created may yield inaccurate or misleading results. The Forest Service reserves the right to correct, update, modify or replace GIS products without notification. For more information, contact the St. Joe Ranger District at (208) 245-2531.

Firewood Closures - Map 5

St. Joe Ranger District

Idaho Panhandle National Forests



Legend

- USFS_Own
- Area Closed to Firewood Cutting
- Road
- River or Stream



The following product is reproduced from geospatial information prepared by the U.S. Department of Agriculture, Forest Service. GIS data and product accuracy may vary. They may be developed from sources of differing accuracy, accurate only at certain scales, based on modeling or interpretation, incomplete while being created or revised, etc. Using GIS products for purposes other than those for which they are created may yield inaccurate or misleading results. The Forest Service reserves the right to correct, update, modify or replace GIS products without notification. For more information, contact the St. Joe Ranger District at (208) 245-2531.

Date: 1/3/2023