

Aerial Insect and Disease Survey 2022

Significant Pest/Disease Activity

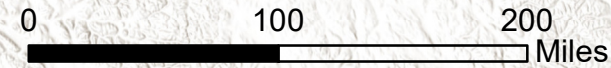
-  Western Blackheaded Budworm
684,860 Acres
-  Hemlock Mortality
73,542 Acres
-  Spruce Beetle
48,778 Acres
-  Aspen Defoliation
39,042 Acres
-  Birch Defoliation
22,596 Acres
-  Alder Defoliation
12,669 Acres
-  Yellow-Cedar Decline
11,677 Acres

Land Cover

-  Conifer Forest
-  Mixed/Broadleaf Forest
-  Inland Lake
-  Survey route

Note: Activity polygons are enhanced with a large border to aid visualization.

Many of the most destructive diseases are not represented on the map due to these agents not being detectable from aerial surveys.

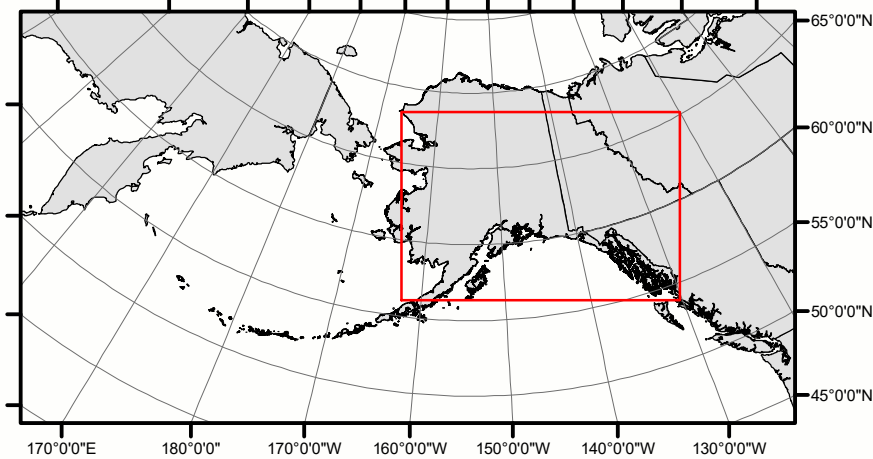
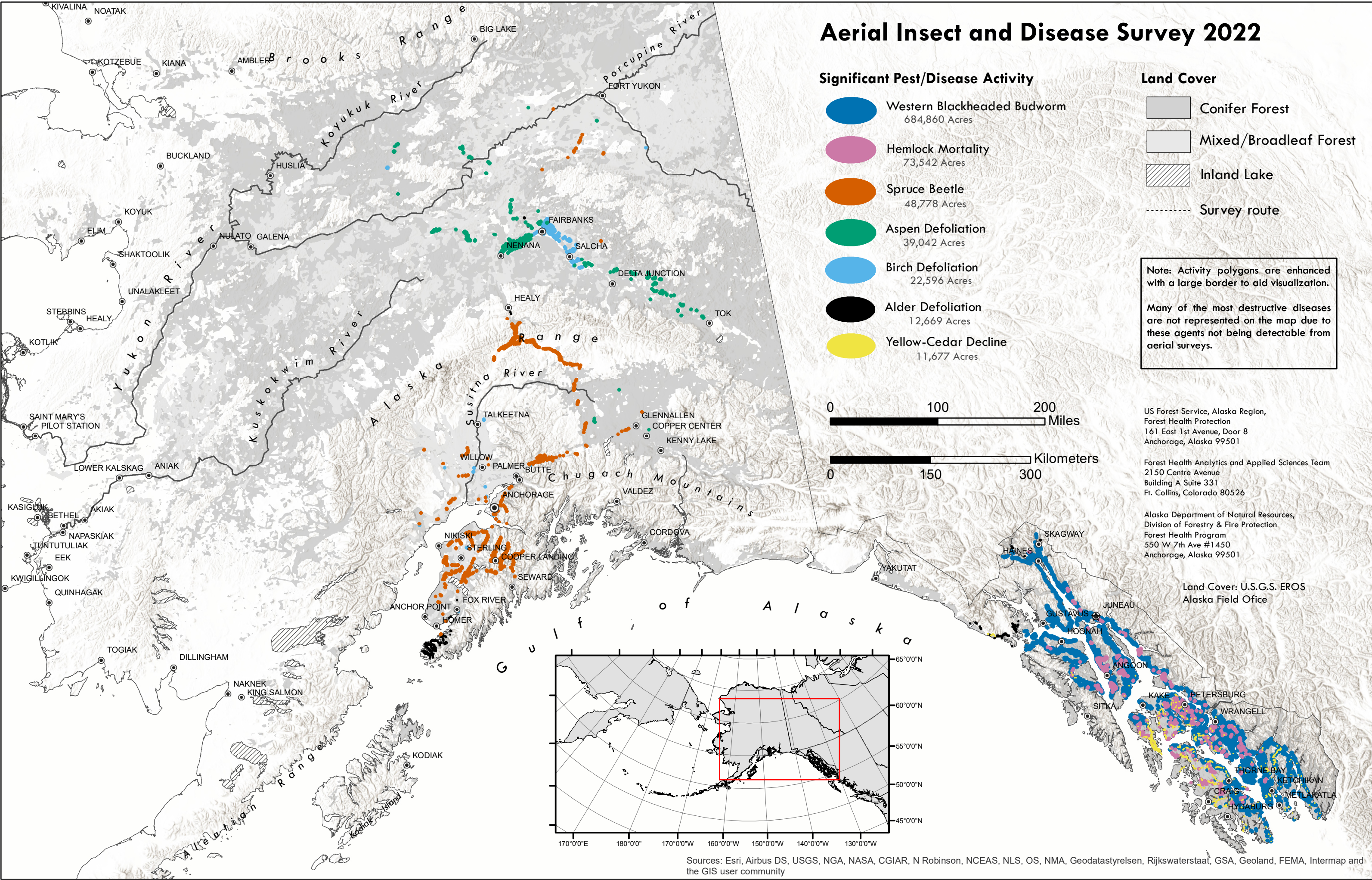


US Forest Service, Alaska Region,
Forest Health Protection
161 East 1st Avenue, Door 8
Anchorage, Alaska 99501

Forest Health Analytics and Applied Sciences Team
2150 Centre Avenue
Building A Suite 331
Ft. Collins, Colorado 80526

Alaska Department of Natural Resources,
Division of Forestry & Fire Protection
Forest Health Program
550 W 7th Ave #1450
Anchorage, Alaska 99501


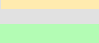
Land Cover: U.S.G.S. EROS
Alaska Field Office



Sources: Esri, Airbus DS, USGS, NGA, NASA, CGIAR, N Robinson, NCEAS, NLS, OS, NMA, Geodatastyrelsen, Rijkswaterstaat, GSA, Geoland, FEMA, Intermap and the GIS user community

Aerial Detection Survey Flight Paths 2022

 Surveyed Area

Management Agency	Surveyed Acres
 State of Alaska	6,227,000
 US Forest Service	4,279,000
 Native	2,183,000
 US Fish and Wildlife Service	1,136,000
 Bureau of Land Management	975,000
 National Park Service	783,000
 Local Government and Private	293,000
 Department of Defense	227,000
 Wild and Scenic River	152,000

Total Acres Surveyed 16,314,000



US Forest Service, Alaska Region,
Forest Health Protection
161 East 1st Avenue, Door 8
Anchorage, Alaska 99501

Forest Health Analytics and Applied Sciences Team
2150 Centre Avenue
Building A Suite 331
Ft. Collins, Colorado 80526

Alaska Department of Natural Resources,
Division of Forestry & Fire Protection
Forest Health Program
550 W 7th Ave #1450
Anchorage, Alaska 99501

