

FOREST ORDER NO. 05-04-53-22-13  
USDA FOREST SERVICE  
INYO NATIONAL FOREST  
B & B MINE AND MILL SITE AREA CLOSURE

Pursuant to 16 U.S.C § 551 and 36 C.F.R. § 261.50(a), and to provide for public safety, the following acts are prohibited within the Inyo National Forest. This Order is effective from December 12, 2022, through December 12, 2024.

1. Going into or being upon the B&B Mine and Mill Site Closure Area, as shown on Exhibit A and described in Exhibit B, with the exception of vehicular travel along Forest Service Road 2N06 as described in Prohibitions #2 and #3 below. 36 C.F.R § 261.53(e).
2. Being on Forest Road 2N06 between its intersection with Forest Road 2N07 and its intersection with the point at latitude 37.89018, longitude -118.24722 (Pt. 7 on Exhibit A), except that persons in fully enclosed vehicles may traverse this stretch of Forest Road 2N06 provided they do not stop, leave their vehicles, leave the roadway, or exceed the speed limit of 5 miles per hour. 36 C.F.R. § 261.54(a), (d), (e).

Pursuant to 36 C.F.R. § 261.50(e), the following persons are exempt from this Order:

1. Persons with an approved Forest Service Permit No. FS-7700-48 (Permit for Use of Roads, Trails, or Areas Restricted by Regulation or Order), specifically exempting them from this Order.
2. Any Federal, State, or local officer, or member of an organized rescue or fire-fighting force in the performance of an official duty.





These prohibitions are in addition to the general prohibitions contained in 36 C.F.R. Part 261, Subpart A. A violation of these prohibitions is punishable by a fine of not more than \$5,000 for an individual or \$10,000 for an organization, or imprisonment for not more than six months, or both. 16 U.S.C. § 551 and 18 U.S.C. §§ 3559, 3571, and 3581.

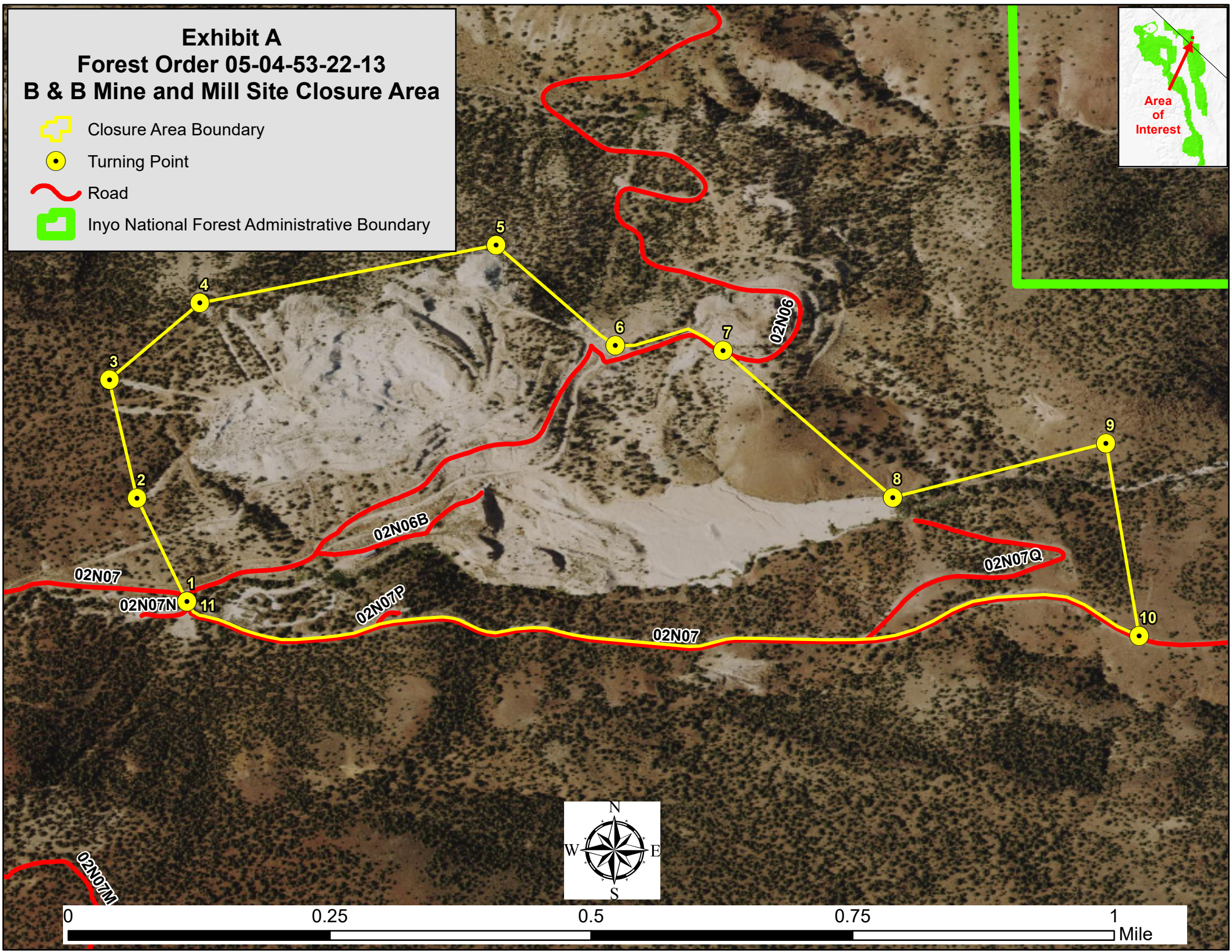
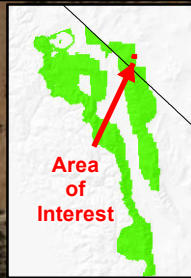
Executed in Bishop, California, this 12<sup>th</sup> day of December, 2022.

---

SARAH CLAWSON  
Acting Forest Supervisor  
Inyo National Forest

**Exhibit A**  
**Forest Order 05-04-53-22-13**  
**B & B Mine and Mill Site Closure Area**

-  Closure Area Boundary
-  Turning Point
-  Road
-  Inyo National Forest Administrative Boundary



FOREST ORDER NO. 05-04-53-22-13  
USDA FOREST SERVICE  
INYO NATIONAL FOREST  
B & B MINE AND MILL SITE AREA CLOSURE  
**Exhibit B**

The boundary of the B&B Mine and Mill Site Closure Area begins at the intersection of Trail Canyon Road (Forest 2N07) and Forest Road 2N06 (Pt. 1) at latitude 37.88670, longitude -118.254638; then continues northwest to (Pt. 2) latitude 37.88814, longitude -118.25533; then continues north to (Pt. 3) latitude 37.88978, longitude -118.255714; then continues east/northeast to (Pt. 4) latitude 37.89084, longitude -118.25446; then continues east to (Pt. 5) latitude 37.89164, longitude -118.25036; then continues east/southeast to (Pt. 6) latitude 37.89025, longitude -118.24871; then continues along the north side of Forest Road 2N06 to (Pt. 7) latitude 37.89018, longitude -118.24722; then continues southeasterly to the northern edge of the B&B Dam (Pt. 8) latitude 37.88815, longitude -118.24487; and then continues easterly to (Pt. 9) latitude 37.8889, longitude -118.24192; then turns southeast and continues to the northern shoulder of Trail Canyon Road (2N07) (Pt. 10) latitude 37.88623, longitude -118.24146 and follows the northern shoulder of Trail Canyon Road (2N07) westerly to (Pt. 11) latitude 37.88670, longitude -118.25638, (which is also the starting point), as shown on Exhibit A.