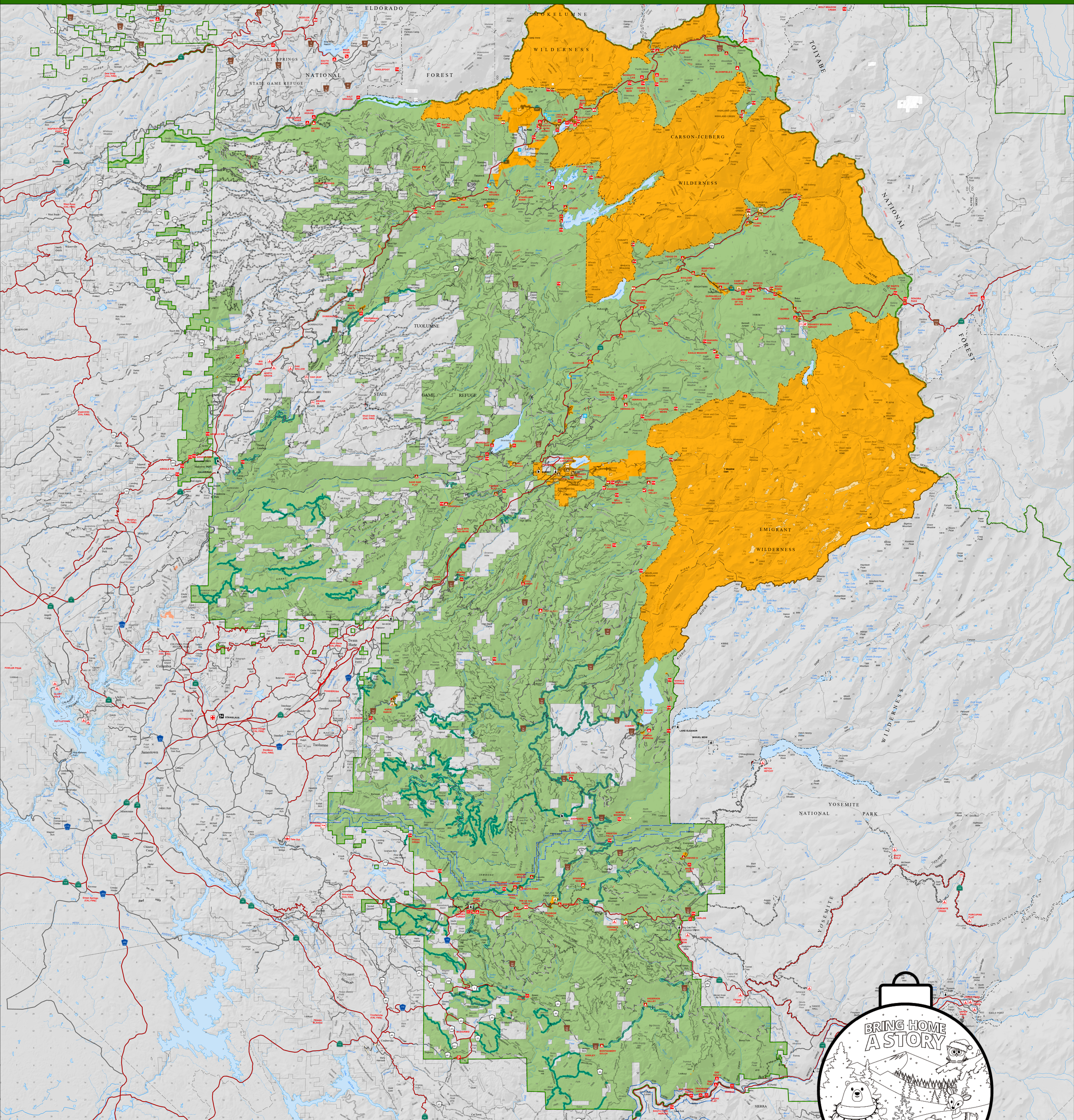




Christmas Tree Cutting

Stanislaus National Forest
2022

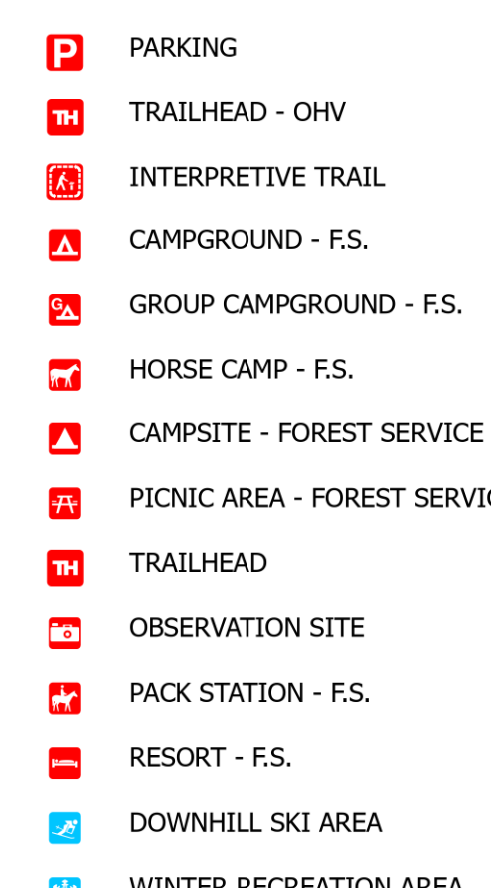
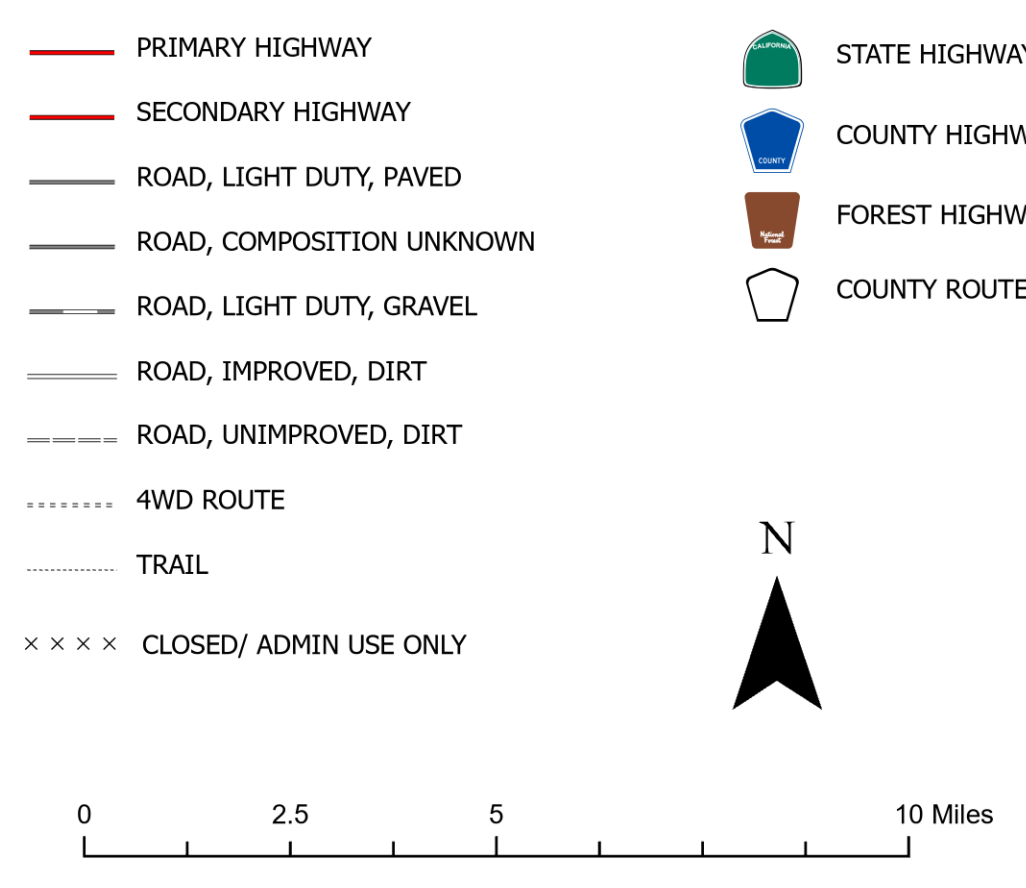


 National Forest Land
OPEN to Christmas Tree Cutting

 National Forest Land
CLOSED to Christmas Tree Cutting

 Other Ownership
CLOSED to Christmas Tree Cutting

 NF Roads and Trails OPEN year round
(All other NF routes CLOSED Dec 15 - Apr 14)



Christmas Tree Cutting Restrictions

1. Permits must be obtained by visiting [Recreation.gov/tree-permits](https://www.recreation.gov/tree-permits)
2. Wheeled motorized vehicles may not be used off of authorized Forest Service roads or motorized trails to harvest Christmas trees
3. Consult the Forest Service Motor Vehicle Use Map (MVUM) for limitations on motorized use of National Forest roads and motorized trails.