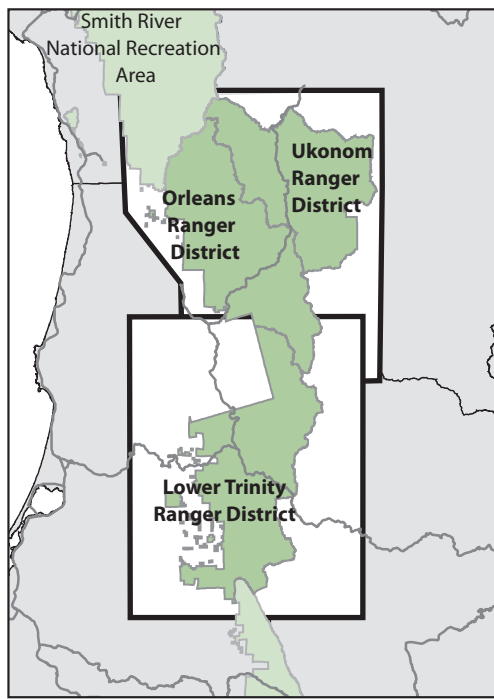


# Six Rivers National Forest Christmas Tree Cutting Map

## Lower Trinity, Orleans & Ukonom Ranger Districts

We hope all of you enjoy your Christmas tree and the experience of cutting it in its natural habitat. Please help to protect and preserve your forest by observing the following regulations:

1. A permit must be purchased before cutting any tree. Permits are to be purchased online from [www.recreation.gov](http://www.recreation.gov) or in-person at a Six Rivers National Forest district office.
2. One tree is allowed per permit sold (2 max per household). Individuals must be 18 or older to purchase a permit.
3. Permits are \$10.00 each. Online purchase has a one-time \$2.50 processing fee. There are no refunds.
4. Your permit must be present when cutting your tree.
5. Cut the tree at least 100 feet from the main road.
6. There is no cutting allowed in wilderness areas, plantations, botanical areas, day-use areas, or developed campgrounds.
7. No cutting within Administrative sites, active timber sale areas, posted "no wood cutting" areas and within 150 feet of campgrounds and developed recreation areas.
8. No cutting within 300 feet of rivers, year-round streams, lakes and natural ponds or 150 feet of seasonal dry stream channels and wet areas.
9. Cut only trees that are 6 inches or less in diameter at the ground level. Cut down the entire tree. Tree "topping" is prohibited.
10. The stump must be no higher than 12 inches from the ground.
11. In addition, California state law prohibits the transportation of more than five (5) trees in any vehicle without a transportation tag issued by the County Sheriff's office (PC 384C). Contact your local Sheriff's office for additional information.



## Six Rivers National Forest Christmas Tree Cutting Map Lower Trinity Ranger District

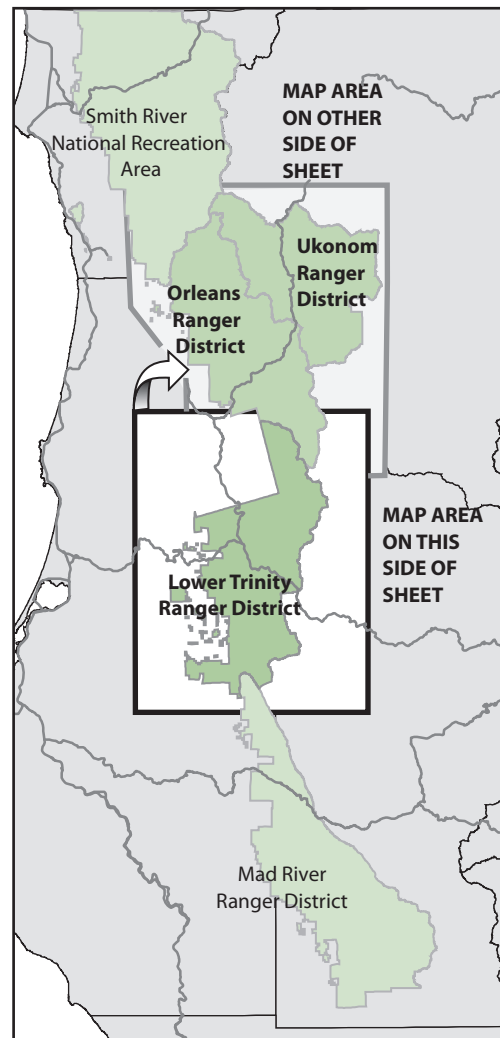
### Where is Cutting allowed?

**Open**  
Cutting is allowed in all areas coded as "Open".

**Restricted**  
Contact the nearest forest service office for restrictions that may apply.

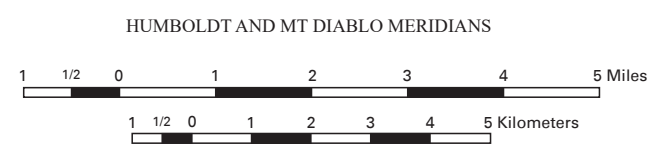
### Motor Vehicle Use

Motor vehicle use on National Forest System Lands is restricted to designated roads and trails. In addition to this map, use a Motor Vehicle Use Map (MVUM) to make sure you are on a designated route, as they are not always signed on the ground. The MVUM also displays uses allowed by vehicle class (highway-legal vehicles, vehicles less than 50 inches wide and motorcycles), seasonal restrictions and other travel rules and regulations. The MVUM is a free black and white map with no topographic features. Maps are available at each Ranger Station or online at [www.fs.usda.gov/main/srnf/maps-pubs](http://www.fs.usda.gov/main/srnf/maps-pubs)



<ul style="list-style-type: none"> <li>National Forest Boundary</li> <li>National Forest Administrative Boundary</li> <li>Ranger District Boundary</li> <li>Wilderness, Tribal, Park and Special Area Boundary</li> <li>State Boundary</li> <li>County Boundary</li> <li>National Recreation Area Boundary</li> <li>Power Transmission Line</li> <li>Divided Highway</li> <li>Highway</li> <li>Paved Road</li> <li>Gravel Road</li> <li>Dirt Road</li> <li>Road not Maintained for Passenger Cars</li> <li>Motorized Use Trail</li> <li>National Recreation Trail</li> <li>Non-Motorized Use Trail</li> </ul>	<ul style="list-style-type: none"> <li>U.S. Route</li> <li>State Route</li> <li>County Route</li> <li>Forest Service Primary Route Suitable for Passenger Cars</li> <li>Forest Service Secondary Route Suitable for Passenger Cars</li> <li>Forest Service Secondary Route Not Suitable for Passenger Cars</li> <li>Highway</li> <li>Forest Service Supervisors Office</li> <li>Forest Service Ranger District Office</li> <li>National or State Park Headquarters</li> <li>Other Facility; Forest Service</li> <li>Fire Station</li> </ul>	<ul style="list-style-type: none"> <li>Developed Campground</li> <li>Undeveloped Campsite</li> <li>Group Campground</li> <li>Picnic Area, Day Use Only</li> <li>Trailhead Parking</li> <li>Visitor Information</li> <li>Interpretive Trail</li> <li>Boat Ramp</li> <li>River Access</li> <li>Scenic Viewpoint</li> <li>Wildlife Viewing Area</li> <li>Lookout Tower, Closed to the Public</li> <li>Located or Landmark Object</li> <li>Spring, Falls or Rapids</li> <li>House, Cabin, or Other Building</li> <li>School</li> <li>Helipoint</li> <li>Gaging Station</li> <li>Locked Gate, All Year Closure</li> <li>Locked Gate, Seasonal Closure</li> <li>Mine</li> <li>Highway Interchange</li> <li>Perennial Stream</li> <li>Intermittent Stream</li> </ul>
---	---	---

Public lands are subject to change and leasing. Local inquiry should be made before entering.



### FIRE REQUIREMENTS

It is the permittee's responsibility to comply with fire prevention precautions. These may restrict access to areas in the National Forest or chainsaw use. Chainsaws and other internal combustion engines must have an approved spark arrestor. Have a shovel of at least 46" in length and an approved fire extinguisher in the immediate area of chainsaw use.

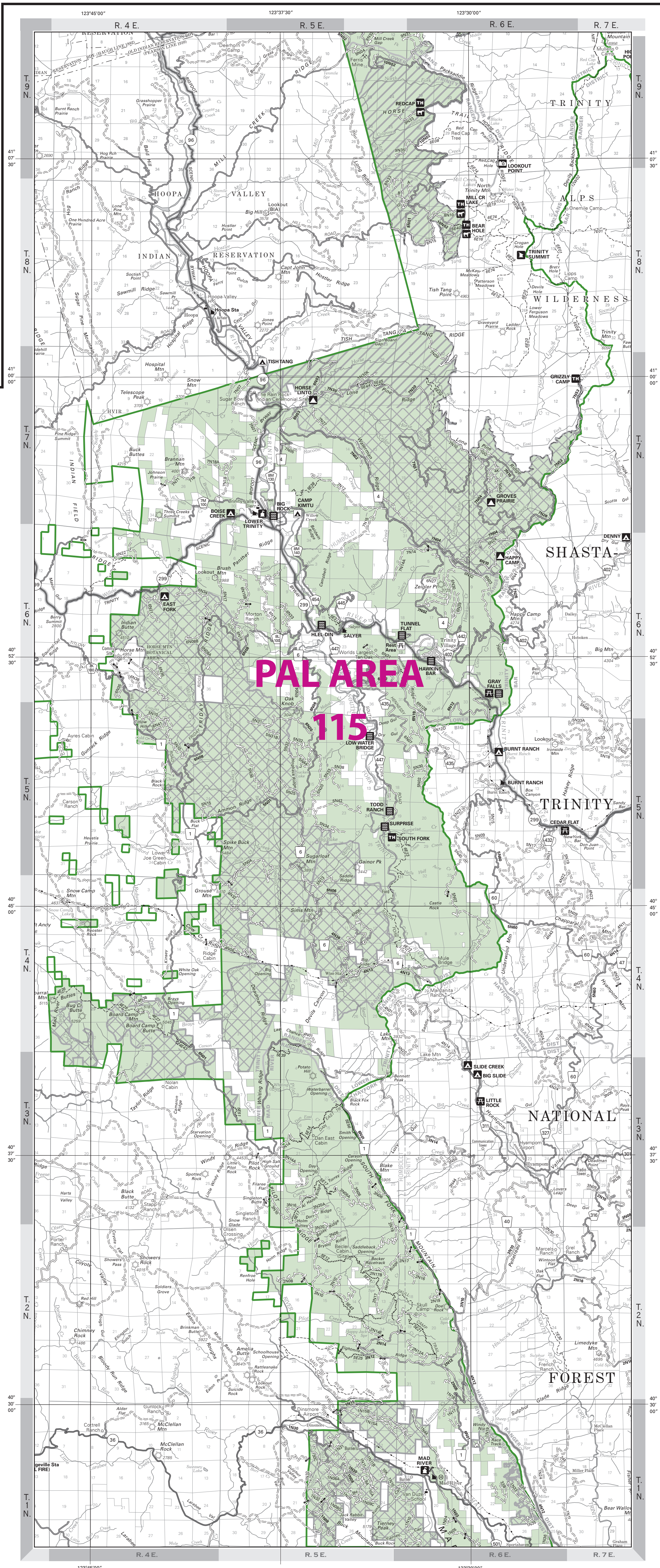


Project Activity Level (PAL)	PAL Area
A, B, C .....No additional permit restrictions	Smith River NRA/ Gasquet RD 110
D .....No fuelwood cutting after 1pm	Orleans RD 112
E/ev "Red Flag Days" .....No fuelwood cutting at any time	Ukonom RD 200
	Lower Trinity RD 115
	Mad River RD 130
<b>This permit is void when an emergency fire closure is enacted</b>	

Between May 1 and December 1 a prerecorded daily message will state the predicted PAL for the next day. Call 707-441-3665 for all Districts/ Areas at anytime or the closest District Office during office hours.

### Forest Offices

<b>Forest Supervisor's Office</b> 1330 Bayshore Way Eureka, CA 95501 707 442 1721	<b>Gasquet RD/ Smith River NRA</b> 10600 Hwy 199 Gasquet, CA 95543 707 457 3131	<b>Orleans and Ukonom RD</b> 1 Ishi Pishi Road Orleans, CA 95556 530 627 3291	<b>Lower Trinity RD</b> 580 Hwy 96 Willow Creek, CA 530 629 2118	<b>Mad River RD</b> 741 Hwy 36 Bridgeville, CA 707 574 6233
--	--	--	---	--



In accordance with Federal civil rights law and U.S. Department of Agriculture (USDA) civil rights regulations and policies, the USDA, its Agencies, offices, and employees, and institutions participating in or administering USDA programs are prohibited from discriminating based on race, color, national origin, religion, sex, gender identity (including gender expression), sexual orientation, disability, age, marital status, family/parental status, income derived from a public assistance program, political beliefs, or reprisal or retaliation for prior civil rights activity, in any program or activity conducted or funded by USDA (not all bases apply to all programs). Remedies and complaint filing deadlines vary by program or intent.

Persons with disabilities who require alternative means of communication for program information (e.g., Braille, large print, audiotape, American Sign Language, etc.) should contact the responsible Agency or USDA's TARGET Center at (202) 720-2600 (voice and TTY) or contact USDA through the Federal Relay Service at (800) 877-8339. Additionally, program information may be made available in languages other than English.

To file a program discrimination complaint, complete the USDA Program Discrimination Complaint Form, AD-3027, found online at <https://www.usda.gov/oascr/how-to-file-a-program-discrimination-complaint> and at any USDA office or write a letter addressed to USDA and provide in the letter all of the information requested in the form. To request a copy of the complaint form, call (866) 632-9992. Submit your completed form or letter to USDA by: (1) mail: U.S. Department of Agriculture, Office of the Assistant Secretary for Civil Rights, 1400 Independence Avenue, SW, Washington, D.C. 20250-9410; (2) fax: (202) 696-7442; or (3) email: [program.intake@usda.gov](mailto:program.intake@usda.gov).

USDA is an equal opportunity provider, employer, and lender.



# Six Rivers National Forest Christmas Tree Cutting Map

## Orleans & Ukonom Ranger Districts

We hope all of you enjoy your Christmas tree and the experience of cutting it in its natural habitat. Please help to protect and preserve your forest by observing the following regulations:

1. A permit must be purchased before cutting any tree. Permits are to be purchased online from [www.recreation.gov](http://www.recreation.gov) or in-person at a Six Rivers National Forest district office.
2. One tree is allowed per permit sold (2 max per household). Individuals must be 18 or older to purchase a permit.
3. Permits are \$10.00 each. Online purchase has a one-time \$2.50 processing fee. There are no refunds.
4. Your permit must be present when cutting your tree.
5. Cut the tree at least 100 feet from the main road.
6. There is no cutting allowed in wilderness areas, plantations, botanical areas, day-use areas, or developed campgrounds.
7. No cutting within Administrative sites, active timber sale areas, posted "no wood cutting" areas and within 150 feet of campgrounds and developed recreation areas.
8. No cutting within 300 feet of rivers, year-round streams, lakes and natural ponds or 150 feet of seasonal dry stream channels and wet areas.
9. Cut only trees that are 6 inches or less in diameter at the ground level. Cut down the entire tree. Tree "topping" is prohibited.
10. The stump must be no higher than 12 inches from the ground.
11. In addition, California state law prohibits the transportation of more than five (5) trees in any vehicle without a transportation tag issued by the County Sheriff's office (PC 384C). Contact your local Sheriff's office for additional information.

### Where is Cutting allowed?

**Open**  
Cutting is allowed in all areas coded as "Open".

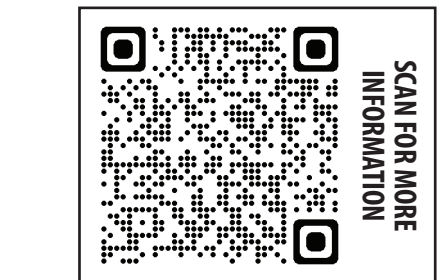
**Restricted**  
Contact the nearest forest service office for restrictions that may apply.

### Motor Vehicle Use

Motor vehicle use on National Forest System Lands is restricted to designated roads and trails. In addition to this map, use a Motor Vehicle Use Map (MVUM) to make sure you are on a designated route, as they are not always signed on the ground. The MVUM also displays uses allowed by vehicle class (highway-legal vehicles, vehicles less than 50 inches wide and motorcycles), seasonal restrictions and other travel rules and regulations. The MVUM is a free black and white map with no topographic features. Maps are available at each Ranger Station or online at [www.fs.usda.gov/main/srnf/maps-pubs](http://www.fs.usda.gov/main/srnf/maps-pubs)

### FIRE REQUIREMENTS

It is the permittee's responsibility to comply with fire prevention precautions. These may restrict access to areas in the National Forest or chainsaw use. Chainsaws and other internal combustion engines must have an approved spark arrester. Have a shovel of at least 46" in length and an approved fire extinguisher in the immediate area of chainsaw use.



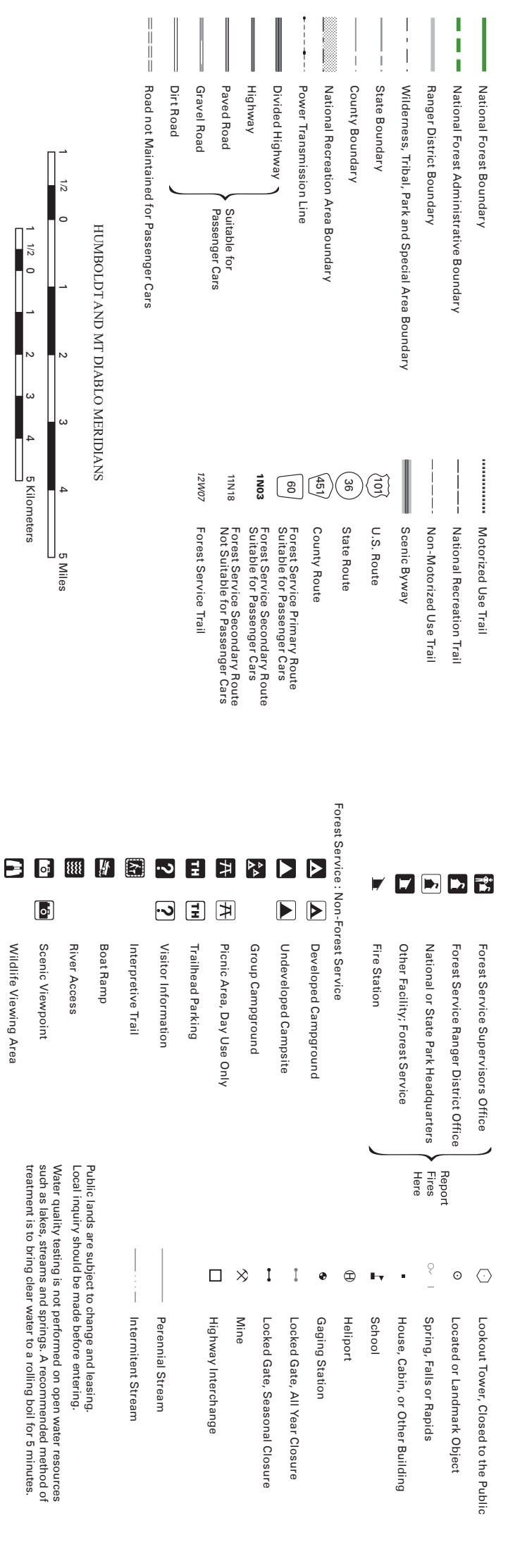
Project Activity Level (PAL)	Additional Permit Restrictions	PAL Area	Code
A, B, C	No additional permit restrictions	Smith River NRA/ Gasquet RD	110
D	No fuelwood cutting after 1pm	Orleans RD	112
E/F	"Red Flag Days" - No fuelwood cutting at any time	Ukonom RD	200
		Lower Trinity RD	115
		Mad River RD	130

This permit is void when an emergency fire closure is enacted

Between May 1 and December 1 a prerecorded daily message will state the predicted PAL for the next day. Call 707 441 3665 for all Districts. Areas at anytime or the closest District Office during office hours.

### Forest Offices

Forest Supervisor's Office	Smith River NRA	Orleans and Ukonom RD	Lower Trinity RD	Mad River RD
1330 Bayshore Way Eureka, CA 95601 707 442 1721	Smith River NRA 10600 Hwy 199 Gasquet, CA 95643 707 457 3131	Orleans and Ukonom RD 11sh Fish Road Orleans, CA 95556 530 627 3291	Lower Trinity RD 580 Hwy 96 Willow Creek, CA 530 629 2118	Mad River RD 741 Hwy 36 Bidgewille, CA 707 574 6233



To file a program information complaint, complete the USDA Program Discrimination Complaint form, AD-3027 found online at <http://www.usda.gov>. Information requested in the form, to request a copy of the complaint form, call (866) 623-9992. Submit your complaint from or refer to USDA by (1) fax (202) 696-7442 or (2) email [program.integrity@usda.gov](mailto:program.integrity@usda.gov). USDA is an equal opportunity provider, employee, and vendor.

