

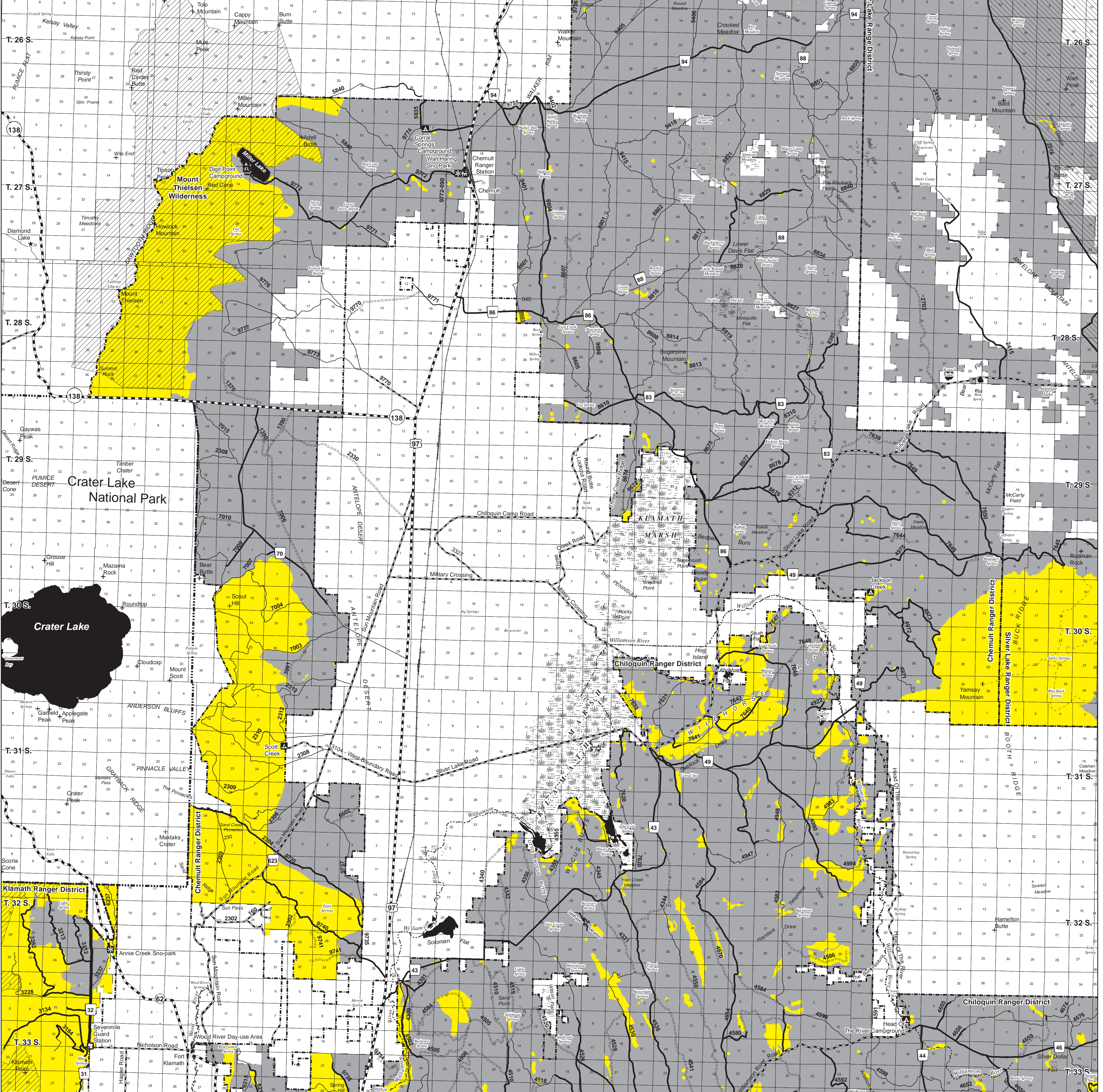
The United States Department of Agriculture (USDA) prohibits discrimination in its programs on the basis of race, color, national origin, sex, religion, age, disability, political beliefs and marital or family status. (Not all prohibited bases apply to all programs.) Persons with disabilities who require alternative means for communication of program information (braille, large print, audiotape, etc.) should contact the USDA Office of Communications at (202) 720-5887 (voice) or (202) 720-7826 (TDD).

To file a complaint, write the Secretary of Agriculture, U.S. Department of Agriculture, Washington, D.C. 20250, or call (202) 720-7327 (voice) or (202) 720-1127 (TDD). USDA is an equal employment opportunity employer.

Federal Employees: To file a complaint, contact the Employees Dispute Resolution Office (EDRO).

Produced by the United States Forest Service,  
Pacific Northwest Region 6,  
Data Resources Management, Customer Service Area 3:  
Fremont-Winema, Deschutes, and  
Ochoco National Forests DRM Services

This product is reproduced from information prepared by the USDA, Forest Service, or from other suppliers. The Forest Service cannot assure the reliability or suitability of this information for a particular purpose. The data and product accuracy may vary due to compilation from various sources, including modeling and interpretation, and may not meet National Map Accuracy Standards. This information may be updated, corrected, or otherwise modified without notification.



### Fremont-Winema National Forest Chemult and Chiloquin Ranger Districts Firewood Map

Produced by the Fremont-Winema National Forest, Last Updated Jan 13, 2020

**Woodcutter must have in their possession; permit, synopsis of rules and regulations, Fremont-Winema National Forest Firewood map, and load tags.**

You will need to refer to the 2019 Personal Use Rules and Regulations, and Terms and Conditions that is specific to each district for firewood cutting restrictions. The purpose of this map is to show open areas for firewood cutting. Other Forest Service maps can be used to locate roads not shown on this map.

**Legend**

- ★ Town
- Ⓜ Administrative Site
- Highway
- County Roads
- Railroad
- Forest Roads**
- Paved Surface
- Crushed Aggregate Or Gravel
- Improved Native Material
- Native Material
- Trail
- River
- Lake - Pond
- ▨ Swamp - Marsh
- National Forest Lands - Designated Woodcutting Area
- National Forest Lands - No Woodcutting Allowed
- Non-National Forest Lands - No Woodcutting Allowed
- ▨ Wilderness
- ▭ Crater Lake National Park
- ▭ Ranger District Boundaries
- ▭ Seasonal Closure



Motorized access specifically for the removal of firewood (under permit) is allowed 300 feet off roads within areas where firewood cutting is permitted. Unlimited motorized access off roads may be allowed in specific areas when such access is stated and shown on the wood cutting map.