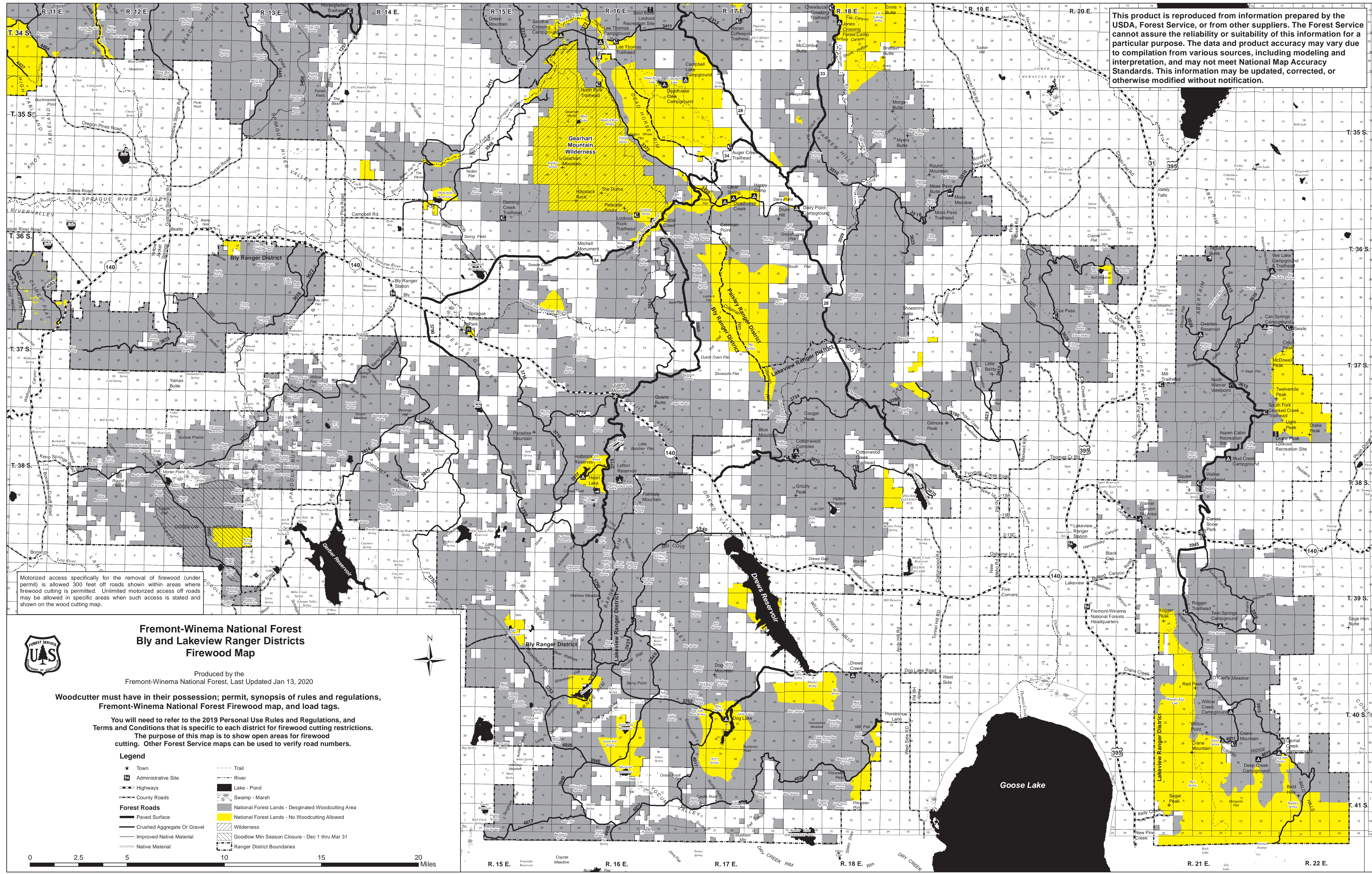


This product is reproduced from information prepared by the USDA, Forest Service, or from other suppliers. The Forest Service cannot assure the reliability or suitability of this information for a particular purpose. The data and product accuracy may vary due to compilation from various sources, including modeling and interpretation, and may not meet National Map Accuracy Standards. This information may be updated, corrected, or otherwise modified without notification.



Motorized access specifically for the removal of firewood (under permit) is allowed 300 feet off roads shown within areas where firewood cutting is permitted. Unlimited motorized access off roads may be allowed in specific areas when such access is stated and shown on the wood cutting map.

Fremont-Winema National Forest Bly and Lakeview Ranger Districts Firewood Map

Produced by the
Fremont-Winema National Forest, Last Updated Jan 13, 2020

Woodcutter must have in their possession; permit, synopsis of rules and regulations, Fremont-Winema National Forest Firewood map, and load tags.

You will need to refer to the 2019 Personal Use Rules and Regulations, and Terms and Conditions that is specific to each district for firewood cutting restrictions. The purpose of this map is to show open areas for firewood cutting. Other Forest Service maps can be used to verify road numbers.

Legend

- ★ Town
- Ⓜ Administrative Site
- ⚡ Highways
- ⚡ County Roads
- Forest Roads**
- Paved Surface
- Crushed Aggregate Or Gravel
- Improved Native Material
- ⋯ Native Material
- Trail
- River
- Lake - Pond
- Swamp - Marsh
- ▒ National Forest Lands - Designated Woodcutting Area
- ▒ National Forest Lands - No Woodcutting Allowed
- ▒ Wilderness
- ▒ Goodlow Mtn Season Closure - Dec 1 thru Mar 31
- ⚡ Ranger District Boundaries



R. 15 E. Coyote Meadow R. 16 E. Buckhorn Flat R. 17 E. Dry Creek Rim R. 18 E. Rim DRY CREEK R. 21 E. Lily Lake R. 22 E.