

Six Rivers National Forest Christmas Tree Cutting Map

Mad River Ranger District

We hope all of you enjoy your Christmas tree and the experience of cutting it in its natural habitat. Please help to protect and preserve your forest by observing the following regulations:

1. A permit must be purchased before cutting any tree. Permits are to be purchased online from www.recreation.gov or in-person at a Six Rivers National Forest district office.
2. One tree is allowed per permit sold (2 max per household). Individuals must be 18 or older to purchase a permit.
3. Permits are \$10.00 each. Online purchase has a one-time \$2.50 processing fee. There are no refunds.
4. Your permit must be present when cutting your tree.
5. Cut the tree at least 100 feet from the main road.
6. There is no cutting allowed in wilderness areas, plantations, botanical areas, day-use areas, or developed campgrounds.
7. No cutting within Administrative sites, active timber sale areas, posted "no wood cutting" areas and within 150 feet of campgrounds and developed recreation areas.
8. No cutting within 300 feet of rivers, year-round streams, lakes and natural ponds or 150 feet of seasonal dry stream channels and wet areas.
9. Cut only trees that are 6 inches or less in diameter at the ground level. Cut down the entire tree. Tree "topping" is prohibited.
10. The stump must be no higher than 12 inches from the ground.
11. In addition, California state law prohibits the transportation of more than five (5) trees in any vehicle without a transportation tag issued by the County Sheriff's office (PC 384C). Contact your local Sheriff's office for additional information.

Where is Cutting allowed?

- Open**
Cutting is allowed in all areas coded as "Open".
- Restricted**
Contact the nearest forest service office for restrictions that may apply.

Motor Vehicle Use
Motor vehicle use on National Forest System Lands is restricted to designated roads and trails. In addition to this map, use a Motor Vehicle Use Map (MVUM) to make sure you are on a designated route, as they are not always signed on the ground. The MVUM also displays uses allowed by vehicle class (highway-legal vehicles, vehicles less than 50 inches wide and motorcycles), seasonal restrictions and other travel rules and regulations. The MVUM is a free black and white map with no topographic features. Maps are available at each Ranger Station or online at www.fs.usda.gov/main/srnf/maps-pubs.

FIRE REQUIREMENTS

It is the permittee's responsibility to comply with Fire Prevention Precautions; these may restrict access to areas in the National Forest or chainsaw use. Chainsaws and other internal combustion engines must have an approved spark arrestor. Have a shovel of at least 46" in length and an approved fire extinguisher in the immediate area of chainsaw use.



Project Activity Level (PAL)	PAL Area
A, B, C	Smith River NRA/ Gasquet RD 110
D	Orleans RD 112
E/Ev "Red Flag Days"	Ukonom RD 200
	Lower Trinity RD 115
	Mad River RD 130

This permit is void when an emergency fire closure is enacted

Between May 1 and December 1 a prerecorded daily message will state the predicted PAL for the next day.
Call 707-441-3665 for all Districts/ Areas at anytime or the closest District Office during office hours.

Forest Offices

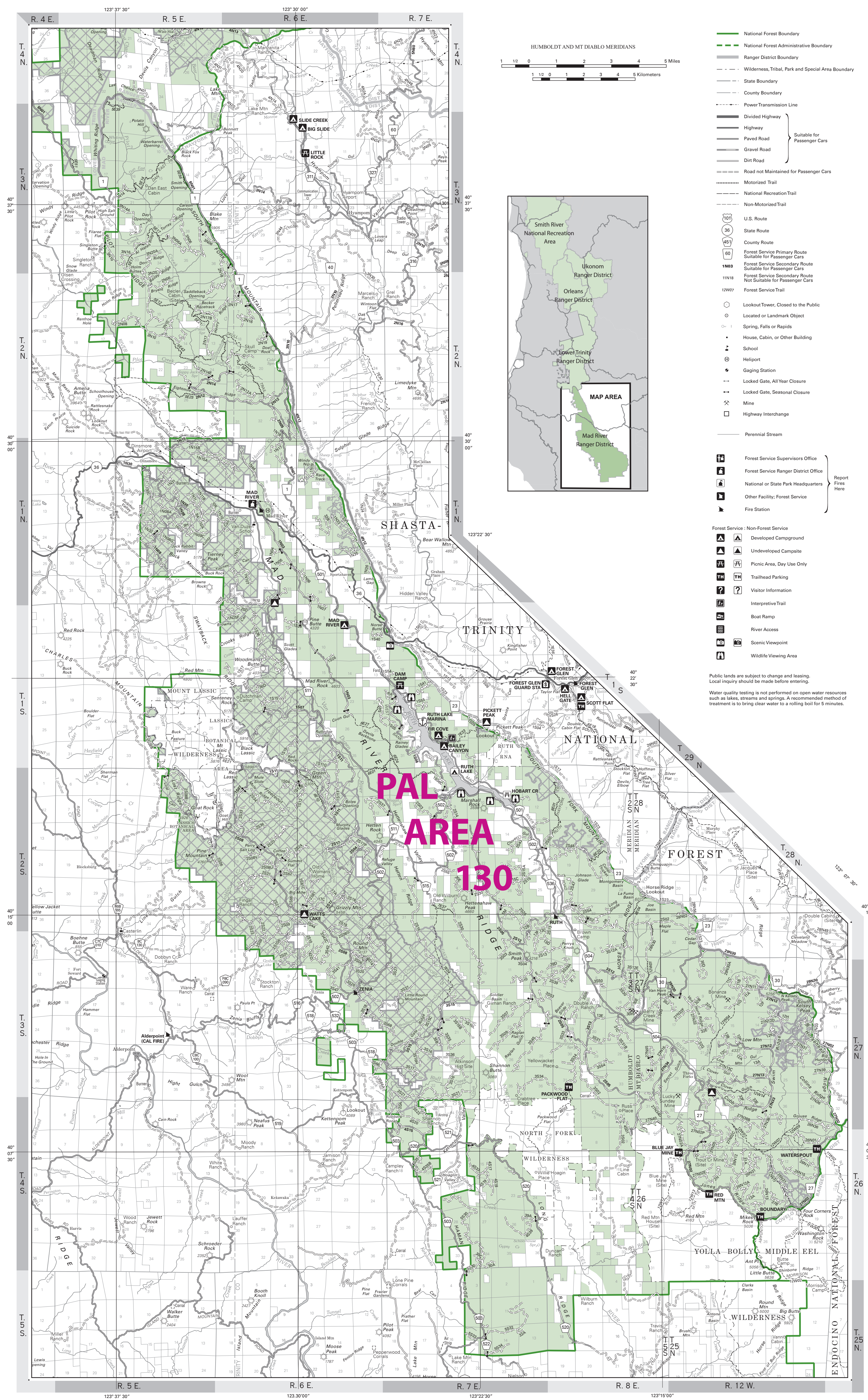
- Forest Supervisor's Office**
1330 Bayshore Way
Eureka, CA 95501
707 442 1721
- Gasquet RD/ Smith River NRA**
10600 Hwy 199
Gasquet, CA 95543
707 457 3131
- Orleans and Ukonom RD**
1 Ishi Pishi Road
Orleans, CA 95556
530 627 3291
- Lower Trinity RD**
580 Hwy 96
Willow Creek, CA 95573
530 629 2118
- Mad River RD**
741 Hwy 36
Bridgeville, CA 95526
707 574 6233

In accordance with Federal civil rights law and U.S. Department of Agriculture (USDA) civil rights regulations and policies, the USDA, its Agencies, offices, and employees, and institutions participating in or administering USDA programs are prohibited from discriminating based on race, color, national origin, religion, sex, gender identity (including gender expression), sexual orientation, disability, age, marital status, family/parental status, income derived from a public assistance program, political beliefs, or reprisal or retaliation for prior civil rights activity, in any program or activity conducted or funded by USDA (not all bases apply to all programs). Remedies and complaint filing deadlines vary by program or incident.

Persons with disabilities who require alternative means of communication for program information (e.g., Braille, large print, audiotape, American Sign Language, etc.) should contact the responsible Agency or USDA's TARGET Center at (202) 720-2600 (voice and TTY) or contact USDA through the Federal Relay Service at (800) 877-8339. Additionally, program information may be made available in languages other than English.

To file a program discrimination complaint, complete the USDA Program Discrimination Complaint Form, AD-3027, found online at <https://www.usda.gov/oasrc/how-to-file-a-program-discrimination-complaint> and at any USDA office or write a letter addressed to USDA and provide in the letter all of the information requested in the form. To request a copy of the complaint form, call (866) 632-9992. Submit your completed form or letter to USDA by: (1) mail: U.S. Department of Agriculture, Office of the Assistant Secretary for Civil Rights, 1400 Independence Avenue, SW, Washington, D.C. 20250-9410; (2) fax: (202) 690-7442; or (3) email: program.intake@usda.gov.

USDA is an equal opportunity provider, employer, and lender.



Public lands are subject to change and leasing. Local inquiry should be made before entering.
Water quality testing is not performed on open water resources such as lakes, streams and springs. A recommended method of treatment is to bring clear water to a rolling boil for 5 minutes.