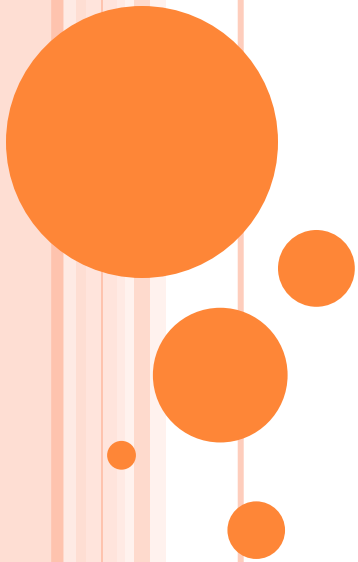


KRAUSE BASIN RECREATION COLLABORATION

Meeting 7

September 21, 2022

Focus: Alternative Refinement




LOGISTICS AND GROUND RULES

Logistics

- Meeting is being recorded
- Raise your hand to ask a question
- Mute yourselves unless you are speaking

Ground Rules

- LISTEN AND BE RESPECTFUL OF EACH OTHER
 - Keep comments in chat box respectful and productive
 - Don't dominate speaking, so all can participate
- 

WHERE WE ARE

Meetings and field trips

- 1: Introduction to Process (Dec 16, 2021)
- 2: Trail designation 1 (February 16)
- 3: Trail designation 2 (April 13)
- 4: Trail designation field trip (May 22)
- 5: Trail signage (July 13)
- 6: Continue alternative development (Aug 25)
- 7: Finalize alternatives (Today **Sept 21**)

Provide recommendations to USFS **October**



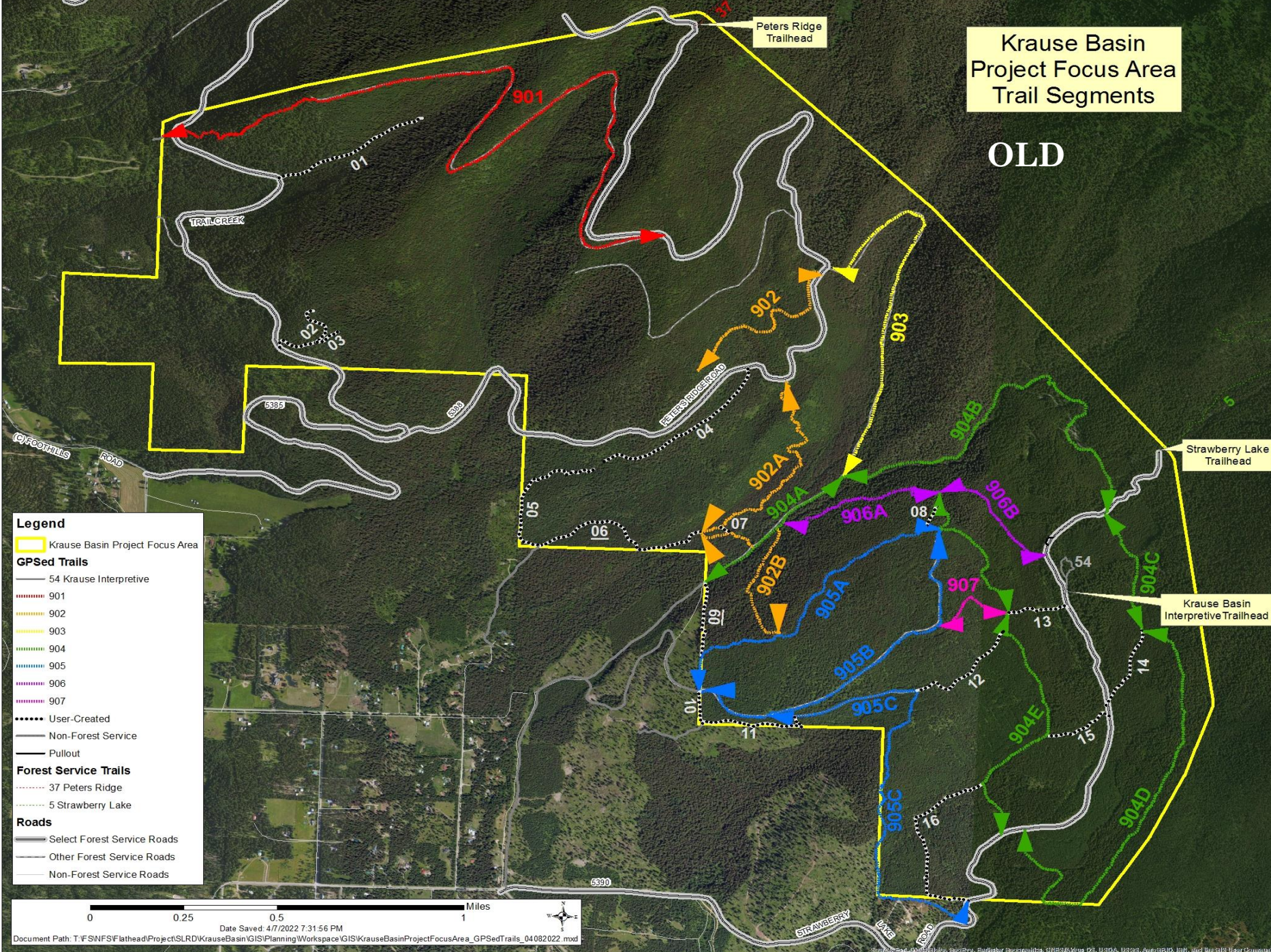
TODAY'S AGENDA

- Trail Updates
- Finalize Current Alternatives
- Final Report
- Next Steps for Krause Basin



Krause Basin Project Focus Area Trail Segments

OLD



Legend

- Krause Basin Project Focus Area
- GPSed Trails**
 - 54 Krause Interpretive
 - 901
 - 902
 - 903
 - 904
 - 905
 - 906
 - 907
 - User-Created
 - Non-Forest Service
 - Pullout
- Forest Service Trails**
 - 37 Peters Ridge
 - 5 Strawberry Lake
- Roads**
 - Select Forest Service Roads
 - Other Forest Service Roads
 - Non-Forest Service Roads

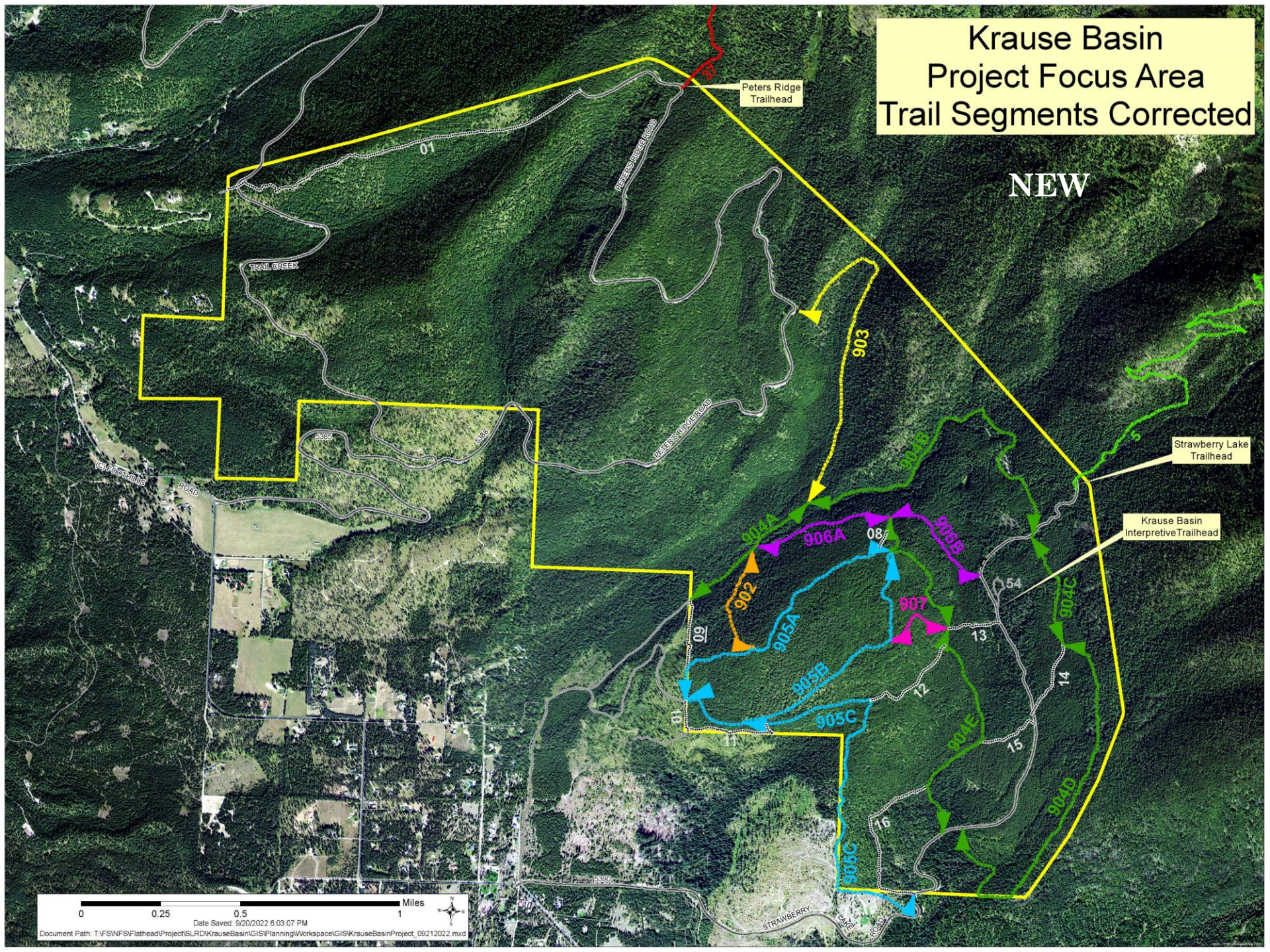
Krause Basin Project Focus Area Trail Segments Corrected

NEW

Peters Ridge
Trailhead

Strawberry Lake
Trailhead

Krause Basin
Interpretive Trailhead



RECOMMENDATIONS COMMON TO ALL ALTERNATIVES

- Increased law enforcement presence
 - Follow-up on those that use illegally
- Reduce erosion through proper trail maintenance and location
- Do not promote Krause Basin trails
- Ensure maps are clear and correct
- Ensure signs are clear and maintained



CURRENT ALTERNATIVES

- **No Action:** All users on 13 miles of designated trail (motorized July and August), close user-created trails
- **Alternative A:** Hike and horseback users only, all existing trails
- **Alternative B:** Keep all existing trails (designated and user-created) for use by all user groups (motorized July and August)
- **Alternative C:** Hike and horseback users only on 13 miles of designated trail
- **Alternative D:** Open to non-motorized users (hike, horseback, bikes), keeping all existing trails

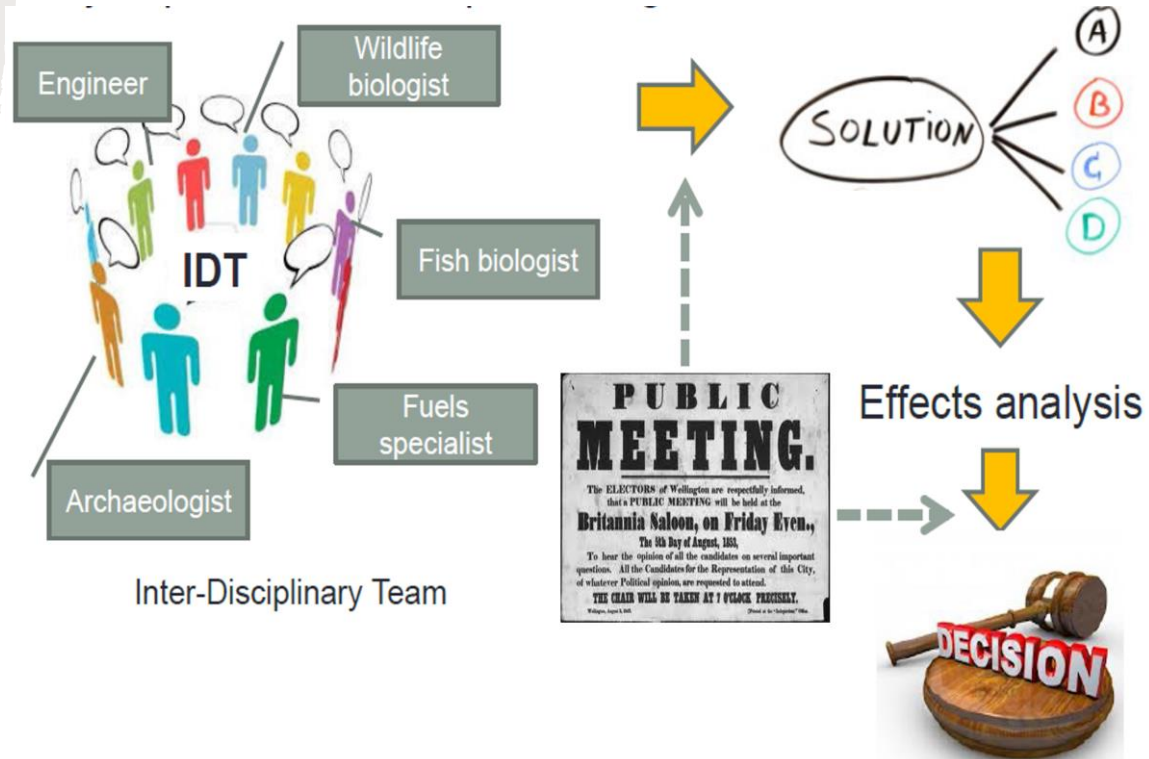
CORY'S FINAL REPORT

- To be completed in October
- Will include:
 - Outline of process
 - Recommendations Common to All
 - Final version of alternatives
 - Appendix with poll results
- Will send final version to KBRC email list

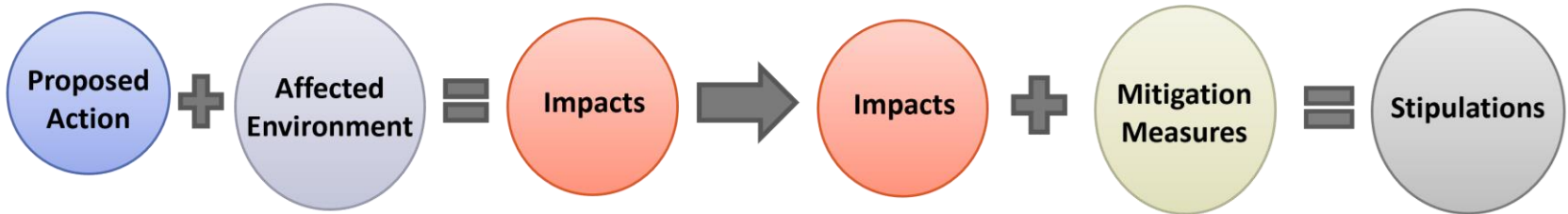


WHAT ARE the NEXT STEPS??

- Forest Service review public options provided.
- Ensure options comply with the Forest Plan and other Federal Laws.
- Develop Proposed Action and alternatives.
- Request public input on Proposed Action and alternatives during Scoping Period.
- Adjust PA and alternatives from public comments.
- Environmental Analysis
- Another Comment Period or Decision – dependent upon level of analysis – determined by deciding officer.



ANALYSIS



Proposed Action



Affected Environment



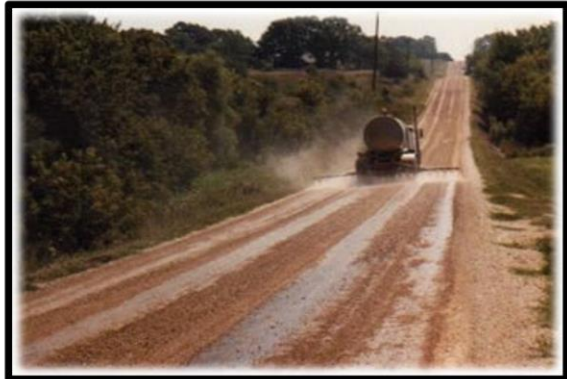
Impacts



Impacts



Mitigation Measures



Stipulations

Tentative Project Timeline



*If you participated in this process, you will receive a Scoping notification when the Scoping period starts.

**This is PURELY an estimate. Forest Workload, Priorities and Staffing holes may create delays in this process!

THANK YOU FOR PARTICIPATING!

