

R. 41 E.

R. 42 E.

R. 43 E.

R. 44 E.

This product is reproduced from information prepared by the USDA Forest Service or from other suppliers. The Forest Service cannot assure the reliability or suitability of this information for a particular purpose. The data and product accuracy may vary due to compilation from various sources, including modeling and interpretation, and may not meet National Map Accuracy Standards. This information may be updated, corrected or otherwise modified without notification.

For more information contact: The Newport-Sullivan Lake Ranger District Office at 509-447-7300

The USDA is an equal opportunity provider and employer.

T. 35 N.

T. 34 N.

T. 33 N.

T. 32 N.

T. 31 N.

T. 30 N.

T. 29 N.

T. 28 N.

T. 27 N.

T. 26 N.

T. 25 N.

T. 24 N.

T. 23 N.

T. 22 N.

T. 21 N.

T. 20 N.

T. 19 N.

T. 18 N.

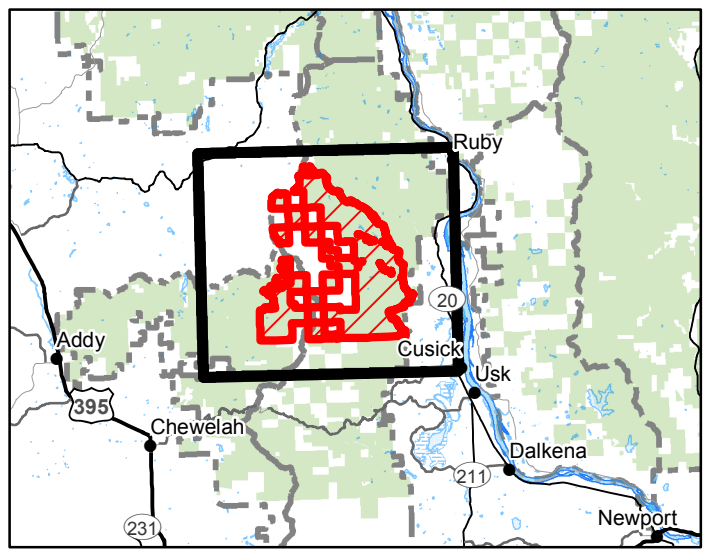
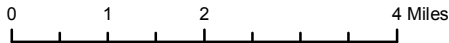
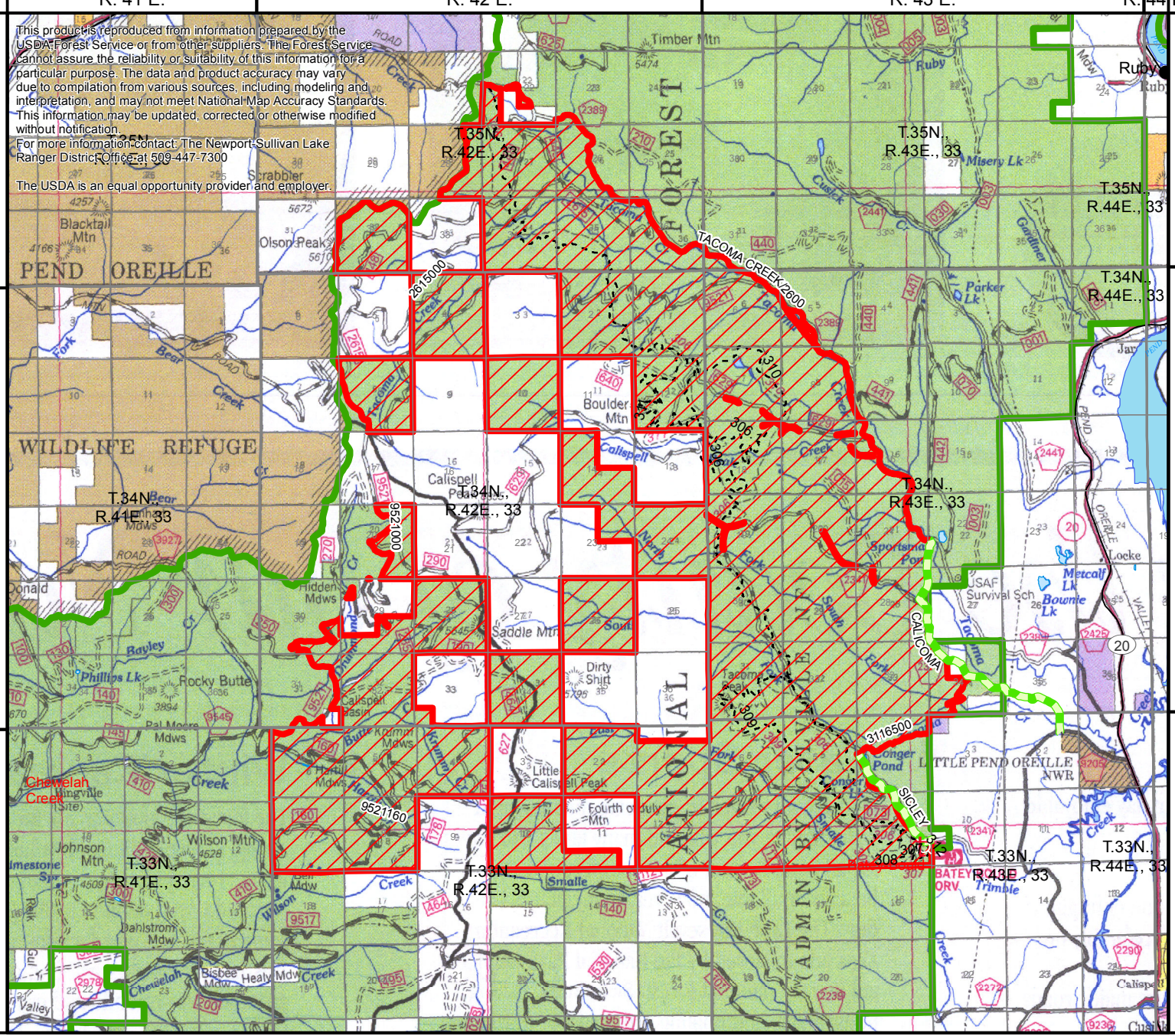
T. 17 N.

T. 16 N.

T. 15 N.

T. 14 N.

T. 13 N.



**Boulder Mountain Fire Closure**  
**06-21-03-22-09**  
**Colville National Forest**  
**Newport-Sullivan Lake RD 509-447-7300**

- Open Roads
- Area Closure
- County Road
- Trails
- Campground
- Trailhead
- National Forest Land



Date: 9/7/2022