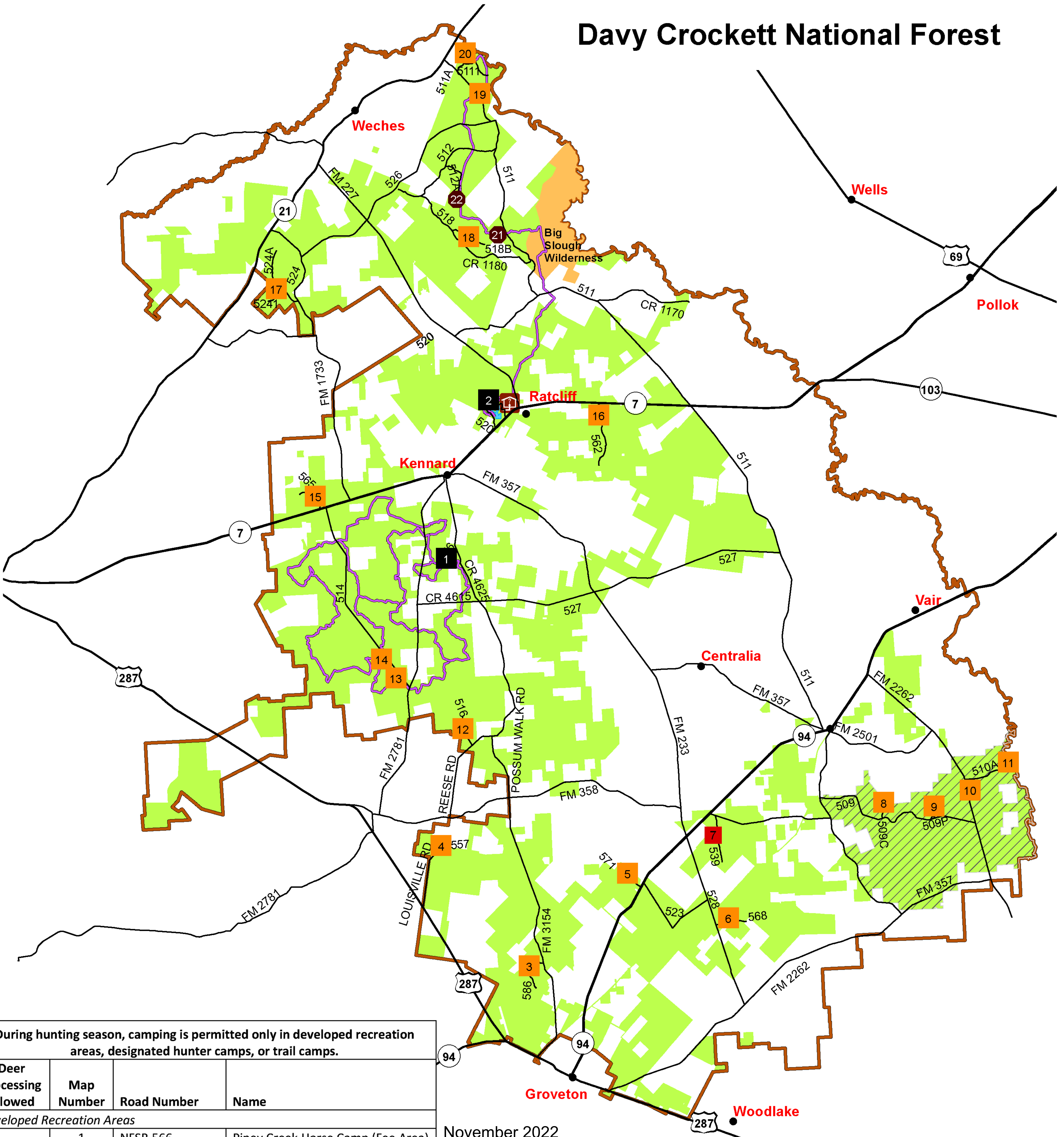


Davy Crockett National Forest



During hunting season, camping is permitted only in developed recreation areas, designated hunter camps, or trail camps.

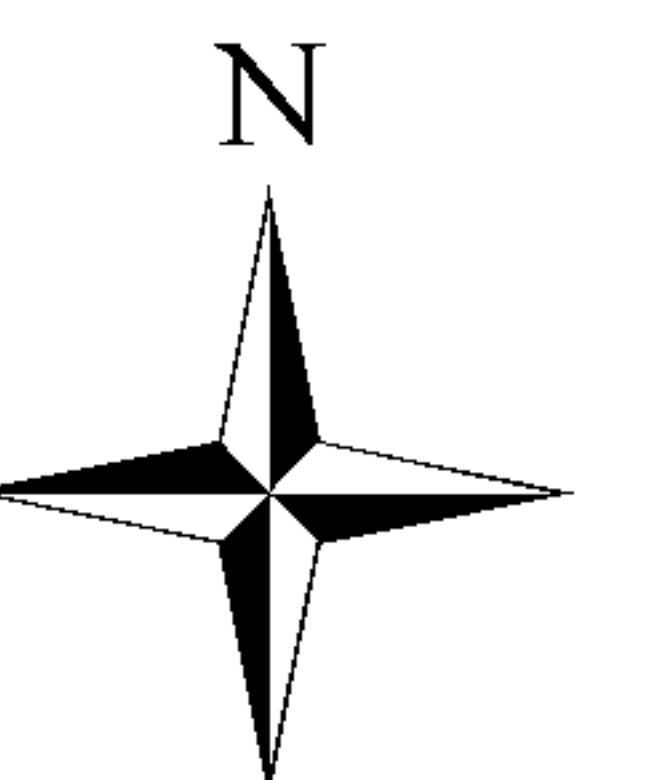
Deer Processing Allowed	Map Number	Road Number	Name
Developed Recreation Areas			
	1	NFSR 566	Piney Creek Horse Camp (Fee Area)
	2	SH 7	Ratcliff Lake (Fee Area)
Designated Hunter Camps			
✓	3	NFSR 586	South Possum Walk
✓	4	NFSR 557	Pennington
✓	5	NFSR 571	Piney
✓	6	NFSR 568	Longleaf
✓	7	NFSR 539	Centerville
✓	8	NFSR 509C	Rock Hole
✓	9	NFSR 509P	Sandy Creek
✓	10	FM 2262	Slay Creek
✓	11	NFSR 510A	Holly Bluff
✓	12	NFSR 516	County Line Camp
✓	13	NFSR 514	White Rock
✓	14	NFSR 514D	White Rock Horse Camp
✓	15	NFSR 565	Raines Morgan
✓	16	NFSR 562	Brushy Camp
✓	17	NFSR 524A/5241	Pine Springs
✓	18	NFSR 518B	Merkel Creek
✓	19	NFSR 511	Neches Bluff #2
✓	20	NFSR 511A/5111	Neches Bluff
Trail Camps (Trail Access Only)			
	21	4 C Hiking Trail	Walnut Creek Camp
	22	4 C Hiking Trail	Pond Camp

November 2022

Legend

- Developed Recreation Area
- Designated Hunter Camp
- Trail Camp
- CLOSED
- District Office
- Trail
- Ratcliff Lake
- Alabama Creek Wildlife Management Area
- Big Slough Wilderness
- Administrative Boundary
- USDA Forest Service

0 2 4 Miles



This map is a general guide and does not show exact boundaries or all roads. It is the user's responsibility to know his or her location in the forest. Users should be aware that private property exists within the Forest Service boundary. Please respect our neighbors' rights. Check with the district ranger office where you hunt regarding special regulations or boundary locations. Call District Office for facility/trail/road closures.