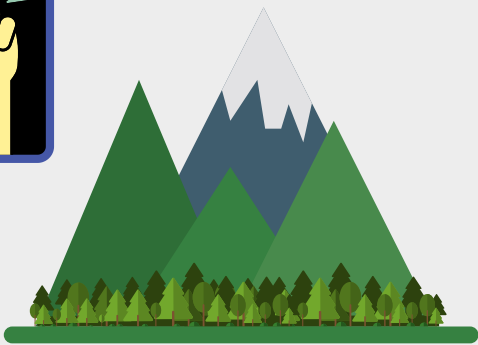


Applying for a Special Use Permit

The Forest Service works with applicants to evaluate proposals and potential for authorization.



Consider This

Not every location is eligible for every use.



Prospectus

Issued to select operators for certain locations of limited capacity.



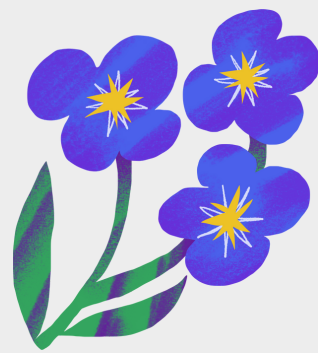
Contact the Forest

Help is available to work through the process.



Apply for a Permit

Submit a proposal well in advance of the proposed start date.



Proposal Review

For consistency with laws, regulations, policies and potential resource effects.



Authorization

If approved, fees are paid, and a special use permit is issued. Congratulations!



FOR MORE INFORMATION

<http://www.fs.usda.gov/goto/alaska-special-uses>

