

## Know the Area – Is it Open?

- The Pike National Forest has many places to enjoy your favorite recreational activities including target shooting if done in a safe and responsible manner.
- Recreational shooting has been a longtime use of the National Forest, and much of the Pike National Forest is open to recreational target shooting.
- There are specific areas that are closed to target shooting. Know the area, is it open?
- The **MAP** on the inside of this brochure shows those areas that are **CLOSED** to recreational shooting on the Pikes Peak Ranger District only. If you plan to shoot elsewhere on the National Forest, please check with the local Forest Service office in that area, for their specific closures and restrictions.
- The areas closed to target shooting are areas of concentrated activity with many nearby roads and trails, recreation sites, private land developments and livestock grazing nearby. Restricting shooting in these areas reduces hazards to others who play, live, or work within these areas.
- Become familiar with the areas that are closed to target shooting, find an area where shooting is allowed, and obey the Regulations & Restrictions that follow.
- Always follow the Four Fundamental Rules of Firearms Safety:
  - Treat every gun as if it is loaded.
  - Never let the muzzle of a firearm point at anything you do not intend to shoot.
  - Keep your finger off the trigger and out of the trigger guard until your sights are on the target and you are ready to shoot.
  - Always be sure of your target and what is beyond.

## Regulations & Restrictions

### You can shoot as long as:

- You are outside of the Closure Areas on the map.
- You are at least 150 yards from a residence, building, campsite, developed recreation area or occupied area.
- You are not shooting across or on a National Forest System Road.
- You are not shooting across or into streams or any body of water.
- You are not shooting in a manner or place where any person or property is exposed to injury or damage as a result of such discharge. See "Earthen Backstop".
- You are not firing tracer bullets or incendiary ammunition. Also, see Target Requirements below.

### Target Requirements:

- Use Approved Targets only: Shoot only at targets that are specifically designed and manufactured for firearms use. These MANUFACTURED targets are: cardboard, paper, clay pigeons, polymer ground-bouncing (self-healing), and metallic targets (specifically designed for firearms).
- Exploding Targets are strictly prohibited.

### Solid Earthen Backstop:

- Ensure you have a solid Earthen Backstop. A safe backstop is one that will stop a bullet. Do not shoot into rock as ricochets may occur, and sparks could start a wildfire. Shoot only at your intended target with a good earthen backstop immediately behind it.

### Do Not Shoot Trees:

- Never shoot at trees or place targets on trees.
- If shooting skeet, the area must be open and away from trees and water.
- You are responsible for removing all your targets, casings and any shooting related trash before you leave the area.

### Exceptions to Shooting in the Restricted Areas:

If you are lawfully hunting (actively hunting an animal during an open season with a valid hunting license) then you may discharge a firearm within the restricted areas as shown on the map. Follow all *Division of Colorado Parks and Wildlife* rules and regulations that apply when hunting. Also exempt from the restricted areas are any persons discharging a gas-operated paintball or airsoft gun. Please shoot safely, responsibly and ethically!

**Violation of any of these rules and regulations may be punishable by a fine of not more than \$5,000 for an individual or \$10,000 for an organization, or imprisonment for not more than 6 months, or both.**

## Be a Safe and Responsible Shooter – Remember:

1. Know the area, is it open to shooting and is it safe?
2. Never shoot from or across roads, across trails, waterways, or into caves.
3. Only shoot directly into a solid earthen backstop. Know what lies between you and your target, and beyond.
4. Use only approved targets: paper, cardboard, manufactured metal, polymer ground bouncing, and clay pigeon targets.
5. Exploding targets are illegal to use on National Forest lands.
6. Never shoot at trees or place targets on trees. Never shoot at signs or other property.
7. Shoot your shotgun safely and responsibly. Never shoot where shotgun pellets will hit trees or endanger other people.
8. Protect your image and respect your environment. Please remove your targets, related trash, spent casings and firearms shells.

For further information: please call the Pikes Peak Ranger District Office at (719) 636-1602. [www.fs.usda.gov/psicc](http://www.fs.usda.gov/psicc)



**KEEP IT SAFE**

**KEEP IT CLEAN**

**KEEP IT LEGAL**



USDA is an equal opportunity provider and employer.



United States Department of Agriculture

Forest Service

April 2014

# Recreational Target Shooting

## Guidelines for the Pikes Peak Ranger District Pike National Forest

Map Disclaimer. This map is intended to depict physical features as they generally appear on the ground and may not be used to determine title, ownership, legal boundaries, legal jurisdiction, including jurisdiction over roads or trails, or access restrictions that may be in place on either public or private land. Obtain permission before entering private lands, and check with appropriate government offices for restrictions that may apply to public lands. Lands, roads and trails within the boundaries of National Forest may be subject to restrictions on motor vehicle use. Obtain a Motor Vehicle Use Map, or inquire at the local Forest Service Office for motor vehicle access information. Natural hazards may or may not be depicted on the map, and land users should exercise due caution. This map may not be suitable for navigation.



Pike & San Isabel National Forests  
Cimarron & Comanche National Grasslands

South Platte  
Ranger District

**Areas Closed to  
Recreational Shooting**

**SHOOTING RESTRICTIONS**

It is unlawful to discharge a firearm, air rifle, or gas gun in the "Areas Closed to Recreational Shooting" as shown on the map.

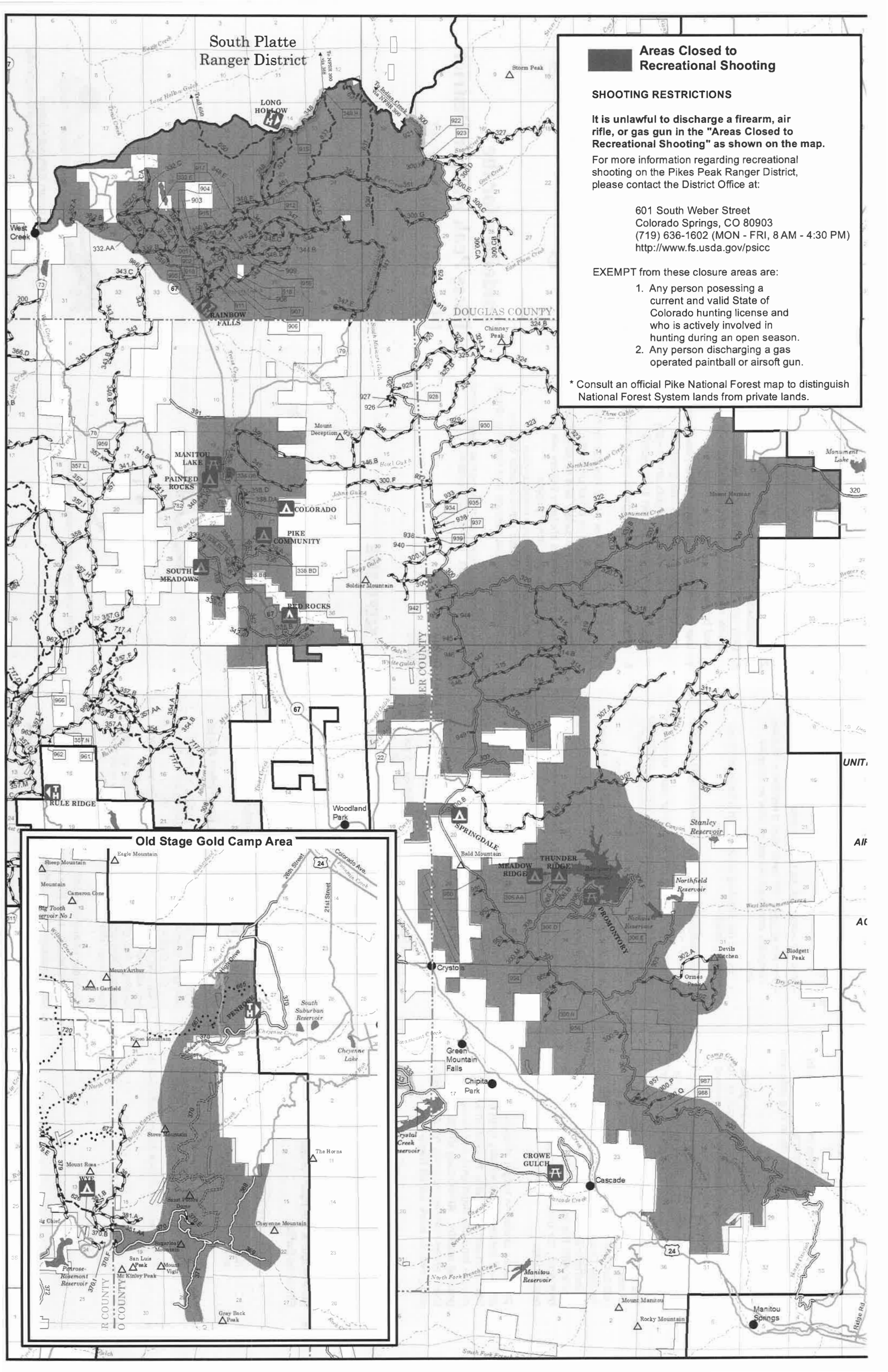
For more information regarding recreational shooting on the Pikes Peak Ranger District, please contact the District Office at:

601 South Weber Street  
Colorado Springs, CO 80903  
(719) 636-1602 (MON - FRI, 8 AM - 4:30 PM)  
<http://www.fs.usda.gov/psicc>

EXEMPT from these closure areas are:

1. Any person possessing a current and valid State of Colorado hunting license and who is actively involved in hunting during an open season.
2. Any person discharging a gas operated paintball or airsoft gun.

\* Consult an official Pike National Forest map to distinguish National Forest System lands from private lands.



**Old Stage Gold Camp Area**

