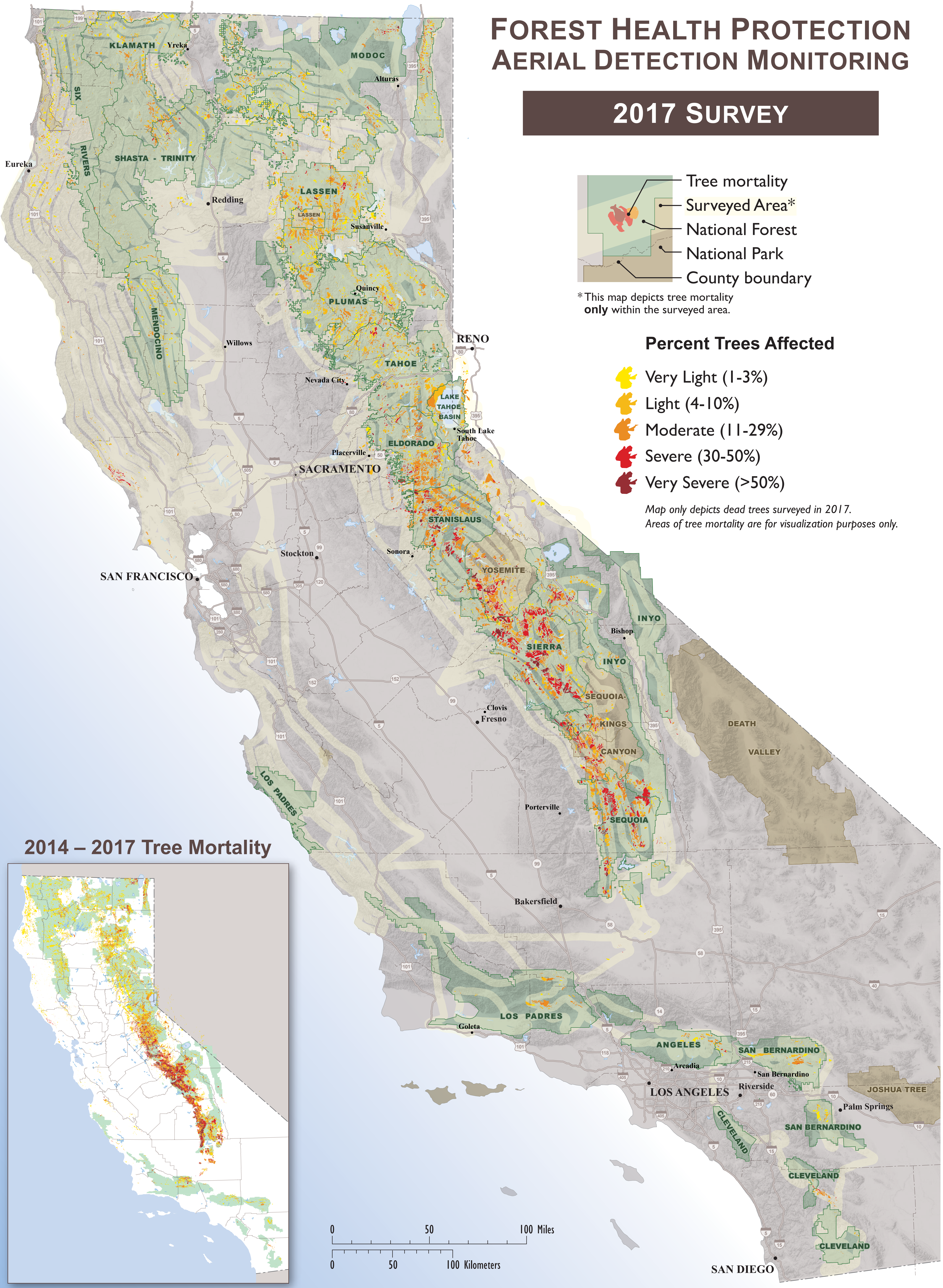


FOREST HEALTH PROTECTION AERIAL DETECTION MONITORING

2017 SURVEY



- Tree mortality
- Surveyed Area*
- National Forest
- National Park
- County boundary

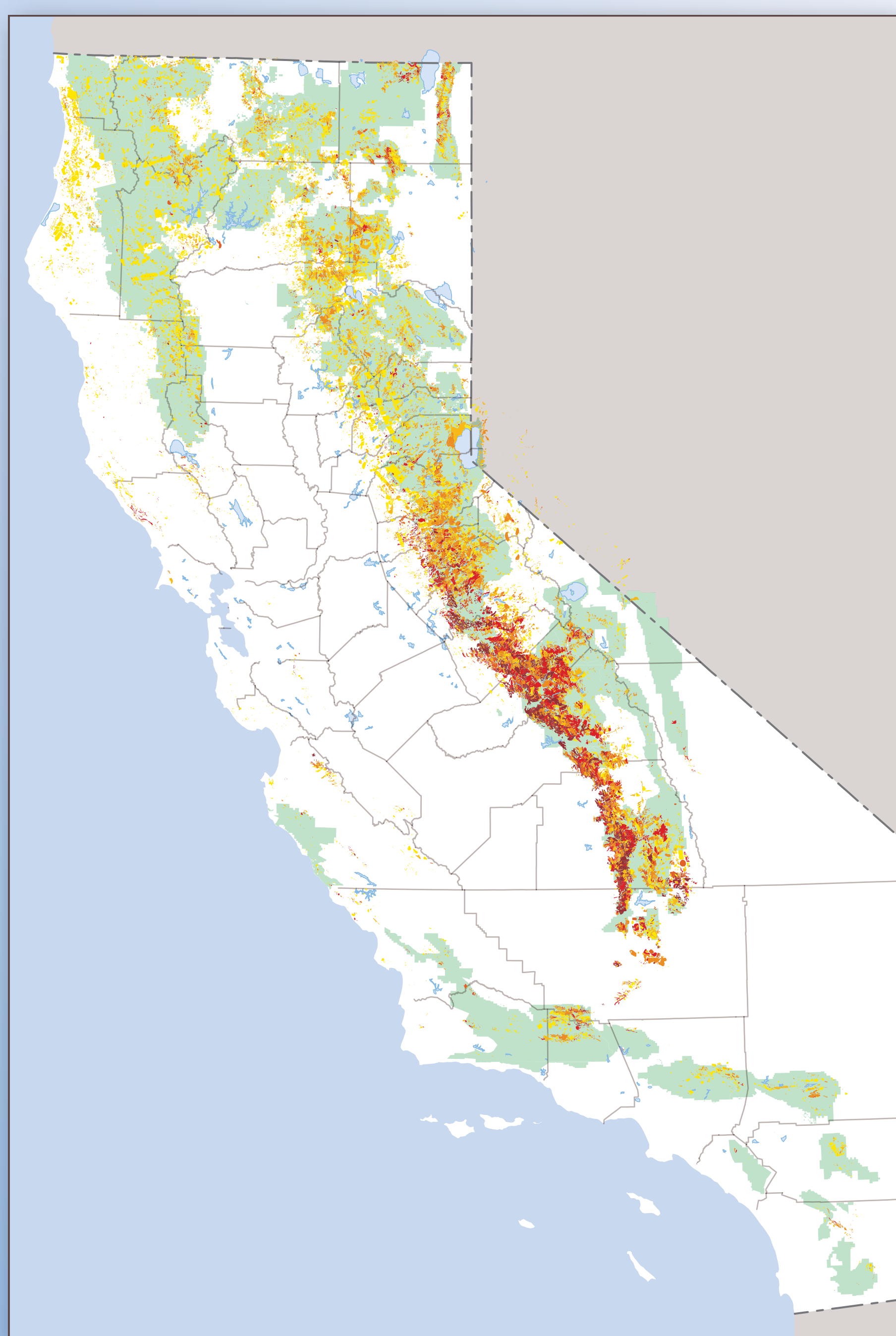
*This map depicts tree mortality only within the surveyed area.

Percent Trees Affected

- Very Light (1-3%)
- Light (4-10%)
- Moderate (11-29%)
- Severe (30-50%)
- Very Severe (>50%)

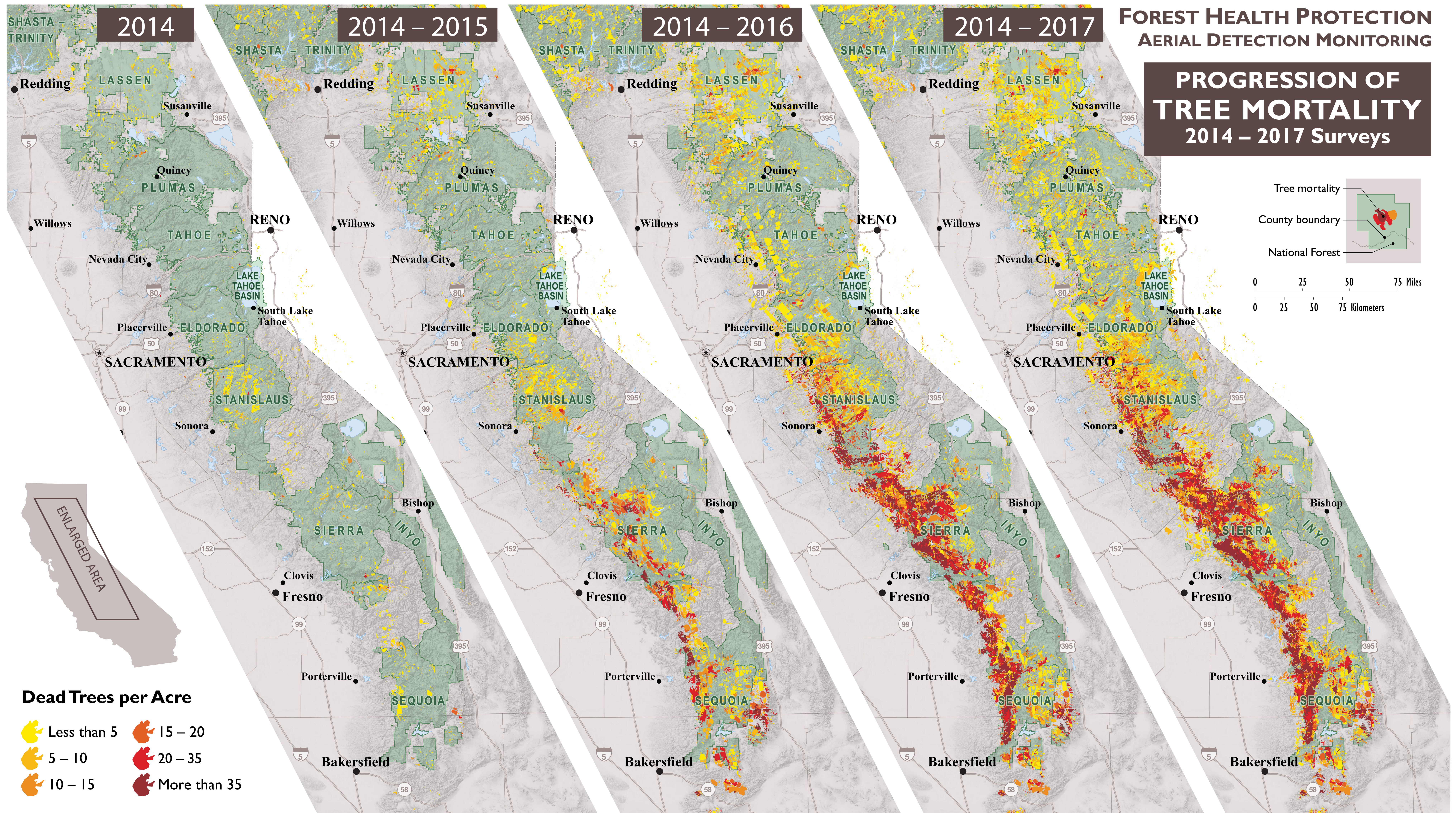
Map only depicts dead trees surveyed in 2017.
Areas of tree mortality are for visualization purposes only.

2014 – 2017 Tree Mortality



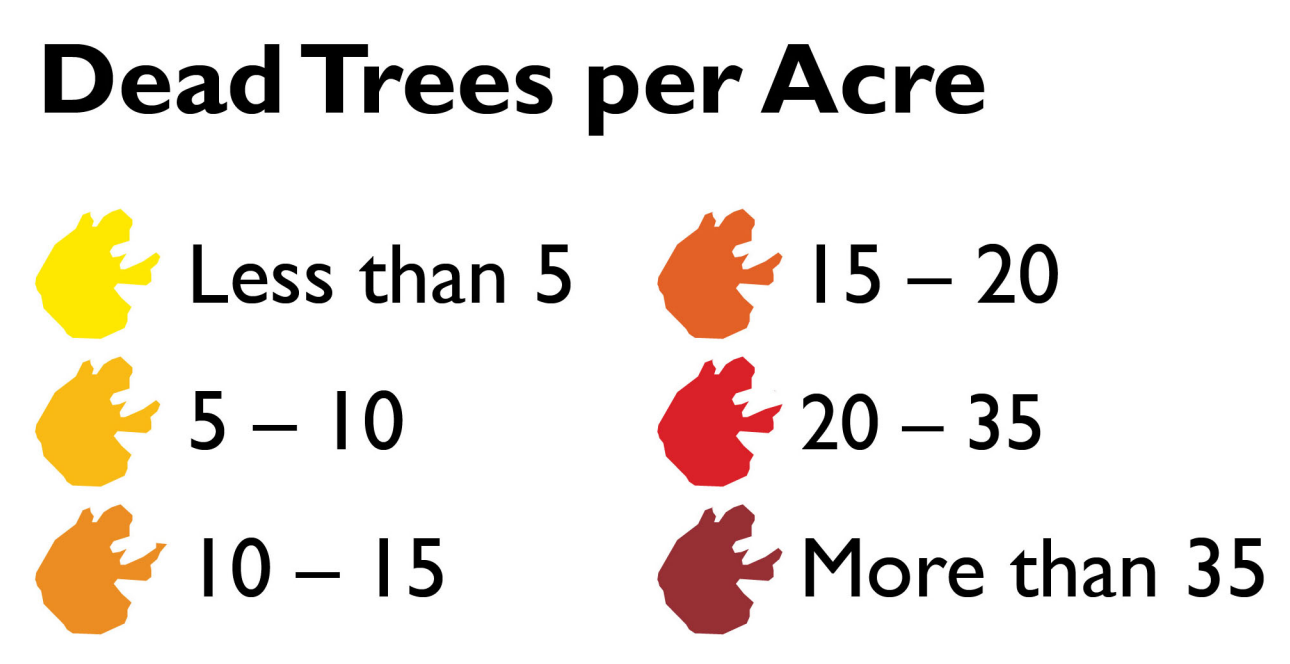
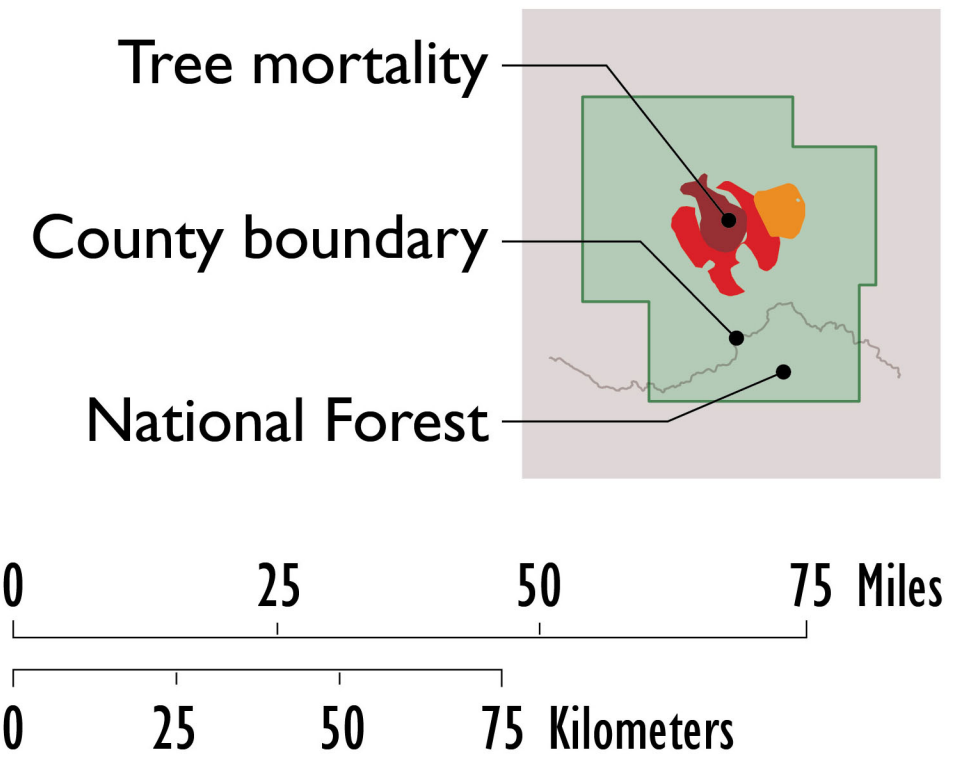


UNITED STATES DEPARTMENT OF AGRICULTURE



FOREST HEALTH PROTECTION AERIAL DETECTION MONITORING

PROGRESSION OF TREE MORTALITY 2014 - 2017 Surveys



FOREST SERVICE

FOREST HEALTH PROTECTION AERIAL DETECTION MONITORING

2014 - 2017 TREE MORTALITY

