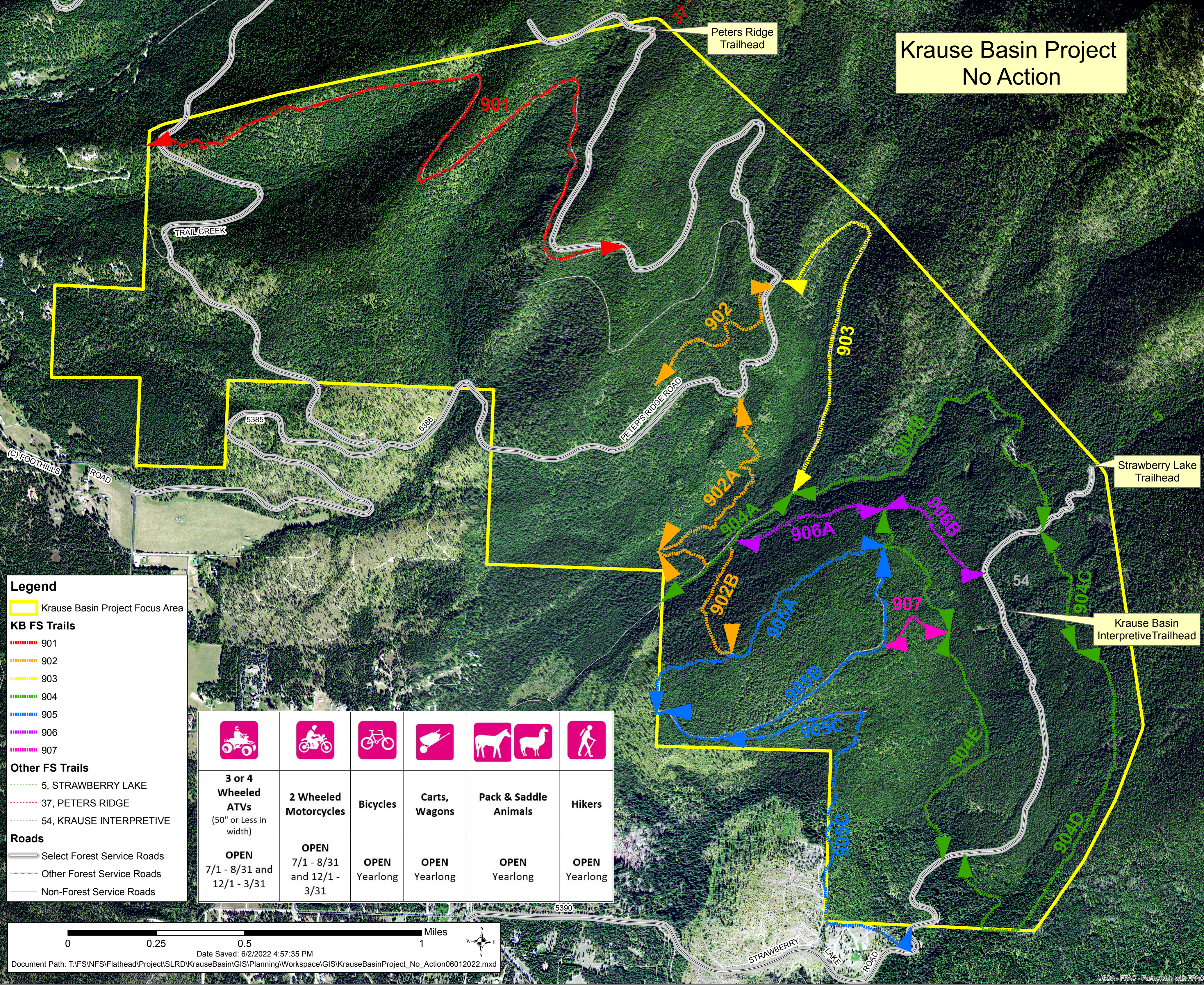


# Krause Basin Project No Action



**Legend**

- Krause Basin Project Focus Area

**KB FS Trails**


- 901 (Red dotted line)
- 902 (Orange dotted line)
- 903 (Yellow dotted line)
- 904 (Green dotted line)
- 905 (Blue dotted line)
- 906 (Purple dotted line)
- 907 (Pink dotted line)

**Other FS Trails**

- 5, STRAWBERRY LAKE (Green dashed line)
- 37, PETERS RIDGE (Red dashed line)
- 54, KRAUSE INTERPRETIVE (Grey dashed line)

**Roads**

- Select Forest Service Roads (Grey line)
- Other Forest Service Roads (Light grey line)
- Non-Forest Service Roads (Thin grey line)

					
<b>3 or 4 Wheeled ATVs</b> <small>(50" or Less in width)</small>	<b>2 Wheeled Motorcycles</b>	<b>Bicycles</b>	<b>Carts, Wagons</b>	<b>Pack &amp; Saddle Animals</b>	<b>Hikers</b>
<b>OPEN</b> 7/1 - 8/31 and 12/1 - 3/31	<b>OPEN</b> 7/1 - 8/31 and 12/1 - 3/31	<b>OPEN</b> Yearlong	<b>OPEN</b> Yearlong	<b>OPEN</b> Yearlong	<b>OPEN</b> Yearlong