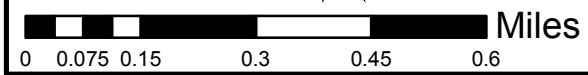


North Fork Pinnacle Sale

Sale Area Map 1 of 2
 Ouachita National Forest
 Jessieville-Winona-Fourche Ranger District
 Saline County
 Section 1, 2, 3, 11, 12; T.2N., R.18W.
 Section 6; T.2N., R.17W.
 Section 31; T.3N, R.17W
 Section 36; T.3N; R.18W



1:15,840
 1 inch = 1,320 feet



Created By: Shane Baker
 Date: 6/25/2022
 Projection: UTM Zone 15N
 Datum: NAD83

Boundaries	
①	Payment Unit Number, BT1.1
⬭	Payment Unit Boundary, BT1.1
⬭	Sale Area Boundary, BT1.1
⬭	Other Ownership

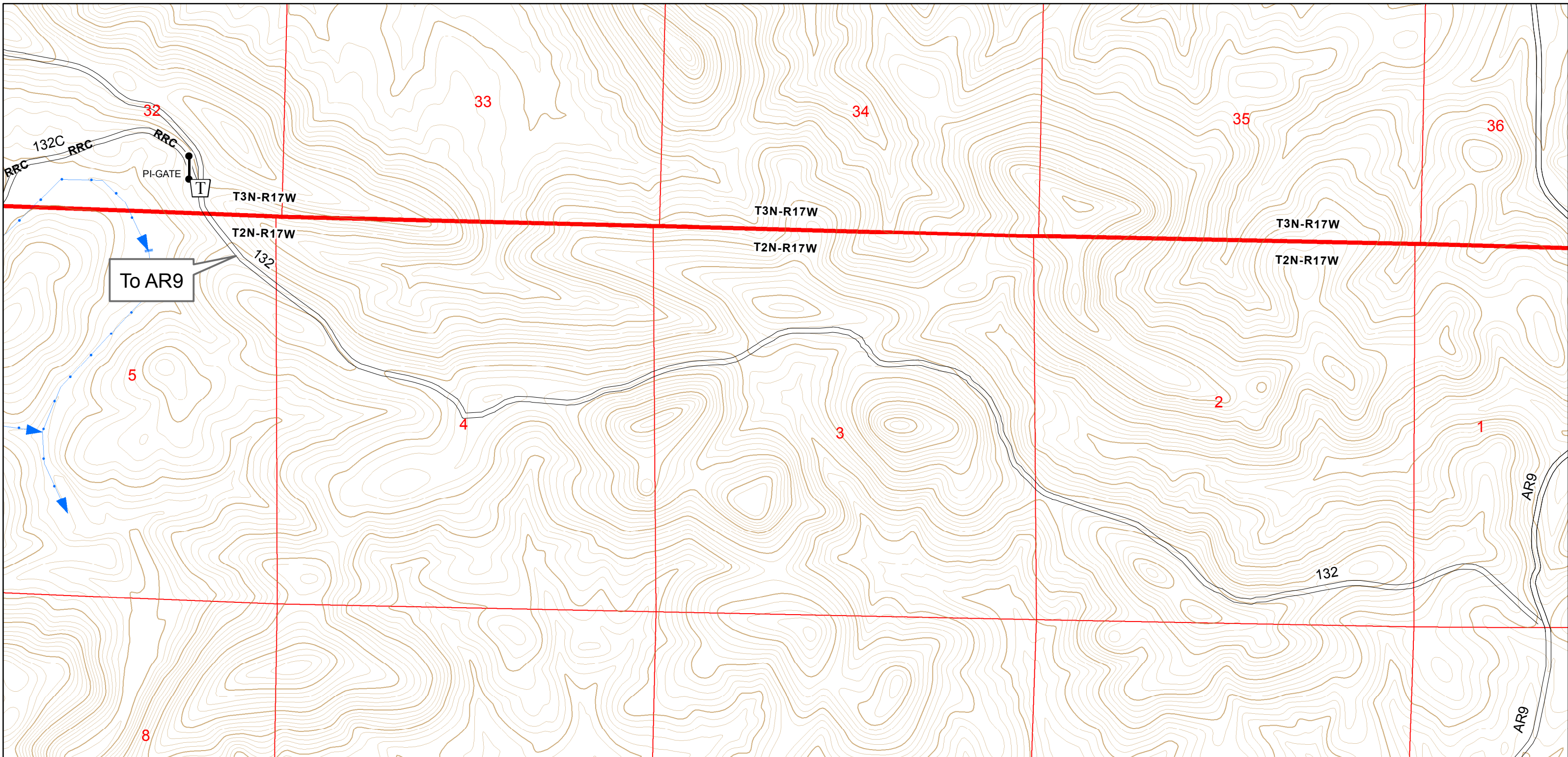
Contractual Features	
CTM	Cut Tree Marking, CT2.355#
LTM	Leave Tree Marking, BT2.35, CT2.355#
ST	Slash Treatment, CT6.7#
TR	Slash Treatment, CT6.7#
SSS	Slash Treatment, CT6.7#
SD	Other Slash Treatment, CT6.7#
T	Traffic Control Device, BT6.33

Transportation	
—	Existing Transportation System, BT5.12
RRC-RRC	Specified Road Reconstruction, BT5.2, AT7

Protected Features	
—●—	Stream Course Protection, BT6.5 CT6.5#
■	Protection of Improvements, BT6.22 PI SIGNAGE
⌋	Protection of Improvements, BT6.22 PI-GATE

Payment Unit	Symbol
1	LTM, TR, ST
2	LTM, SSS, TR, SD, ST
3	LTM, SSS, TR, SD, ST
4	LTM, TR
5	LTM, TR, SD, ST
6	LTM, SSS, TR, SD
7	LTM, SSS, TR, SD, ST
8	LTM, TR, SD, ST
9	LTM, SSS, TR, ST
10	CTM, SSS, TR
11	CTM, SSS, TR
99	CTM

Unit	Description
99	Where Payment Unit 99 is outside of the Sale Area Boundary designated on the Sale Area Map, the Sale Area Boundary is 25 feet on each side of the centerline of the roads listed below where they are designated with RRC on the Sale Area Map. Road Numbers: 132C



North Fork Pinnacle Sale

Sale Area Map 2 of 2
 Ouachita National Forest
 Jessieville-Winona-Fourche Ranger District
 Saline County
 Section 1, 2, 3, 11, 12; T.2N., R.18W.
 Section 6; T.2N., R.17W.
 Section 31; T.3N, R.17W
 Section 36; T.3N; R.18W



1:15,840
 1 inch = 1,320 feet

Created By: Shane Baker
 Date: 6/25/2022
 Projection: UTM Zone 15N
 Datum: NAD83

Boundaries	
	Payment Unit Number, BT1.1
	Payment Unit Boundary, BT1.1
	Sale Area Boundary, BT1.1
	Other Ownership

Contractual Features	
	Cut Tree Marking, CT2.355#
	Leave Tree Marking, BT2.35, CT2.355#
	Slash Treatment, CT6.7#
	Slash Treatment, CT6.7#
	Slash Treatment, CT6.7#
	Other Slash Treatment, CT6.7#
	Traffic Control Device, BT6.33

Transportation	
	Existing Transportation System, BT5.12
	Specified Road Reconstruction, BT5.2, AT7

Protected Features	
	Stream Course Protection, BT6.5 CT6.5#
	Protection of Improvements, BT6.22 PI SIGNAGE
	Protection of Improvements, BT6.22 PI-GATE

Payment Unit	Symbol
1	LTM, TR, ST
2	LTM, SSS, TR, SD, ST
3	LTM, SSS, TR, SD, ST
4	LTM, TR
5	LTM, TR, SD, ST
6	LTM, SSS, TR, SD
7	LTM, SSS, TR, SD, ST
8	LTM, TR, SD, ST
9	LTM, SSS, TR, ST
10	CTM, SSS, TR
11	CTM, SSS, TR
99	CTM

Unit	Description
99	Where Payment Unit 99 is outside of the Sale Area Boundary designated on the Sale Area Map, the Sale Area Boundary is 25 feet on each side of the centerline of the roads listed below where they are designated with RRC on the Sale Area Map. Road Numbers: 132C