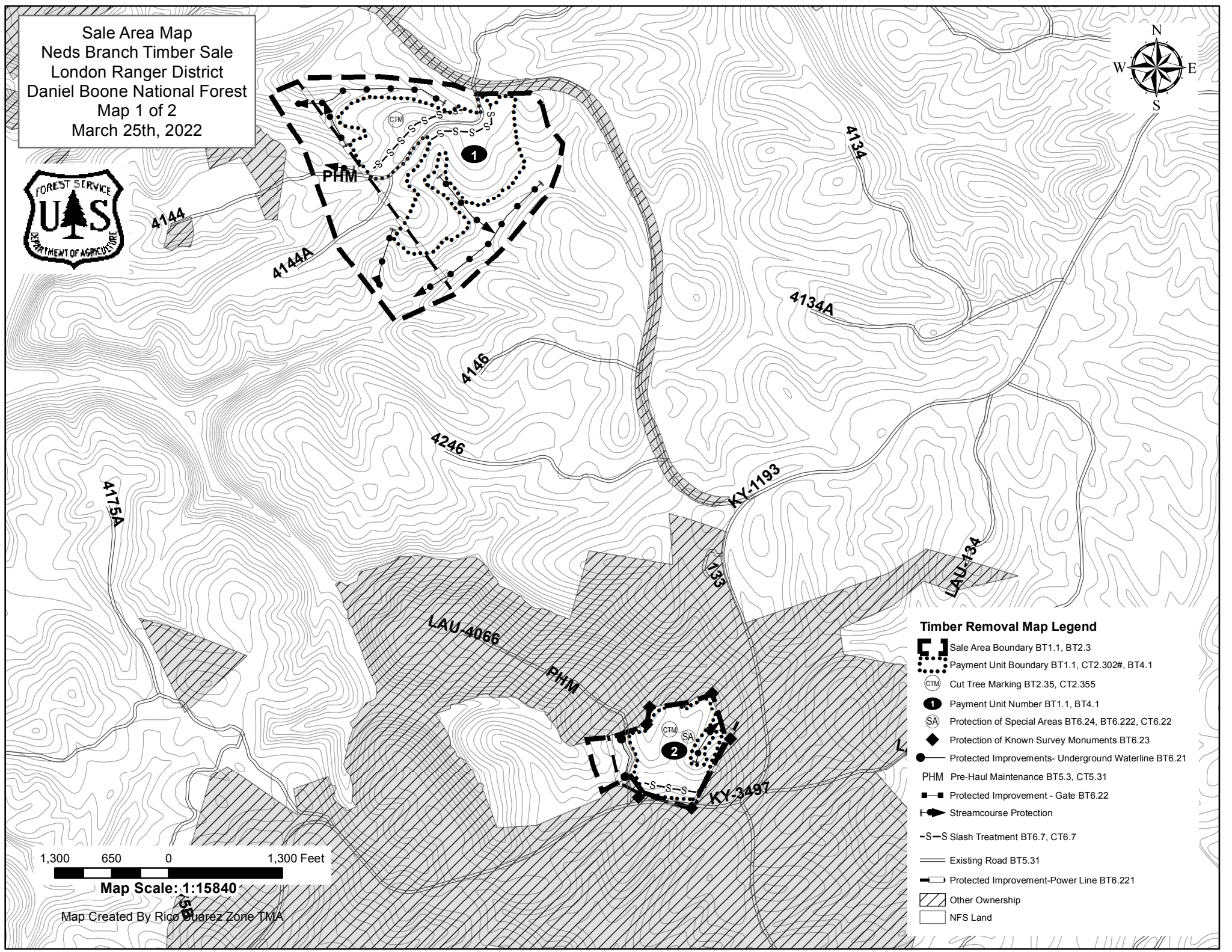


Sale Area Map  
 Neds Branch Timber Sale  
 London Ranger District  
 Daniel Boone National Forest  
 Map 1 of 2  
 March 25th, 2022



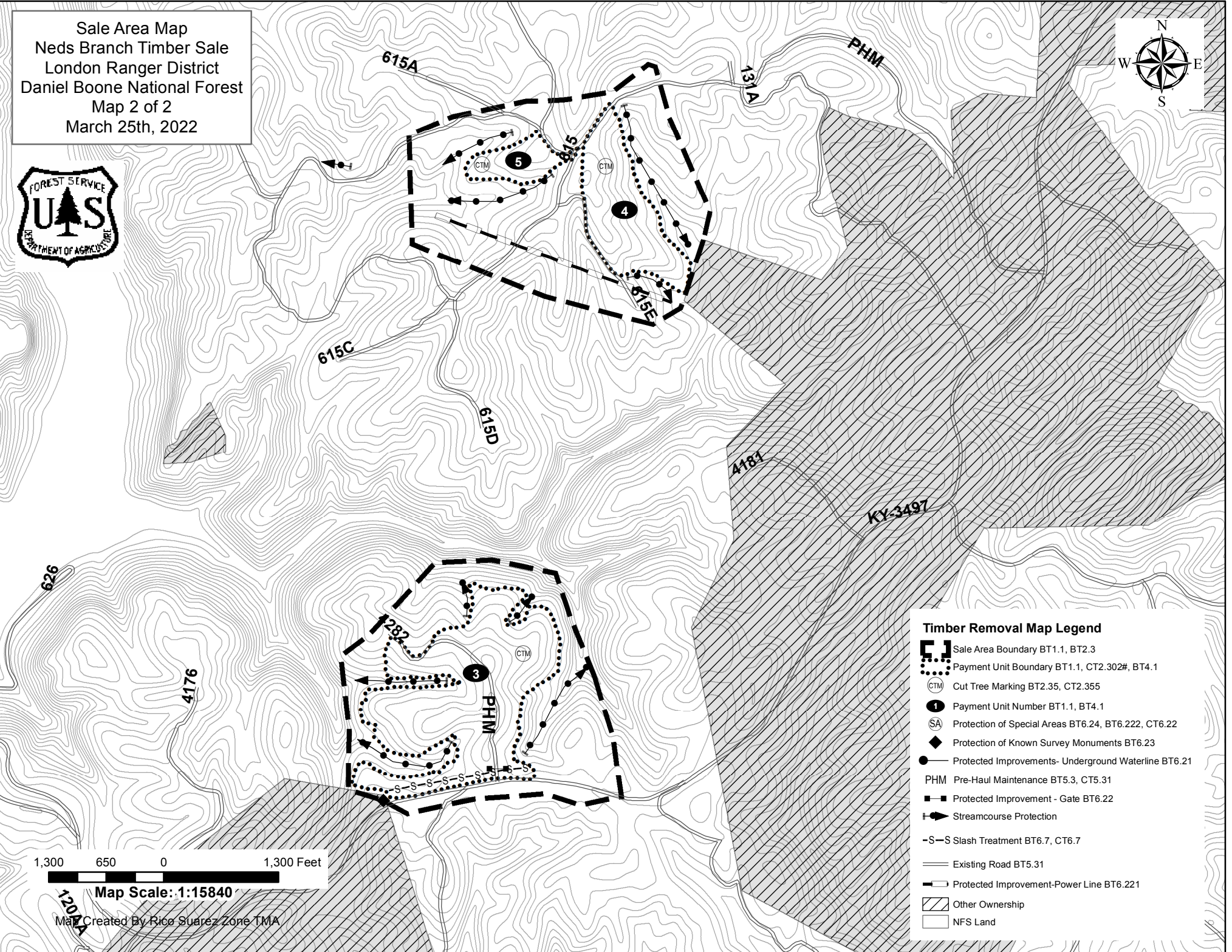
- Timber Removal Map Legend**
- Sale Area Boundary BT1.1, BT2.3
  - Payment Unit Boundary BT1.1, CT2.302#, BT4.1
  - Cut Tree Marking BT2.35, CT2.355
  - Payment Unit Number BT1.1, BT4.1
  - Protection of Special Areas BT6.24, BT6.222, CT6.22
  - Protection of Known Survey Monuments BT6.23
  - Protected Improvements- Underground Waterline BT6.21
  - PHM Pre-Haul Maintenance BT5.3, CT5.31
  - Protected Improvement - Gate BT6.22
  - Streamcourse Protection
  - S-S Slash Treatment BT6.7, CT6.7
  - Existing Road BT5.31
  - Protected Improvement-Power Line BT6.221
  - Other Ownership
  - NFS Land

1,300 650 0 1,300 Feet

Map Scale: 1:15840

Map Created By Rico Suarez Zone TMA

Sale Area Map  
 Neds Branch Timber Sale  
 London Ranger District  
 Daniel Boone National Forest  
 Map 2 of 2  
 March 25th, 2022



**Timber Removal Map Legend**

- Sale Area Boundary BT1.1, BT2.3
- Payment Unit Boundary BT1.1, CT2.302#, BT4.1
- Cut Tree Marking BT2.35, CT2.355
- Payment Unit Number BT1.1, BT4.1
- Protection of Special Areas BT6.24, BT6.222, CT6.22
- Protection of Known Survey Monuments BT6.23
- Protected Improvements- Underground Waterline BT6.21
- PHM Pre-Haul Maintenance BT5.3, CT5.31
- Protected Improvement - Gate BT6.22
- Streamcourse Protection
- S-S Slash Treatment BT6.7, CT6.7
- Existing Road BT5.31
- Protected Improvement-Power Line BT6.221
- Other Ownership
- NFS Land

1,300 650 0 1,300 Feet

Map Scale: 1:15840

Map Created By Rico Suarez Zone TMA