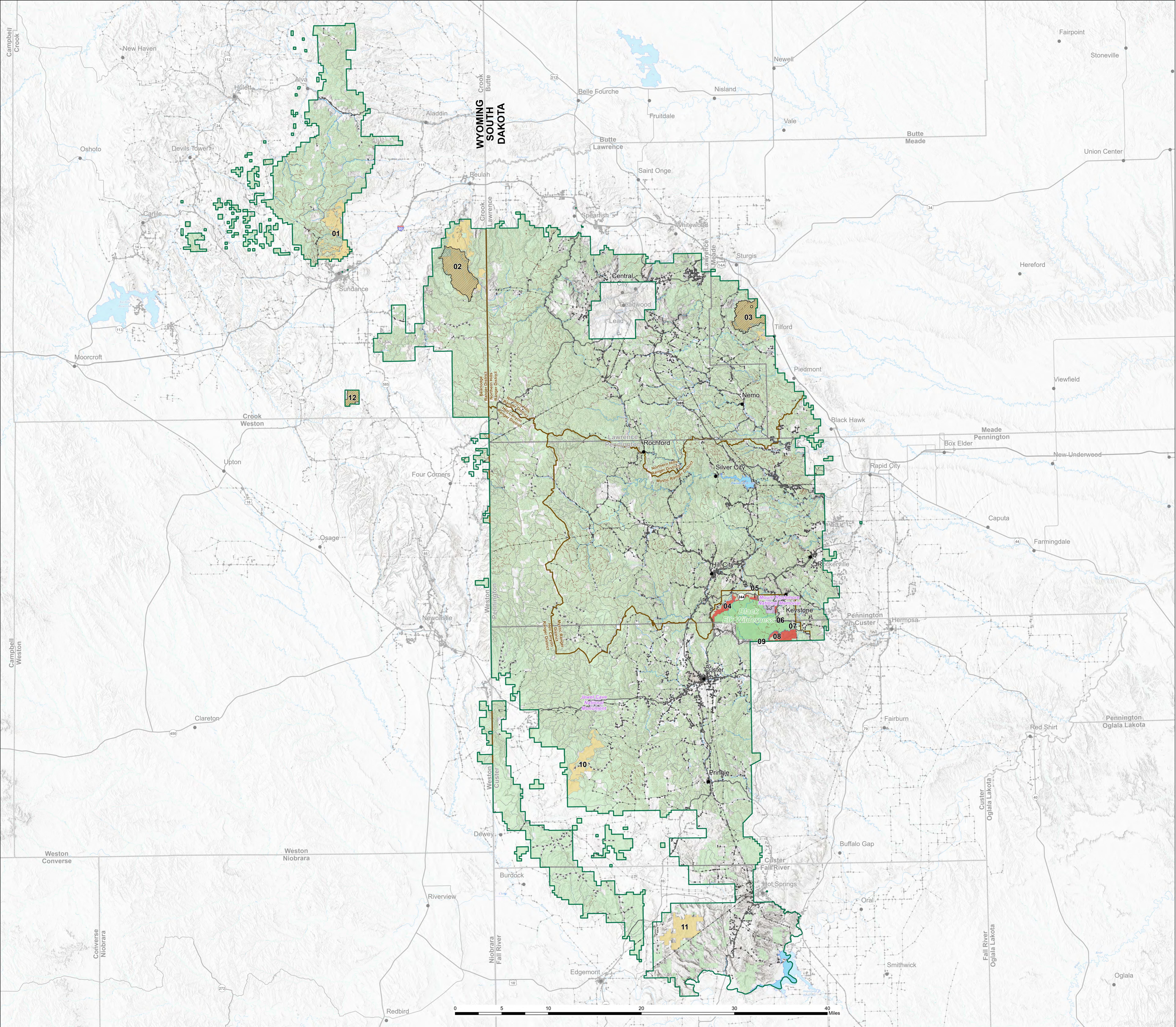


January 4, 2022

**DRAFT**

# Black Hills National Forest Forest Plan Revision Wilderness Inventory



- Town/City
- Powerline
- Pipeline
- USFS Trail
- USFS Road
- Tree Removal
- Black Hills Forest Boundary
- Ranger District Boundary
- Roadless Area
- Wilderness Area
- Wilderness Inventory Polygon**
- Larger than 5k Acres or Eligible for Potential Preservation
- Wilderness Adjacent
- Land Ownership**
- National Park Service (NPS)
- Private
- US Forest Service (USFS)

**ATTENTION**  
This product is reproduced from geospatial information prepared by the U.S. Department of Agriculture, Forest Service. GIS data and product accuracy may vary. They may be developed from sources of differing accuracy, accurate only at certain scales, based on modeling or interpretation, incomplete while being created or revised, etc. Using GIS products for purposes other than those for which they were created, may yield inaccurate or misleading results. The Forest Service reserves the right to correct, update, modify, or replace GIS products based on new inventories, new or revised information, and if necessary in conjunction with other federal, state or local public agencies or the public in general as required by policy or regulation. Previous recipients of the products may not be notified unless required by policy or regulation.

1/4/2022  
Coordinate System: NAD 1983 UTM Zone 13N  
USFS R2 Plan Revision Support Team  
GIS Specialist