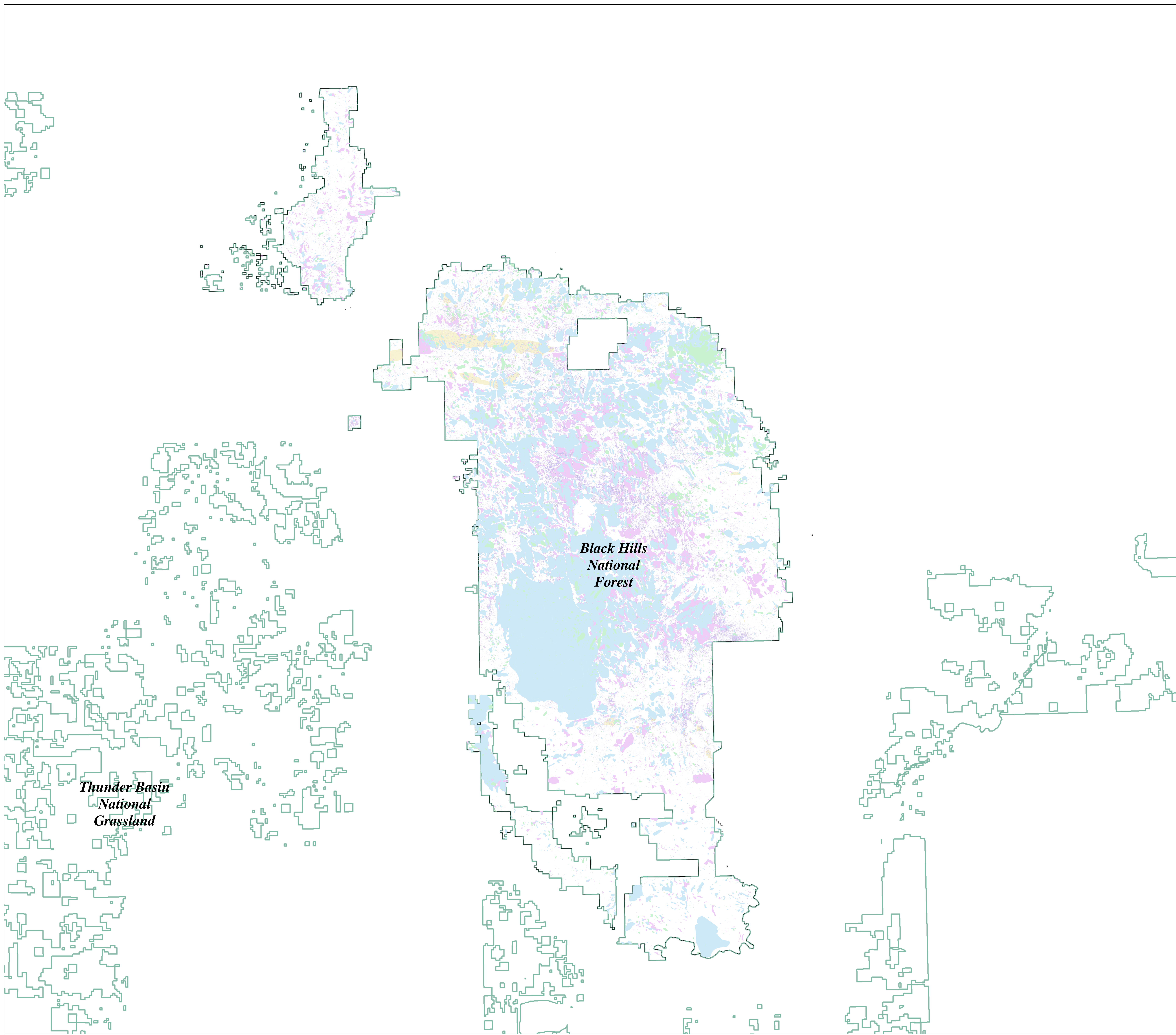


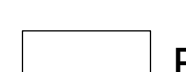


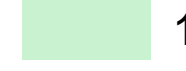
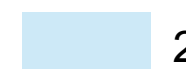
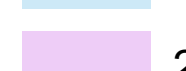

February 2022

Black Hills National Forest

All Vegetation Damage Determined During Aerial Detection Surveys



Legend

-  Black Hills Boundary 2021
-  Surrounding Forest Boundary
-  1995-1999
-  2000-2003
-  2004-2011
-  2012-2016
-  2017-2020

ATTENTION
 This product is reproduced from geospatial information prepared by the U.S. Department of Agriculture, Forest Service. GIS data and product accuracy may vary. They may be developed from sources of differing accuracy, accurate only at certain scales, based on modeling or interpretation, incomplete while being created or revised, etc. Using GIS products for purposes other than those for which they were created, may yield inaccurate or misleading results. The Forest Service reserves the right to correct, update, modify, or replace GIS products based on new inventories, new or revised information, and if necessary in conjunction with other federal, state, or local public agencies or the public in general as required by policy or regulation. Previous recipients of the products may not be notified unless required by policy or regulation.