



**UNITED STATES DEPARTMENT OF AGRICULTURE  
FOREST SERVICE  
COCONINO NATIONAL FOREST, FLAGSTAFF RANGER DISTRICT  
TEMPORARY AREA AND ROAD CLOSURE FOR THE PIPELINE FIRE**

**PROHIBITIONS**

Pursuant to 16 U.S.C. § 551 and 36 C.F.R. § 261.50(a) and (b), the following acts are prohibited on the roads and trails and within the area described in this Order (the “Restricted Area”) and as depicted in the attached map, hereby incorporated into this Order as Exhibit A, within the Coconino National Forest, Flagstaff Ranger District, Coconino County, Arizona.

1. Going into or being upon the Restricted Area. **36 C.F.R. § 261.52(e).**
2. Being on the road. **36 C.F.R. § 261.54(e).**
3. Being on the trail. **36 C.F.R. § 261.55(a).**

**EXEMPTIONS**

Pursuant to 36 C.F.R. §261.50(e), the following persons are exempt from the provisions in this Order:

1. Persons with a written Forest Service authorization specifically exempting them from the effect of this Order.
2. Any Federal, State, or local officer, member of an organized rescue or firefighting force, in the performance of official duty.
3. Residents using roads in the Restricted Area to the extent necessary to access their private property.

**RESTRICTED AREA**

As depicted in Exhibit A, all National Forest System lands, roads, and trails within the boundary starting on the Coconino National Forest at the junction of US 180 and Forest Road (FR) 523 then continuing east on FR 523 to the junction with FR 514, then continuing east on FR 514 to the junction with US 89, then continuing north along the east edge of US 89 to the Coconino National Forest boundary, then following the Coconino National Forest boundary in a general eastern, then southern, direction to north edge of Leupp Road, then continuing southwest along the north edge of Leupp Road to Townsend-Winona Road, then continuing along the north edge

of Townsend-Winona Road to US 89N, then continuing west along the north edge of US-89 to US 66, then continuing west along the north edge of US 66 to I-40, then continuing along the north edge of I-40 to FR 171, then continuing along the east edge of FR 171 to FR 193, then continuing north and east along the south edge of FR 193 to US 180, then continuing north along the east edge of US 180, back to the point of beginning at the intersection of US 180 and FR 523.

**NOTE:** FR 523 and FR 514 are closed. FR 171 and FR 193 remain open to travel. US 180, US 89, Townsend-Winona Road, US-66, Leupp Road and I-40 are not affected by this Order

## **PURPOSE**

The purpose of this Order is to protect the public's health and safety from unsafe conditions resulting from the Pipeline Fire.

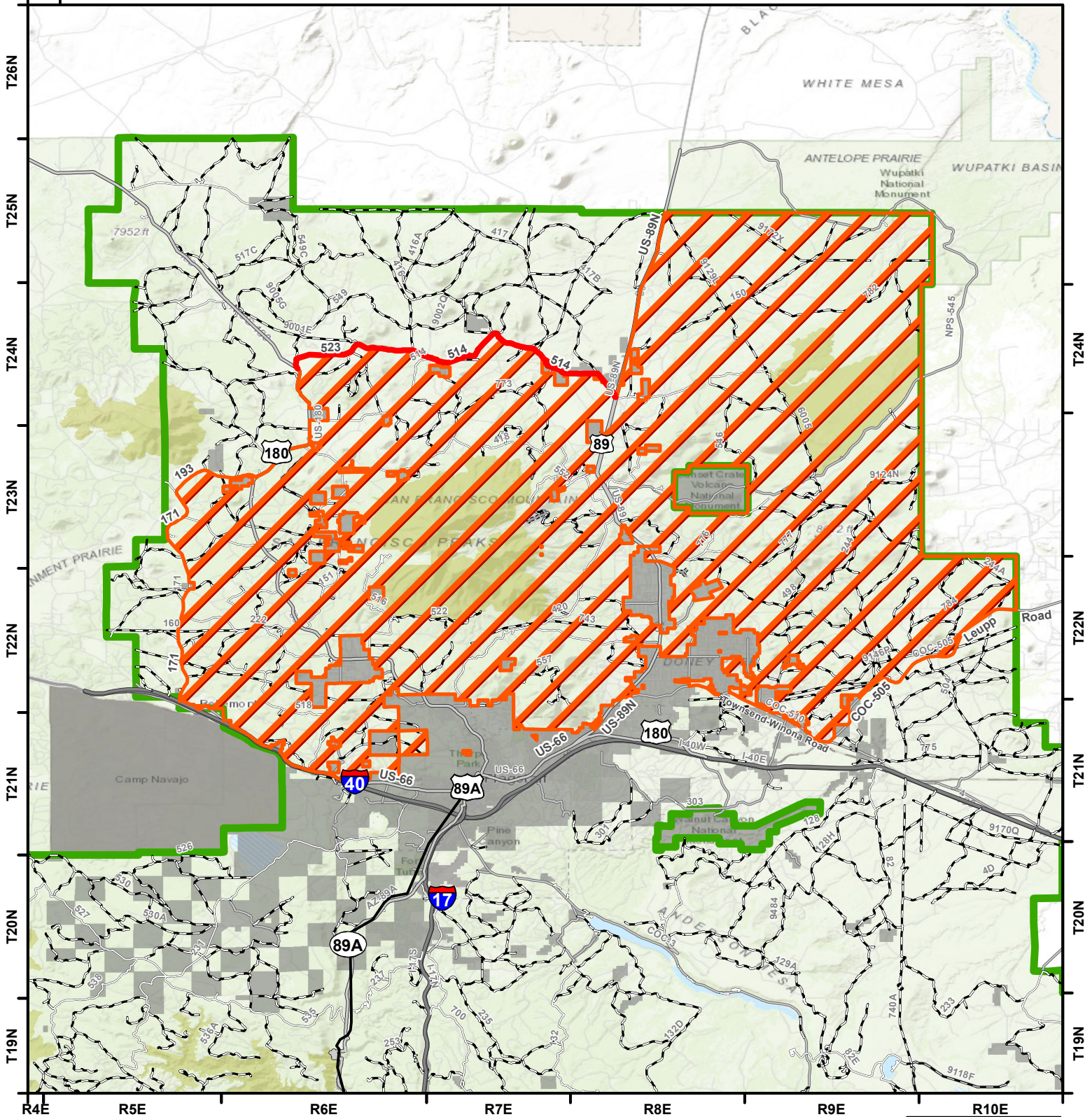
## **IMPLEMENTATION**

1. This Order will be effective on June 13th, 2022, at 8:00 AM, and shall remain in effect until August 20<sup>th</sup>, 2022, or until rescinded, whichever comes first.
2. A map identifying the Restricted Area is attached and made part of this Order as Exhibit A. For a digital version of the Order map for the Coconino NF, go to <https://www.fs.usda.gov/alerts/coconino/alerts-notices>.
3. Any violation of the prohibitions in this Order is punishable as a Class B misdemeanor by a fine of not more than \$5,000 for an individual or \$10,000 for an organization, or by imprisonment for not more than six (6) months, or both (*see* 16 U.S.C. § 551, 18 U.S.C. § 3571(b)(6), 18 U.S.C. § 3581(b)(7)).
4. Further information regarding this Order may be obtained at the Coconino National Forest Supervisor's Office in Flagstaff, Arizona, telephone number (928) 527-3600 and the Flagstaff Ranger District located in Flagstaff, Arizona, telephone number (928) 526-0866.
5. This Order supersedes any previous Orders prohibiting the same acts covered by this Order.

Done this 13<sup>th</sup> day of June, 2022

---

Laura Jo West  
Forest Supervisor  
Coconino National Forest



**Forest Order Information**

Order Number: 03-04-22-17  
 Start Date: 06/13/2022 08:00 AM  
 End Date: 08/20/2022

**Disclaimer**

The USDA Forest Service makes no warranty, expressed or implied regarding the data displayed on this map, and reserves the right to correct, update, modify, or replace this information without notification.

**Legend**



-  Restricted Road
-  Restricted Area
-  Coconino NF Boundary
-  Non-FS Lands
-  Wilderness Area

**ARIZONA**  
 Coconino County

