



**PURPOSE AND CONTENTS OF THIS MAP**

The designations shown on this motor vehicle use map (MVUM) were made by the responsible official pursuant to 36 CFR 212.51, are effective as of the date on the front cover of this MVUM, and will remain in effect until superseded by next year's MVUM.

It is the responsibility of the user to acquire the current MVUM. This MVUM shows the National Forest System roads, National Forest System trails, and the areas on National Forest System lands in the White River National Forest that are designated for motor vehicle use pursuant to 36 CFR 212.51. This MVUM also identifies the vehicle classes allowed on each route and in each area; and any seasonal restrictions that apply on those routes and in those areas.

Designation of a road, trail, or area for motor vehicle use by a particular class of vehicle under 36 CFR 212.51 should not be interpreted as encouraging or inviting use or implying that the road, trail, or area is passable, actively maintained, or safe for travel. Motor vehicle designations include parking along designated routes and facilities associated with designated routes when it is safe to do so and when not causing damage to National Forest System resources. Seasonal weather conditions and natural events may render designated roads and trails impassable for extended periods. Designated areas may contain dangerous or impassable terrain. Many designated roads and trails may be passable only by high-clearance vehicles or four-wheel-drive vehicles. Maintenance of designated roads and trails will depend on available resources, and many may receive little maintenance.

This motor vehicle use map identifies those roads, trails, and areas designated for the motor vehicle use under 36 CFR 212.51 for the purpose of enforcing the prohibition at 36 CFR 261.13. This is a limited purpose. The other public roads are shown for information and navigation purposes only and are not subject to designation under the Forest Service travel management regulation.

These designations apply only to National Forest System roads, National Forest System trails, and areas on National Forest System lands.

**PROHIBITIONS**

It is prohibited to possess or operate a motor vehicle on National Forest System lands on the White River National Forest other than in accordance with these designations (CFR 261.13)

Violators of 36 CFR 261.13 are subject to a fine of up to \$5,000, imprisonment for up to 6 months, or both (18 U.S.C. 3571(e)). This prohibition applies regardless of the presence or absence of signs.

This map does not display nonmotorized uses, over-snow uses, or other facilities and attractions on the White River National Forest. Obtain forest visitor information from the local national forest office.

Designated roads, trails and areas may also be subject to temporary, emergency closures. As a visitor, you must comply with signs notifying you of such restrictions. A national forest may issue an order to close a road, trail or area on a temporary basis to protect the life, health, or safety of forest visitors or the natural or cultural resources in these areas. Such a temporary and/or emergency closure is consistent with the Travel Management Rule (36 CFR 212.52 (b), 36 CFR 261 subpart B).

The designation "road or trail open to all motor vehicles" does not supersede State traffic law.

**EXPLANATION OF LEGEND ITEMS**

Roads Open to Highway Legal Vehicles Only: \_\_\_\_\_

Roads Open to All Vehicles \_\_\_\_\_

Trails Open to Motorcycles Only \_\_\_\_\_

Special Vehicle Designation (See Table) \_\_\_\_\_

Seasonal Designation (See Table) \_\_\_\_\_

Dispersed Camping (See Table) \_\_\_\_\_

Interstate \_\_\_\_\_

Highways, U.S. State \_\_\_\_\_

Other Public Roads \_\_\_\_\_

Short Route Identifier \_\_\_\_\_

FS Campground \_\_\_\_\_

Information Site \_\_\_\_\_

Peaks \_\_\_\_\_

Forest or Unit Boundary \_\_\_\_\_

National Forest System Lands \_\_\_\_\_

Non-National Forest System Lands within the National Forest \_\_\_\_\_

Wilderness Area \_\_\_\_\_

Political Boundary \_\_\_\_\_

Township and Range Lines \_\_\_\_\_

Section Lines \_\_\_\_\_

Lakes and Rivers \_\_\_\_\_

**OPERATOR RESPONSIBILITIES**

Operating a motor vehicle on National Forest System roads, National Forest System trails, and in areas on National Forest System lands carries a greater responsibility than operating that vehicle in a city or other developed setting. Not only must you know and follow all applicable traffic laws, you need to show concern for the environment as well as other forest users.

The misuse of motor vehicles can lead to the temporary or permanent closure of any designated road, trail, or area. As a motor vehicle operator, you are also subject to State traffic law, including State requirements for licensing, registration, and operation of the vehicle in question.

Motor vehicle use, especially off-highway vehicle use, involves inherent risks that may cause property damage, serious injury, and possibly death to participants. Drive cautiously and anticipate rough surfaces and features, such as snow, mud, vegetation, and water crossings common to remote driving conditions. By your participation, you voluntarily assume full responsibility for these damages, risks, and dangers. Take care at all times to protect yourself and those under your responsibility.

Much of the White River National Forest is remote. Medical assistance may not be readily available. Cellular telephones do not work in many areas of the White River National Forest. Take adequate food, water, first-aid supplies, and other equipment appropriate for the conditions and expected weather.

ALWAYS REMEMBER TO RESPECT PRIVATE LAND! PROTECT YOUR PRIVILEGE. STAY ON DESIGNATED ROADS AND TRAILS AND IN DESIGNATED AREAS.

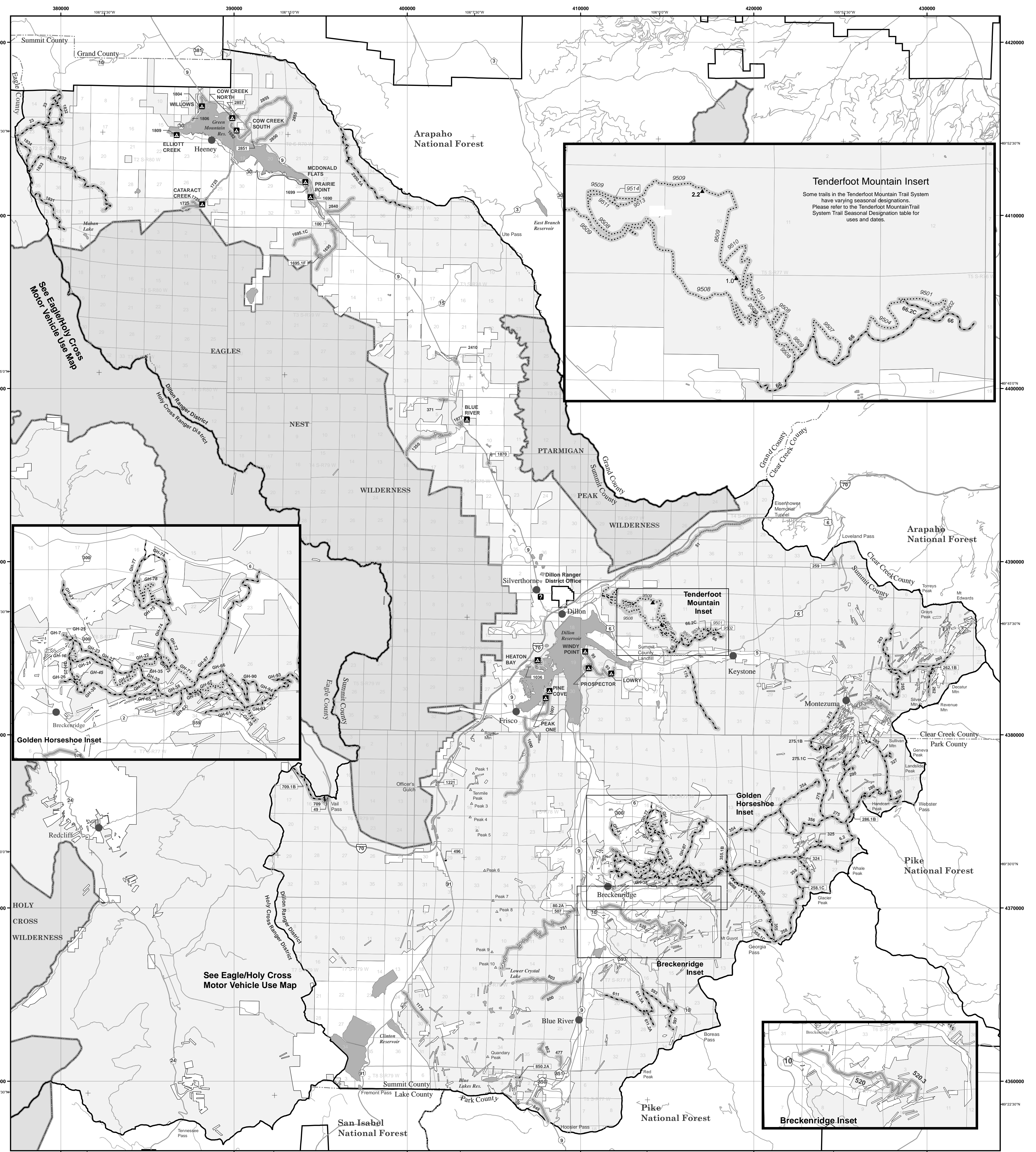
Read and understand this map in its entirety. If you have questions, please contact the White River National Forest for clarification.

As a motor vehicle operator on a National Forest System road, trail, or area you must comply with this map, as well as all Federal, State, and local laws and regulations. Compliance with these rules is your responsibility.

**BLANKET STATEMENTS FOR TRAVEL MANAGEMENT**  
Motor vehicles may be parked up to 30 feet from the edge of the road surface when it is safe to do so without causing damage to NFS resources or facilities, unless prohibited by state law, a traffic sign, or an order (36 CFR 261.54).

**BLANKET STATEMENT FOR TRAVEL MANAGEMENT EFFECTIVE DATES**  
This Motor Vehicle Use Map covers the summer season which occurs from May 21 to November 22. Please refer to the Winter Motor Vehicle Use Map for dates outside the summer season.

**Dispersed Camping Table**  
Motor vehicle use off of designated roads for the purpose of dispersed camping is permitted for up to 300 feet from the centerline of the road (both sides of the road), where not specifically prohibited, unsafe, or causing resource damage. Motor vehicles used for dispersed camping shall be the same vehicle as the road allows and shall be the same season as the road is open. Motorized access for dispersed camping is allowed only on National Forest System land.  
This applies to the following roads: 1831, 1832, 1833, 1834, 23



Route Number	Legend	Dates Allowed	Beginning Mile Post	Ending Mile Post
9501, 9502, 9504, 9507, 9508, 9510, 9511, 9512, 9513, 9514	Trails open to motorcycles only, with Seasonal Designations	07/01-10/09	Entire Length	
9509	Trails open to motorcycles only, with Seasonal Designations	07/01-11/22	0.0	2.2
9509	Trails open to motorcycles only, with Seasonal Designations	07/01-10/09	2.2	End
9509	Trails open to all vehicles, with Seasonal Designations	09/01-11/22	0.0	1.0
9509	Trails open to vehicles 62" or less in width, with Seasonal Designations	09/01-11/22	1.0	2.2

Route Number	Legend	Dates Allowed	Beginning Mile Post	Ending Mile Post
264	Roads open to highway legal vehicles only, with Seasonal Designations	05/21-11/22	0.6	4.0
275	Roads open to all Vehicles, with Seasonal Designations	05/21-11/22	0.6	7.2
285	Roads open to all Vehicles, with Seasonal Designations	05/21-11/22	0.7	4.1
593	Roads open to all Vehicles, with Seasonal Designations	05/21-11/22	2.7	4.6
611	Roads open to all Vehicles, with Seasonal Designations	05/21-11/22	1.4	3.2
1350	Roads open to highway legal vehicles only, with Seasonal Designations	05/21-11/22	0.8	3.3
1725	Roads open to highway legal vehicles only, with Seasonal Designations	05/21-11/22	1.9	2.9
GH-74	Roads open to all Vehicles, with Seasonal Designations	05/21-11/22	0.4	2.8
GH-77	Roads open to all Vehicles, with Seasonal Designations	05/21-11/22	0.4	1.1
100, 1000, 1178, 1726, 1806, 2410, 259, 2840, 2851, 2857, 371, 477, 507, 520, 520.3, 751, 80.2A, 800, 803, 849, 852	Roads open to highway legal vehicles only, with Seasonal Designations	05/21-11/22	Entire Length	
1007, 1007.1A, 1009, 1009.1A, 1009.1B, 1009.1C	Roads open to highway legal vehicles only, with Seasonal Designations	05/16-09/15	Entire Length	
1035, 1035.1A, 1035.1B, 1035.1C, 1035.1D, 1035.1E, 1035.1F	Roads open to highway legal vehicles only, with Seasonal Designations	05/16-10/13	Entire Length	
1036, 93, 93.1A, 95, 95.1B, 96, 96.1A, 96.1B, 96.1C, 96.1D, 96.1E	Roads open to highway legal vehicles only, with Seasonal Designations	05/21-09/15	Entire Length	
1690, 1690.1A, 1699, 1925.1C, 1809	Roads open to highway legal vehicles only, with Seasonal Designations	05/21-10/31	Entire Length	
1692, 1693, 1804, 1804.1A, 1877	Roads open to highway legal vehicles only, with Seasonal Designations	05/21-10/06	Entire Length	
1695, 1695.1C, 1695.1F, 2850, 2855, 2855.1A	Roads open to highway legal vehicles only, with Seasonal Designations	06/21-11/22	Entire Length	
175	Roads open to all Vehicles, with Seasonal Designations	06/21-11/22	Entire Length	
1831, 1832, 1833, 1834, 1870, 23, 258, 258.1C, 260, 262, 262.1B, 263, 265, 275.1B, 275.1C, 286, 286.1B, 289, 290, 324, 325, 327, 354, 355, 355.1B, 355.1C, 355.1E, 507, 5.2, 611.2A, 611.3A, 650.2A, 850.3A, GH-7, GH-21, GH-22, GH-23, GH-24, GH-25, GH-26, GH-35, GH-38, GH-39, GH-61, GH-62, GH-66, GH-72, GH-75, GH-79, GH-87, GH-90, GH-93, GH-94	Roads open to all Vehicles, with Seasonal Designations	05/21-11/22	Entire Length	
49, 709.1B	Roads open to highway legal vehicles only, with Seasonal Designations	06/21-11/15	Entire Length	
66, 66.2B, 66.2C	Roads open to all Vehicles, with Seasonal Designations	07/01-11/22	Entire Length	
709	Roads open to all Vehicles, with Seasonal Designations	06/21-11/15	Entire Length	
2950.5A	Roads open to all Vehicles, with Seasonal Designations	6/15 - 11/22	Entire Length	

Route Number	Legend	Dates Allowed	Beginning Mile Post	Ending Mile Post
908B, GH-16, GH-44, GH-45, GH-65, GH-67, GH-70, GH-71, GH-78	Trails open to motorcycles, with Seasonal Designations	05/21-11/22	Entire Length	

Route Number	Legend	Dates Allowed	Beginning Mile Post	Ending Mile Post
51	Trails open to vehicles 62" or less in width, with Seasonal Designations	05/21-11/22	Entire Length	

Route Number	Route Designation	Dates Allowed	Length in Feet
9514	Trails Open to Motorcycles, Seasonal	07/01/10/10	235

Campground	Route Number	Legend	Dates Allowed	Beginning Mile Post	Ending Mile Post
Blue River, Cow Creek North, Cow Creek South, Willows	All	Roads open to highway legal vehicles only, with Seasonal Designations		Entire Length	
Cataract Creek, Elliott Creek, McDonald Flats, Prairie Point	All	Roads open to highway legal vehicles only, with Seasonal Designations		Entire Length	
Heaton Bay	All	Roads open to highway legal vehicles only, with Seasonal Designations		Entire Length	
Lowry, Prospector, Windy Point Group	All	Roads open to highway legal vehicles only, with Seasonal Designations		Entire Length	
Peak One, Pine Cove	All	Roads open to highway legal vehicles only, with Seasonal Designations		Entire Length	

Route Number	Route Designation	Dates Allowed	Length in Feet
100	Roads Open to Highway Legal Vehicles Only, Seasonal	05/21-11/22	890
1036	Roads Open to Highway Legal Vehicles Only, Seasonal	05/21-09/15	655
1221	Roads Open to Highway Legal Vehicles Only, Yearlong	01/01-12/31	920
1695.1F	Roads Open to Highway Legal Vehicles Only, Seasonal	06/21-11/22	1105
1870	Roads Open to All Vehicles, Seasonal	05/21-11/22	270
258.1C	Roads Open to All Vehicles, Seasonal	05/21-11/22	445
259	Roads Open to Highway Legal Vehicles Only, Seasonal	05/21-11/22	645
262.1B	Roads Open to All Vehicles, Seasonal	05/21-11/22	1000
2851	Roads Open to Highway Legal Vehicles Only, Seasonal	05/21-11/22	450
2857	Roads Open to Highway Legal Vehicles Only, Seasonal	05/21-11/22	220
286.1B	Roads Open to All Vehicles, Seasonal	05/21-11/22	755
324	Roads Open to All Vehicles, Seasonal	05/21-11/22	1105
49	Roads Open to Highway Legal Vehicles Only, Seasonal	06/21-11/15	725
496	Roads Open to All Vehicles, Yearlong	01/01-12/31	1160
507	Roads Open to Highway Legal Vehicles Only, Seasonal	05/21-11/22	1720
709.1B	Roads Open to Highway Legal Vehicles Only, Seasonal	06/21-11/15	420
80.2A	Roads Open to Highway Legal Vehicles Only, Seasonal	05/21-11/22	1190
850.2A	Roads Open to All Vehicles, Seasonal	05/21-11/22	1270

**Where are e-bikes currently allowed on national forests and grasslands?**  
Class 1, 2, and 3 e-bikes are allowed on motorized trails and roads on national forests and grasslands. Additionally, several year-round resorts operating under a special use permit have established e-bike use within their permit boundary. Local Forest Service officials may consider new opportunities for e-bike use on non-motorized trails and in non-motorized areas by utilizing a designation process in accordance with the Travel Management Rule (36 CFR Part 212, Subpart B). Designators involve appropriate environmental analysis, public involvement, and local decision-making.