

Colorado Forest Service May 21, 2023
America's Great Outdoors
Aspen - Sopris
Ranger District
National Forest
White River
Use Map
Motor Vehicle
Summer

PURPOSE AND CONTENTS OF THIS MAP

The designations shown on this motor vehicle use map (MVUM) were made by the responsible official pursuant to 36 CFR 212.51, are effective as of the date on the front cover of this MVUM, and will remain in effect until superseded by next year's MVUM.

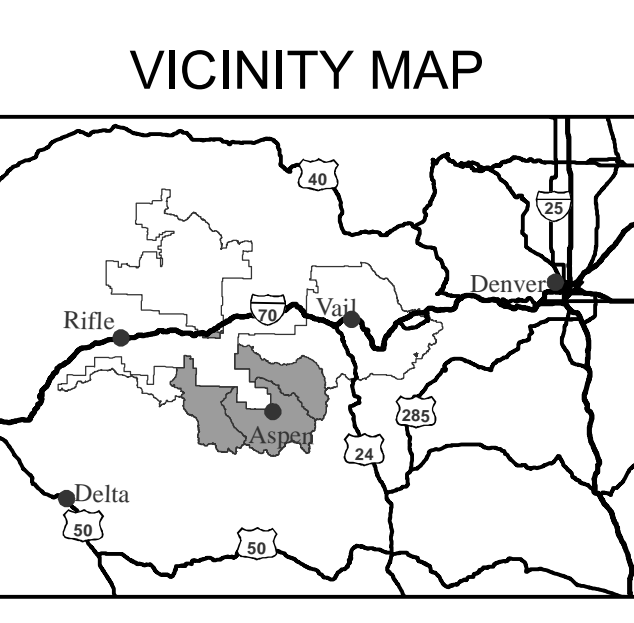
It is the responsibility of the user to acquire the current MVUM. This MVUM shows the National Forest System roads, National Forest System trails, and the areas on National Forest System lands in the White River National Forest that are designated for motor vehicle use pursuant to 36 CFR 212.51. This map also identifies the vehicle classes allowed on each route and in each area, and any seasonal restrictions that apply on those routes and in those areas.

Designation of a road, trail, or area for motor vehicle use by a particular class of vehicle under 36 CFR 212.51 should not be interpreted as encouraging or inviting use or implying that the road, trail, or area is passable, actively maintained, or safe for travel. Motor vehicle designations include parking along designated routes and at facilities associated with designated routes when it is safe to do so and when not causing damage to National Forest System resources. Seasonal weather conditions and natural events may render designated roads and trails impassable for extended periods. Designated areas may contain dangerous or impassable terrain. Many designated roads and trails may be passable only by high-clearance vehicles or four-wheel-drive vehicles. Maintenance of designated roads and trails will depend on available resources, and many may receive little maintenance.

This motor vehicle use map identifies those roads, trails, and areas designated for the motor vehicle use under 36 CFR 212.51 for the purpose of enforcing the prohibition at 36 CFR 261.13. This is a limited purpose. The other public roads are shown for information and navigation purposes only and are not subject to designation under the Forest Service travel management regulation.

These designations apply only to National Forest System roads, National Forest System trails, and areas on National Forest System lands.

Summer Motor Vehicle Use Map



INFORMATION SOURCES

White River National Forest
Supervisor's Office
P.O. Box 946
900 Grand Avenue
Glenwood Springs, CO 81602
Phone: (970) 945-2521

Aspen - Sopris Ranger District
620 Main Street
Carbondale, CO 81623
Phone: (970) 963-2266

White River National Forest
Website: www.fs.usda.gov/whiteriver
In case of emergency, Dial 911



treadlightly!
LEAVING A GOOD IMPRESSION

Travel and recreate with minimum impact. Respect the environment and the rights of others. Educate yourself plan and prepare before you go. Allow for future use of the outdoors by leaving it better than you found it. Discover the rewards of responsible recreation. For more information on Tread Lightly®, go to www.treadlightly.org or call 1-800-966-9900.

The U.S. Department of Agriculture (USDA) prohibits discrimination in all its programs and activities on the basis of race, color, national origin, age, disability and where applicable, sex, marital status, familial status, parental status, religion, sexual orientation, genetic information, political beliefs, reprisal, or because all or part of an individual's income is derived from any public assistance program. (Not all prohibited bases apply to all programs.) Persons with disabilities who require alternative means for communication of program information (Braille, large print, audiocassette, etc.) should contact USDA's TARGET Center at (202) 720-2600 (voice and TDD). To file a complaint of discrimination, write to USDA, Director, Office of Civil Rights, 1400 Independence Avenue, S.W., Washington, D.C. 20250-9410, or call (800) 795-3272 (voice) or (202) 720-6382 (TDD). USDA is an equal opportunity provider and employer.

Legend

- Roads Open to Highway Legal Vehicles
- Roads Open to All Vehicles
- Trails Open to Motorcycles Only
- Special Vehicle Designation (See Table)
- Dispersed Camping (See Table)
- Seasonal Designation (See Table)
- Interstate
- Highways, US, State
- Other Public Roads
- Other Public Trails
- Short Route Identifier
- Milepost Marker
- FS Campground
- Picnic Area
- Motorized Trailhead
- Information Site
- Peaks
- Forest or Unit Boundary
- National Forest System Lands
- Non-National Forest System Lands within the National Forest
- Wilderness Areas
- Political Boundary
- Township and Range Lines
- Section Lines
- Lakes and Rivers

EXPLANATION OF LEGEND ITEMS

Roads Open to Highway Legal Vehicles Only:
These roads are open only to motor vehicles licensed under State law for general operation on all public roads within the state.

Roads Open to All Vehicles:
These roads are open to all motor vehicles, including smaller off-highway vehicles that may not be licensed for highway use (but not all over- or overweight vehicles under State traffic law).

Trails Open to Motorcycles Only:
These trails are open only to motorcycles. Sidecars are not permitted.

Special Vehicle Designation:
This symbol indicates the road or trail is open to classes of vehicles other than those listed above. Refer to the Seasonal and Special Designation Table for further instructions.

Dispersed Camping:
This symbol is used along with a designated road or trail to indicate limited cross-country motor vehicle use within a specific distance of that route, solely for the purpose of dispersed camping. This symbol indicates where this activity is permitted. They may be on the left, right, or both sides of the route. Refer to the Dispersed Camping Table for specifics.

Seasonal Designation:
This symbol, used in conjunction with one of the other road or trail symbols, indicates that the road or trail is open only during certain portions of the year. Refer to Seasonal and Special Designation Table for further instructions.

Other Public Roads and Trails:
Interstate
Highways, U.S., State
Other Public Roads
Other Public Trails

Blanket Statements for Travel Management

Motor vehicles may be parked up to 30 feet from the edge of the road surface when it is safe to do so without causing damage to NFS resources or facilities, unless prohibited by state law, a traffic sign, or an order (36 CFR261.54).

Blanket Statement for Travel Management Effective Dates
This Motor Vehicle Use Map covers the summer season which occurs from May 21 to November 22. Please refer to the Winter Motor Vehicle Use Map for dates outside the summer season.

Dispersed Camping Table
Motor vehicle use off of designated roads for the purpose of dispersed camping is permitted for up to 300 feet from the centerline of the road (both sides of the road), where not specifically prohibited, unsafe, or causing resource damage. Motor vehicles used for dispersed camping shall be the same vehicle as the road allows and shall be the same season as the road is open. Motorized access for dispersed camping is allowed only on National Forest System land.

This applies to the following roads:
103.2, 105, 105.3A, 105.4A, 105.4F, 105.4G, 106.1B, 123.2, 129, 130.1A, 130.3A, 130.3C, 300, 300.3N, 300.3R, 300.4K, 300.4M, 302, 305.2A, 305.2B, 306, 307, 314, 315, 315.2L, 316, 317, 318, 318.1N, 321, 321.1B, 329, 400, 408, 408.3, 431.1N, 464, 502, 502.1A, 502.1B, 504, 504.1D, 504.1E, 505, 506, 506.3A, 507, 508, 508.1A, 509, 512, 512.1A, 513, 514, 518, 518.2, 519, 521, 523, 523.4A, 524, 526, 526.1A, 526.1C, 527, 532, 534, 534.2D, 534.2E, 535, 535.2A, 535.2B, 536, 536.1A, 538, 538.1M, 540, 800.

Prohibitions
It is prohibited to possess or operate a motor vehicle on National Forest System lands on the White River National Forest other than in accordance with these designations (36 CFR 261.13).

Violators of 36 CFR 261.13 are subject to a fine of up to \$5,000, imprisonment for up to 6 months, or both (18 U.S.C. 3571(a)). This prohibition applies regardless of the presence or absence of signs.

This map does not display nonmotorized uses, over-snow uses, or other facilities and attractions on the White River National Forest. Obtain forest visitor information from the local national forest office.

Designated roads, trails and areas may also be subject to temporary, emergency closures. As a visitor, you must comply with signs notifying you of such restrictions. A national forest may issue an order to close a road, trail or area on a temporary basis to protect the life, health, or safety of forest visitors or the natural or cultural resources in these areas. Such a temporary and/or emergency closure are consistent with the Travel Management Rule (36 CFR 212.52 (b)), 36 CFR 261 subpart B).

The designation 'road or trail open to all motor vehicles' does not supersede State traffic law.

Route Number	Legend	Dates Allowed	Beginning Mile Post	Ending Mile Post
103.2	Roads open to highway legal vehicles only, with Seasonal Designations	06/14-11/22	0.0	3.5
103.2	Roads open to highway legal vehicles only, with Seasonal Designations	06/21-11/22	3.5	4.9
103.2	Roads open to all Vehicles, with Seasonal Designations	06/21-11/22	4.9	8.9
105, 123.2, 315.2, 315.2L, 317, 408.3, 502, 502.1A, 502.1B, 518, 518.2, 532, 535, 535.2A, 535.2B, 536.1A, 538.1M	Roads open to all Vehicles, with Seasonal Designations	05/21-11/22	Entire Length	
105.1A, 105.1B, 105.1C, 105.1D, 105.1E, 105.1F, 105.1G, 105.1H, 105.1P, 501.1A, 511.1D, 522.1A	Roads open to highway legal vehicles only, with Seasonal Designations	05/16-11/10	Entire Length	
105.1F, 108.1, 109.1A, 511.1B, 511.1C	Roads open to highway legal vehicles only, with Seasonal Designations	05/16-09/15	Entire Length	
105.12, 105.3A, 105.4A, 105.4C, 105.4F, 105.6C, 105.6D, 111.1B, 112, 114, 120, 125.1D, 125.1E, 125.1F, 125.1G, 125.1I, 125.2E, 125.2G, 129, 300.3N, 304, 305.2A, 305.2B, 306, 311, 511, 504.1D, 504.1E, 505, 522.1B, 527, 536	Roads open to highway legal vehicles only, with Seasonal Designations	05/21-11/22	Entire Length	
106.1A, 107, 318	Roads open to highway legal vehicles only, with Seasonal Designations	05/23-09/15	Entire Length	
108.1A, 108.1B, 108.1C, 108.1D, 108.1E, 108.1F, 108.1G, 108.1H, 108.1I, 108.1J, 108.1K	Roads open to highway legal vehicles only, with Seasonal Designations	06/21-11/22	Entire Length	
111.1C	Roads open to highway legal vehicles only, with Seasonal Designations	06/13-09/15	Entire Length	
125.1A, 125.1C	Roads open to highway legal vehicles only, with Seasonal Designations	05/23-09/29	Entire Length	
125.1B	Roads open to highway legal vehicles only, with Seasonal Designations	05/23-11/22	Entire Length	
127	Roads open to highway legal vehicles only, with Seasonal Designations	05/21-11/22	0.4	0.6
130.1A, 130.3A, 130.3C	Roads open to all Vehicles, with Seasonal Designations	08/23-11/22	Entire Length	
300, 300.3R, 300.4K, 300.4M, 302, 321, 321.1B, 329, 431, 431.1N, 506, 506.2L, 507, 800	Roads open to all Vehicles, with Seasonal Designations	06/14-11/22	Entire Length	
307	Roads open to highway legal vehicles only, with Seasonal Designations	05/21-11/22	1.3	3.4

Blanket Statement for Travel Management Effective Dates
This Motor Vehicle Use Map covers the summer season which occurs from May 21 to November 22. Please refer to the Winter Motor Vehicle Use Map for dates outside the summer season.

Blanket Statement for Travel Management Effective Dates
This Motor Vehicle Use Map covers the summer season which occurs from May 21 to November 22. Please refer to the Winter Motor Vehicle Use Map for dates outside the summer season.

Dispersed Camping Table
Motor vehicle use off of designated roads for the purpose of dispersed camping is permitted for up to 300 feet from the centerline of the road (both sides of the road), where not specifically prohibited, unsafe, or causing resource damage. Motor vehicles used for dispersed camping shall be the same vehicle as the road allows and shall be the same season as the road is open. Motorized access for dispersed camping is allowed only on National Forest System land.

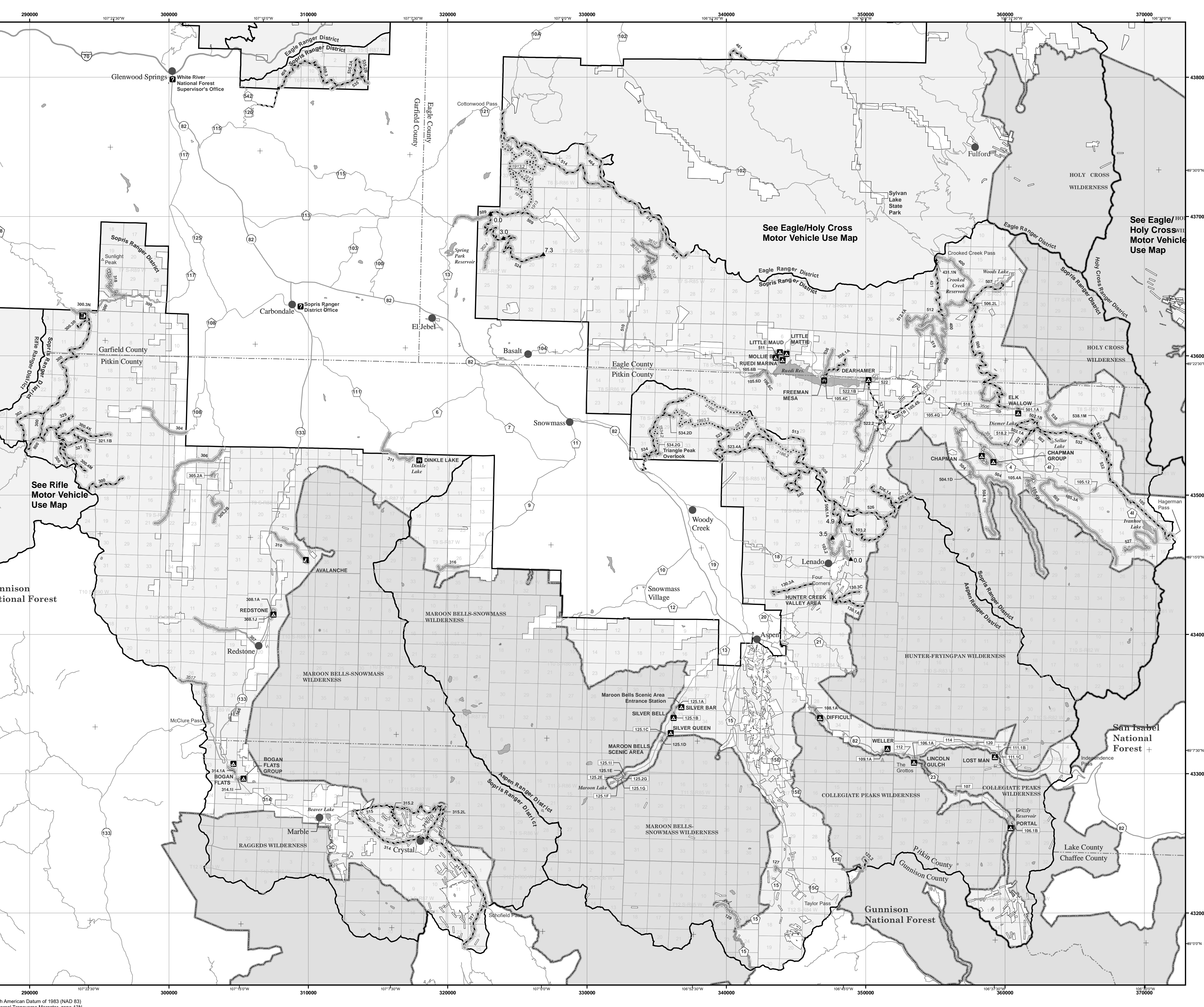
This applies to the following roads:
103.2, 105, 105.3A, 105.4A, 105.4F, 105.4G, 106.1B, 123.2, 129, 130.1A, 130.3A, 130.3C, 300, 300.3N, 300.3R, 300.4K, 300.4M, 302, 305.2A, 305.2B, 306, 307, 314, 315, 315.2L, 316, 317, 318, 318.1N, 321, 321.1B, 329, 400, 408, 408.3, 431.1N, 464, 502, 502.1A, 502.1B, 504, 504.1D, 504.1E, 505, 506, 506.3A, 507, 508, 508.1A, 509, 512, 512.1A, 513, 514, 518, 518.2, 519, 521, 523, 523.4A, 524, 526, 526.1A, 526.1C, 527, 532, 534, 534.2D, 534.2E, 535, 535.2A, 535.2B, 536, 536.1A, 538, 538.1M, 540, 800.

Maroon Bells Scenic Area
From mid-June through mid-October, motor vehicle use is restricted on the Maroon Creek Road (County Road 13) between highway 8.00 a.m. - 5.00 p.m. or when parking is not available at Maroon Lake. Please contact the Aspen-Sopris Ranger District Office or the Roaring Fork Transit Authority (RFTA) regarding the details of the restrictions and the use of public transportation to access the Maroon Bells Scenic Area.

Hunter Creek Valley Area
Between August 23 and November 22 (Big Game Hunting Season), all vehicle operators entering the Hunter Creek Valley Area are required to have in their possession a valid Colorado State hunting license for the season they are traveling in the area. Hunting season access is permitted seven days before and after the hunting license date (between August 23 and November 22). Hunters may use vehicles up to twenty feet in length.

Pitkin County Shared Authority Roads
OHV use is prohibited on the following roads:
Pitkin County and the Forest Service have entered into an agreement and both agencies have legal authorities for enforcement and administration for roads providing access to and across National Forest System lands, CR# County Road Number/ NFS# National Forest System Road Number.

Paved Roads: Maroon Creek: CR13/NFS125; Castle Creek: CR15/NFS102, 121, Coal Creek: CR30/NFS307.1, Fryling Pan: CR4/NFS105, West Sopris Creek: CR6, Capitol Creek: CR9/NFS316.1
Dirt Roads: CR14/NFS123, CR15A/NFS118, CR15B/NFS102, CR15C/NFS122.1, CR15E/NFS123, CR15G, CR15H/NFS127, CR15L/NFS102, CR18/NFS103, CR18/NFS103.2, CR108/NFS301, NFS800.3, CR11C/NFS119, NFS808.1, CR1I/NFS300.3, NFS506, CR12C/NFS505.2A, NFS130.3.3, CR21I/NFS131, CR23A/NFS106, CR3E/NFS310, CR4A/NFS400.2, CR4B/NFS501, CR4C, NFS538; 501.B, 532.1, CR4D/NFS504, CR4E/NFS504.1E, CR4F/NFS105.4A, NFS505.1, CR4H/NFS103.3A, CR4I/NFS527, CR4K/NFS506.1, CR5, CR52.2.1/NFS522.1, CR6A/NFS311.1, CR7, CR300.4K/NFS300.4K, CR526.1/NFS526.1.



Route Number	Legend	Dates Allowed	Beginning Mile Post	Ending Mile Post
308.1A, 308.1B, 308.1C, 308.1D, 308.1F, 308.1G, 308.1H, 308.1I, 308.1J, 308.1K	Roads open to highway legal vehicles only, with Seasonal Designations	05/16-10/20	Entire Length	
310	Roads open to highway legal vehicles only, with Seasonal Designations	05/21-11/22	0.1	2.4
314	Roads open to all Vehicles, with Seasonal Designations	05/21-11/22	8.1	17.3
314.1A, 314.1B, 314.1C, 314.1D, 314.1E, 314.1F, 314.1G, 314.1H, 314.1I	Roads open to highway legal vehicles only, with Seasonal Designations	05/16-10/13	Entire Length	
315	Roads open to all Vehicles, with Seasonal Designations	05/21-11/22	1.1	7.8
316	Roads open to highway legal vehicles only, with Seasonal Designations	06/14-11/22	0.5	1.7
400, 512, 512.1A, 519	Roads open to highway legal vehicles only, with Seasonal Designations	06/14-11/22	Entire Length	
464, 508, 508.1A, 513, 514, 523, 523.4A, 526, 526.1A, 526.1C, 534.2D, 534.2E, 540	Roads open to all Vehicles, with Seasonal Designations	06/21-11/22	Entire Length	
504	Roads open to highway legal vehicles only, with Seasonal Designations	05/21-11/22	0.3	10.4
509	Roads open to highway legal vehicles only, with Seasonal Designations	05/21-11/22	0.2	2.1
509	Roads open to all Vehicles, with Seasonal Designations	06/21-11/22	2.1	4.5
511	Roads open to highway legal vehicles only, with Seasonal Designations	05/16-11/22	Entire Length	
511.1A	Roads open to highway legal vehicles only, with Seasonal Designations	05/16-10/27	Entire Length	
524	Roads open to all Vehicles, with Seasonal Designations	06/01-11/22	0.0	3.0
524	Roads open to all Vehicles, with Seasonal Designations	06/21-11/22	3.0	7.3
534	Roads open to all Vehicles, with Seasonal Designations	06/21-11/22	1.1	5.9
538	Roads open to highway legal vehicles only, with Seasonal Designations	05/21-11/22	0.0	3.3
538	Roads open to all Vehicles, with Seasonal Designations	05/21-11/22	3.3	4.4

Route Number	Legend	Dates Allowed	Beginning Mile Post	Ending Mile Post
308.1A, 308.1B, 308.1C, 308.1D, 308.1F, 308.1G, 308.1H, 308.1I, 308.1J, 308.1K	Roads open to highway legal vehicles only, with Seasonal Designations	05/16-10/20	Entire Length	
310	Roads open to highway legal vehicles only, with Seasonal Designations	05/21-11/22	0.1	2.4
314	Roads open to all Vehicles, with Seasonal Designations	05/21-11/22	8.1	17.3
314.1A, 314.1B, 314.1C, 314.1D, 314.1E, 314.1F, 314.1G, 314.1H, 314.1I	Roads open to highway legal vehicles only, with Seasonal Designations	05/16-10/13	Entire Length	
315	Roads open to all Vehicles, with Seasonal Designations	05/21-11/22	1.1	7.8
316	Roads open to highway legal vehicles only, with Seasonal Designations	06/14-11/22	0.5	1.7
400, 512, 512.1A, 519	Roads open to highway legal vehicles only, with Seasonal Designations	06/14-11/22	Entire Length	
464, 508, 508.1A, 513, 514, 523, 523.4A, 526, 526.1A, 526.1C, 534.2D, 534.2E, 540	Roads open to all Vehicles, with Seasonal Designations	06/21-11/22	Entire Length	
504	Roads open to highway legal vehicles only, with Seasonal Designations	05/21-11/22	0.3	10.4
509	Roads open to highway legal vehicles only, with Seasonal Designations	05/21-11/22	0.2	2.1
509	Roads open to all Vehicles, with Seasonal Designations	06/21-11/22	2.1	4.5
511	Roads open to highway legal vehicles only, with Seasonal Designations	05/16-11/22	Entire Length	
511.1A	Roads open to highway legal vehicles only, with Seasonal Designations	05/16-10/27	Entire Length	
524	Roads open to all Vehicles, with Seasonal Designations	06/01-11/22	0.0	3.0
524	Roads open to all Vehicles, with Seasonal Designations	06/21-11/22	3.0	7.3
534	Roads open to all Vehicles, with Seasonal Designations	06/21-11/22	1.1	5.9
538	Roads open to highway legal vehicles only, with Seasonal Designations	05/21-11/22	0.0	3.3
538	Roads open to all Vehicles, with Seasonal Designations	05/21-11/22	3.3	4.4

Campground	Route Number	Legend	Dates Allowed	Beginning Mile Post	Ending Mile Post
Avalanche	All	Roads open to highway legal vehicles only, with Seasonal Designations	05/21-11/22	Entire Length	
Bogan Flats	All	Roads open to highway legal vehicles only, with Seasonal Designations	05/21-11/22	Entire Length	
Chapman	All	Roads open to highway legal vehicles only, with Seasonal Designations	05/21-11/22	Entire Length	
Dearhamer	All	Roads open to highway legal vehicles only, with Seasonal Designations	05/21-11/22	Entire Length	
Elk Wallow	All	Roads open to highway legal vehicles only, with Seasonal Designations	05/21-11/22	Entire Length	
Little Mattie	All	Roads open to highway legal vehicles only, with Seasonal Designations	05/21-11/22	Entire Length	
Difficult	All	Roads open to highway legal vehicles only, with Seasonal Designations	05/21-11/22	Entire Length	
Lincoln Gulch	All	Roads open to highway legal vehicles only, with Seasonal Designations	05/21-11/22	Entire Length	
Lostman	All	Roads open to highway legal vehicles only, with Seasonal Designations	05/21-11/22	Entire Length	
Portal	All	Roads open to highway legal vehicles only, with Seasonal Designations	05/21-11/22	Entire Length	
Redstone	All	Roads open to highway legal vehicles only, with Seasonal Designations	05/21-11/22	Entire Length	
Ruedi Marina	All	Roads open to highway legal vehicles only, with Seasonal Designations	05/21-11/22	Entire Length	
Silver Bar	All	Roads open to highway legal vehicles only, with Seasonal Designations	05/21-11/22	Entire Length	
Silver Queen	All	Roads open to highway legal vehicles only, with Seasonal Designations	05/21-11/22	Entire Length	
Silver Bell	All	Roads open to highway legal vehicles only, with Seasonal Designations	05/21-11/22	Entire Length	

Seasonal Designations - Campgrounds

Campground roads open mid to late May/early June (snow dependent) and close early October with some remaining open later. Refer to the WRNF website: www.fs.usda.gov/whiteriver/campground or call the Ranger District (970) 963-2266 for more information.

Route Number	Legend	Dates Allowed	Beginning Mile Post	Ending Mile Post
3506, 3570, 3570.2, 3517, 3518, 3522, 3524	Trails open to vehicles 62" or less in width, with Seasonal Designations	06/21-11/22	Entire Length	

Route Number	Route Designation	Dates Allowed	Length in Feet
105.12	Roads Open to Highway Legal Vehicles Only, Seasonal	05/21-11/22	685
105.4C	Roads Open to Highway Legal Vehicles Only, Seasonal	05/21-11/22	3060
106.4A	Roads Open to All Vehicles, Yearlong	01/01-12/31	1120
106.1A	Roads Open to Highway Legal Vehicles Only, Seasonal	05/23-09/15	1330
106.1B	Roads Open to Highway Legal Vehicles Only, Seasonal	06/21-11/22	780
107	Roads Open to Highway Legal Vehicles Only, Seasonal	06/21-11/22	270
109.1A	Roads Open to Highway Legal Vehicles Only, Seasonal	05/21-11/22	650
111.1B	Roads Open to Highway Legal Vehicles Only, Seasonal	05/21-11/22	210
111.1C	Roads Open to Highway Legal Vehicles Only, Seasonal	05/15-09/15	780
112	Roads Open to Highway Legal Vehicles Only, Seasonal	05/21-11/22	375
114	Roads Open to Highway Legal Vehicles Only, Seasonal		