

**Deschutes National Forest
NON-MATSUTAKE
Mushroom Harvest Map
Sisters Ranger District**



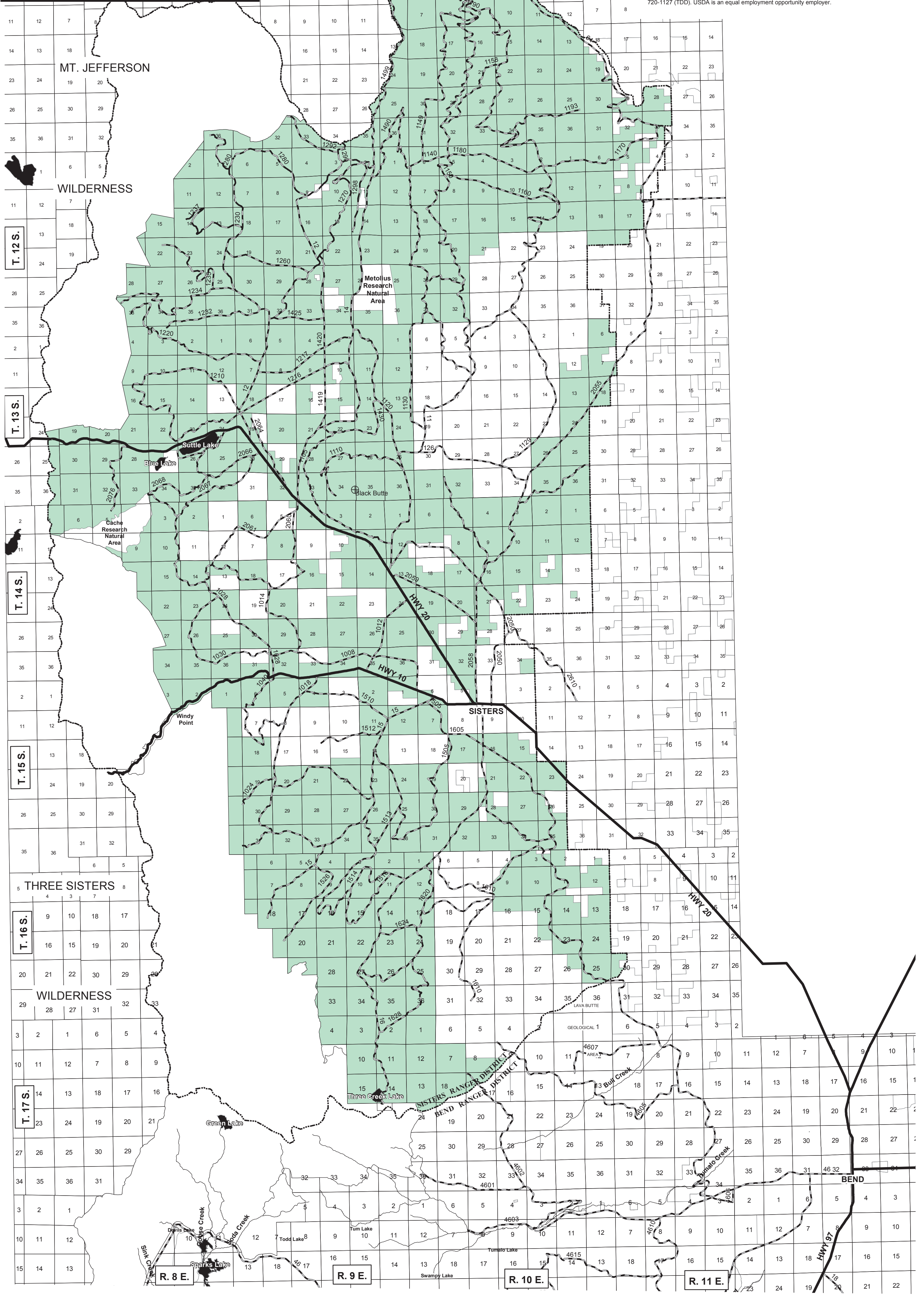
Harvest of NON-MATSUTAKE MUSHROOM SPECIES
authorized in green shaded areas only
Revised 03/04




**Matsutake harvest is
NOT ALLOWED
on the Sisters Ranger District.**

SISTERS RANGER DISTRICT
PO BOX 249
Sisters, OR 97759
(541) 549-7700

The United States Department of Agriculture (USDA) prohibits discrimination in its programs on the basis of race, color, national origin, sex, religion, age, disability, political beliefs, and marital or familial status. (Not all prohibited bases apply to all programs.) Persons with disabilities who require alternative means of communication of program information (Braille, large print, audiotape, etc.) should contact the USDA Office of Communications at (202) 720-2791.

To file a complaint, write the Secretary of Agriculture, U.S. Department of Agriculture, Washington, DC 20250, or call (202) 720-7327 (voice) or (202) 720-1127 (TDD). USDA is an equal employment opportunity employer.



-  Forest Road (may only be suitable for high-clearance vehicles)
-  Mushroom Harvest Area
-  National Forest Boundary

