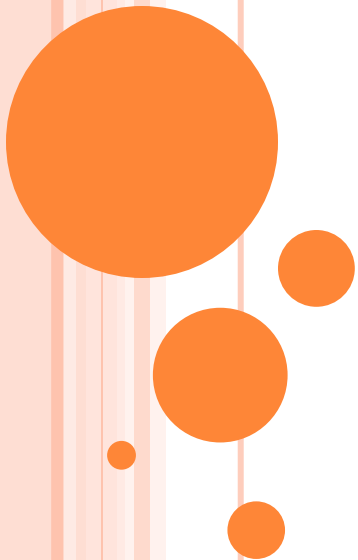


KRAUSE BASIN RECREATION COLLABORATION

Meeting 3

April 13, 2022

Focus: Trail Use Alternatives



GROUND RULES

- Meeting is being recorded
- Raise your hand to ask a question
- Keep comments concise and to the point that we're talking about
- Don't dominate speaking, so all can participate
- Be respectful of others' viewpoints

Virtual:

- Mute yourselves unless you are speaking
- Raise your hand to ask a question or use the chat box



ANNOUNCEMENTS

- Boundary clearing for survey with state land
 - Need to clarify which trails are on which land
 - This summer or next
- Illegal to clear trail without a permit from USFS

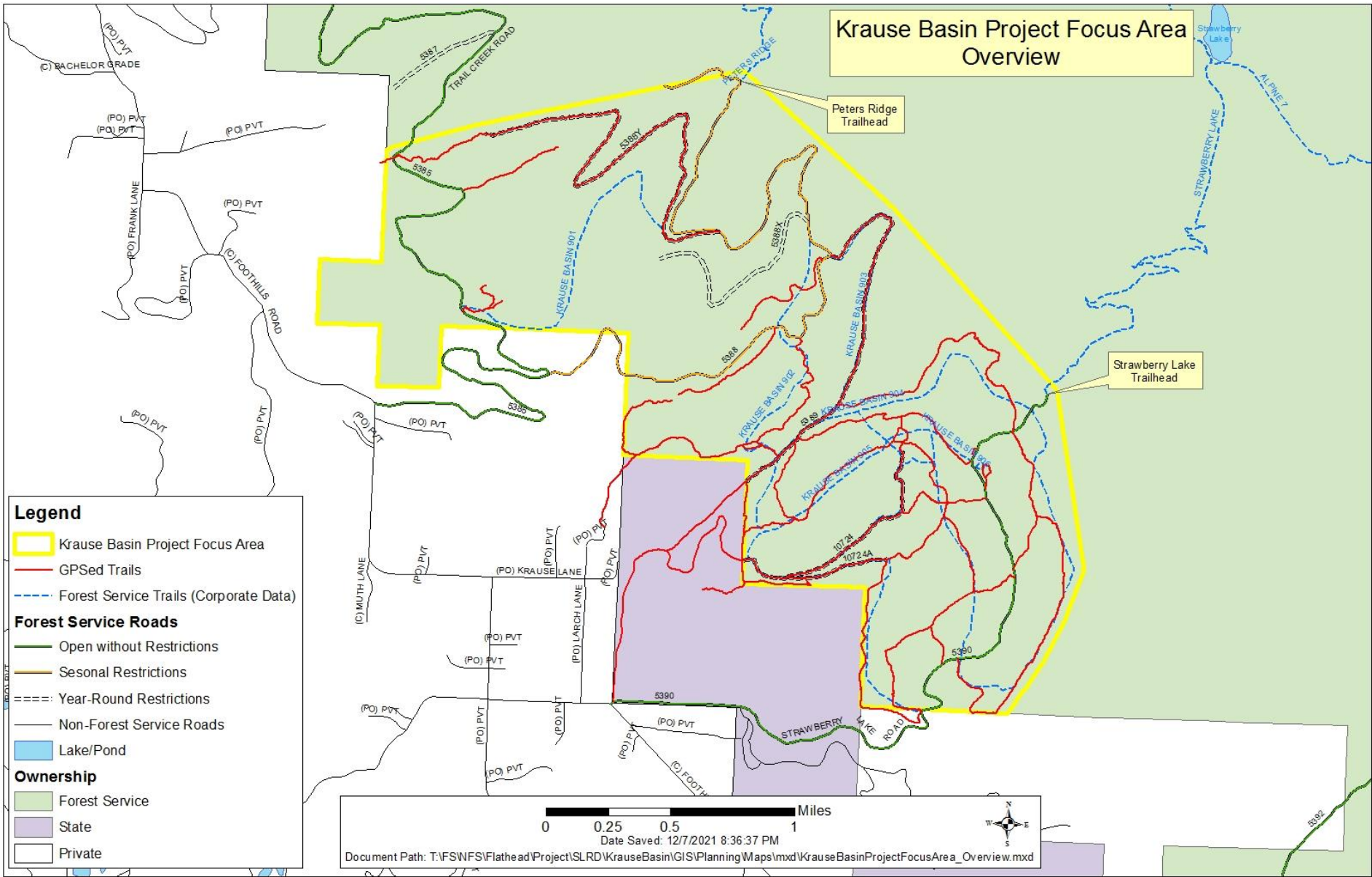


CURRENT STATUS OF TRAILS

- Krause Basin designated as Management Area 7: Focused Recreation
- 13 miles of designated (on map) trails open to all users
 - Open to motorized use July 1 – August 31
 - Not marked on the ground
- ½ mile *designated* nonmotorized trail



Krause Basin Project Focus Area Overview



Legend

- Krause Basin Project Focus Area
 - GPSed Trails
 - Forest Service Trails (Corporate Data)
- Forest Service Roads**
- Open without Restrictions
 - Seasonal Restrictions
 - Year-Round Restrictions
 - Non-Forest Service Roads
- Ownership**
- Forest Service
 - State
 - Private

Miles
 0 0.25 0.5 1

Date Saved: 12/7/2021 8:36:37 PM

Document Path: T:\FS\NFS\Flathead\Project\SLRD\KrauseBasin\GIS\Planning\Maps\mxd\KrauseBasinProjectFocusArea_a_Overview.mxd

TALKING POINTS COLLABORATIVE MAPPING TOOL

- Easy and intuitive
- Allows you to make comments about specific locations on the landscape
- You will be sent a link to use the tool, with directions
- Brief overview



TIMELINE (FLEXIBLE)

Meetings and field trips

- 1: Introduction to Process (Dec 16, 2021)
- 2: Trail designation 1 (February 16)
- 3: Trail designation 2 (**Today**)
- 4: Trail designation field trip (**mid-late May**)
- 5: Trail signage (**July**)
- 6: Trailhead assessment field trip (**August**)
- 7: Final Recommendations meeting (**Sept**)

Provide recommendations to USFS **October 1, 2022**



NEXT MEETING – FIELD TRIP!

Survey to determine

- Date and Time?
- Where should we go?
- Do we need to carpool?



TAKEAWAYS FROM LAST GROUP EXERCISE

- Contingent that wants no motorized (concerns: noise, resource damage, wildlife)
- Contingent that wants to keep the area open for all users
- Conflicts between fast users (motorized/bikes) and slow users (hikers/horseback)
- Need improved trail etiquette
- Need improved signs/maps, trailheads (trailers)
- More use, which needs more management/enforcement
- Do not want to promote area



TWO IDENTIFIED ALTERNATIVES TO THIS POINT

- No Action: keep current status with 13 miles of trail available for all users
- Hike/Horseback: no motorized use on existing trails (bikes separate?)
- Is there interest in a third alternative?



BREAKOUT EXERCISE

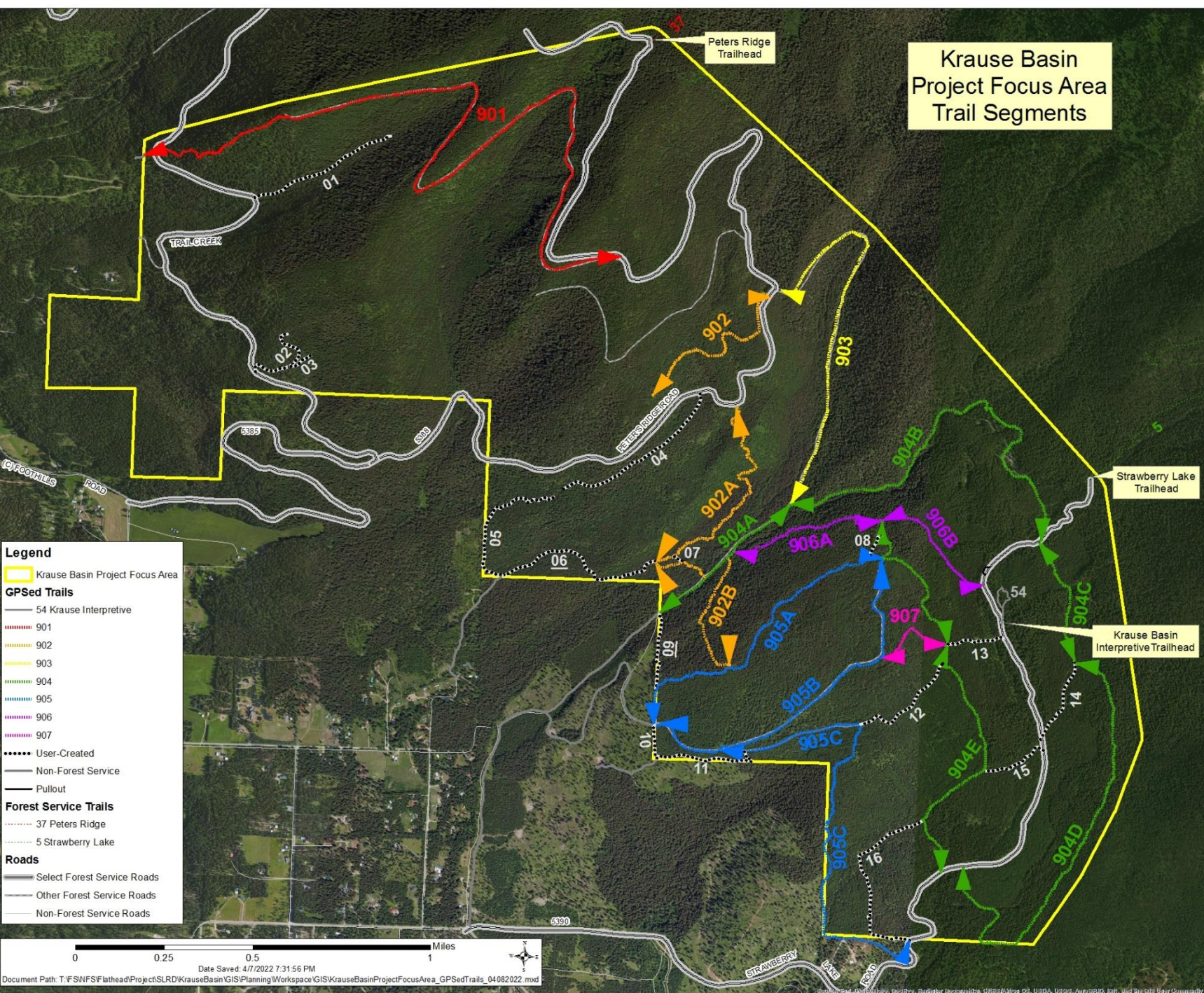
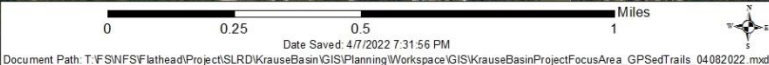
Randomly assigned to a breakout group

- Goal: Design an alternative where all users get at least part of what they want
- Need volunteer to record final outcome
- Use the maps provided
- Focus on numbered trails



Krause Basin Project Focus Area Trail Segments

- Legend**
- Krause Basin Project Focus Area
 - GPSed Trails**
 - 54 Krause Interpretive
 - 901
 - 902
 - 903
 - 904
 - 905
 - 906
 - 907
 - User-Created
 - Non-Forest Service
 - Pullout
 - Forest Service Trails**
 - 37 Peters Ridge
 - 5 Strawberry Lake
 - Roads**
 - Select Forest Service Roads
 - Other Forest Service Roads
 - Non-Forest Service Roads



THINGS TO CONSIDER

- Where and how do trails enter Krause Basin?
 - State land does not allow motorized, do allow bikes
 - Trails entering from north do allow motorized
 - Trail 37, Peter's Ridge, is open 07/01 to 03/31,
- Trails 901-907 are open 07/01 to 08/31 to vehicles less than 50" in width.
- Trails can be split
- Appropriate uses given current width and gradients
- Location of current trailheads



Krause Basin Project Focus Area Trail Segments

- Legend**
- Krause Basin Project Focus Area
 - GPSed Trails**
 - 54 Krause Interpretive
 - 901
 - 902
 - 903
 - 904
 - 905
 - 906
 - 907
 - User-Created
 - Non-Forest Service
 - Pullout
 - Forest Service Trails**
 - 37 Peters Ridge
 - 5 Strawberry Lake
 - Roads**
 - Select Forest Service Roads
 - Other Forest Service Roads
 - Non-Forest Service Roads

