



Mt. Hood National Forest

October 2023

The Mt. Hood National Forest has waived permit requirements to collect minor amounts of mushrooms, berries, cuttings, and transplants for personal use only.

- Forest products obtained under “incidental use” are for personal use only and cannot be sold or exchanged.
- **Commercial Permits** are required to sell forest products, call your local District office for details and availability.
- Allowable quantities per person (18 years or older), per year (January through December):
 - **Mushrooms – 1 gallon/day, up to 10 gallons (1 gal.=approximately 5 pounds).**
 - **Berries – 3 gallons.**
 - **15 transplants under 2 feet tall.**
 - **Up to 20 pounds of cut greenery.**
- **Transplants and cut greenery** allowable species for harvest **within the road prism** of open roads include ferns, vine maple, huckleberry, rhododendron, salal, Oregon grape, manzanita, and tree seedlings less than 2 feet tall.
- **Motorized vehicles** are not allowed off existing roads open to the public for motorized vehicle use, parking shall not block traffic, gates or impede emergency vehicle access. Harvesting along State highways is not allowed. **Motor Vehicle Use Maps are available for free** at <https://www.fs.usda.gov/main/mthood/maps-pubs>
- Be safe, inform someone where you are headed and when expected back. Cell phone service is limited.
- Be prepared. Bring fuel, food, and water. Check weather and road conditions, know before you go.
- Pack it in, pack it out! Pack out litter, do not cause damage to infrastructure, road system or watershed.

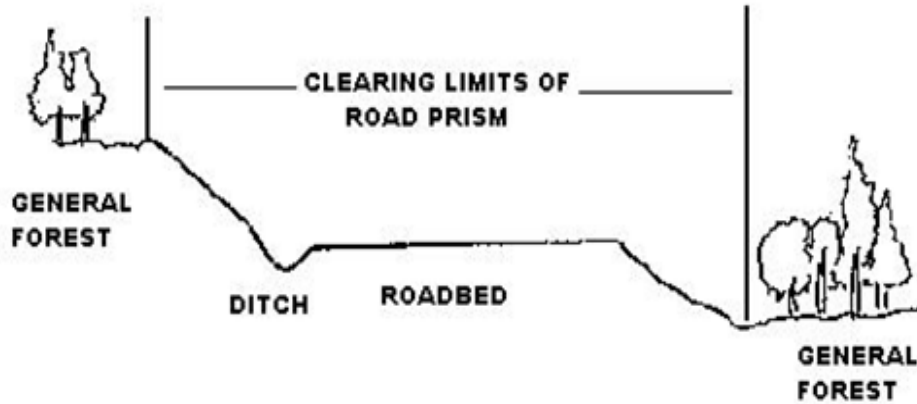
Protection of Sensitive Resource Areas:

- Harvest shall occur only in areas designated for incidental or free use. Digging for truffles is not allowed.
- Harvest of any sensitive/protected species is prohibited. Ensure you know what species you are collecting.
- Collection is prohibited in municipal watersheds and within riparian areas, streams (Class 1 thru 4), ponds, reservoirs, lakes, or wetlands unless the product occurs within a road prism open to motor vehicle use.
- No harvesting within designated wilderness areas, recreation areas, administrative sites, Camp Baldwin, research natural areas, Tilly Jane Proposed Wilderness or areas otherwise closed to entry.
- Persons availing themselves of this privilege on National Forest Lands are expected to exercise reasonable care in protecting the resource from damage. Please forage carefully!

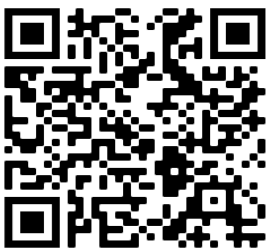
Mt. Hood Mushroom Map and District Mushroom Maps:

- Available in print at office kiosks and online. Please call your local Ranger Station to receive by mail.
- **Fire-impacted burned areas:** harvesting is allowed within the usual harvest area as shown on the Mt. Hood National Forest Mushroom Map or District Mushroom Maps, in compliance with MT HOOD ORDER NO. 06-06-00-23-01 Health and Safety Closure Due to Roadside Danger Trees, Exemption #3 “Persons using the road without a motorized vehicle (i.e., on foot, horseback, or nonmotorized bicycle)” [36 CFR § 261.50(e)]. Please visit our website: <https://www.fs.usda.gov/main/mthood/passes-permits/forestproducts>

Diagram of Road Prism



Mt. Hood National Forest Free Use Mushroom Maps



Barlow

Ranger District
Mushroom Map

Barlow Ranger District
780 NE Court
Dufur, OR 97021
541-467-2291



Clackamas River

Ranger District
Mushroom Map

Clackamas River
Ranger District
16400 Champion Way
Sandy, OR 97055
971-333-4100



Hood River

Ranger District
Mushroom Map

Hood River
Ranger District
6780 Highway 35
Mt. Hood, OR 97041
541-352-6002



Zigzag

Ranger District
Mushroom Map

Zigzag Ranger District
70220 East Highway 26
Zigzag, OR 97049
503-622-3191