



KRAUSE BASIN RECREATION COLLABORATION

Meeting 2

February 16, 2022

**Focus: Identify Trail Issues and
Potential Remedies**

GROUND RULES

- Meeting is being recorded
- Mute yourselves unless you are speaking
- Two ways to ask a question or respond to a question:
 - Use the chat box
 - Raise your hand
- Keep comments concise and to the point that we're talking about
- Balance airtime so all can participate
- Be respectful of others' viewpoints



STARTING POINT

Currently:

- Krause Basin designated as Management Area 7: Focused Recreation
- 13 miles of designated (on map) motorized trails
 - Open to motorized use July 2 – September 1
 - Not marked on the ground
 - Non-motorized users can use as well
- ½ mile *designated* nonmotorized trail
- Number of user-created trails
- No commercial recreation activities



PROBLEMS TO SOLVE

- Trail designation (Non-snow-covered periods)
 - Evaluate all existing trails
 - Which trails for which use (motorized, non-motorized)
 - Trail signage: route markers, “Open to”
 - Rehab non-designated, user-created trails
- Trailhead(s) assessment
 - Location
 - Signage, maps, etc.
 - Parking
 - Improvements based on anticipated use (toilets?)
 - Strawberry Lake Trailhead considerations



QUESTIONS TO BE ANSWERED

- Where should designated trails be located?
 - Select from current trails?
 - Do sections need to be relocated?
- What kinds of uses should be allowed on those trails?
- How should those trails be signed?
- What to do with other unauthorized trails?
- Where should trailheads be located?
- What improvements should be made at trailheads?

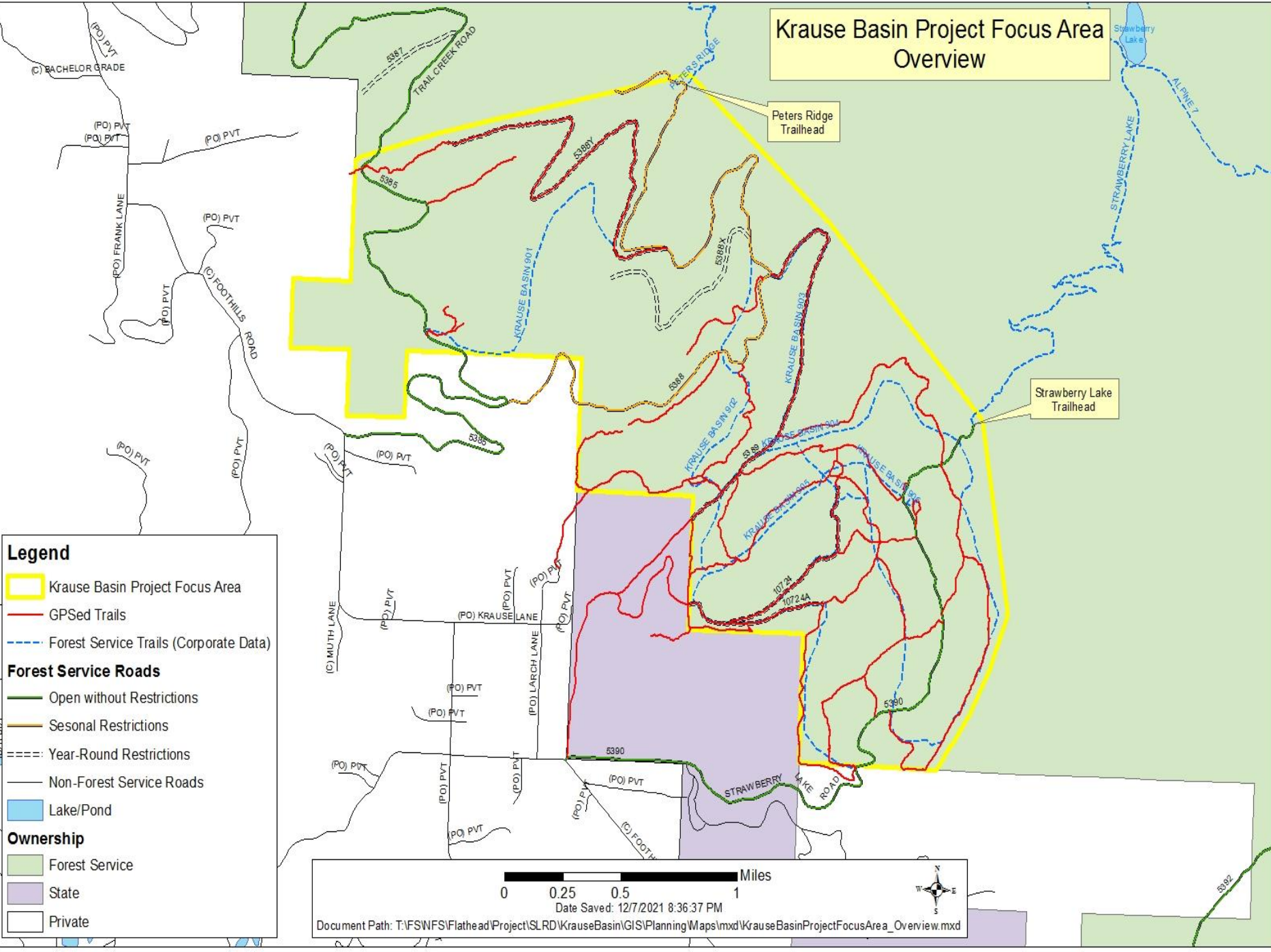


POTENTIAL FRAMEWORK FOR TRAIL DESIGNATION

- Identify current use issues (how: breakout groups, poll questions)
- Identify potential remedies and their shortcomings (start today)
- Determine range of alternatives
- Identify trails that meet those alternatives



Krause Basin Project Focus Area Overview



Legend

- Krause Basin Project Focus Area
- GPSed Trails
- Forest Service Trails (Corporate Data)

Forest Service Roads

- Open without Restrictions
- Seasonal Restrictions
- Year-Round Restrictions
- Non-Forest Service Roads

Ownership

- Forest Service
- State
- Private

Miles
 0 0.25 0.5 1

Date Saved: 12/7/2021 8:36:37 PM

Document Path: T:\FWS\F\Flathead\Project\SLRD\KrauseBasin\GIS\Planning Maps\mxd\KrauseBasinProjectFocusArea_Overview.mxd

BREAKOUT EXERCISE

- Randomly assigned to a breakout group
 - Need volunteer to take simple notes and make list of responses
 - Introduce yourself
 - What is the most important recreation issue as each person sees it?
- Each group will report out
- We'll capture and summarize current issues



POLL QUESTIONS



DAVE GRANLUND © www.davegranlund.com



TIMELINE (FLEXIBLE)

Meetings and field trips

- 1: Introduction to Process (Dec 16, 2021)
- 2: Trail designation 1 (Today)
- 3: Trail designation 2 (early April)
- 4: Trail designation field trip (late May)
- 5: Trail signage (July)
- 6: Trailhead assessment field trip (August)
- 7: Final Recommendations meeting (Sept)

Provide recommendations to USFS **October 1, 2022**



TALKING POINTS COLLABORATIVE MAPPING TOOL

- Easy and intuitive
- Allows you to make comments about specific locations on the landscape
- You will be sent a link to use the tool, with directions
- Brief overview



NEXT MEETING

- Late March/early April
- In-person/hybrid?
- Longer?
- Summarize mapping tool feedback

