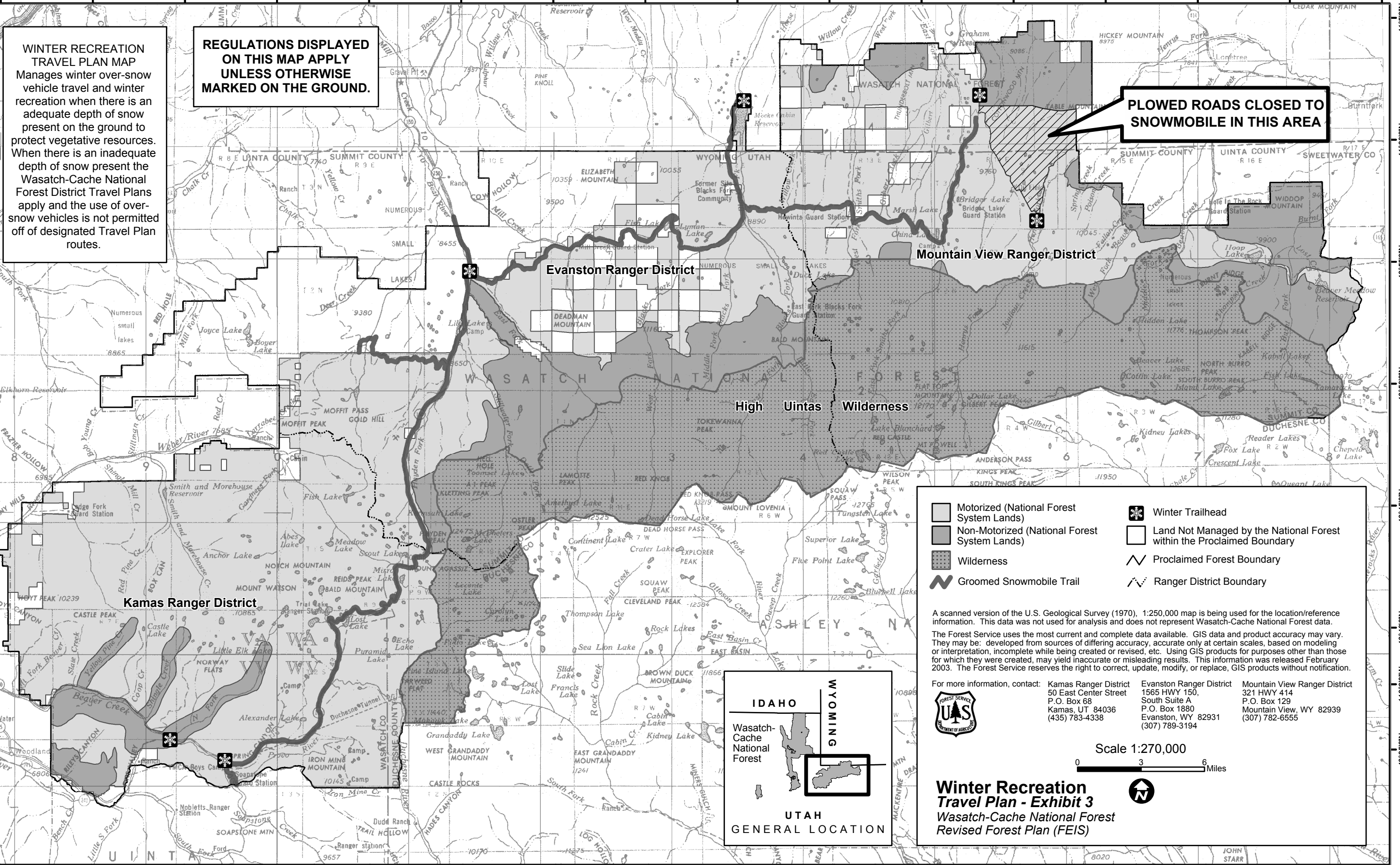


111°15'0"W 111°10'0"W 111°5'0"W 111°0'0"W 110°55'0"W 110°50'0"W 110°45'0"W 110°40'0"W 110°35'0"W 110°30'0"W 110°25'0"W 110°20'0"W 110°15'0"W 110°10'0"W 110°5'0"W 110°0'0"W



WINTER RECREATION TRAVEL PLAN MAP
 Manages winter over-snow vehicle travel and winter recreation when there is an adequate depth of snow present on the ground to protect vegetative resources. When there is an inadequate depth of snow present the Wasatch-Cache National Forest District Travel Plans apply and the use of over-snow vehicles is not permitted off of designated Travel Plan routes.

REGULATIONS DISPLAYED ON THIS MAP APPLY UNLESS OTHERWISE MARKED ON THE GROUND.

PLOWED ROADS CLOSED TO SNOWMOBILE IN THIS AREA

Kamas Ranger District
Evanston Ranger District
Mountain View Ranger District

High Uintas Wilderness

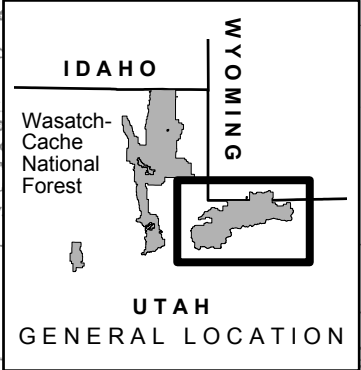
WASATCH NATIONAL FOREST

- Motorized (National Forest System Lands)
- Non-Motorized (National Forest System Lands)
- Wilderness
- Groomed Snowmobile Trail
- Winter Trailhead
- Land Not Managed by the National Forest within the Proclaimed Boundary
- Proclaimed Forest Boundary
- Ranger District Boundary

A scanned version of the U.S. Geological Survey (1970), 1:250,000 map is being used for the location/reference information. This data was not used for analysis and does not represent Wasatch-Cache National Forest data. The Forest Service uses the most current and complete data available. GIS data and product accuracy may vary. They may be: developed from sources of differing accuracy, accurate only at certain scales, based on modeling or interpretation, incomplete while being created or revised, etc. Using GIS products for purposes other than those for which they were created, may yield inaccurate or misleading results. This information was released February 2003. The Forest Service reserves the right to correct, update, modify, or replace, GIS products without notification.

For more information, contact:

	Kamas Ranger District 50 East Center Street P.O. Box 68 Kamas, UT 84036 (435) 783-4338	Evanston Ranger District 1565 HWY 150, South Suite A P.O. Box 1880 Evanston, WY 82931 (307) 789-3194	Mountain View Ranger District 321 HWY 414 P.O. Box 129 Mountain View, WY 82939 (307) 782-6555
--	---	--	--



Scale 1:270,000
 0 3 6 Miles

Winter Recreation Travel Plan - Exhibit 3
Wasatch-Cache National Forest
Revised Forest Plan (FEIS)

111°15'0"W 111°10'0"W 111°5'0"W 111°0'0"W 110°55'0"W 110°50'0"W 110°45'0"W 110°40'0"W 110°35'0"W 110°30'0"W 110°25'0"W 110°20'0"W 110°15'0"W 110°10'0"W 110°5'0"W 110°0'0"W

UNITED STATES DEPARTMENT OF AGRICULTURE FOREST SERVICE
WASATCH-CACHE NATIONAL FOREST
SPECIAL ORDER

PROHIBITIONS

Pursuant to Title 36 Code of Federal Regulations (CFR) 261.50 (a), and (b) the following acts are prohibited in the areas described in this Order, and on National Forest System roads, trails and areas as described below within the Wasatch-Cache National Forest.

1. Using any type of vehicle on a forest system road where such use has been restricted or prohibited on the WINTER RECREATION TRAVEL MAP portion of the Order (36 CFR 261.54(a)).
2. Using any type of vehicle on a forest system trail where such use has been restricted or prohibited on the WINTER RECREATION TRAVEL MAP portion of the Order (36 CFR 261.55(b)).
3. Using any type of vehicle on a forest system road which is in violation of Utah State Law, to wit; Title 41 of Utah Criminal and Traffic Code (36 CFR 261.54 (a)).
4. Using any type of vehicle on a forest system road/trail/area which is in violation of Wyoming State Law, to wit; Title 31 of the Wyoming Criminal and Traffic Code (36 CFR 261.54 (a)).
5. Using or possessing a vehicle off existing and established forest system roads/trails where such use has been restricted or prohibited on the WINTER TRAVEL MAP portion of the Order (36 CFR 261.56).
6. Using any type of vehicle on roads unless such use is allowed by official posted signs on the ground or as shown on the WINTER TRAVEL MAP portion of the Order (36 CFR 261.54(a)).

EXEMPTIONS

Pursuant to 36 CFR 261.50(e), the following persons are exempt from this order:

1. Persons with a permit specifically authorizing them from the effect of this Order.
2. Persons commissioned by the Forest Service and engaged in the execution of a contract in the area, or road, or trail that is closed.
3. Any Federal, State, or local officer, or member of an organized rescue or fire fighting force in the performance of an official duty.

WILDERNESS REGULATION

Possessing or using a motor vehicle, motor boat, motorized equipment except as authorized by Federal law or regulation; possessing or using a hang glider or bicycle; landing of aircraft, or dropping or picking up of any material, supplies, or person by means of aircraft, including helicopter in wilderness areas is prohibited under 36 CFR 261.18 (16 USC 551).

AREA DESCRIBED

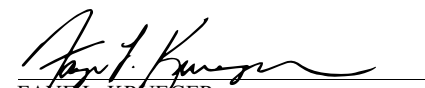
All National Forest System Lands located within the boundaries of the Wasatch-Cache National Forest as it relates to open, restricted, or closed areas, roads, and trails as designated and/or shown on the Wasatch-Cache National WINTER RECREATION TRAVEL MAP.

EXHIBITS AND IMPLEMENTATION

1. Exhibit 1 - Salt Lake Ranger District Winter Recreation Travel Map, Exhibit 2 - Ogden/Logan Ranger District Winter Recreation Travel Map, Exhibit 3- Kamas and Evanston/Mt. View Ranger Districts Winter Recreation Travel Map.
2. This closure is for protection of soil, vegetation, wildlife, and other resources of the Wasatch-Cache National Forest.
3. Violation of these prohibitions is punishable by a fine of not more than \$5,000.00 for an individual, or \$10,000 for an organization, and/or imprisonment for not more than six (6) months. [Title 16 USC 551, Title 18 USC 3571(b)(6), and Title 18 USC 3581(b) (7)].
4. This Order will be in effect when signed and shall remain in effect until further notice.

Restrictions and closures established by this Winter Recreation Travel Map supersede all previous editions of Wasatch-Cache National Forest Travel maps for Winter Recreation.

Done at Salt Lake City, Utah this 15th day of December, 2005


FAYE L. KRUEGER
Forest Supervisor
Order Number 04-19-147

REFER TO TITLE 36 CFR 261 FOR ADDITIONAL REGULATIONS CONCERNING USE OF NATIONAL FOREST LANDS.

DEFINITIONS

RESOURCE DAMAGE - includes, but is not limited to "rutting of roads, trails or other surfaces by any type of vehicle during wet or muddy conditions, damaging any type of fish or wildlife habitat, or harassing any wildlife."

OFF-HIGHWAY VEHICLE (OHV) - Any motorized vehicle designed for or capable of cross-country travel on or immediately over land, water, snow, sand, ice, marsh, swampland, or other terrain, which would include, but not be limited to such vehicles as four-wheel-drive, motorcycles, snowmobiles, amphibians, and air cushion vehicles.

OVER-SNOW VEHICLE (OSV) - A self propelled vehicle intended for travel primarily on snow, having a curb weight of not more than 1,000 pounds, driven by a track or tracks in contact with the snow, and steered by a ski or skis in contact with the snow.

SNOWMOBILE ACCESS ROUTE - A designated travel route to provide motorized access through non-motorized managed Forest Service system lands for over-snow vehicles. (These routes may be groomed.)

FOR INFORMATION REGARDING TRAVEL REGULATIONS ON ROADS/TRAILS/AREAS OUTSIDE THE WASATCH-CACHE NATIONAL FOREST'S JURISDICTION, CONTACT THE APPROPRIATE FEDERAL, STATE, COUNTY, COMMUNITY OFFICE, OR PRIVATE PROPERTY OWNER.



WINTER RECREATION TRAVEL MAP

Evanston/Mt. View and Kamas Ranger Districts

WASATCH-CACHE National Forest



This map describes winter travel opportunities from the beginning of the snow season in the FALL/WINTER when local conditions prevent travel on designated roads and trails by wheeled vehicles UNTIL THE TIME IN THE SPRING when local conditions become suitable to support wheeled vehicle traffic on designated roads and trails without causing resource damage. Closures for coming years may differ based on changing conditions.

Additional closures or restrictions may be made at any time for resource protection or public safety. To avoid inconvenience, Forest visitors are encouraged to contact local District Ranger offices for current travel information.

Winter Recreation Rules to Play By

1. **Play nice. Respect the rights of all forest visitors to enjoy the beauty of the winter wonderland. Good manners and a friendly attitude will promote a safe and enjoyable experience for everyone.**
2. **Tread Lightly and Leave No Trace. Pack out everything you pack in and do not litter. Bury human waste away from trails and water.**
3. **Plan ahead and prepare. Know the ability levels of your party; check on current weather, avalanche, and trail conditions; and choose your routes accordingly and let some know your route or destination.**
4. **Park considerately at trailheads. Don't use any more space than you need or block roads and trails.**
5. **Protect your image. Snowmobilers, please limit your time in parking lots, avoid horse play and excessive speed in congested areas, and limit vehicle noise.**
6. **Respect private property, designated wilderness areas, trail use signs, established ski tracks, and area closures.**
7. **Travel in control. On the trail, slow down and use caution when approaching others. Keep to the right and pass others slowly. Yield the right-of-way to traffic moving downhill.**
8. **Don't block the trail. Move out of the way to take a break, sightsee, or talk.**
9. **Help keep groomed ski trails in good condition. Snowshoers, skate skiers, pet owners, and hikers should avoid traveling on groomed ski tracks.**
10. **Respect wildlife. Stress caused by human encounters can reduce an animal's ability to survive the winter. Do not travel in areas that are closed for wildlife protection.**

Know Before You Go... Check backcountry avalanche and weather conditions before you leave.

Call 24 hour a day for Avalanche & Mountain Weather Information Centers:
Uinta Mountains & Wasatch Plateau 1-800-648-7433, Salt Lake Area (801) 364-1581, Logan Area (435) 797-4146,
Ogden Area (801) 626-8600, or see www.avalanche.org and select icons in Utah.

Trail Grooming Information... Trails are groomed by Utah State Parks and Recreation and the Forest Service. For grooming condition updates Call 1-800 - OHV - RIDE or check www.snowut.com

For more information contact: Web site: www.fs.fed.us/wcnf

Public Lands Information Center
Located in REI
3285 East 3300 South
Salt Lake City, UT 84109
(801) 466-6411

Evanston Ranger District
1565 HWY 150 South, Suite A
P.O. Box 1880
Evanston, WY 82931-1880
(307) 789-3194

Mountain View Ranger District
321 HWY 414
P.O. Box 129
Mountain View, WY 82939
(307) 782-6555

Kamas Ranger District
50 East Center Street
P.O. Box 68
Kamas, UT 84036
(435) 783-4338

Wasatch-Cache National Forest

8236 Federal Building - 125 South State Street - Salt Lake City, UT 84138
(801) 524-3900