



Robbs Hut

Eldorado National Forest

Pacific Ranger District



Robbs Hut is a backcountry cabin located on Robbs Peak near Union Valley Reservoir in the Crystal Basin. At an elevation of 6686 feet, the Hut has a spectacular view of the Crystal Range in the Desolation Wilderness as well as the Sacramento Valley. Robbs Hut shares the mountaintop with Robbs Peak Lookout which was staffed by the Forest Service to spot forest fires from 1934 through 1978. Robbs Peak Lookout continues to be used for fire detection during emergencies and is open to the public for day use during the summer. **Use of the lookout is not included with Hut rental.** Popular activities include mountain biking, cross-country skiing and snowshoeing.

Amenities

Robbs Hut offers the most primitive cabin experience of all our cabins on the Eldorado. The hut is a basic two room building with the small kitchen and storage area on one side and the living and sleeping area in the larger room.

Parking: Vehicle access in summer only. Limited parking available at the trailhead in winter.

Sleeping: Three sleeping platforms with mattresses (3/4 width).

Heat & Lights: Propane fireplace with thermostat. Propane lights. **No electricity.**

Cooking: Apartment sized propane oven with four burner cook top. Some dishes, pots, and pans.

Water: Bring water with you.

Outdoor equipment: fire ring, two picnic tables, and a separate vault toilet building.

Location and Access

The Hut offers extremely different recreational experiences between summer and winter use.

Summer Season directions (July through September) - During the summer, most passenger vehicles can access the hut on the dirt road. To reach Robbs Hut:

- Highway 50 east 21 miles from Placerville (8.5 miles east of Pollock Pines). Left on Ice House Road north 23 miles. Turn left on Robbs Peak road (13N31). Go 2 miles on dirt road and turn right at the fork. Travel 2/3 of a mile to the locked gate (access provided at check-in), and continue 1/3 mile to hut.

Due to the remoteness of this area, you should be alert to changeable weather, road and trail conditions.

Winter Season directions (October through June)- When snow covers the Sierra, the Hut can only be accessed by a 3 mile long ski/snowshoe/hike uphill trek into the backcountry marked by blue diamonds. To reach Robbs trailhead:

- Highway 50 east 21 miles from Placerville (8.5 miles east of Pollock Pines). Left on Ice House Road north 23 miles to the Robbs Peak road (13N31) intersection. A plowed area is available for parking. Do not obstruct traffic or snow plows on Ice House road.
- Roads are often icy and snow plowing is done on an intermittent basis by the Sacramento Municipal Utility District (SMUD). Ice House Road may not be plowed on weekends or holidays.
- Because of the unpredictable weather and road conditions, there is no guaranteed access to Robbs Hut. Robbs Peak Road is normally gated and locked at Ice House Road during the wet season, even when there is no snow. These conditions will require renters to hike three miles from their vehicle to the Hut.

Road and Trail Conditions

Winter drastically changes the complexion of the Sierra Nevada and the Crystal Basin is no exception. Snow depths from a single storm can exceed two feet. Breaking trail on skis or snowshoes in deep snow conditions can be exhausting and roads can become impassable to all vehicles including 4WD. Be prepared to postpone your trip in the event of a storm rather than subject your group to unnecessary risk.

Important

Renters must contact the **PLACERVILLE Ranger District at (530) 644-2324** to arrange for the permit and access. Check on current conditions before you leave the house.

USDA is an equal opportunity provider and employer.

Check-In

Renters must contact the **PLACERVILLE Ranger Station** (530) 644-2324 **as far in advance as possible** to arrange for check-in, access, and to receive a current condition report. Permits must be picked up in person. Failure to do so will result in a cancellation of your reservation.

Placerville Ranger Station
4260 Eight Mile Road
Camino Ca. 95709
8:00 am to 4:30 pm
Call for schedule.

DIRECTIONS: Travel 8 miles east of Placerville on Highway 50 and take exit 54 (Cedar Grove). Turn right on Eight Mile Road, then another immediate right to the Ranger Station.

Know Before You Go

- ◆ **Winter use is recommended for experienced backcountry users only.** This trip is recommended for intermediate ability level or better skiers/snowshoers in excellent physical condition who are skilled in winter backcountry survival including navigation by map and compass or GPS. The party must be prepared to bivouac overnight in the snow in the event of emergency. Skiers will need climbing skins.
- ◆ **Depending on terrain conditions, the trip can take between 2 to 6 hours from trailhead to bunkhouse.** Elevation gain is 1,000 feet in 3 miles. Depart from the trailhead no later than noon.
- ◆ **Pets** are not allowed in the building and are best left at home.
- ◆ **No open flames**, candles, backpacking stoves or Coleman stoves, etc., are permitted inside the building.
- ◆ The **propane fireplace** is operated entirely from a wall thermostat above the couch. Turn the switch on the bottom to "on." Set the desired temperature on the top. Be sure to turn the switch on the bottom to "off" when you leave. Pilot lights should be left lighted for the next guests.
- ◆ **Cleaning:** In backcountry facilities, renters are expected to clean up after themselves and prepare the hut for the next group. Cleaning supplies are available. Snow shovels are provided to clear the deck and entryways of snow.
- ◆ **Remove food & garbage when you leave:** Be sure to take all remaining **food** with you when you leave, even unopened items. Boxes and packages of food attract mice. Cans of food will freeze, causing the seams to unseal and the contents to spoil.

Route Finding

Even though the roads and the trail to Robbs Hut may be signed these should not be relied upon by travelers in this remote backcountry area. Natural events and storms can remove or obliterate signs and trail markers. You are responsible for finding your way by reading topographic maps and using a compass or GPS unit. The Robbs Hut Ski Trail map attached has GPS information in either UTM or latitude and longitude in degrees, minutes and seconds. Confirm that your GPS unit is using WGS 1984 datum.



Things to Take With You

- ✓ Food
- ✓ Sleeping bag/bedding/towels
- ✓ Garbage bags
- ✓ Water
- ✓ Water Purification Device
- ✓ Cooking utensils
- ✓ Toilet paper and paper towels
- ✓ Map, compass, or GPS unit
- ✓ Sunscreen/sunglasses/hat
- ✓ Matches
- ✓ Flashlight
- ✓ First-aid supplies
- ✓ Climbing Skins (Winter)
- ✓ Tire chains and snow shovel for vehicle (winter)

Make Your Reservation Today

RECREATION.gov

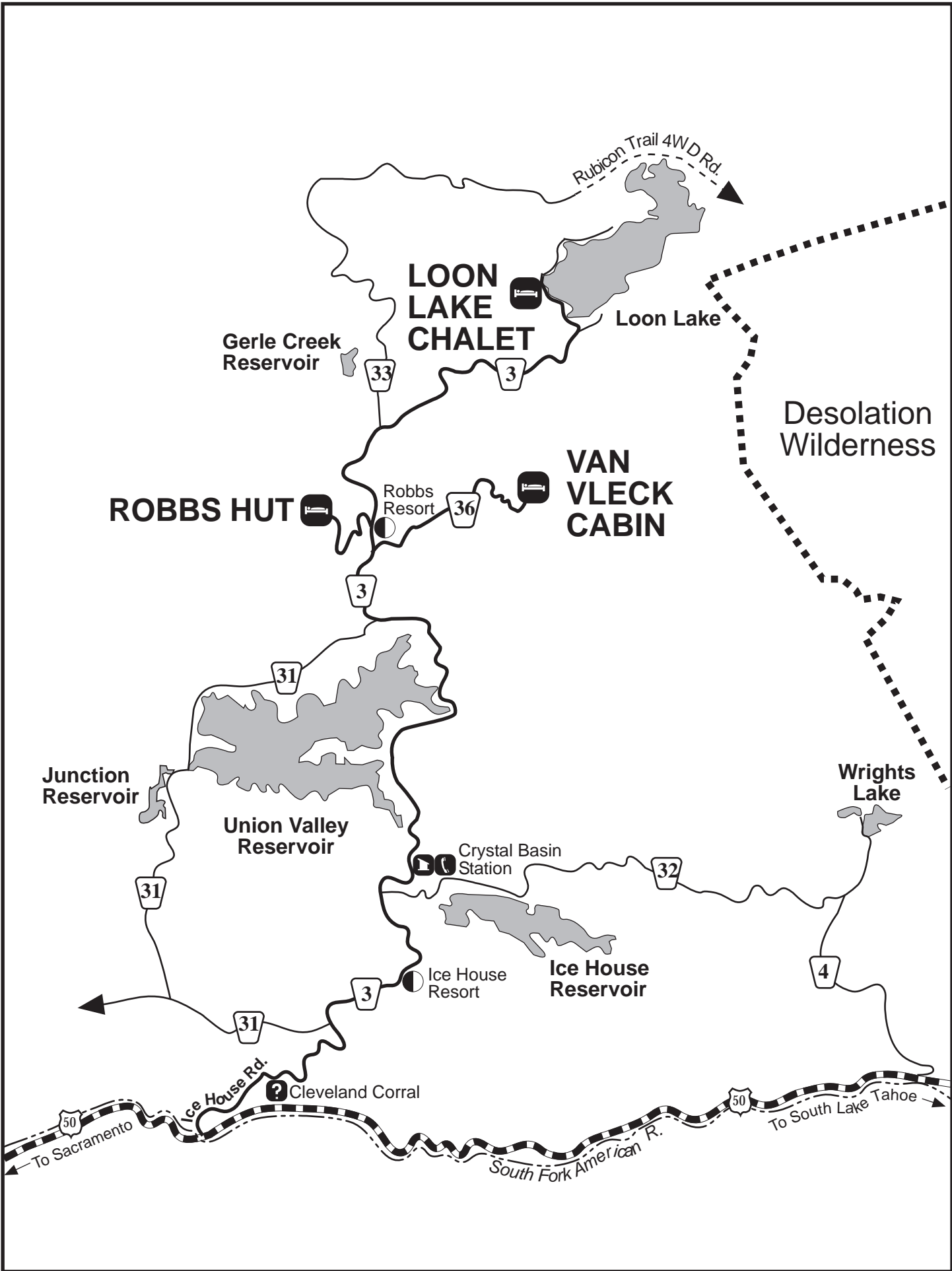
Toll Free: (877) 444-6777

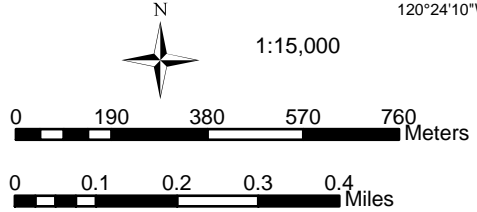
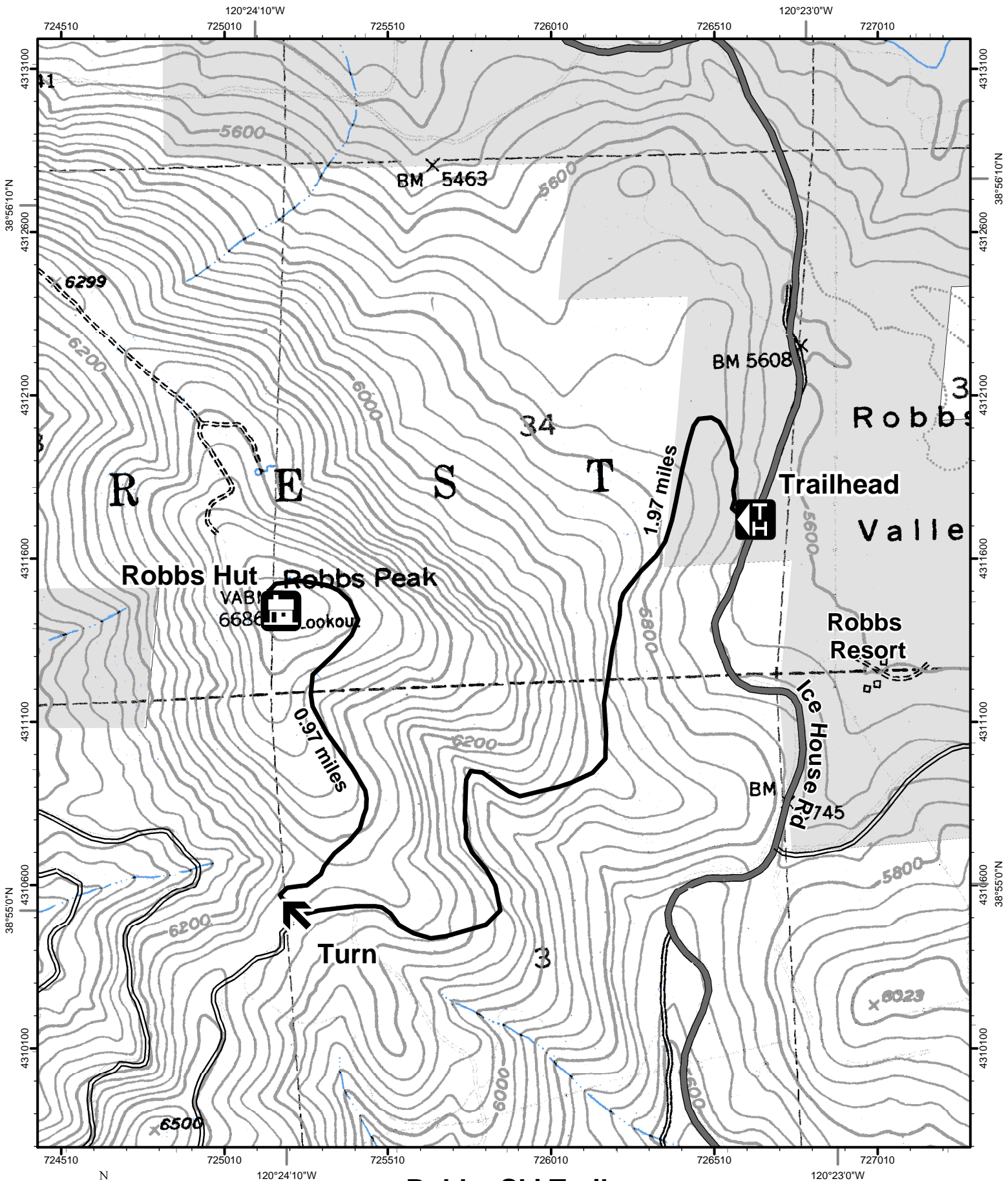
- ◆ Reservations can be made from 4 days to 6 months in advance of your first night's stay by anyone 18 years or older.
- ◆ Fee: \$65.00 per night for up to 6 people. Fees may change at any time. Available year-round.
- ◆ Expect to pay a reservation and cancellation fee when appropriate.
- ◆ No pets or smoking is allowed in the building.
- ◆ Check-out time is 1:00 pm, and check-in time is 2:00 pm.
- ◆ No refunds for bad weather unless Ice House Road is not passable.

Be Prepared For All Winter Emergencies

Notify a responsible person of your planned stay and your time of return. Make sure that you check back with this person. **If you are overdue**, this person should notify the El Dorado County Sheriff's Department at (530) 626-4911 or call 911.

In the event that a storm could snow you in, **be prepared to stay until the road is plowed.** Carry a snow shovel to dig your vehicle out.





Robbs Ski Trail
 Confirm that your
 GPS is using:
WGS 1984 datum
Universal Transverse Mercator
Degrees/Minutes/Seconds

Trailhead	0726546mE	4311900mN
Turn	0725143mE	4310687mN
Robbs Hut	0725093mE	4311620mN
Trailhead	38°55'36.4"N	120°23'11.9"W
Turn	38°54'58.4"N	120°24'11.5"W
Robbs Hut	38°55'28.7"N	120°24'12.5"W