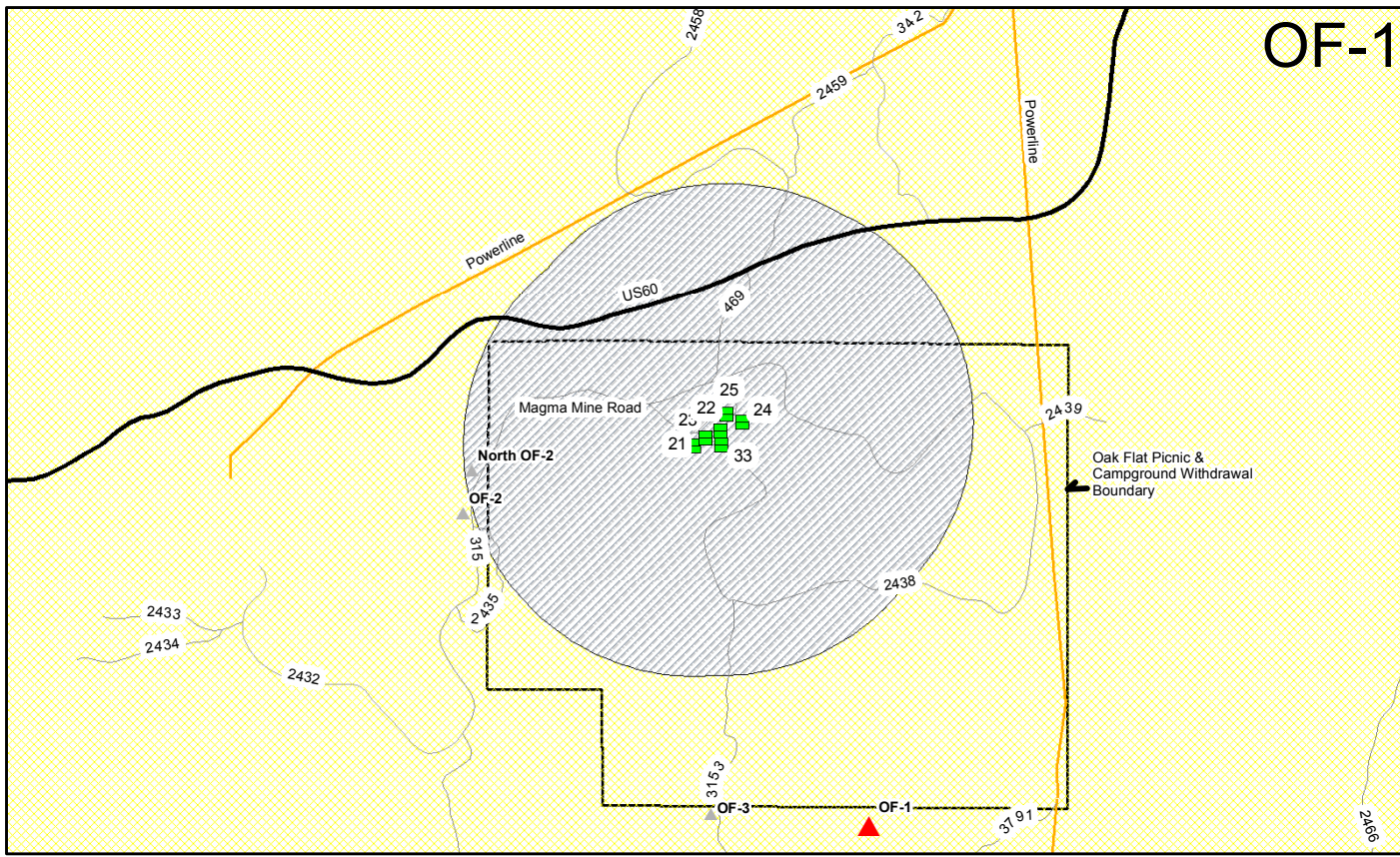
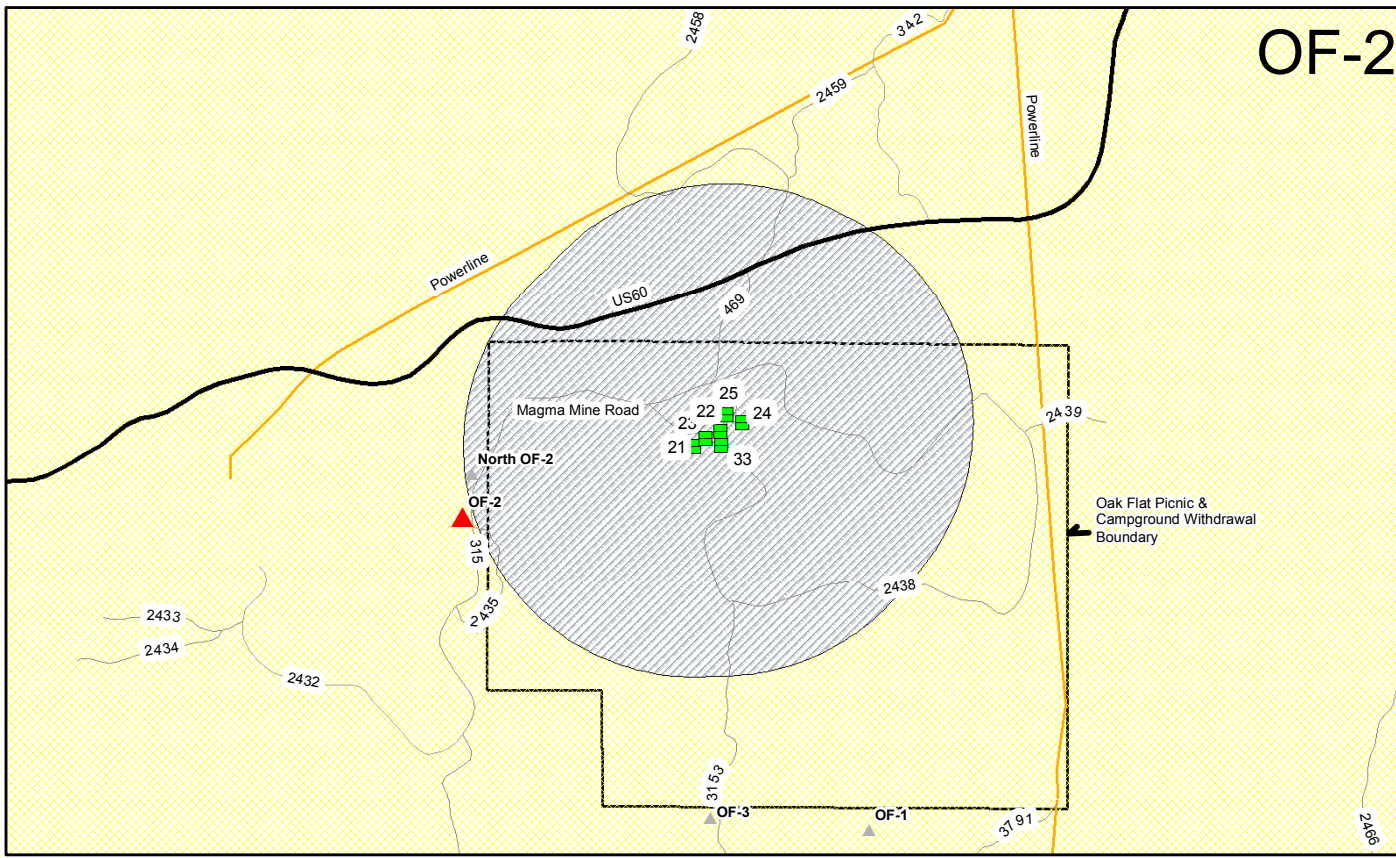


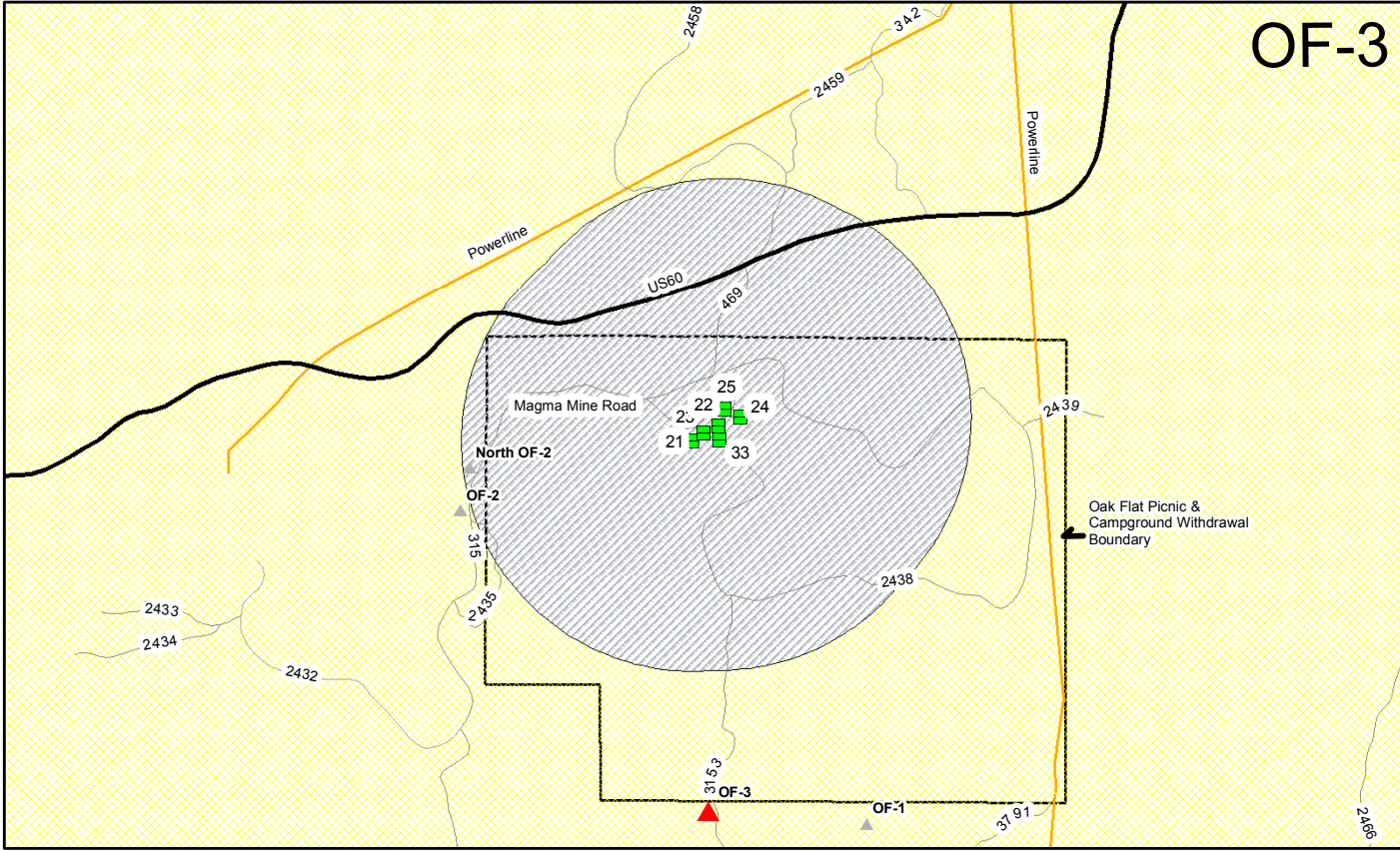
OF-1



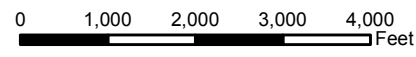
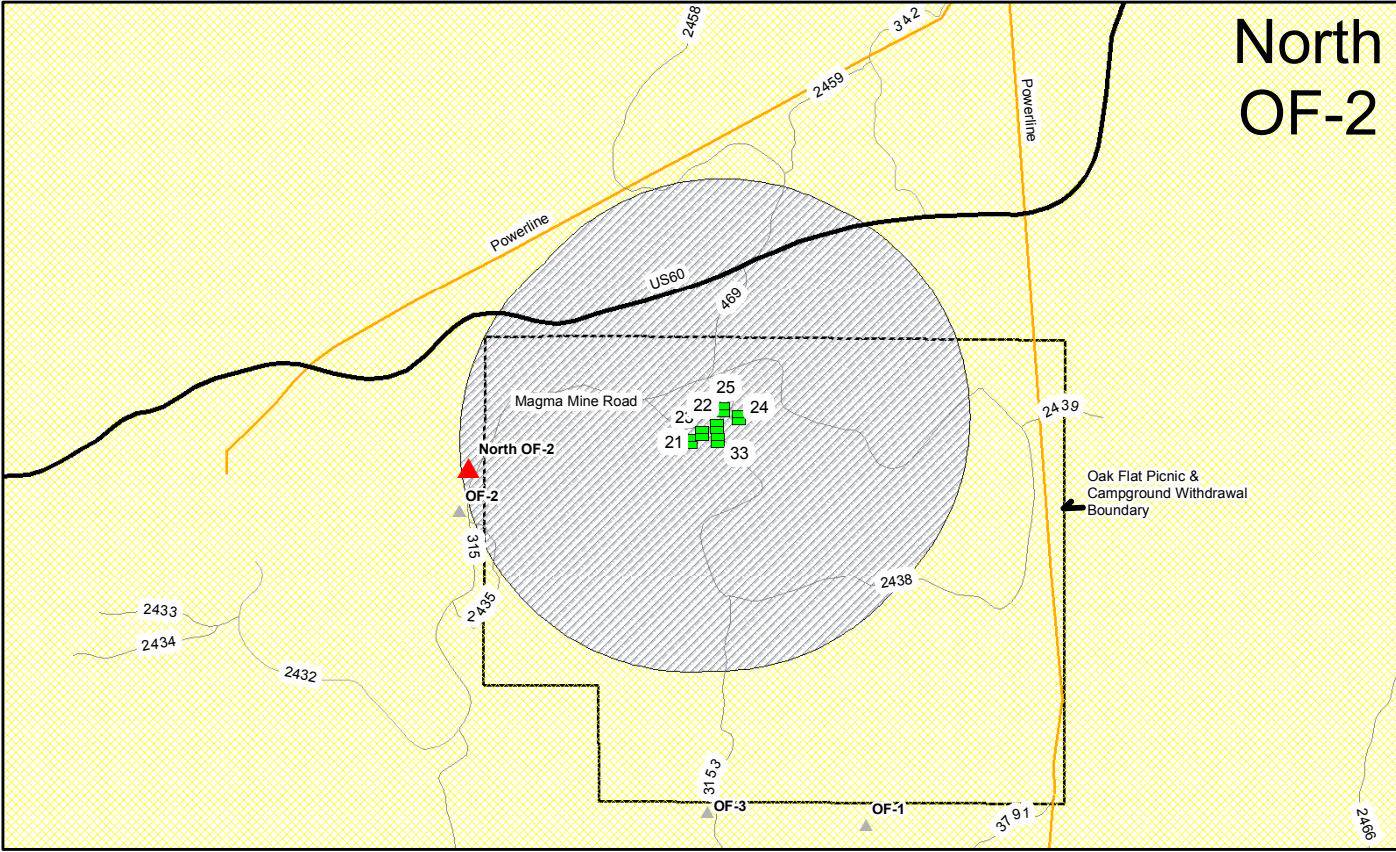
OF-2



OF-3



North OF-2



**Legend**

**Key Observation Points**

- No Balloons Sighted
- 80' Balloon Sighted
- 12' Balloon Sighted
- Both Balloons Sighted



**Foreground = 0 to 0.25 - 0.5 Miles From Observer**



**Middleground = 0.25 - 0.5 Mile to 3-5 Miles From Observer**



**Proposed Drill Site**



**Forest Road**

**RESOLUTION COPPER MINING  
PRE-FEASIBILITY PLAN OF OPERATIONS**  
Tonto National Forest - Globe Ranger District  
Environmental Assessment

Visual Assessment of OF-1, OF-2, OF-3, and North OF-2 from Designated Campsites at the Oak Flat Campground

Figure 3-4