

**Sound Level Contours<sup>1</sup>**  
**A-weighted decibels (dBA)**

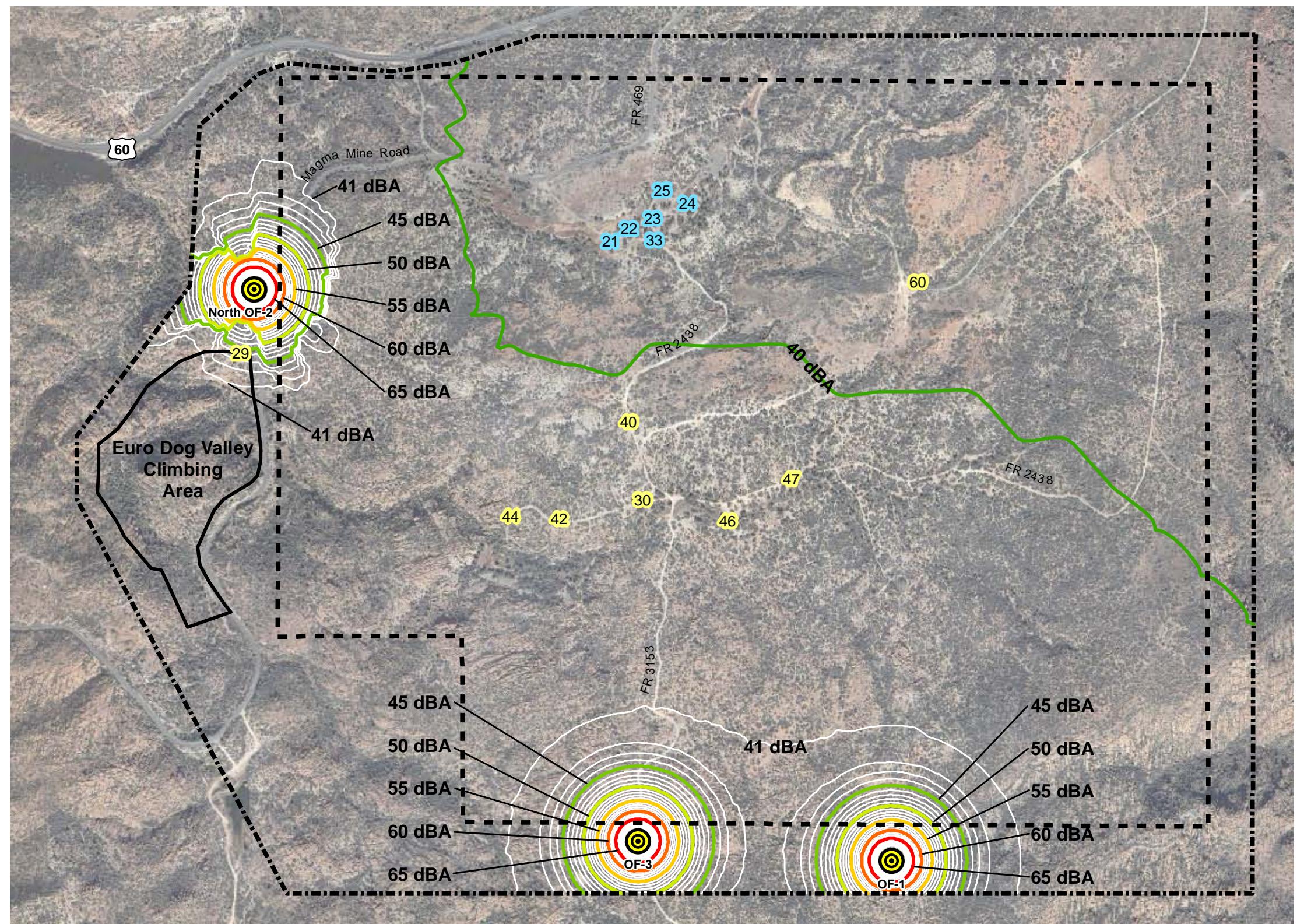
- 40 dBA
- 45 dBA
- 50 dBA
- 55 dBA
- 60 dBA
- 65 dBA

- Oak Flat Picnic and Campground Withdrawal Area Boundary
- - - Study Area Boundary
- ⊙ Proposed Exploration Drill Rigs

**Campgrounds**

- 22 Oak Flat Campground Designated Campsite
- 44 Large Dispersed Campsite As Determined In Field Reconnaissance

Notes:  
 1. Results of computer model of Alternate-3: the simultaneous operation of drill rigs at sites OF-1, North OF-2, and OF-3 plus a background sound level of 40 dBA.



**RESOLUTION COPPER MINING  
 PRE-FEASIBILITY PLAN OF OPERATIONS**  
 Tonto National Forest – Globe Ranger District  
 Environmental Assessment

Sound Level Contours Resulting from  
 Noise Model of Alternate-3, North OF-2

Figure 3-8