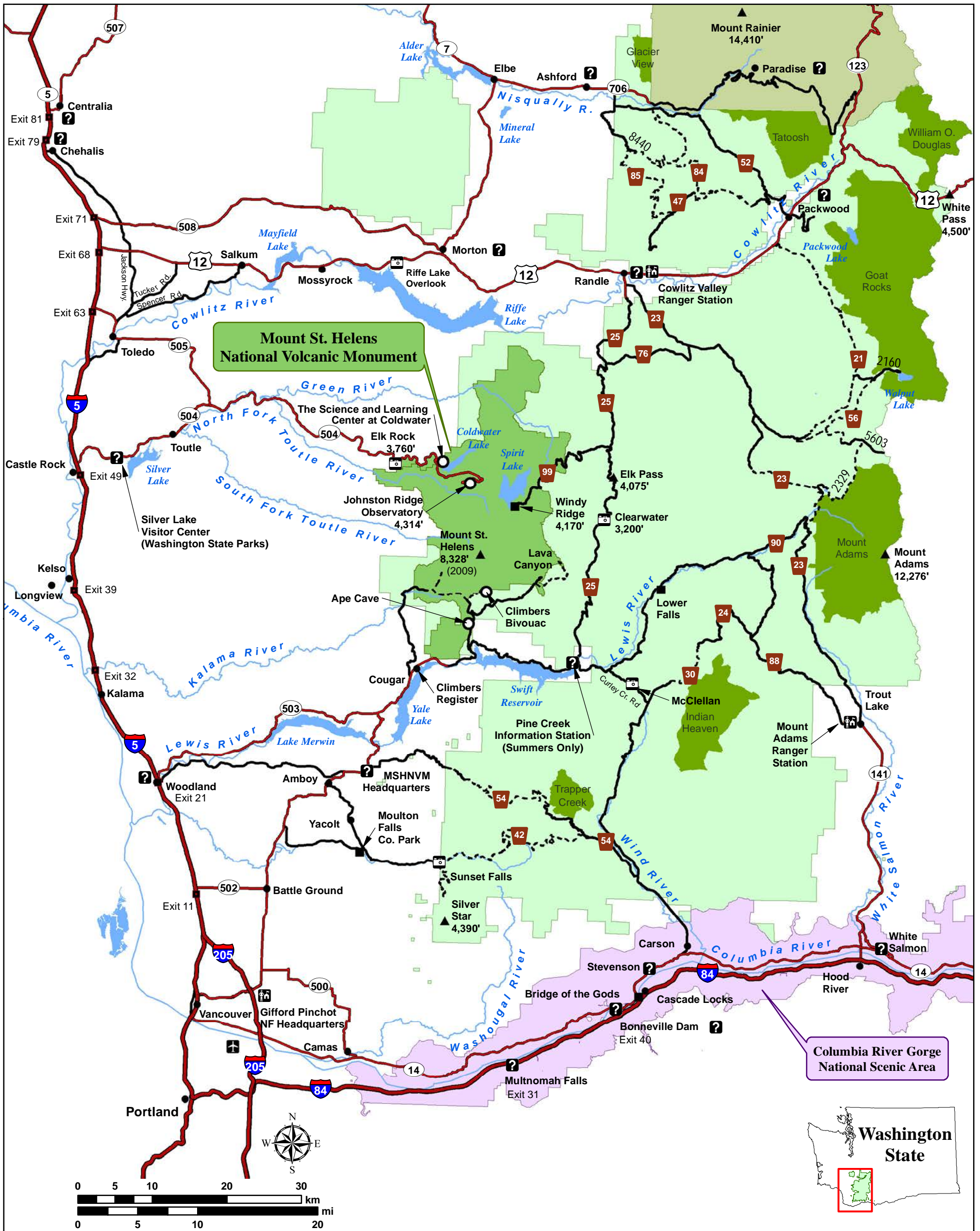




Gifford Pinchot National Forest Vicinity



for the greatest good



For more information, visit our websites at:
<http://www.fs.usda.gov/giffordpinchot>
<http://www.fs.usda.gov/mountsthelens>

or call (360) 891-5000

USDA Forest Service is an equal opportunity provider and employer.

Gifford Pinchot NF

- Admin. Boundary
- Mount St. Helens NVM
- Wilderness Area
- Columbia River Gorge NSA
- Paved Road
- Gravel Road
- Recreation Site

Landmarks

- Locale
- Summit
- City, Town, Community
- Airport
- Information

Transportation

- Interstate Hwy.
- US, State or County Hwy.
- Other Paved Road
- Milepost Marker

Hydrography

- Lakes and River Areas
- Rivers

This map is intended for general reference and is approximate in general proportions.

Elevations are in Feet

For Road and Recreation Conditions Report, go to this link:
<http://www.fs.usda.gov/recremain/giffordpinchot/recreation#cond>

Printed June, 2012